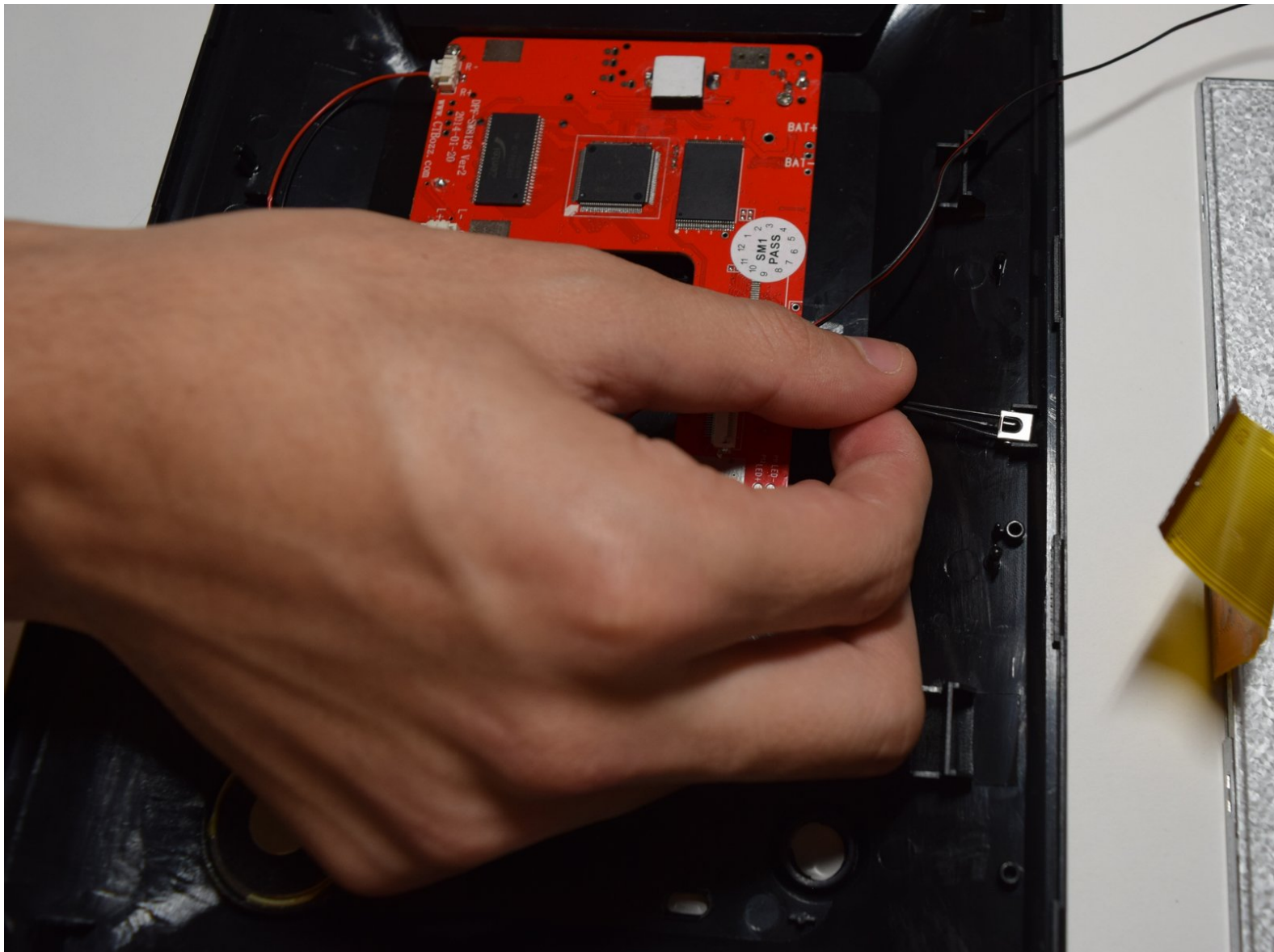




# Aluratek ADMPF310F Remote Sensor Replacement

By replacing the remotes sensor you will be able to use the remote with the device again.

Written By: Pascal Alexis



---

## INTRODUCTION

In this guide you will learn how to remove and replace the remote sensor in your digital frame. Replacing the remote sensor fixes many common issues if your remote isn't working with your device. This guide also requires soldering for more on how to solder check the link [here](#).



### TOOLS:

- [Spudger](#) (1)
  - [iFixit Opening Tools](#) (1)
  - [Soldering Iron](#) (1)
-

## Step 1 — Screen



- Using the plastic opening tool, pry off the clips all around the frame. You will hear a popping sound for every clip

⚠ Be sure not to pry too hard because you could crack or break the plastic facing of the device.

## Step 2

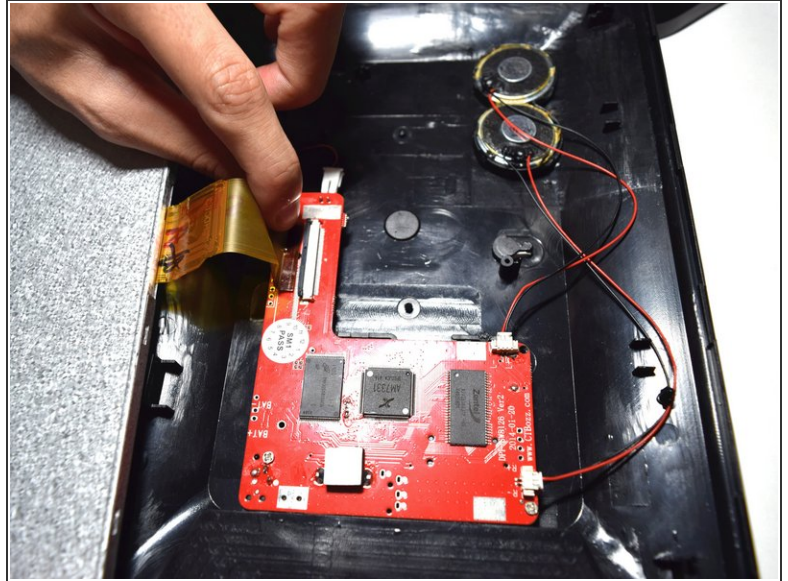
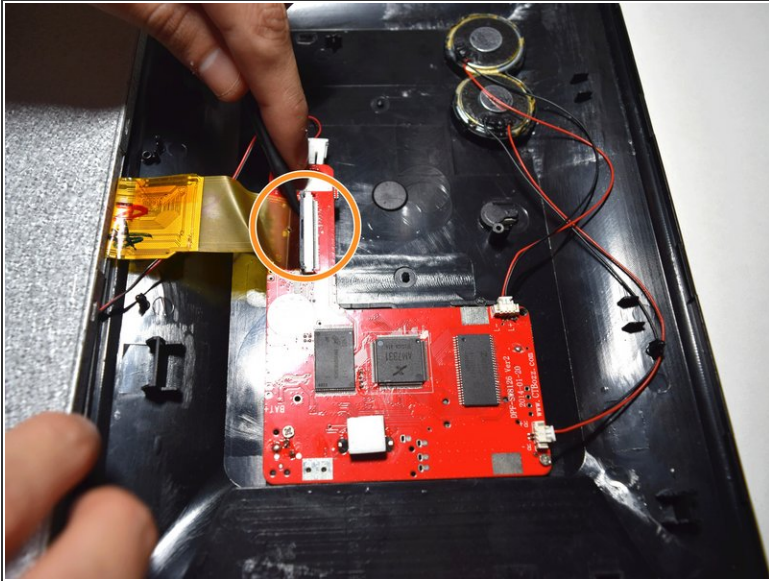


- Lift screen out of place so you can access the plugs that connect it.

⚠ Be careful not to pull the screen too far away when placing to the side, many fragile wires are connected.



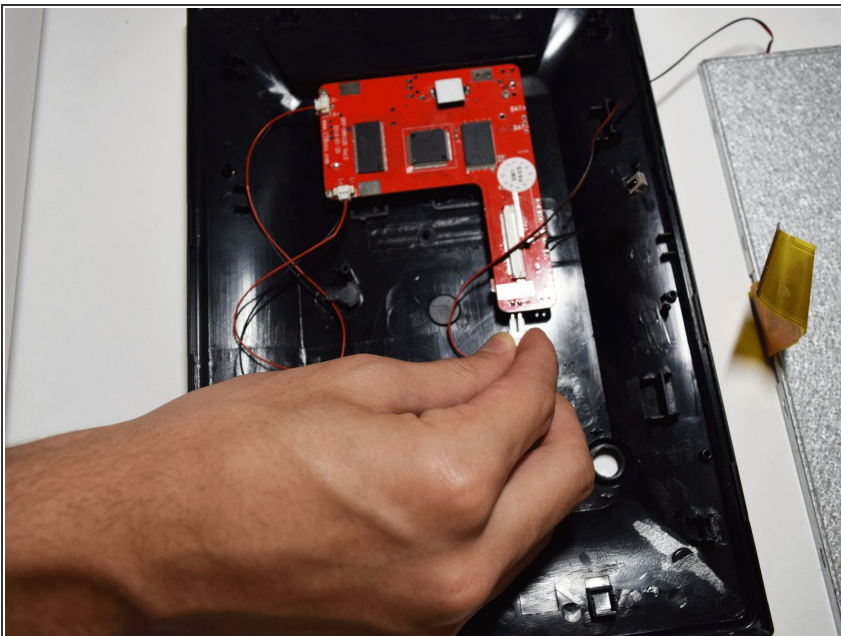
## Step 3



- Using the plastic spudger tool lift the plastic zif(zero instertion force) connector clip up.
- Pull the ribbon cable away from the motherboard.

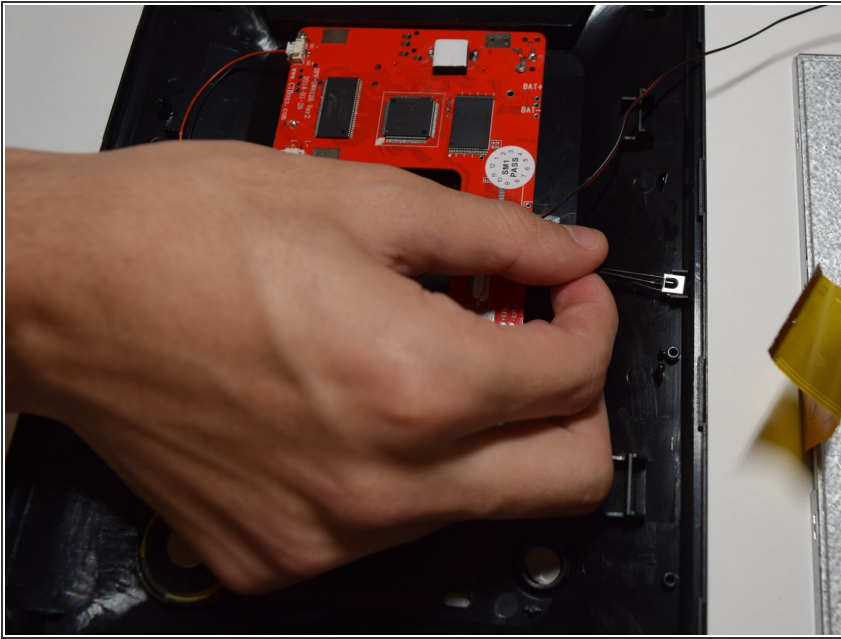
⚠ Be careful as this clip is very frail.

## Step 4



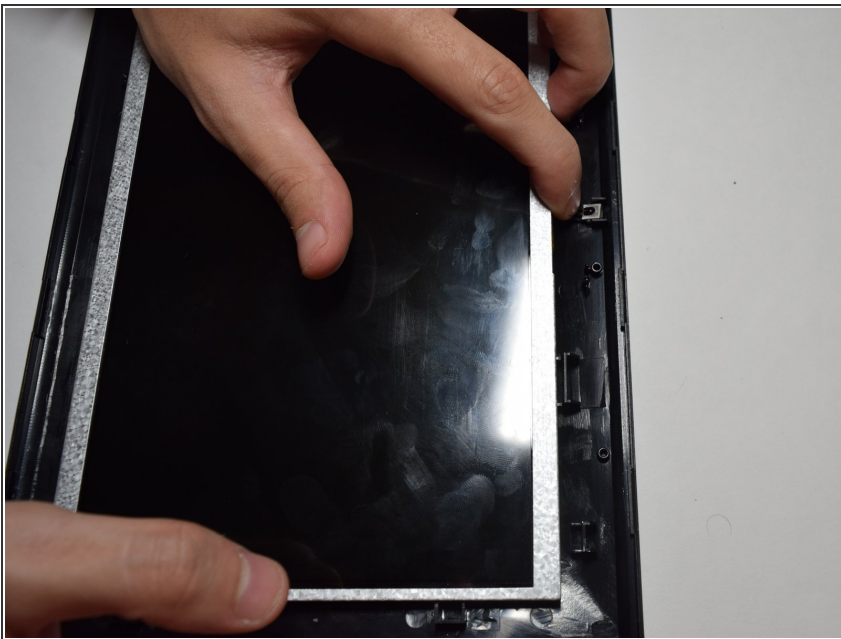
- Disconnect the red and black cable connecting the screen to the motherboard by just pulling it out.

## Step 5 — Remote Sensor



- Pull out the remote sensor from its holder with your hands.
- Unsolder the remote sensor from the motherboard.

## Step 6



- Resolder the the remote sensor back to the motherboard.
- ① For more on how to solder check the link [here](#).

To reassemble your device, follow these instructions in reverse order.