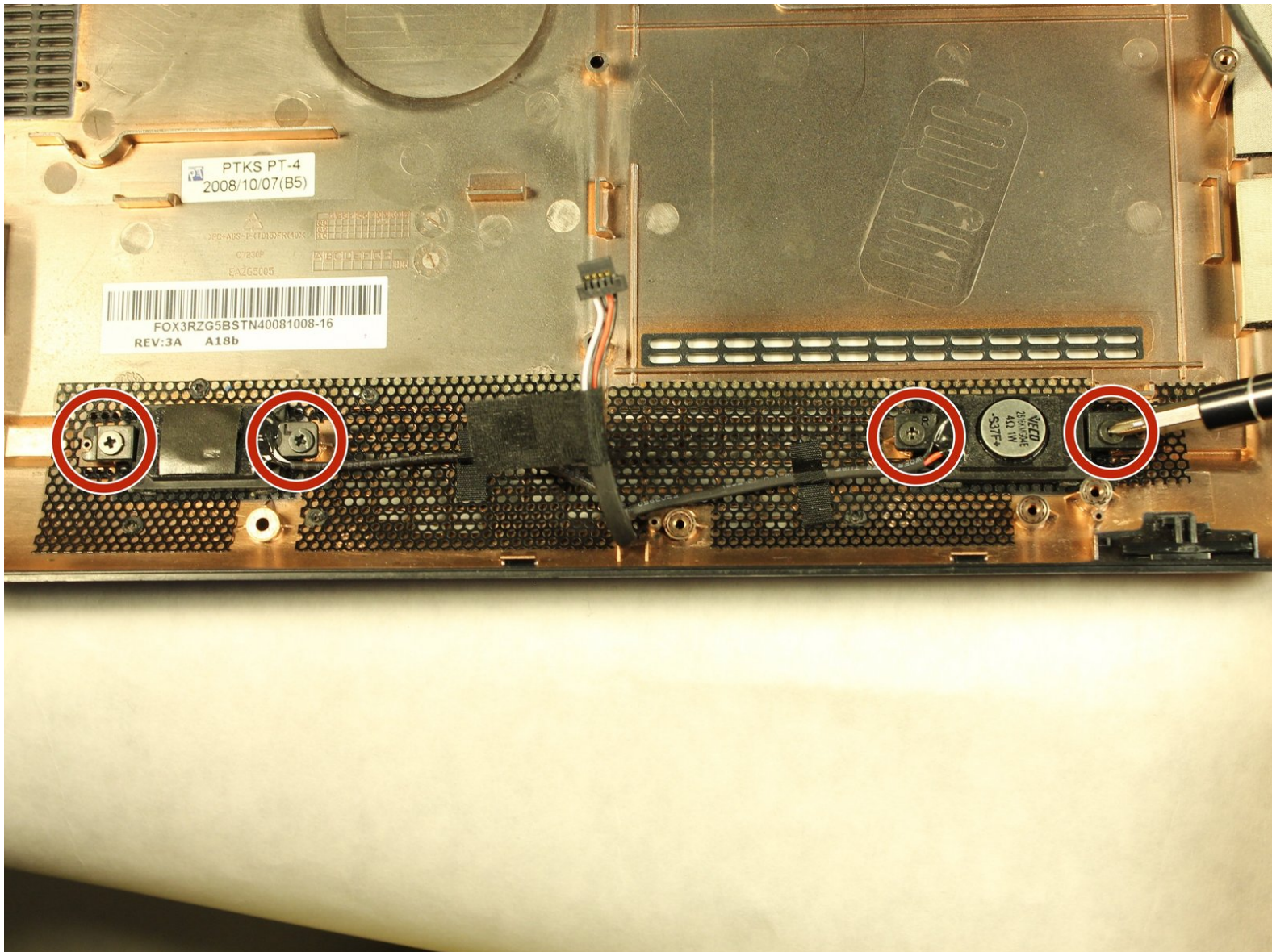




# Acer Aspire One A150-1570 Speaker Replacement

This guide will explain and demonstrate how to replace the Speakers safely for you and your device.

Written By: Briana Naranjo



---

## INTRODUCTION

This guide is simple to follow. The Speaker can easily be removed and installed within minutes.

---



### TOOLS:

- [Heavy-Duty Spudger](#) (1)
  - [Phillips #0 Screwdriver](#) (1)
-

## Step 1 — Keyboard



- Flip device over so that the battery is farthest from you.
- Identify the switch on the upper left corner and push it left to be in "unlocked" position.

## Step 2



- Identify the latch on the upper right hand corner. Drag and hold the latch to the right.
- Pull the battery out.

## Step 3



- Now flip device back over to show the keyboard.
- Locate the three tabs at the top of the keyboard.

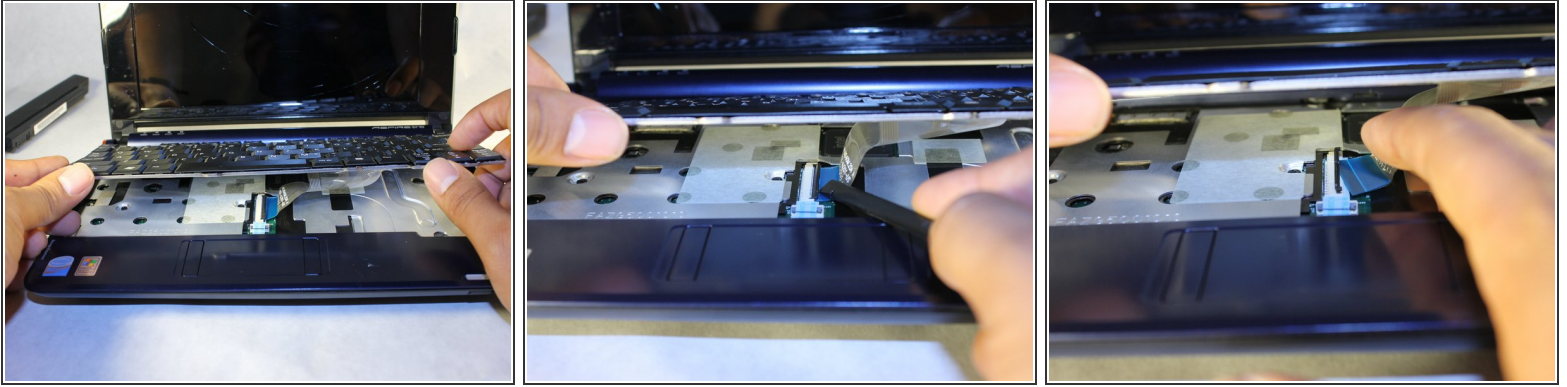
## Step 4



- Start on the top-right and use the spudger to push off the tab from the keyboard.
- Move to the middle tab while still holding the right side up so the tab doesn't fall back into place.
- Continue to hold up keyboard while disconnecting the last tab.

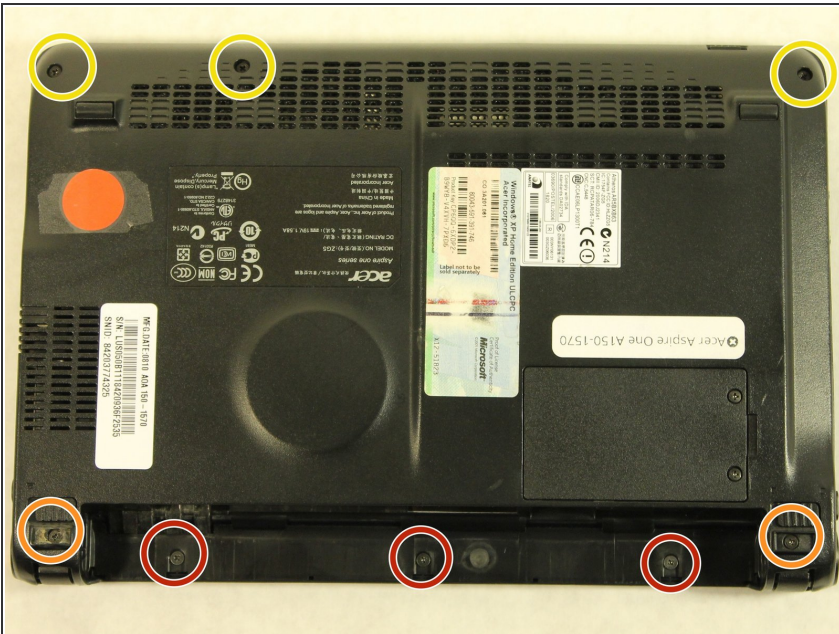
⚠ DO NOT lift keyboard yet. This will be addressed in the next step.

## Step 5



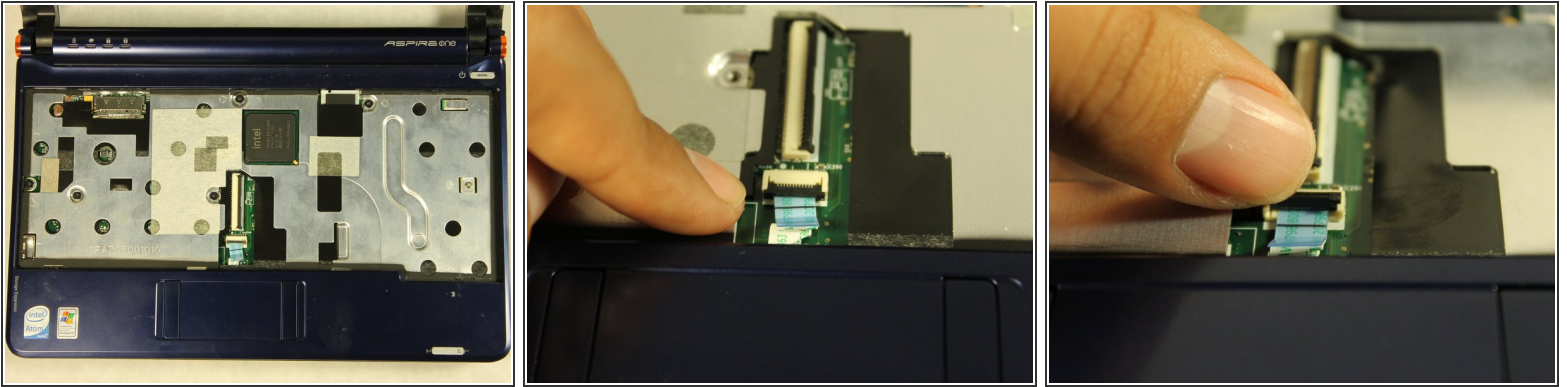
- Here you can see that the keyboard is still attached to the device.
- Use the Spudger to lift the ZIF (Zero Insertion Force) to release the keyboard ribbon.
- Once tab is lifted, the keyboard ribbon should come right out.

## Step 6 — Internal Wireless Card



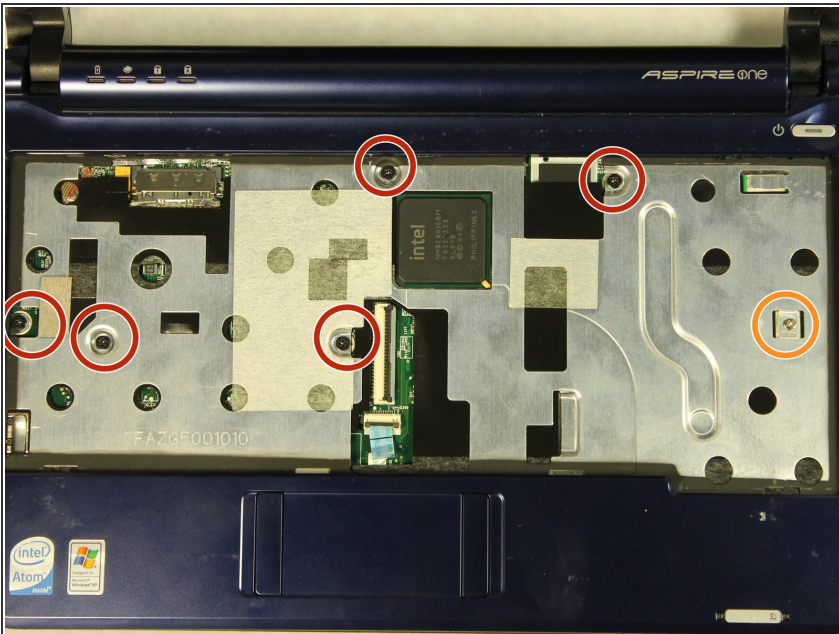
- Close and flip the device over so you can have a good view of all the screws.
- Locate and remove the three 3.9mm screws where the battery was removed from.
- Locate and remove the two 5.8mm screws located underneath the bumpers.
- Locate and remove the three 5.8mm remaining screws at the top of the device.

## Step 7



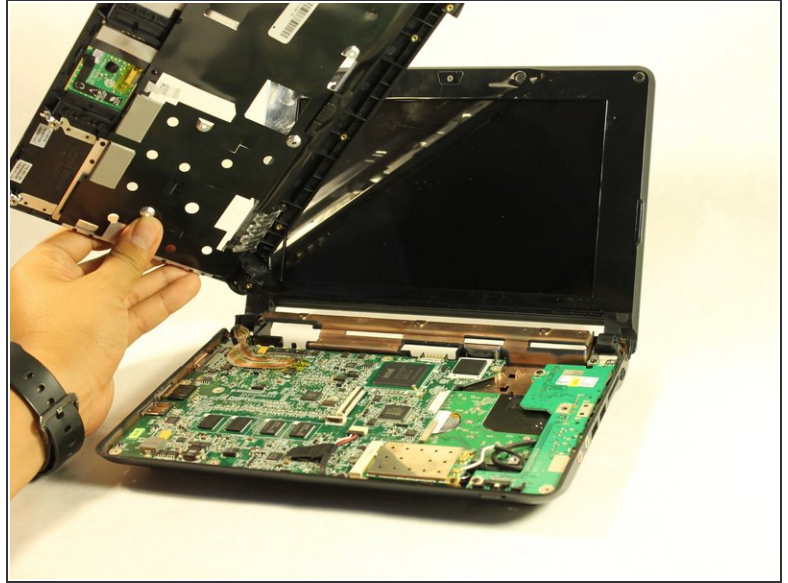
- Flip and reopen device to where you can view the internal panel.
- Locate the ZIF connecting the mouse panel to the motherboard.
- Flip up the black plastic hinge and carefully pull out the ZIF connector.

## Step 8



- Locate and remove all five 4.7mm black screws.
- Locate and remove the one 4.3mm silver screw.

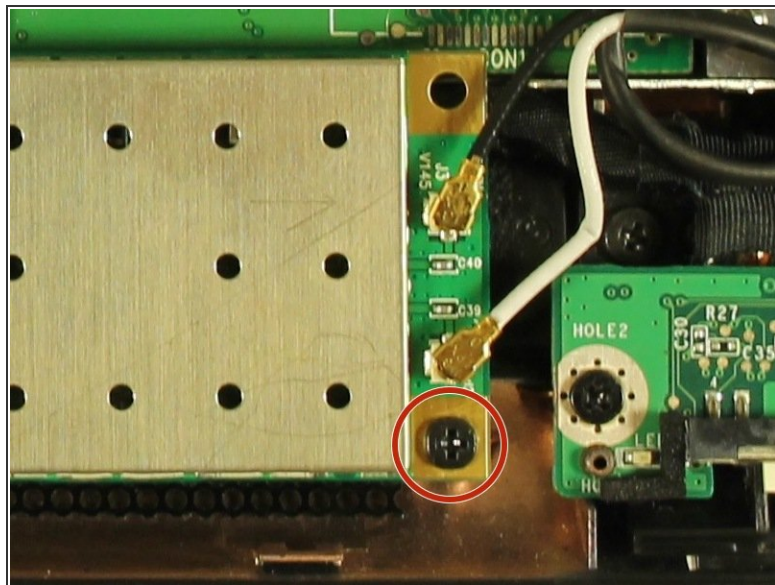
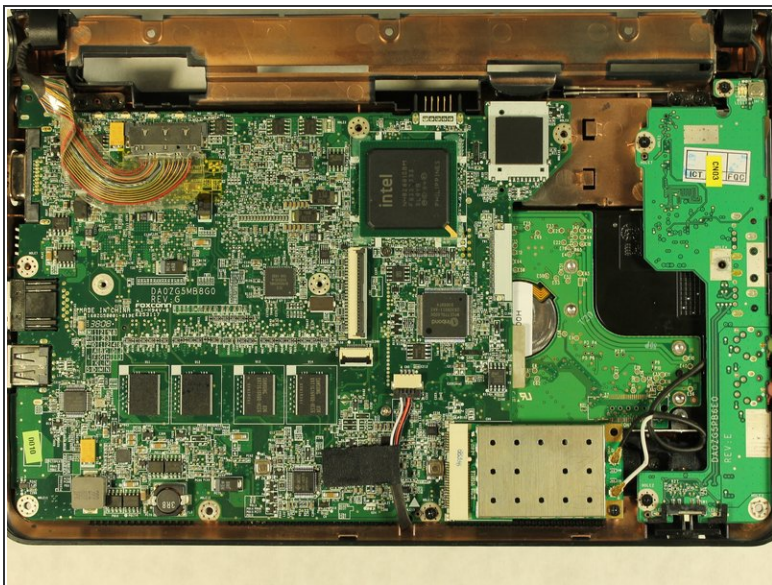
## Step 9



- Pick a corner and slowly lift up the panel while running your finger underneath to pop off the seals.

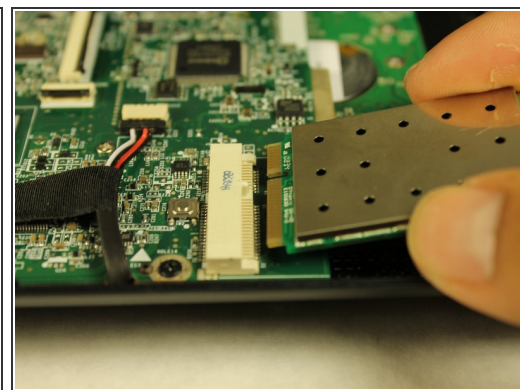
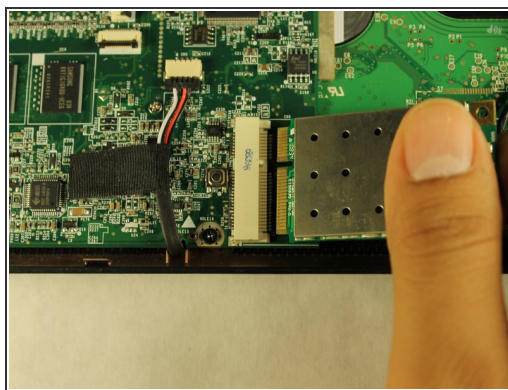
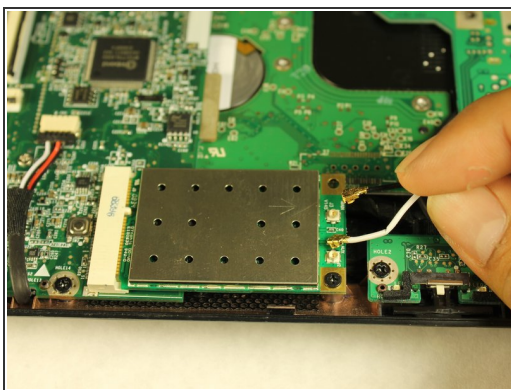
⚠ Make sure to move slowly. You do not want to crack the plastic from being too rough or moving too fast.

## Step 10



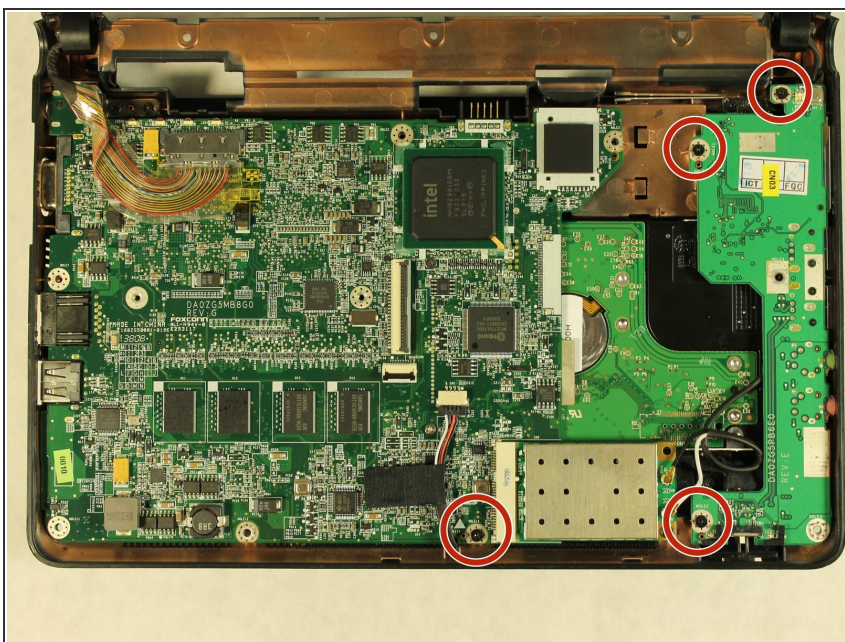
- Locate the internal wireless card.
- Remove the one 3.9mm screw holding it down.

## Step 11



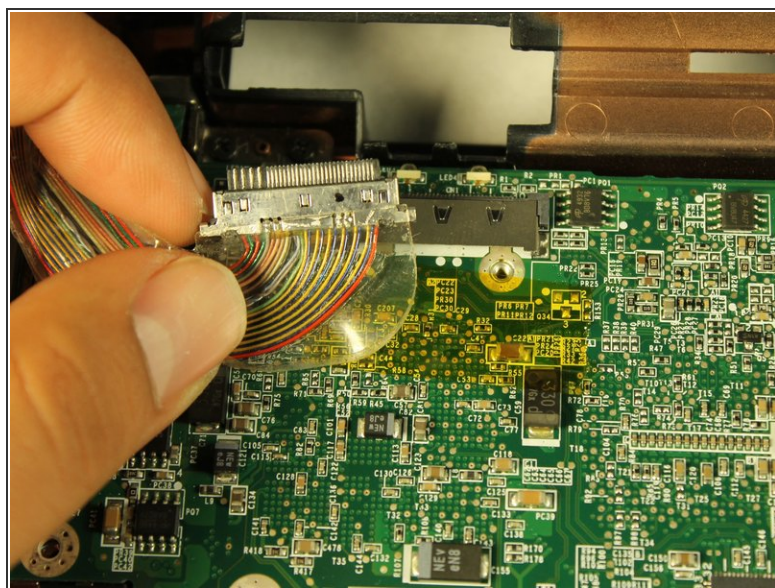
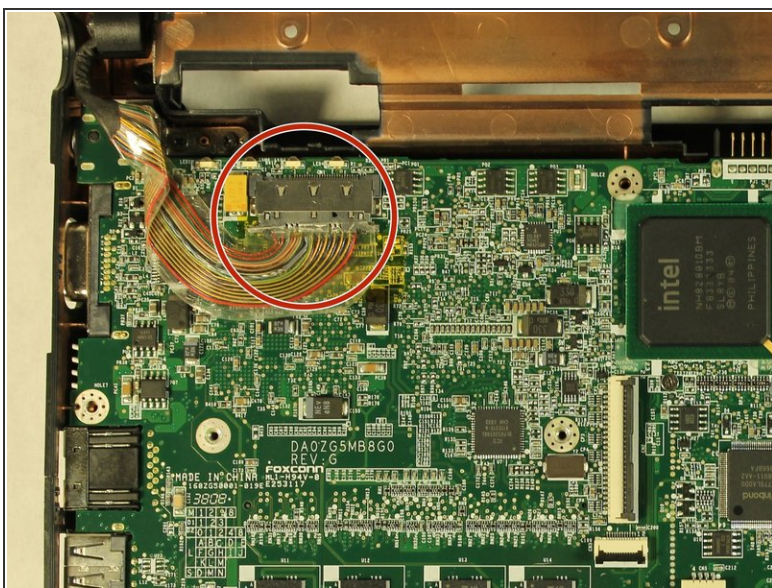
- Carefully disconnect the black and white cable from the internal wireless card.
- Pull the internal wireless card straight out.

## Step 12 — Motherboard



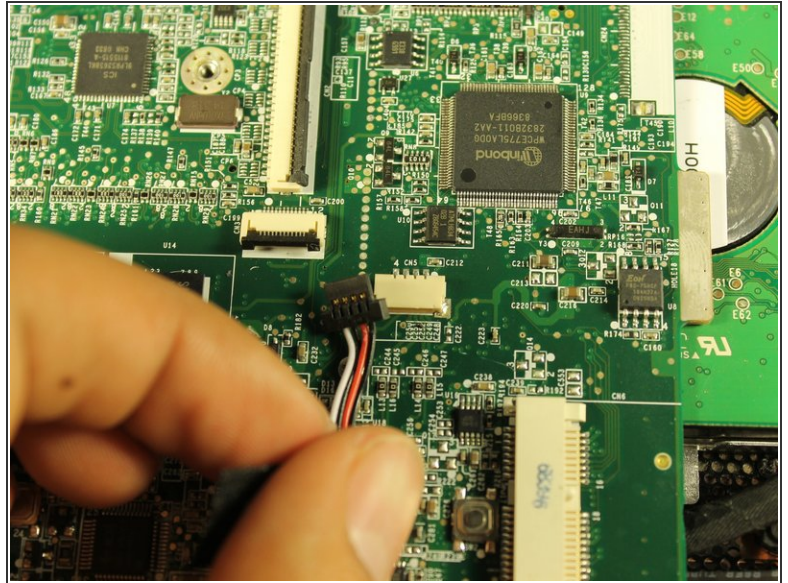
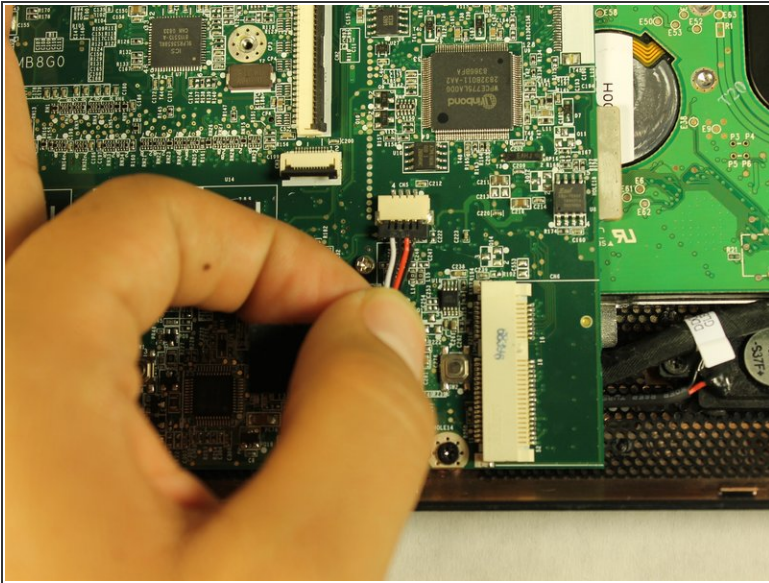
- Locate and remove the four 3.9mm screws on the right side of your device.

## Step 13



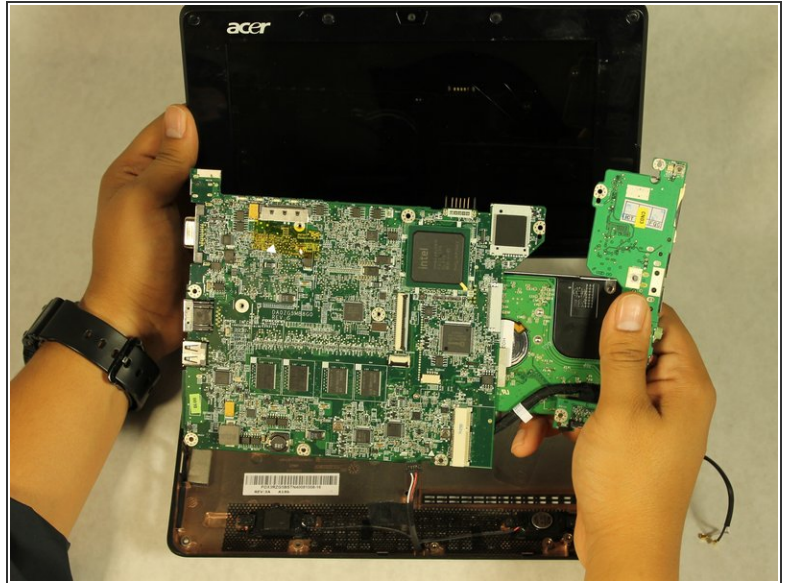
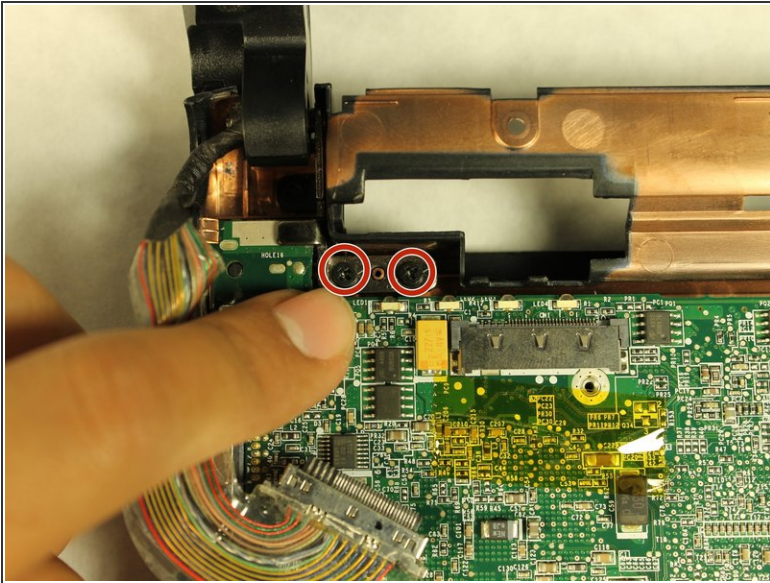
- Locate the display cable in the upper left corner of your device.
- Carefully disconnect the display cable.

## Step 14



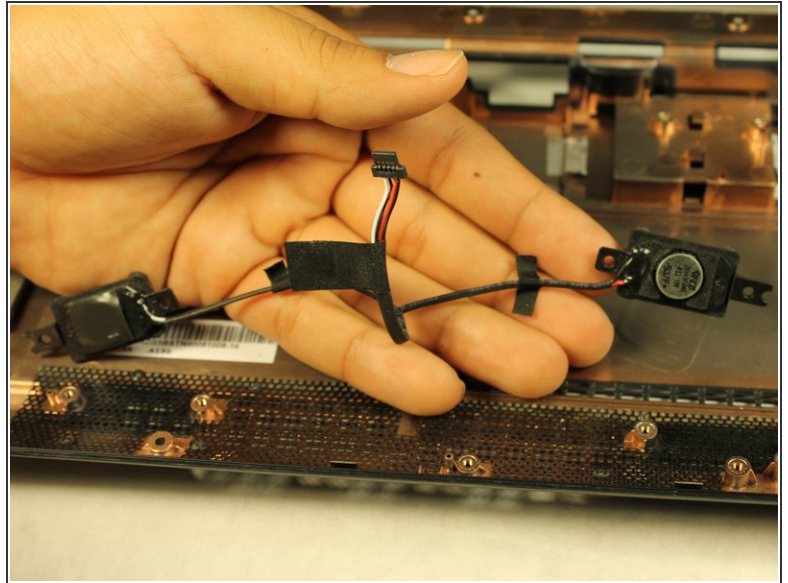
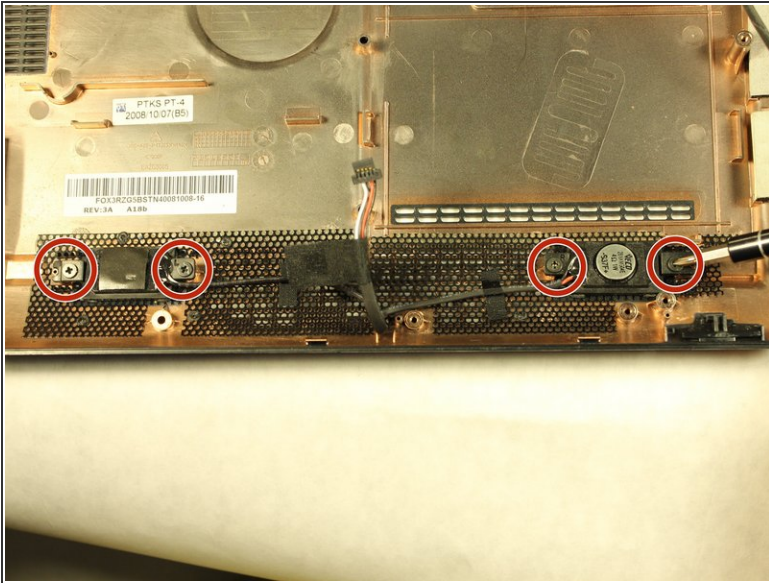
- Locate the speaker cable at the bottom of the mother board.
- Carefully pull the cable to disconnect the speaker from the mother board.

## Step 15



- Locate and remove the last two remaining 4.7mm screws in the upper left corner of the motherboard.
- Gently lift the motherboard off the device frame.

## Step 16 — Speaker



- Locate and remove the 3.9mm screws holding the speakers in place.
- Gently lift up the speakers from the frame.

To reassemble your device, follow these instructions in reverse order.