



# Toshiba Satellite C55-C5268 Hard Drive Replacement

This guide will show you how to remove and replace the hard drive of your Toshiba Satellite laptop.

Written By: Greg Smith



## INTRODUCTION

The hard drive of a laptop is where all the data is stored. From your operating system to those pictures of your dogs, it's all located within this unassuming gizmo. If a hard drive fails, it can be catastrophic. Be sure to back up important data regularly!



### TOOLS:

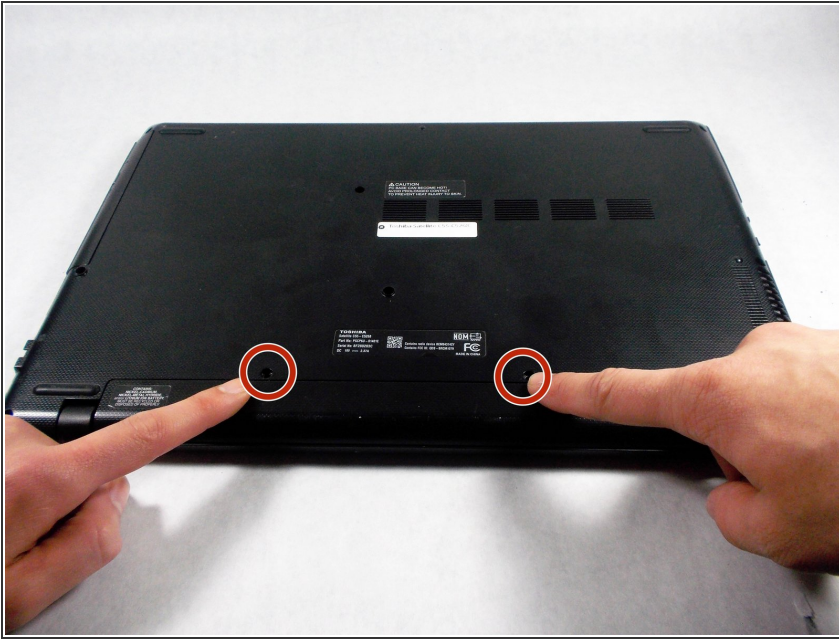
- [Spudger](#) (1)
- [Phillips #1 Screwdriver](#) (1)



### PARTS:

- [1 TB SSD / Upgrade Bundle](#) (1)
- [250 GB SSD / Upgrade Bundle](#) (1)
- [500 GB SSD / Upgrade Bundle](#) (1)
- [2 TB SSD](#) (1)

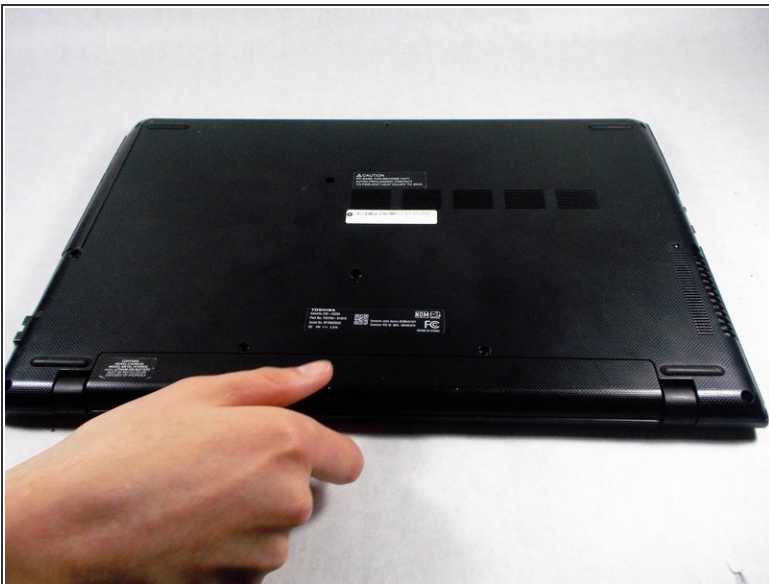
## Step 1 — Battery



**i** Unplug and power off the laptop.

- Unscrew the two 9 mm Phillips #1 screws holding the battery in place.

## Step 2

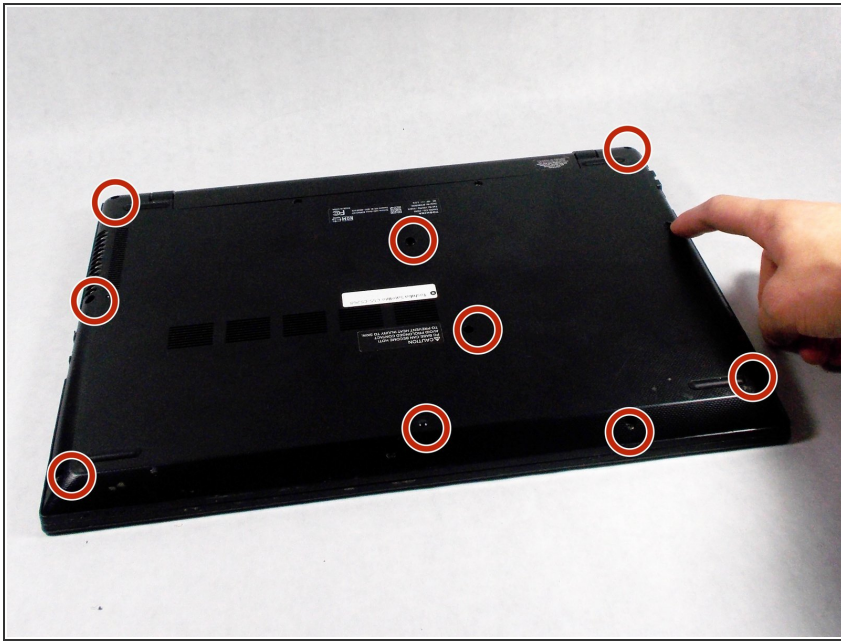


- Grab the battery and pull it away from the laptop to remove it.

**i** This doesn't require a lot of effort, so you don't have to pull too hard.




### Step 3 — Back Panel



- Unscrew the 10 9.0 mm screws holding the back panel on using a Phillips head #1 screwdriver.

### Step 4



 Using a metal spudger can damage sensitive components.

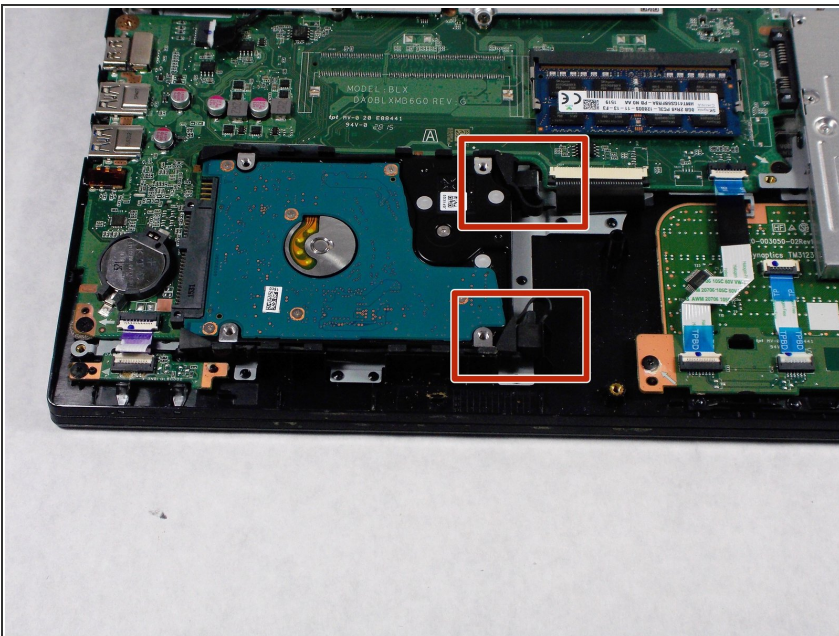
- Insert a metal spudger tool in the seam between the back cover and the laptop itself. Gently run the spudger around the edge to pop the cover off.

## Step 5



- Pry up the back panel from the rest of the laptop using a spudger.
- ⓘ It is best to start around the USB port and work your way around the edge until the panel completely snaps off.

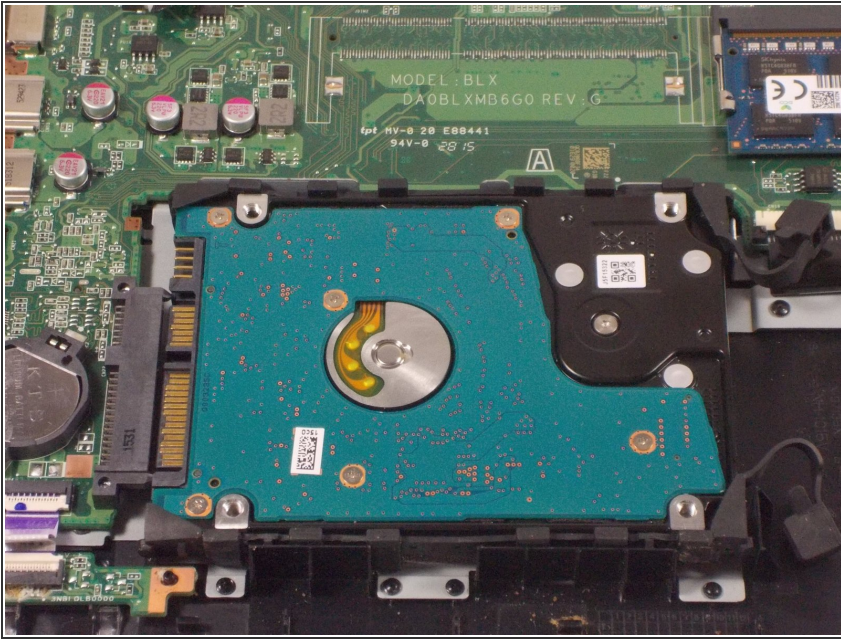
## Step 6 — Hard Drive



- Pull the two rubber stops upward to move them out of the way and free the hard drive.



## Step 7



- Slide the hard drive to the right towards the stops. This disconnects it from the motherboard.
- ⓘ This will require some force to slide the hard drive.

## Step 8



- The hard drive can be lifted out for replacement.

To reassemble your device, follow these instructions in reverse order.