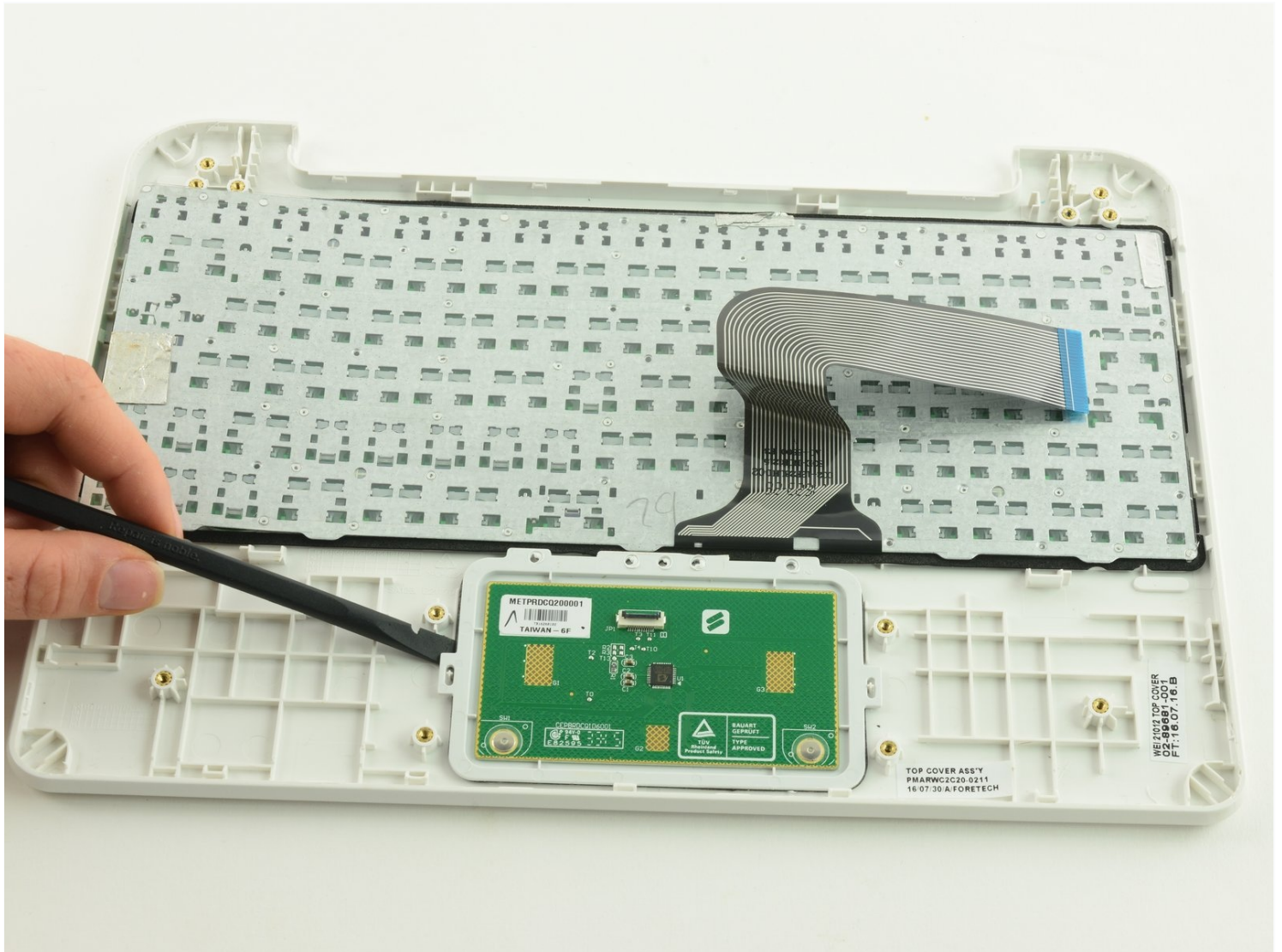




# One Education Infinity One Touchpad Replacement

This guide will detail how to replace the...

Written By: Taylor Bratsch



# INTRODUCTION

This guide will detail how to replace the touchpad in the One Education Infinity:One laptop.

## TOOLS:

Heavy-Duty Spudger (1)

Tweezers (1)

Jimmy (1)

Phillips #00 Screwdriver (1)

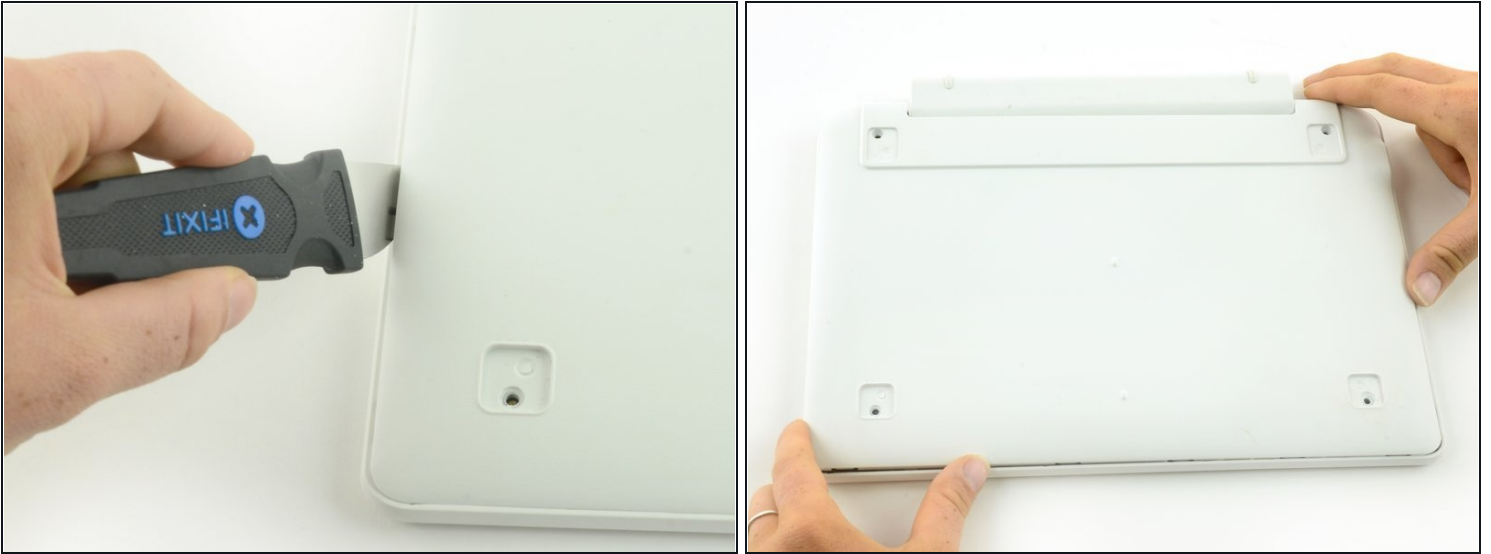
Phillips #000 Screwdriver (1)

## Step 1 — Back Case



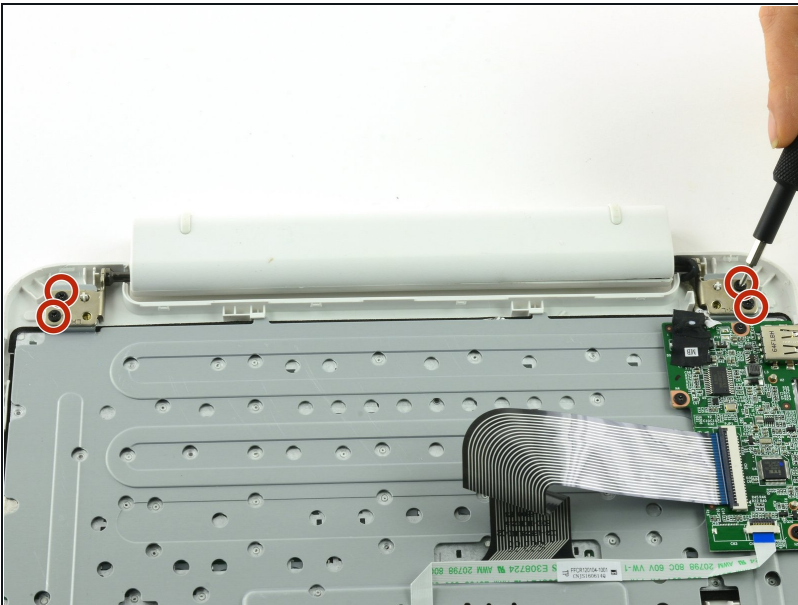
- Use a spudger to pry the four rubber pads away from the bottom of the case.
- Use a Phillips #00 screwdriver to unscrew the four 6.4 mm screws.

## Step 2



- Insert a jimmy or other prying tool into the seam on the edge of the casing.
- Trace along the edges of the device until all clips are released.
- Lift the back case away from the device.

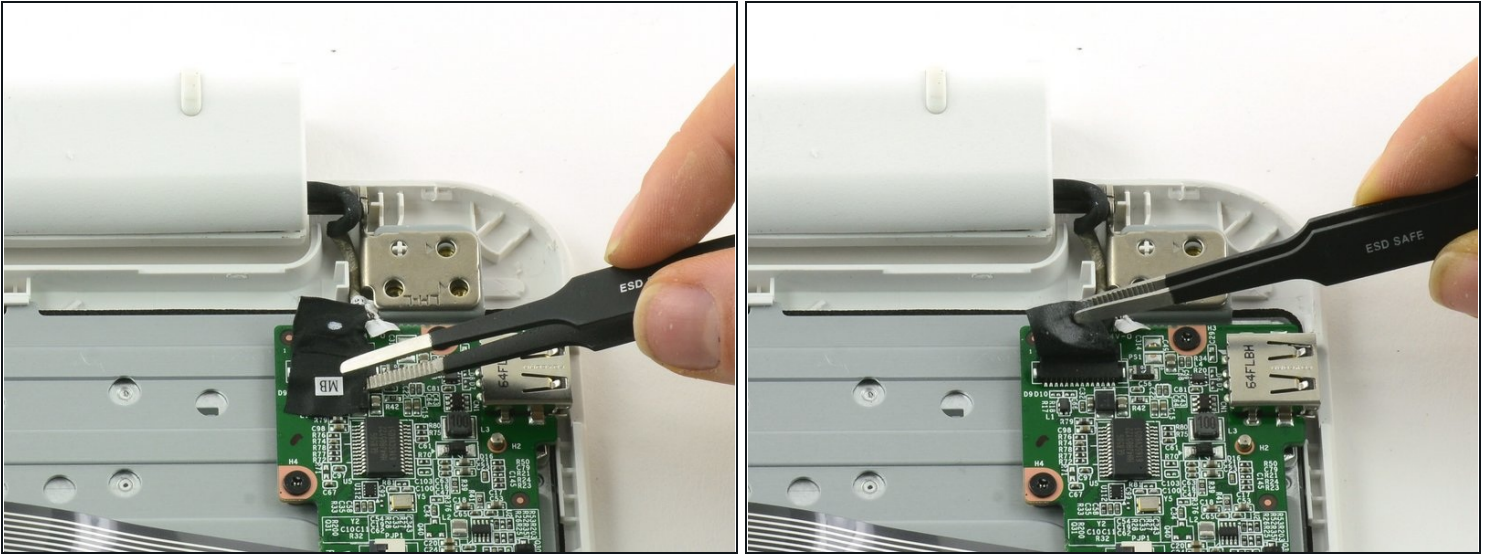
## Step 3



- Use a Phillips #00 screwdriver to unscrew the four 6.4mm screws on the hinge mounts.



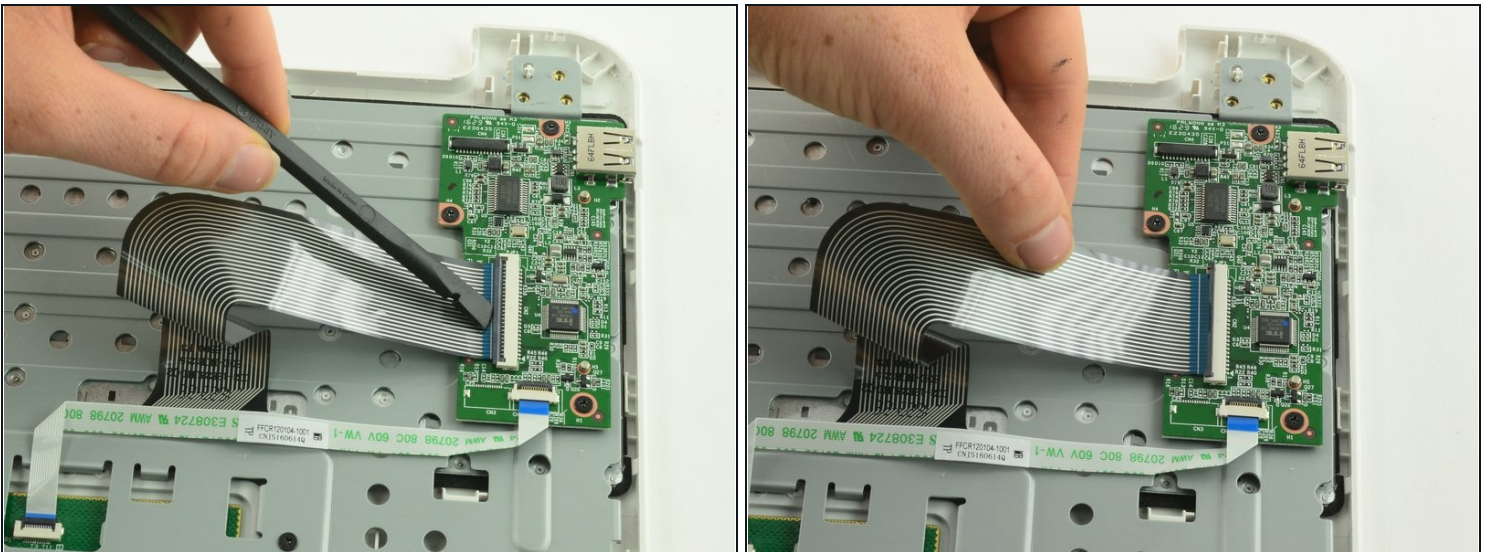
## Step 4



- Use [tweezers](#) to lift the fabric cover and hinge connector away from the daughterboard.

⚠ Always use ESD safe tools when working with delicate electrical components.

## Step 5 — Daughterboard



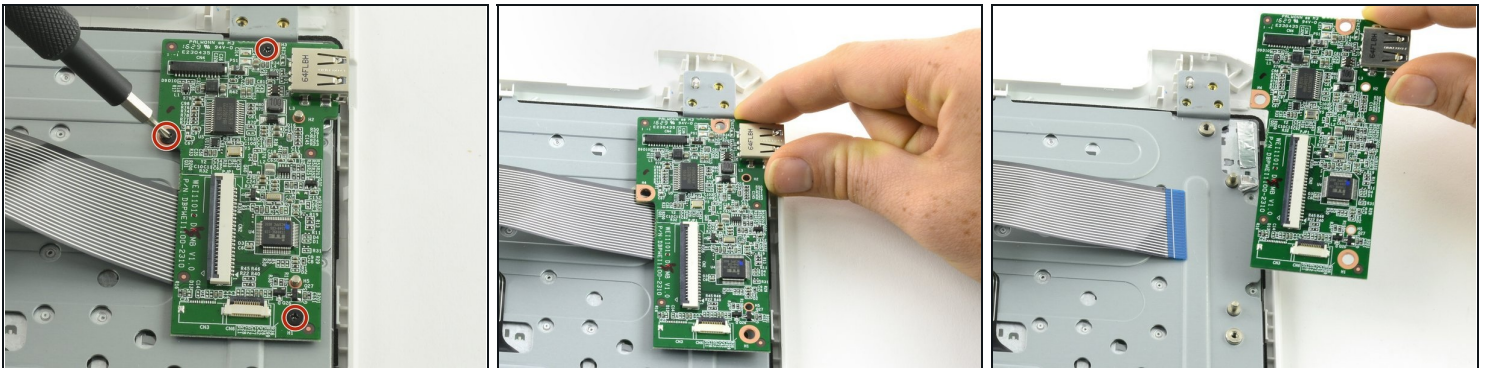
- Flip up the black retaining flap on the ZIF connector holding the large grey ribbon cable in place.
- Pull the ribbon cable straight out of the ZIF connector.

## Step 6



- Use the flat end of a spudger to flip up the black tab on the smaller ZIF connector.
- Use [tweezers](#) to pull the ribbon cable straight out of the connector.

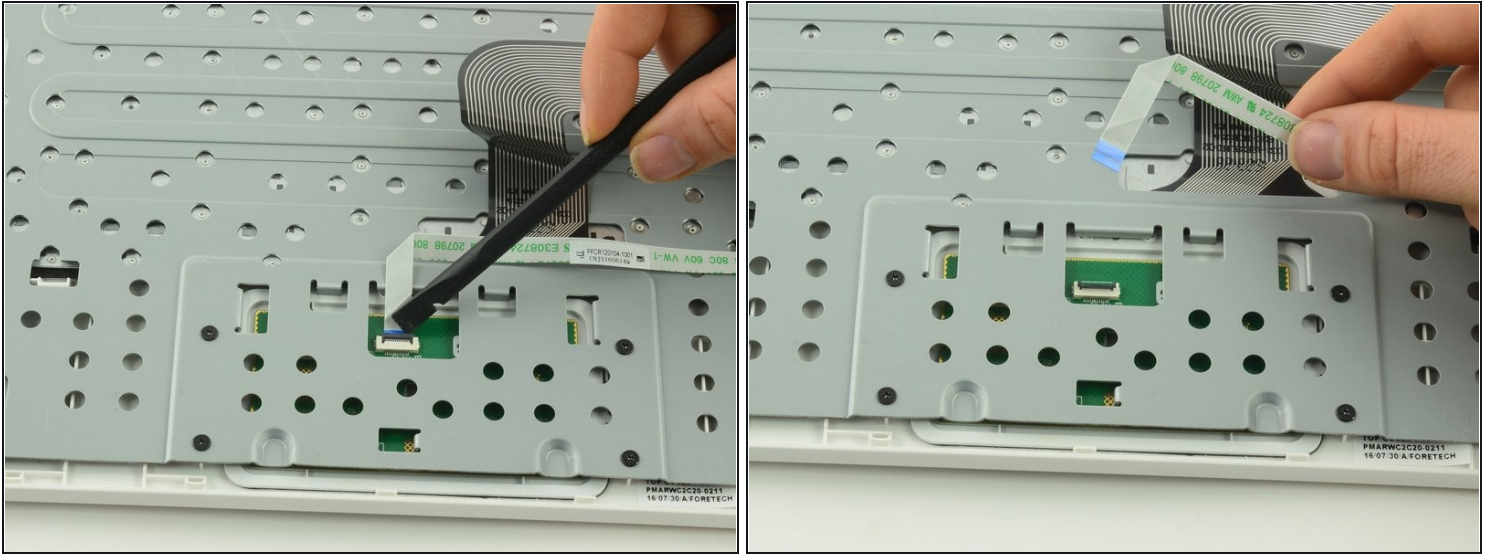
## Step 7



- Use a Phillips #000 screwdriver to unscrew the three 3.4mm screws.
- Lift the daughterboard away from the device to remove.

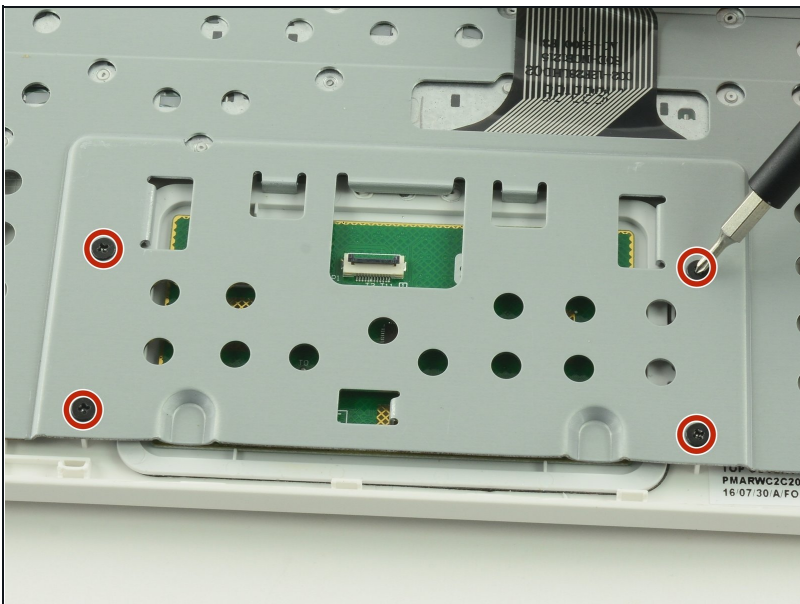


## Step 8 — Keyboard Frame Prerequisite



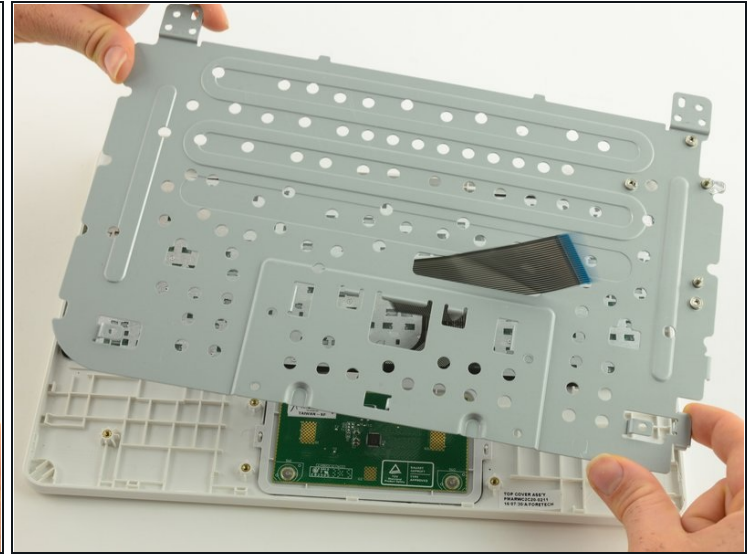
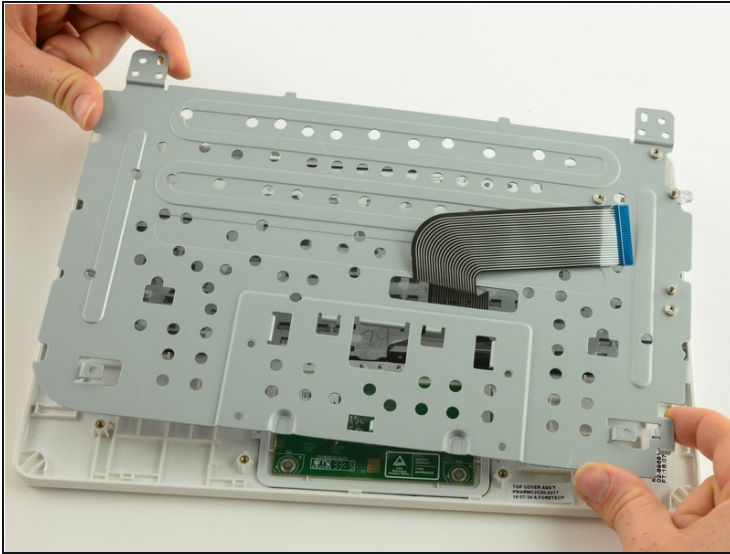
- Use a spudger to lift up the black retaining flap on the touchpad's ZIF connector.
- Pull the ribbon cable straight back to remove.

## Step 9



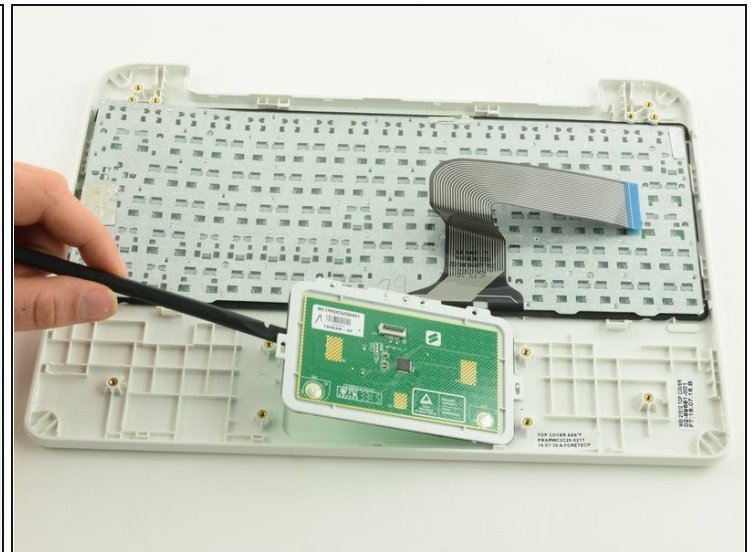
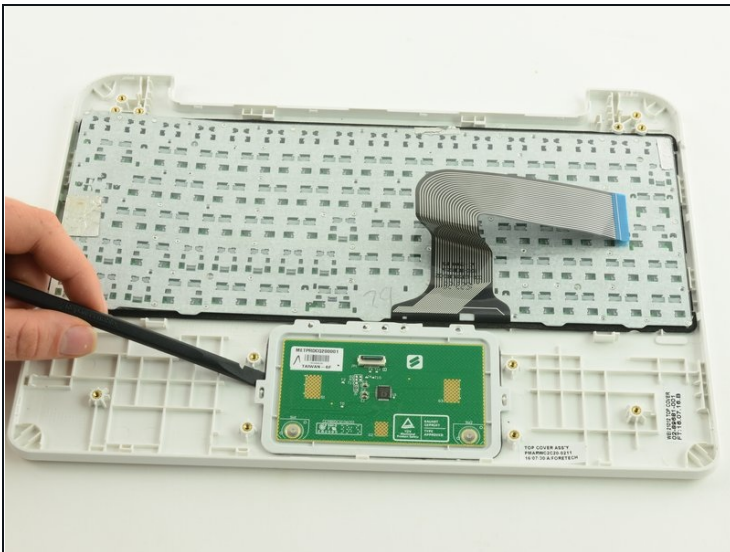
- Use a Phillips #00 screwdriver to unscrew the four 6.4mm screws holding the touchpad in place.

## Step 10



- Feed the ribbon cable through the hole in the metal frame.
- Left the metal frame away from the device.

## Step 11 — Touchpad



- Use a spudger to pry the touchpad away from the device.

To reassemble your device, follow these instructions in reverse order.