



Dell Inspiron B130 Screen Replacement

This guide will tell you how to replace the...

Written By: Patrick McNeil



INTRODUCTION

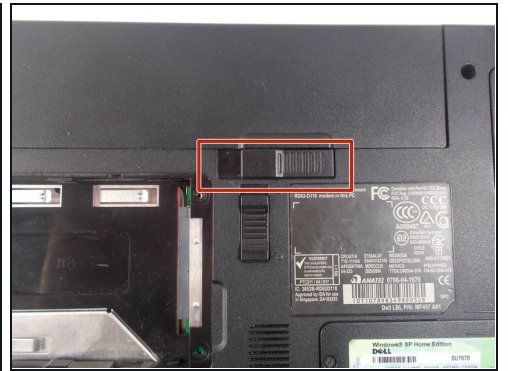
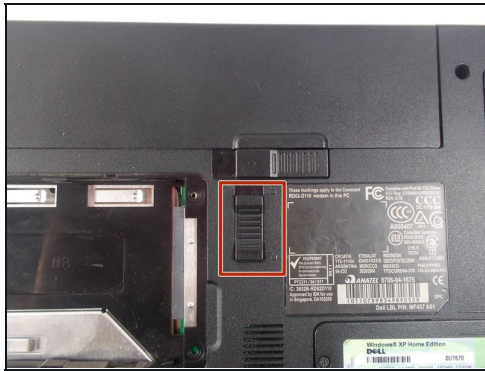
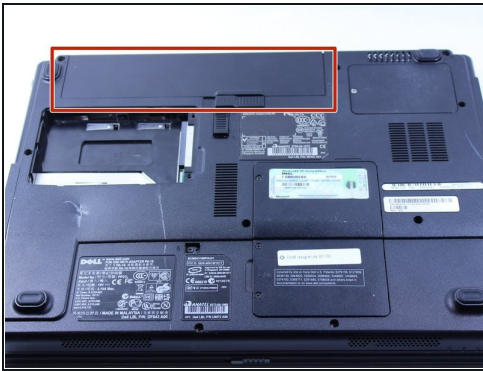
This guide will tell you how to replace the screen. The screen has issues very seldom as the only real way it ends up not displaying correctly is if the screen itself gets damaged or there is a connection issue within the laptop.

🔧 TOOLS:

Phillips #0 Screwdriver (1)

iFixit Opening Tool (1)

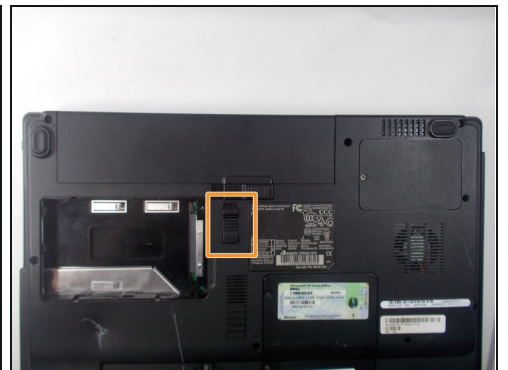
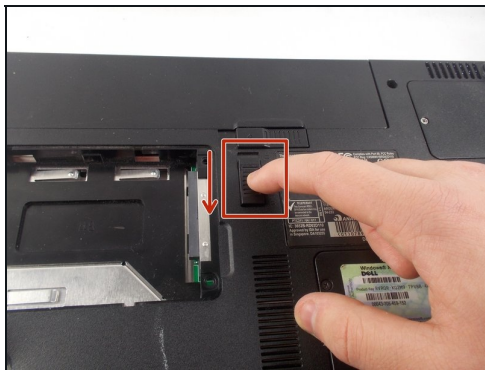
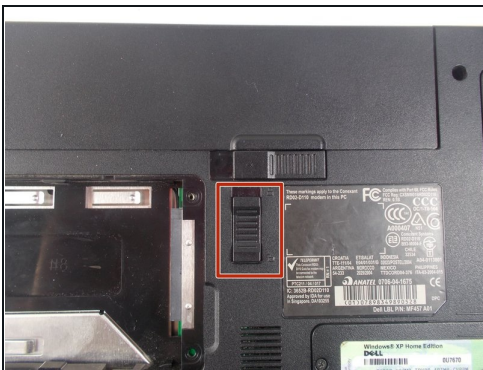
Step 1 — Battery



⚠ First, make sure your computer is turned off.

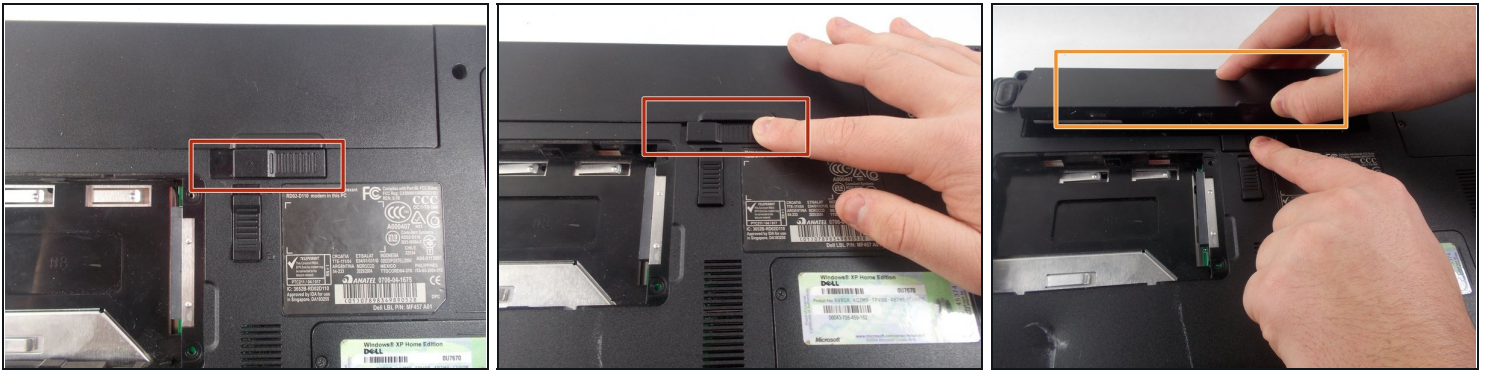
- Remove the battery by flipping the two switches under the battery and pulling it out

Step 2



- Push the tab from the battery, downwards to unlock the battery.
- The tab should be in the position next to the unlocked indicator.

Step 3



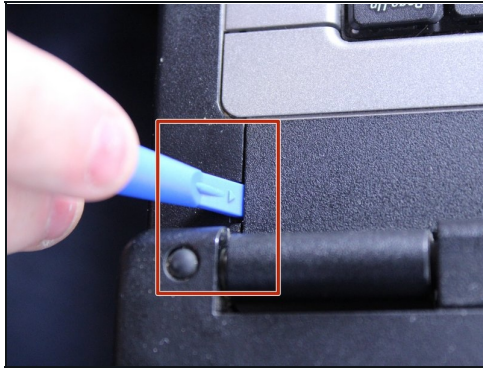
- Now, push the other tab (the one right under the battery) from right to left.
- Now the battery will be loose; lift the battery up and out of the computer.

Step 4 — Keyboard



- Put down the computer and open up the screen.
- There is a long piece of plastic underneath the screen that you will have to remove.

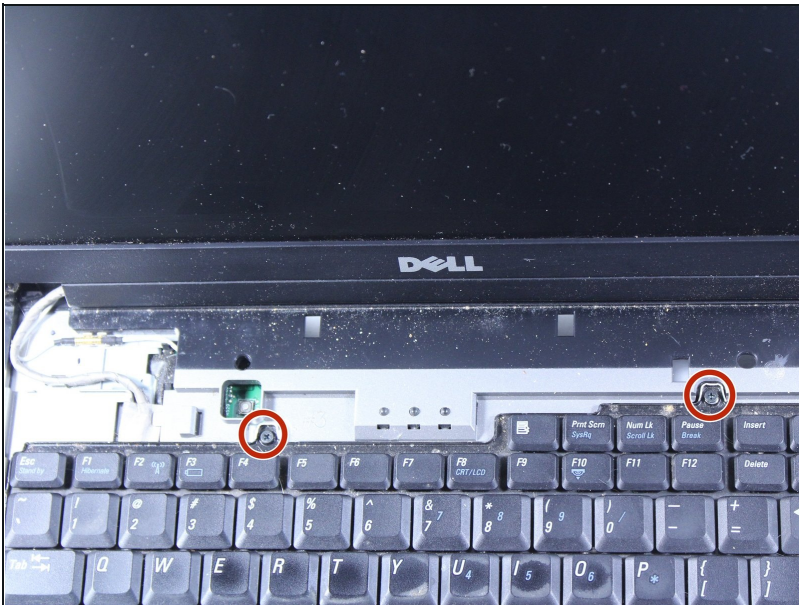
Step 5



⚠ When you pry the plastic plate off, be careful and pry gently so you do not crack the plastic.

- Insert the plastic opening tool into the little slot.
- Lift up gently and remove the plastic cover.

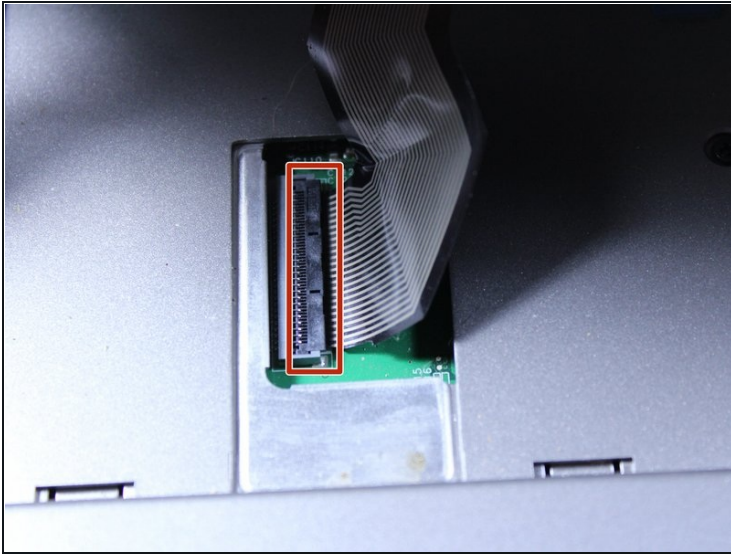
Step 6



- Remove the two 4mm screws at the top of the keyboard.

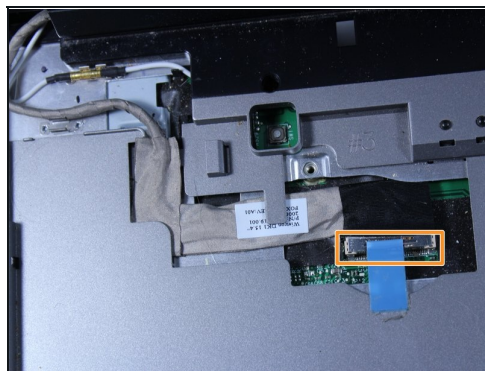
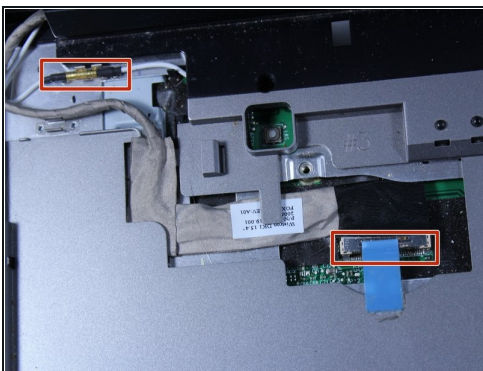
⚠ The keyboard is now loose but don't pull it out just yet. It is still connected underneath. Be gentle when lifting keyboard so you do not damage this connection.

Step 7



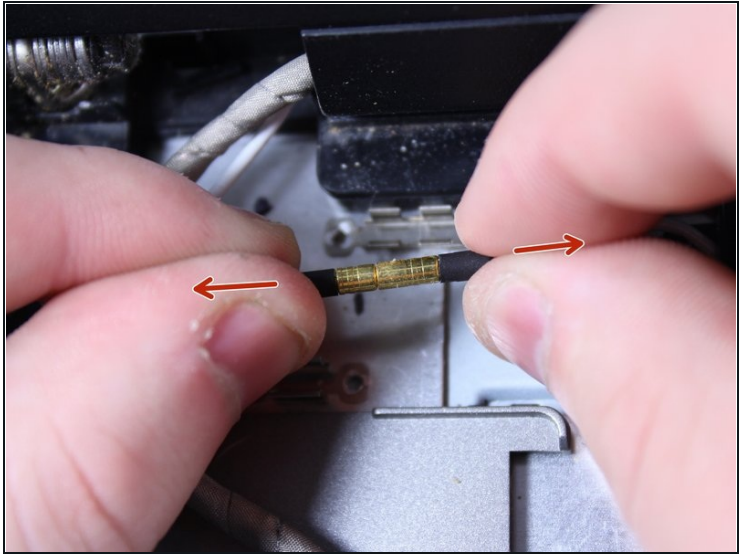
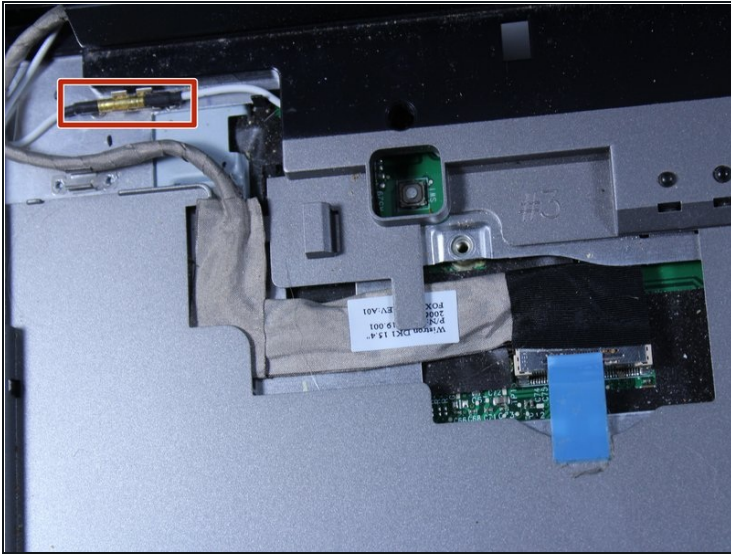
- Lift keyboard up slightly and you will see the keyboard connection.
- This black tab has to be lifted up to remove the keyboard.
- Put your finger underneath the tab and pull back gently as indicated.
- You can now remove the keyboard.

Step 8 — Screen



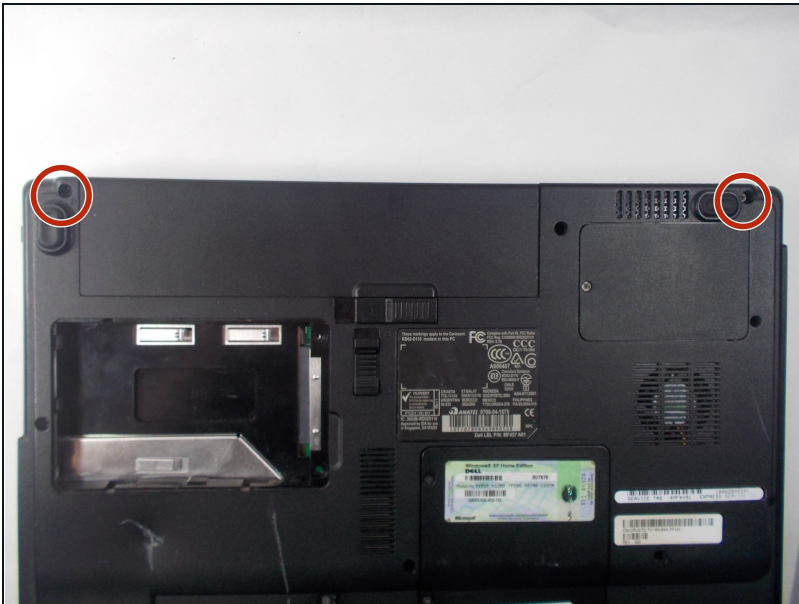
- This reveals two connections that must be removed.
- Remove the one with the blue tape by lifting up on the tape gently.

Step 9



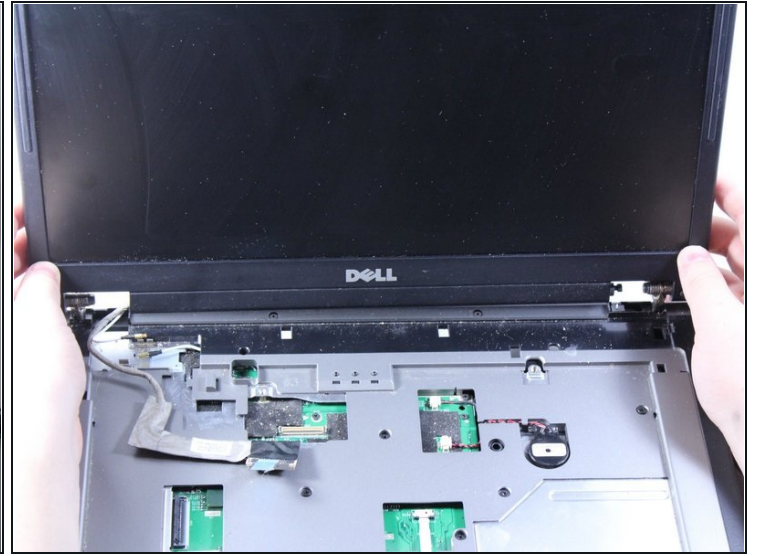
- Remove the other connection by pulling apart gently.

Step 10



- Remove the two 6mm screws that are directly under the screen.

Step 11



- Close the computer and flip it over so that the back is facing up.
- Remove the two 6mm screws that are behind each of the screens pivot points.
- Open up the screen and now it can be lifted up and off of the computer.

To reassemble your device, follow these instructions in reverse order.