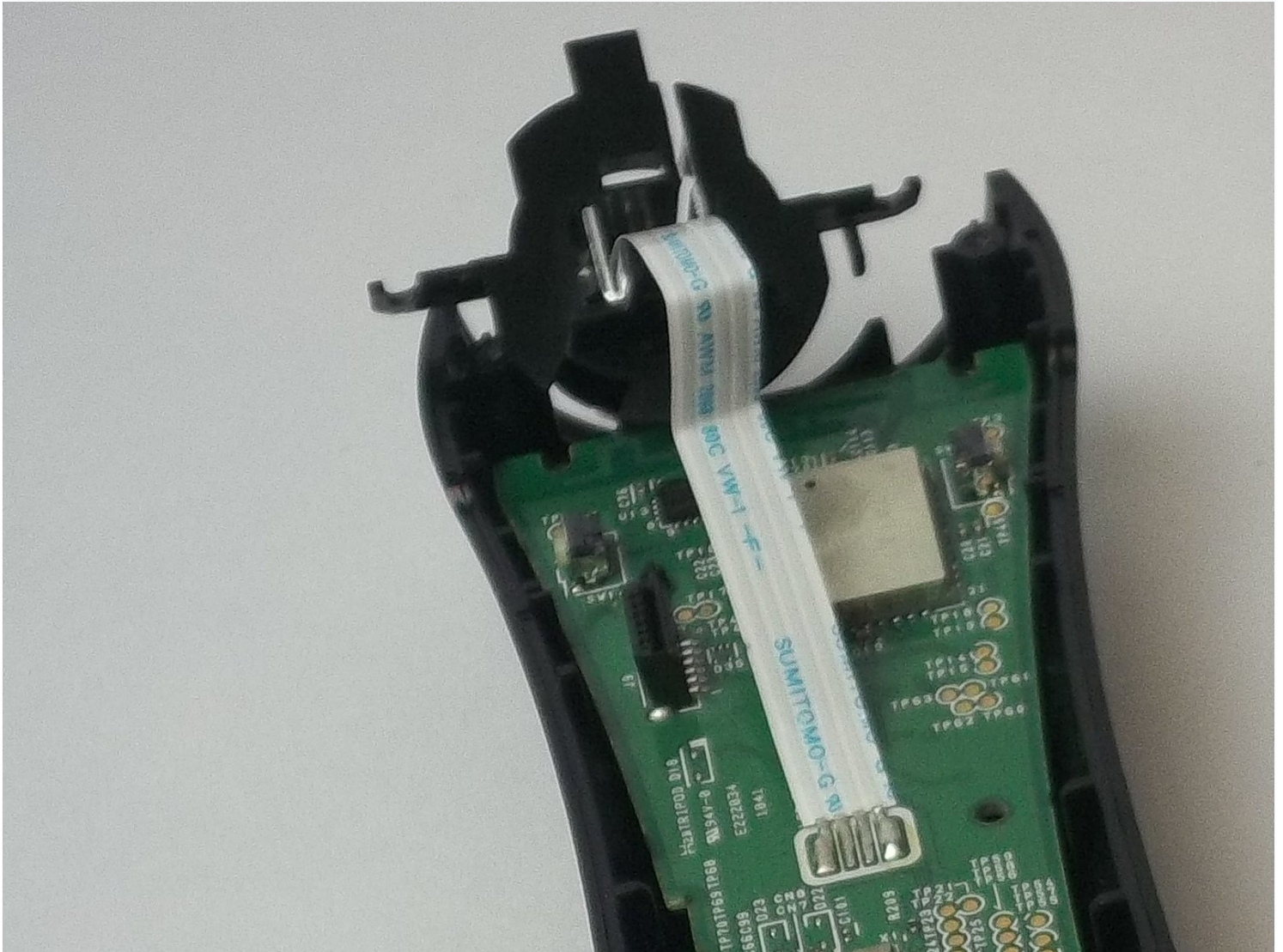




# PlayStation Move LED Light Replacement

Use this guide to replace the LED light on the...

Written By: Maritza Martinez



# INTRODUCTION

Use this guide to replace the LED light on the Playstation Move

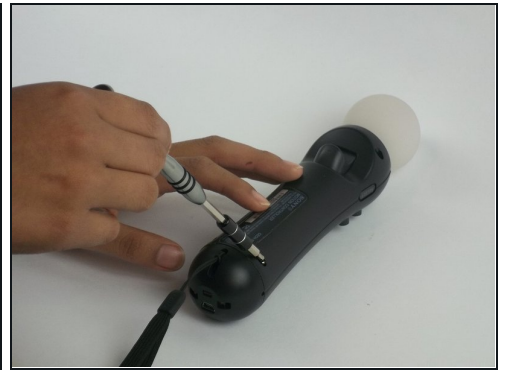
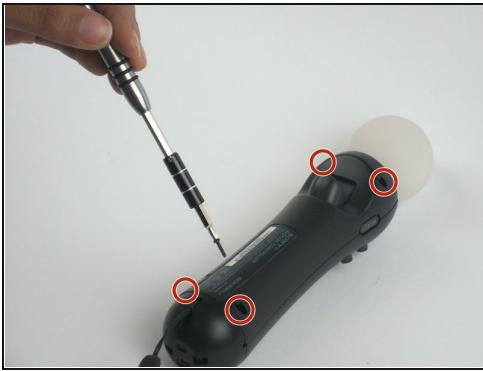
## TOOLS:

[Phillips #0 Screwdriver](#) (1)

[Tweezers](#) (1)

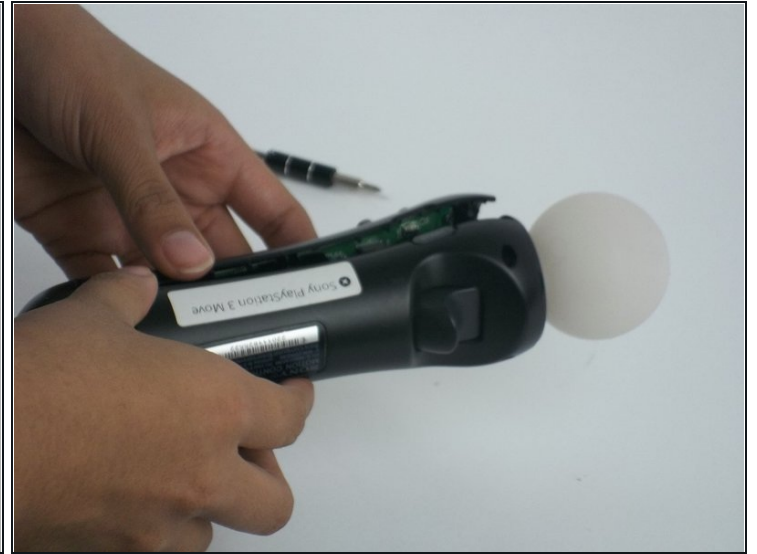
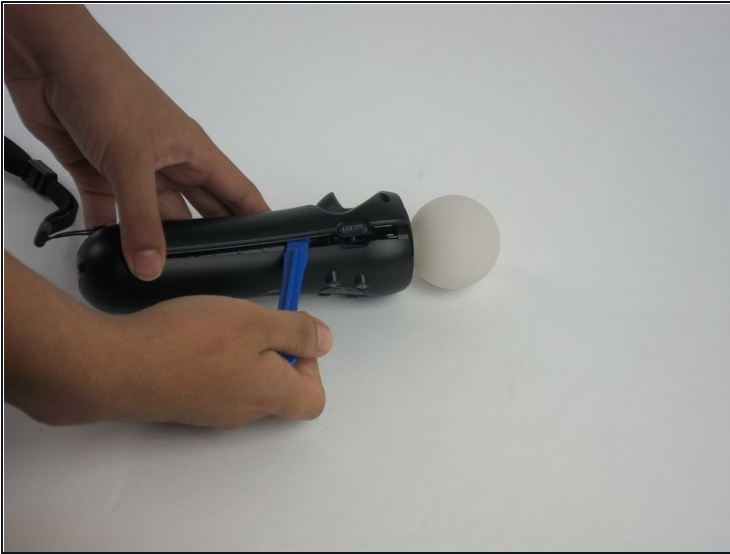
[iFixit Opening Tool](#) (1)

## Step 1 — Battery



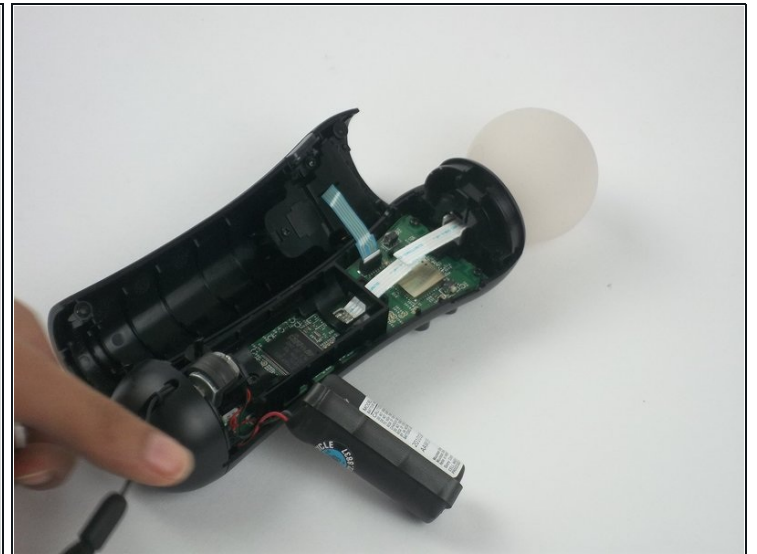
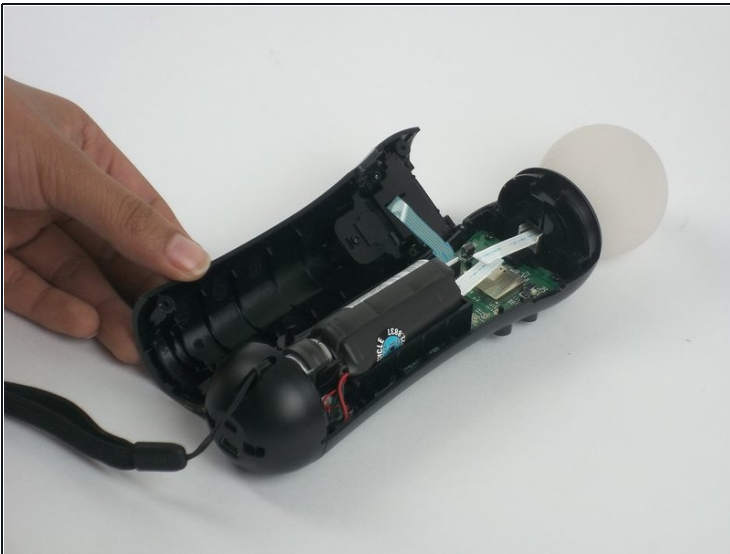
- Using a Phillips #0 screwdriver, remove the four 10mm screws located on the back of the device.

## Step 2



- Insert the plastic opening tool at the indent.
- Gently use a forward and backward motion to safely pop open the cover.
- Using your hands to further pull it apart.

## Step 3

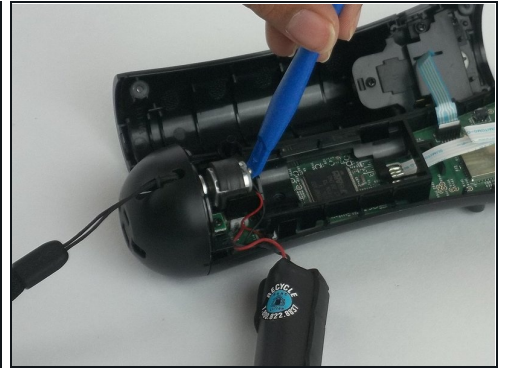
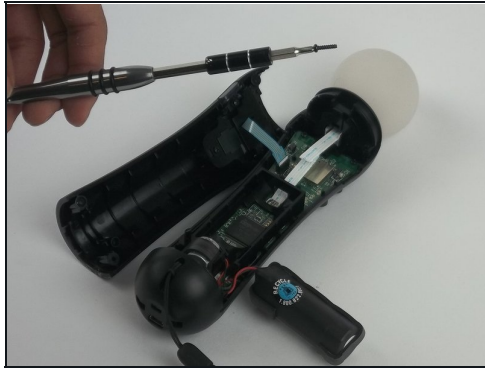
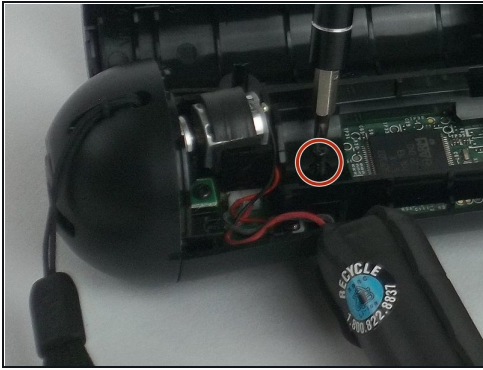


- Once the device is opened, lift the battery out of the black plastic holder.

⚠ Carefully pull the battery out and ensure that its wires are still connected to the inside.

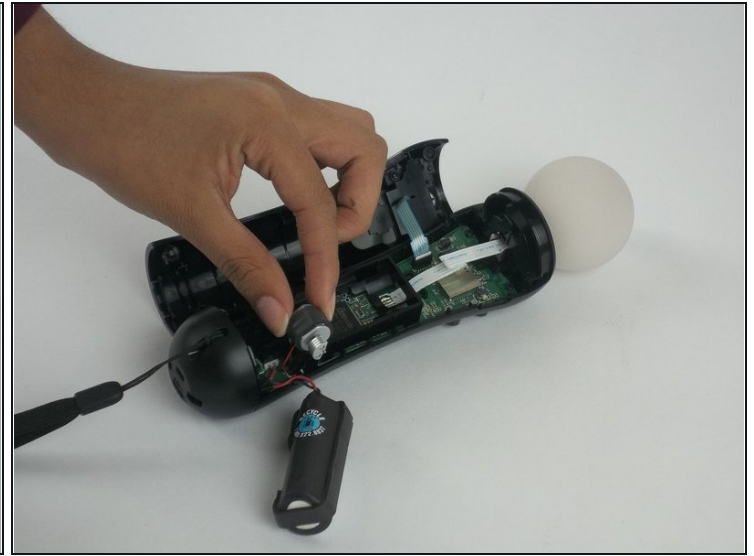
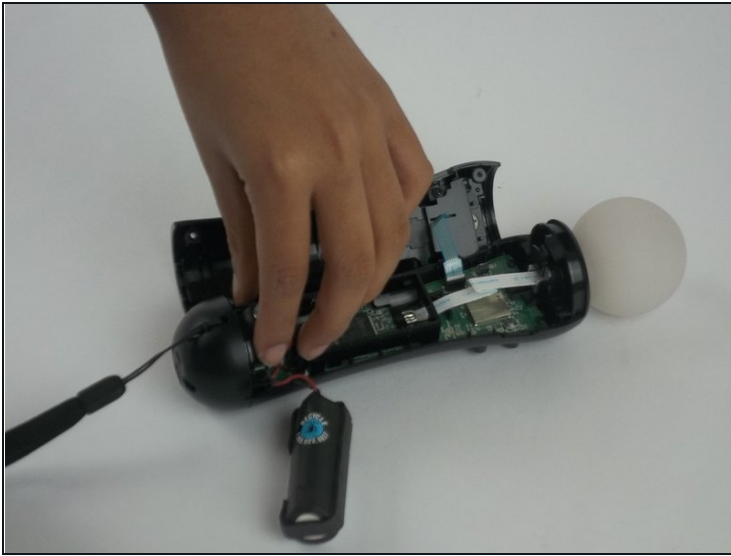


## Step 4



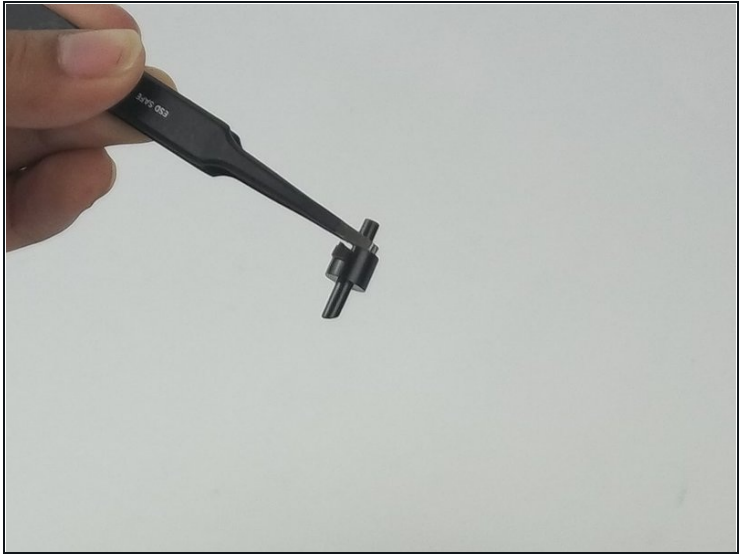
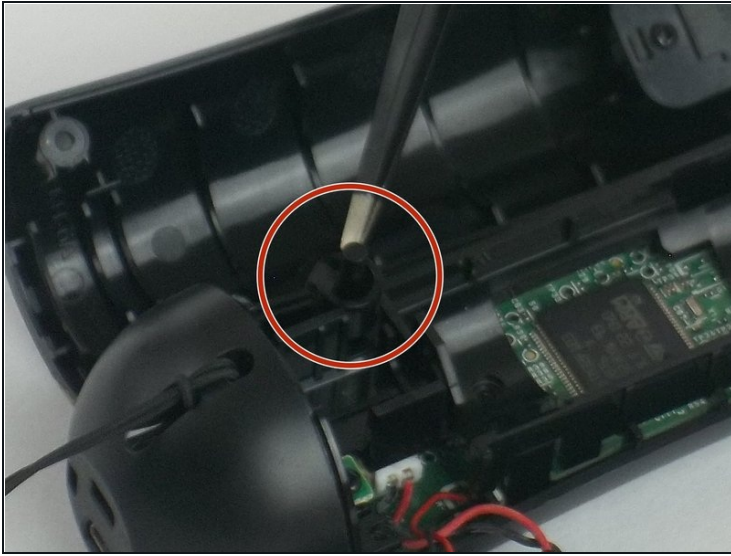
- Using a Phillips head screwdriver, remove the 9mm screw located to the right of the battery, which is connected to the inner plastic frame.
- Using the plastic opening tool carefully take out the grey cylindrical piece (vibrator) that is also attached to a wire.

## Step 5



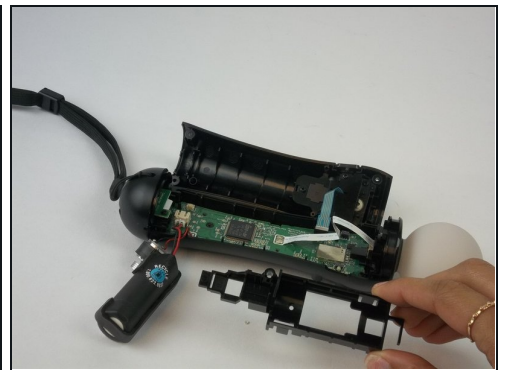
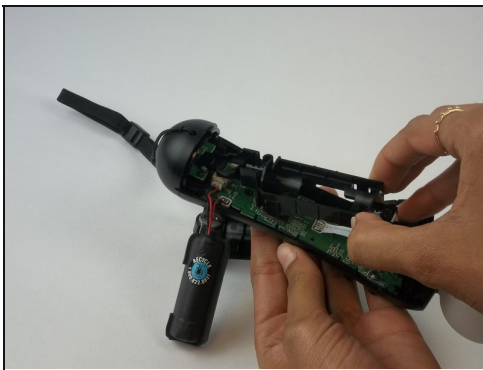
- Gently pull out the small grey cylindrical piece (vibrator).
- ① Removing this piece makes it easier to access the wire connection of the battery and remove it.

## Step 6



- Using [tweezers](#), remove the small piece with a cylindrical top that is located to the left of the inner plastic frame.

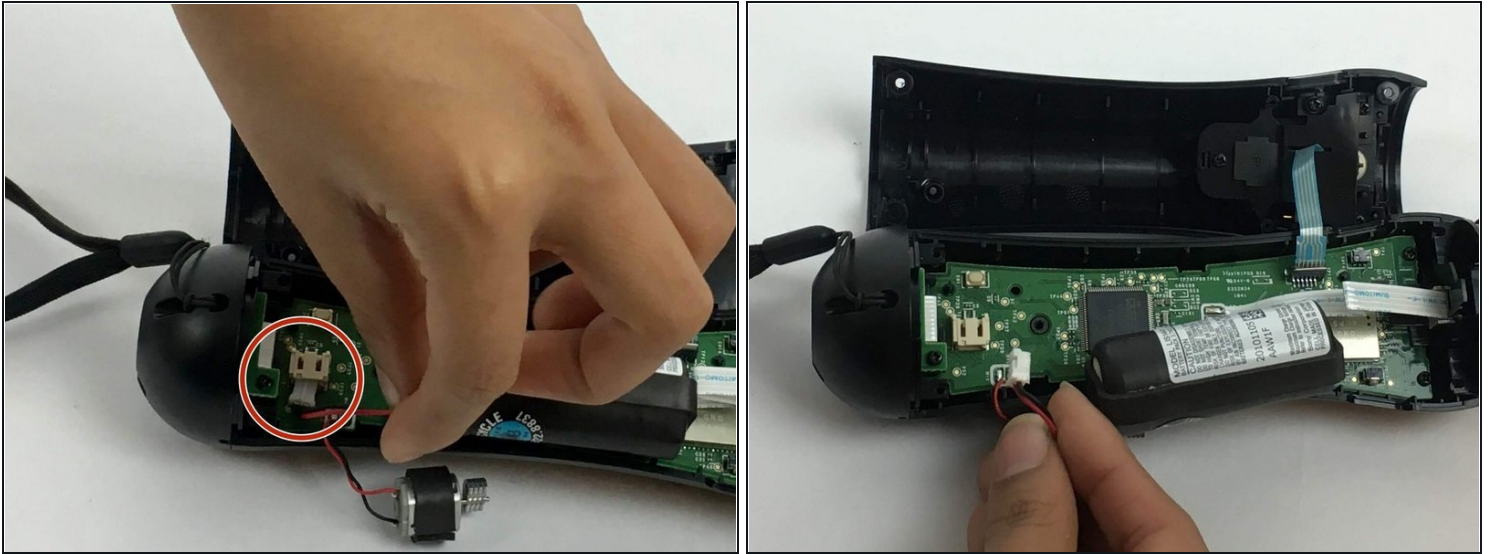
## Step 7



- Using one hand to hold the device, and the other hand to squeeze the inner plastic frame.
- Remove by squeezing the inner plastic frame, lift and pull it towards you.

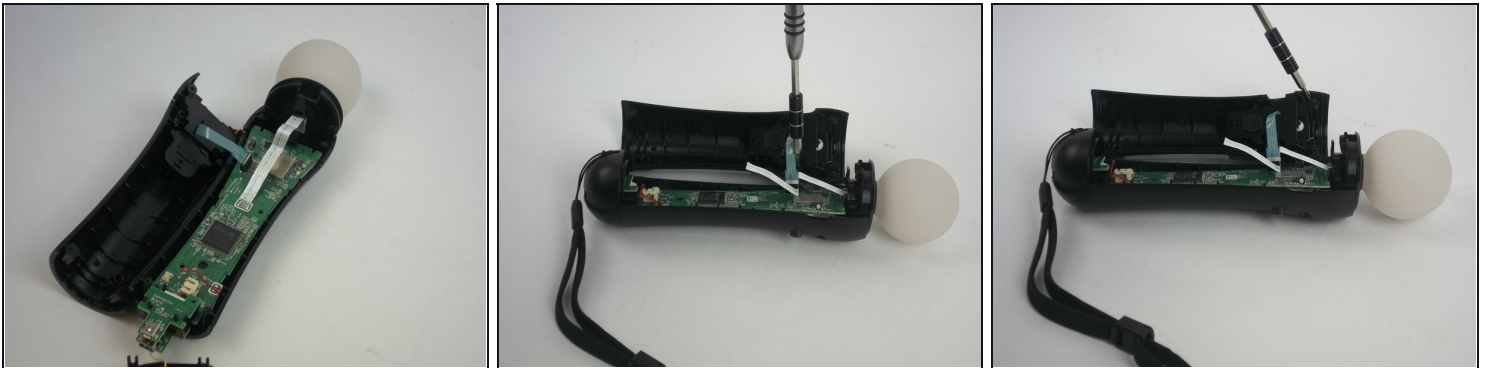
⚠ While removing the frame, be extremely careful because it could damage the frame or the motherboard.

## Step 8



- Gently pull on the white piece connecting the battery and the connector.

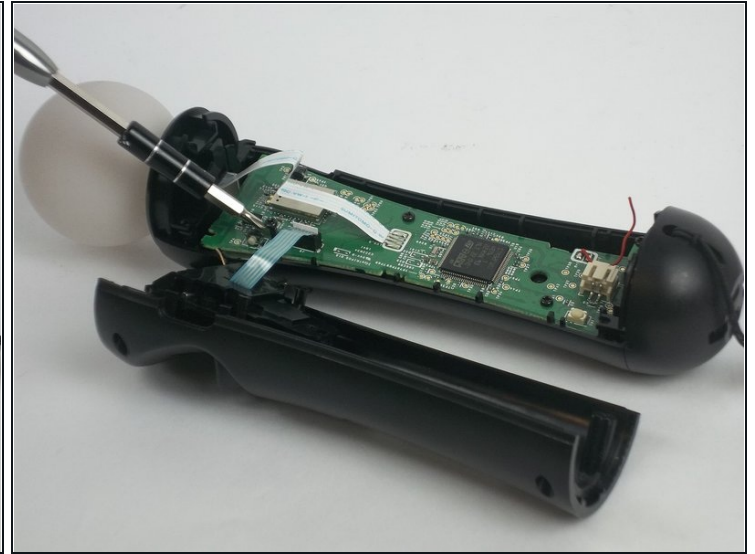
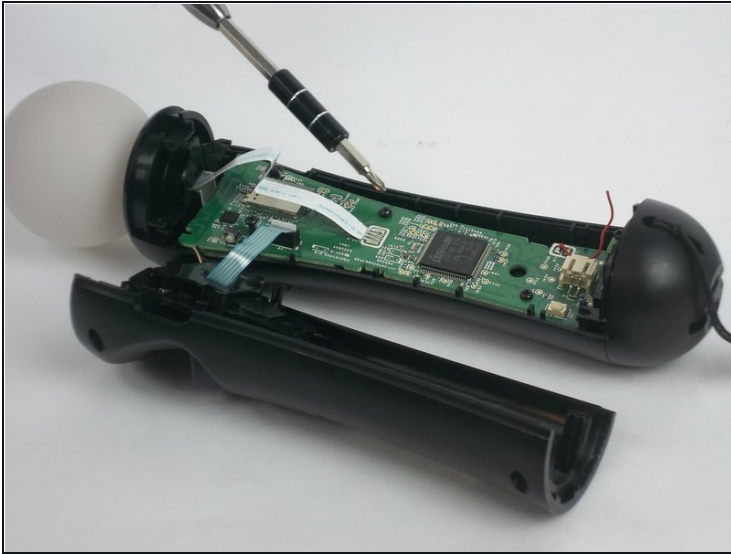
## Step 9 — Motherboard



- Remove the five 1.2 mm screws from upper portion of the controller.
- ① If you are replacing the **trigger button**, continue to step 13.

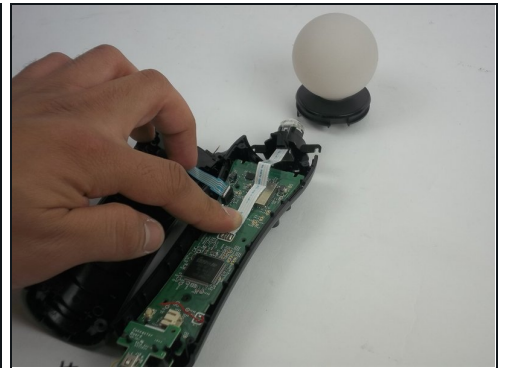
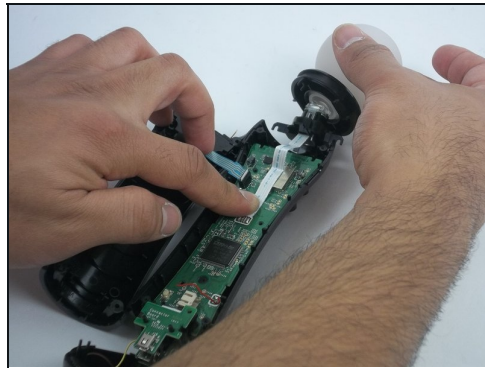
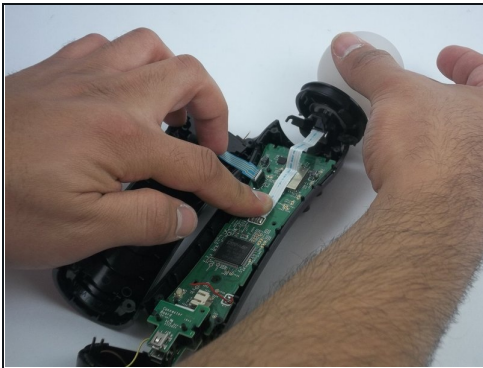


## Step 10



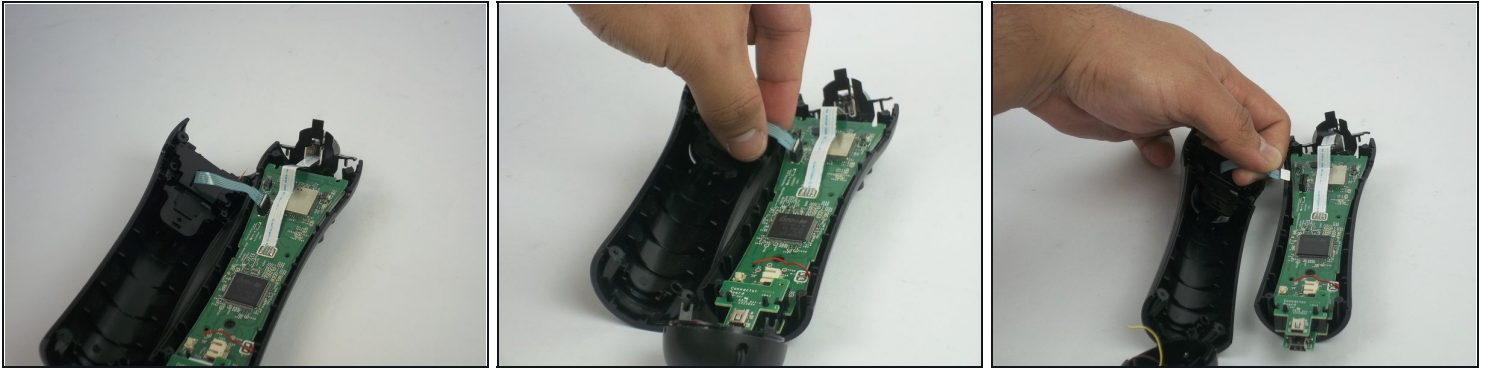
- Remove the two 1.2mm Phillips #1 screws.

## Step 11



- Cautiously remove the circular white piece at the top without removing the LED inside.

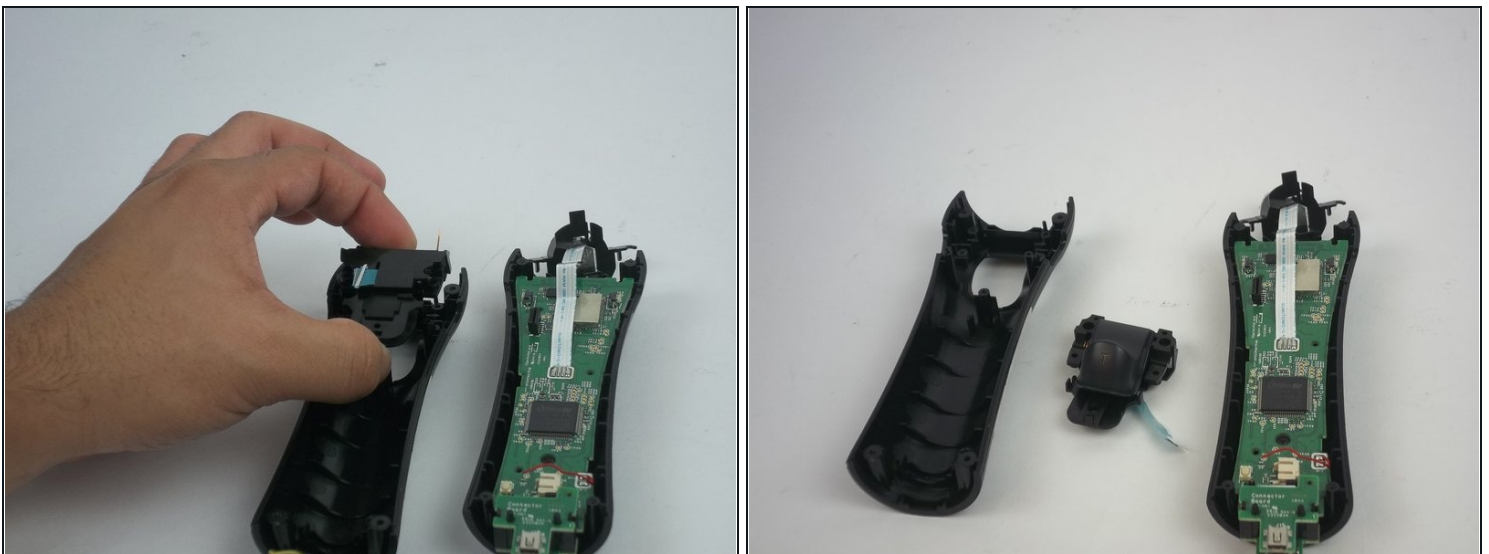
## Step 12



- Remove the blue strip that is connected to the trigger button from the motherboard.

⚠ Be careful to gently detach it from the motherboard. The strip may rip if too much strength is applied.

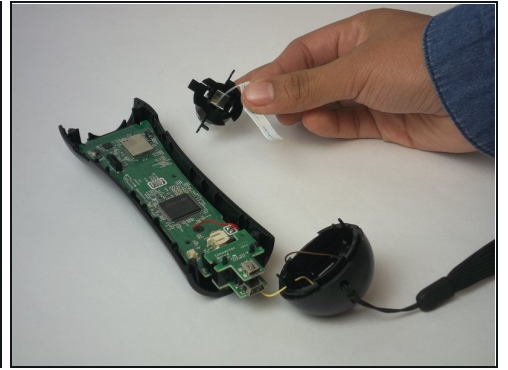
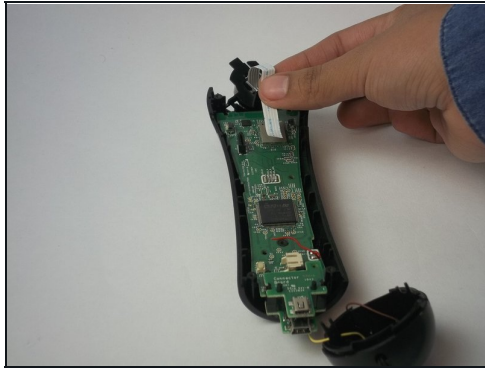
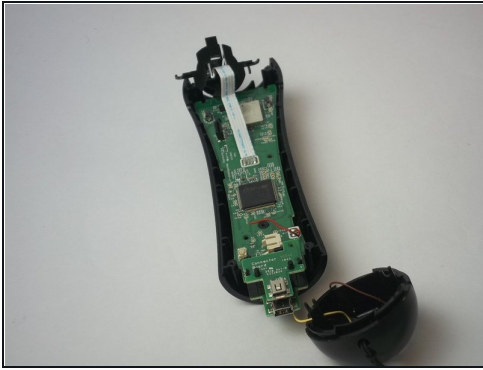
## Step 13



- Remove the trigger button from the controller.

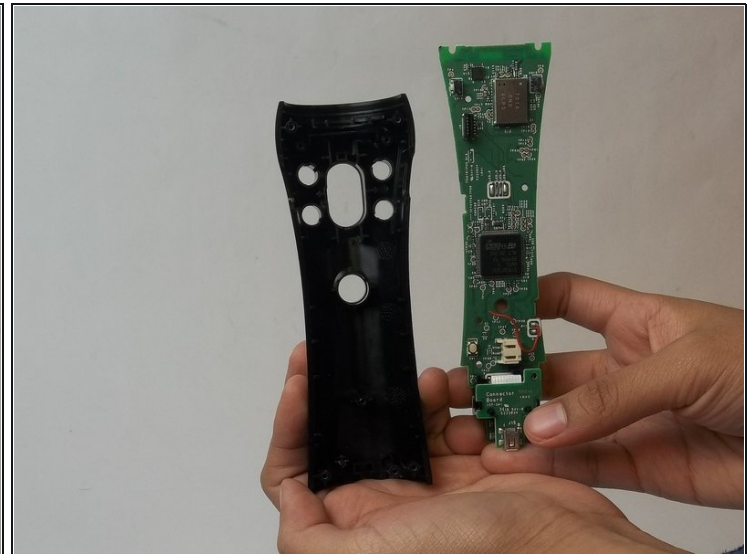


## Step 14



- Remove the LED light by removing the white strip.
- ① If you are replacing the **LED light**, continue to Step 17.

## Step 15



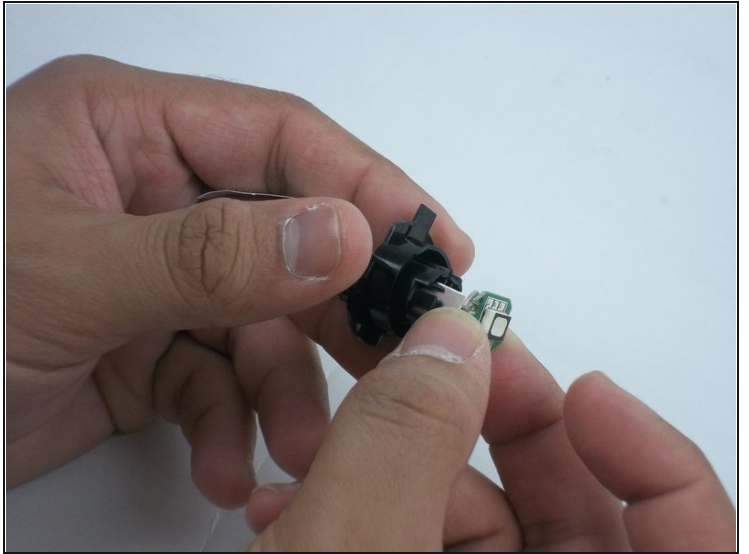
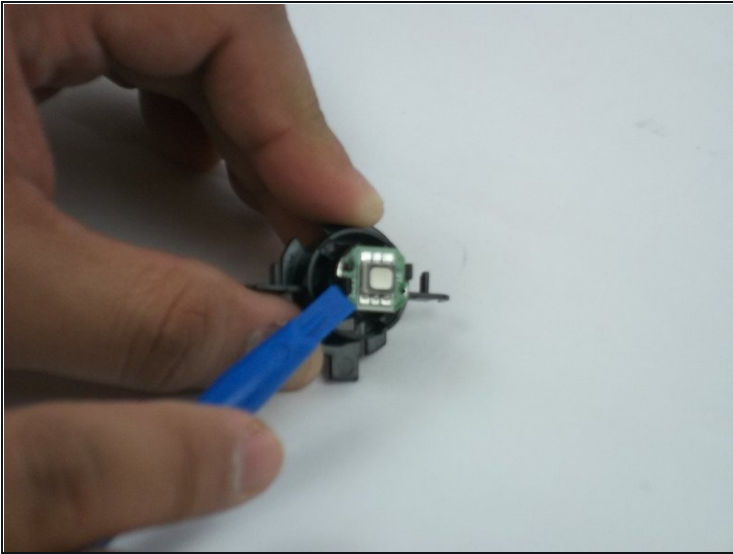
- Remove the motherboard from the plastic case.

## Step 16 — LED Light



- Insert [tweezers](#) between the LED case and the LED clear plastic cover.
- Lift the edge of the LED clear cover clip to be able to remove the cover.
- Repeat the previous step to the other side.
- Remove the LED cover.

## Step 17



- Remove the LED board using a blue opening tool to lift the board.
  - After the board is loose, remove the LED board.
- 

To reassemble your device, follow these instructions in reverse order.