



Insignia Flex 11.6 Motherboard Replacement

The motherboard replacement also replaces the...

Written By: Connor Sweeney



INTRODUCTION

The motherboard replacement also replaces the charging port because they come as 1 component.

TOOLS:

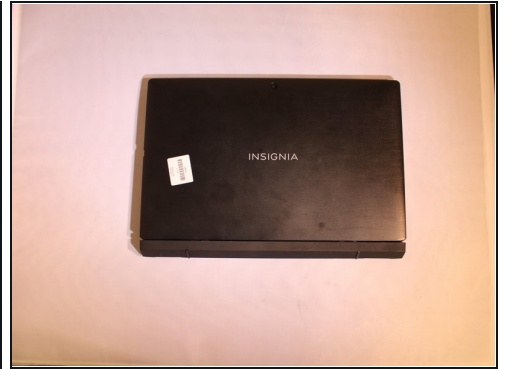
[Plastic Cards](#) (1)

[Japanese Industrial Standard #1](#) (1)

[iFixit Opening Tool](#) (1)

[Tweezers](#) (1)

Step 1 — Power Removal



 Before working on the device, make sure the device is off and not plugged into any power source for safety reasons. Failure to comply could result in injury.

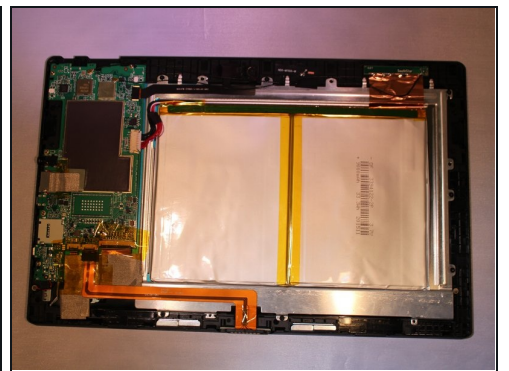
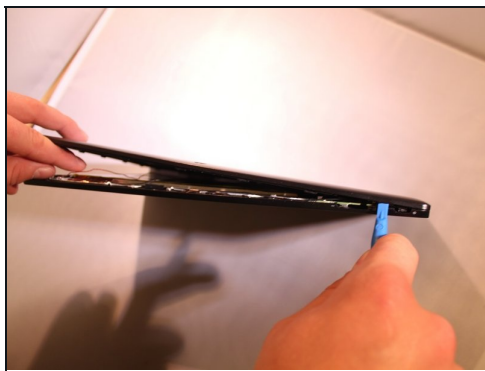
- Place the device on a firm surface with the device screen facing down.

Step 2



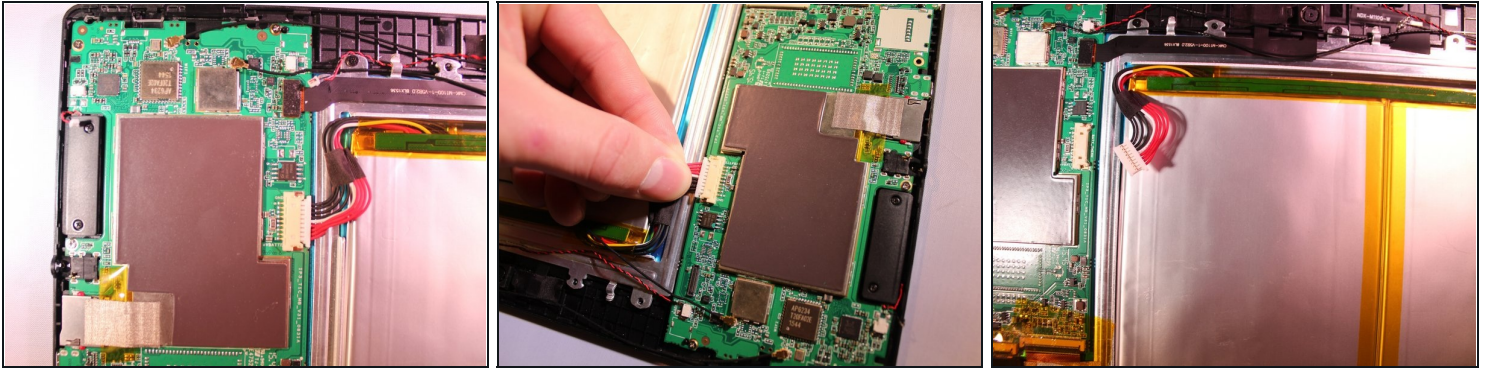
- Remove 2, 6.1 mm Phillips J000 screws from the back of the device.
- ① If any screws are stripped, refer to the [ifixit guide](#) for how to remove a stripped screw.
[How to Remove a Stripped Screw](#)

Step 3



- Using a plastic tool and the [plastic card](#), gently pry off the back cover.

Step 4



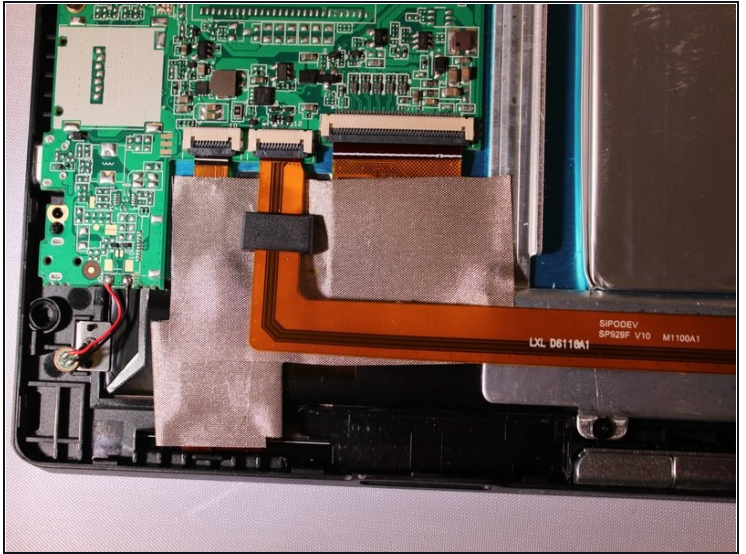
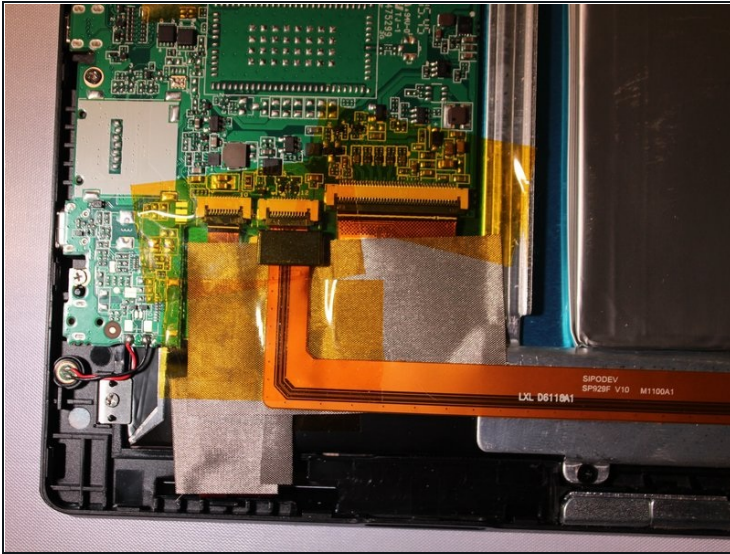
- Using tweezers, remove the electrical connector that connects to the battery to remove the power to the battery.

Step 5 — Motherboard



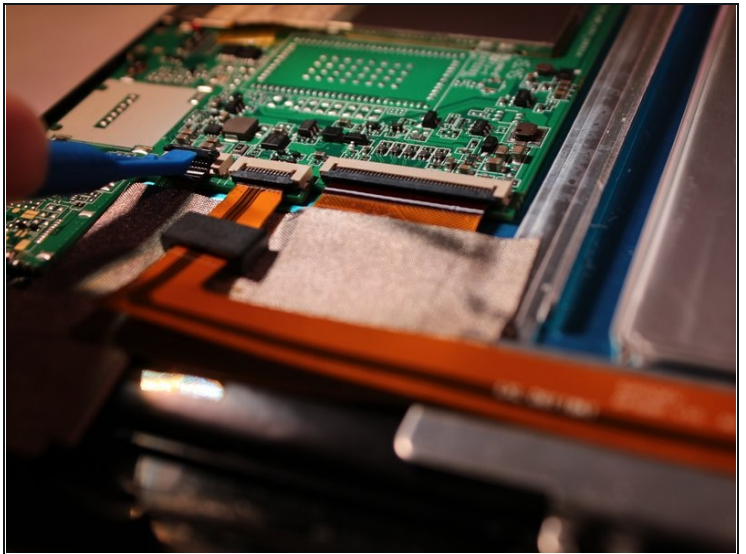
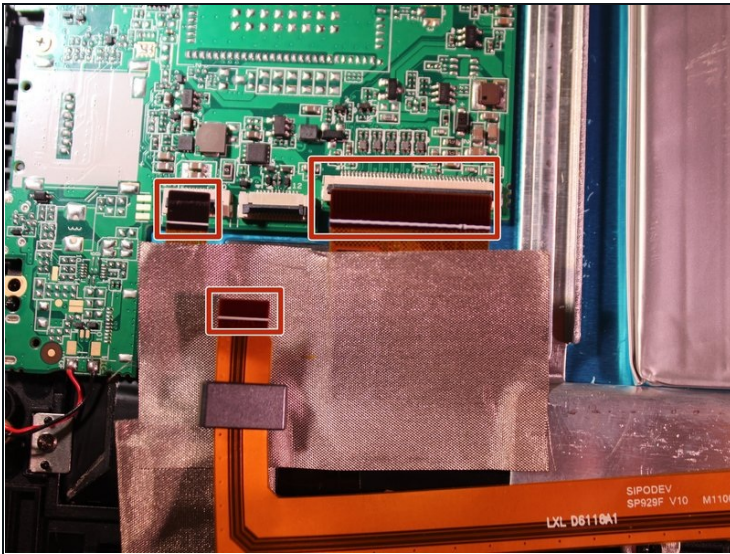
- Unplug the 2 speaker's connection from the motherboard.

Step 6



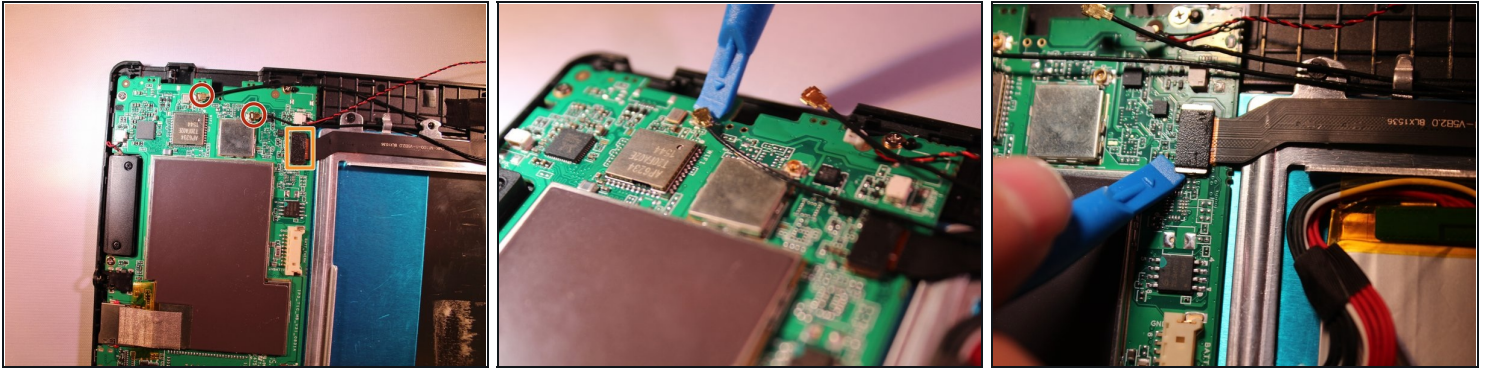
- Peel the yellow tape off from on top of the electrical connectors.

Step 7



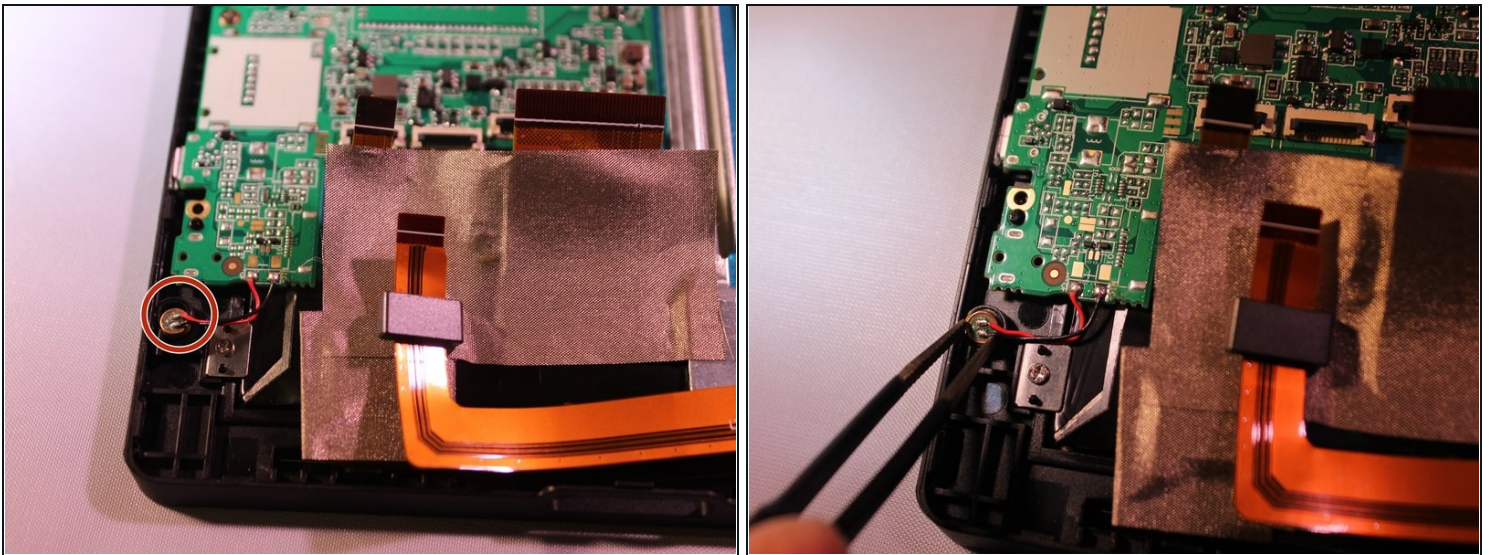
- Flip up the black cover pieces to expose the 3 electrical connectors.
- Remove 3 electrical connectors by gently pulling back on them with some tweezers.

Step 8



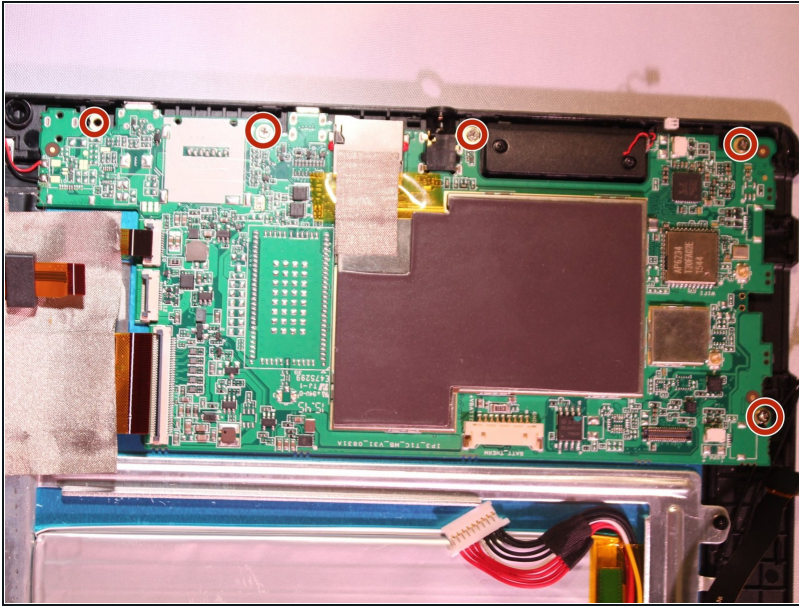
- Unplug the 2 black ground wires from the motherboard by gently prying on them until they unhook from the motherboard.
- Remove the black camera connector by gently prying on it until it unhooks.

Step 9



- Using tweezers, remove the microphone from the the plastic cover.

Step 10



- Remove 5 - 3.4 mm Phillips J000 screws from the motherboard.
- ⓘ Motherboard pops out.

To reassemble your device, follow these instructions in reverse order.