



Power Removal

In order for you to remove components with...

Written By: Connor Sweeney



INTRODUCTION

In order for you to remove components with power supplied to them, you need to remove the power from the device by disconnecting from the main power source.

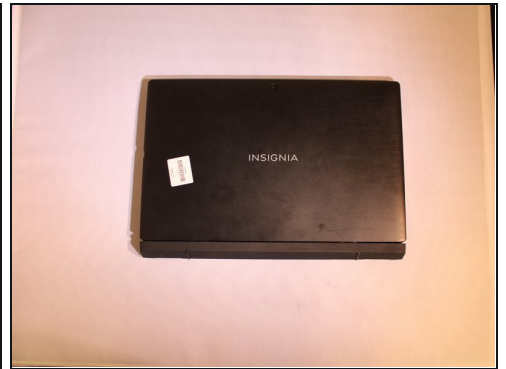
TOOLS:


[Plastic Cards](#) (1)

[Japanese Industrial Standard #1](#) (1)

[iFixit Opening Tool](#) (1)

Step 1 — Power Removal



 Before working on the device, make sure the device is off and not plugged into any power source for safety reasons. Failure to comply could result in injury.

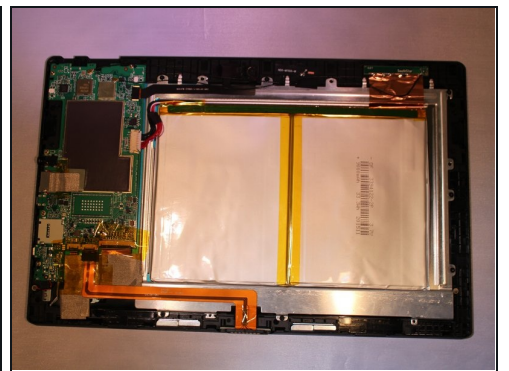
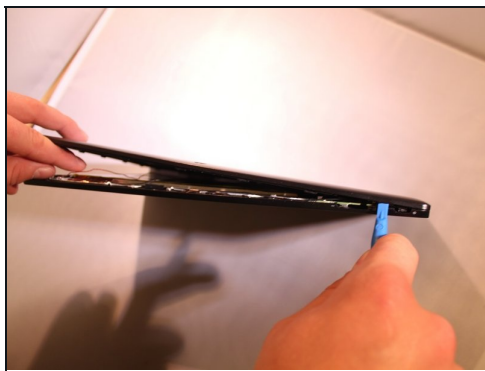
- Place the device on a firm surface with the device screen facing down.

Step 2



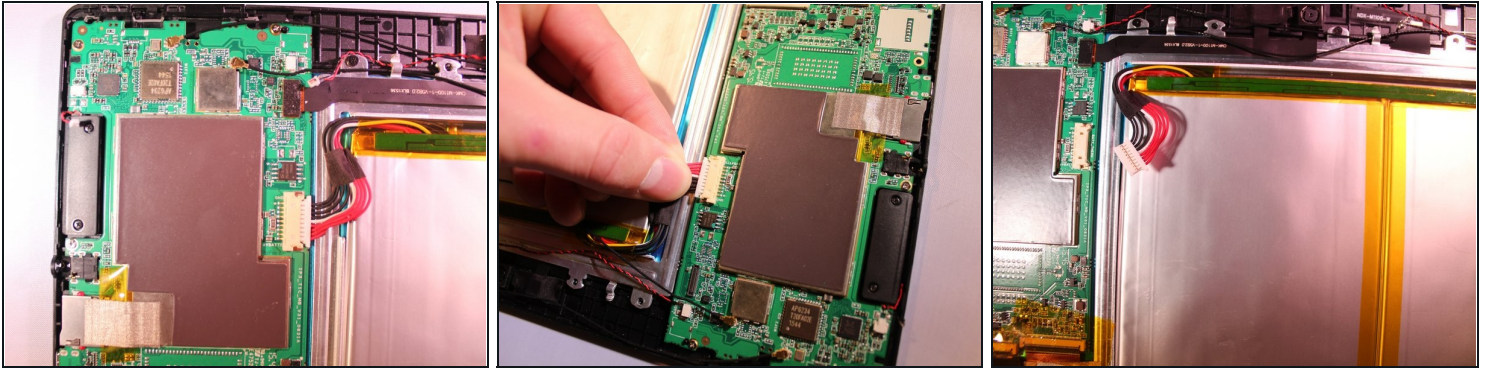
- Remove 2, 6.1 mm Phillips J000 screws from the back of the device.
- ① If any screws are stripped, refer to the [ifixit guide](#) for how to remove a stripped screw.
[How to Remove a Stripped Screw](#)

Step 3



- Using a plastic tool and the [plastic card](#), gently pry off the back cover.

Step 4



- Using [tweezers](#), remove the electrical connector that connects to the battery to remove the power to the battery.
-

To reassemble your device, follow these instructions in reverse order.