



## Power Removal

In order for you to remove components with...

Written By: Connor Sweeney



# INTRODUCTION

In order for you to remove components with power supplied to them, you need to remove the power from the device by disconnecting from the main power source.

---

## TOOLS:

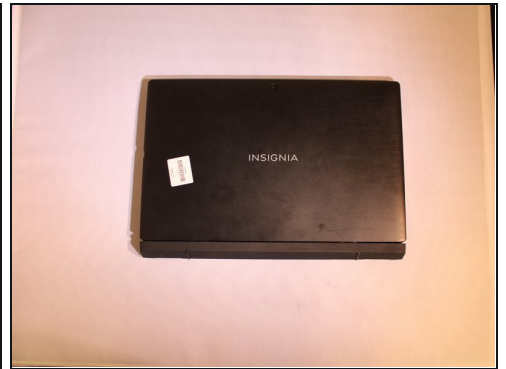
[Plastic Cards](#) (1)


[Japanese Industrial Standard #1](#) (1)

[iFixit Opening Tool](#) (1)

---

## Step 1 — Power Removal



 Before working on the device, make sure the device is off and not plugged into any power source for safety reasons. Failure to comply could result in injury.

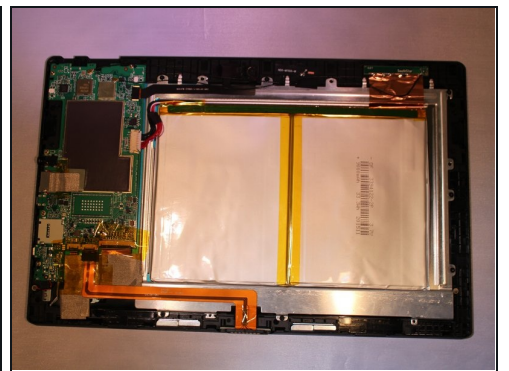
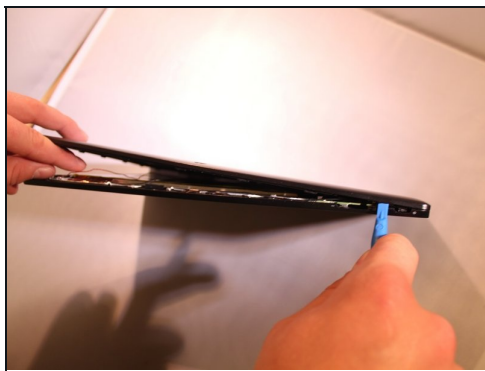
- Place the device on a firm surface with the device screen facing down.

## Step 2



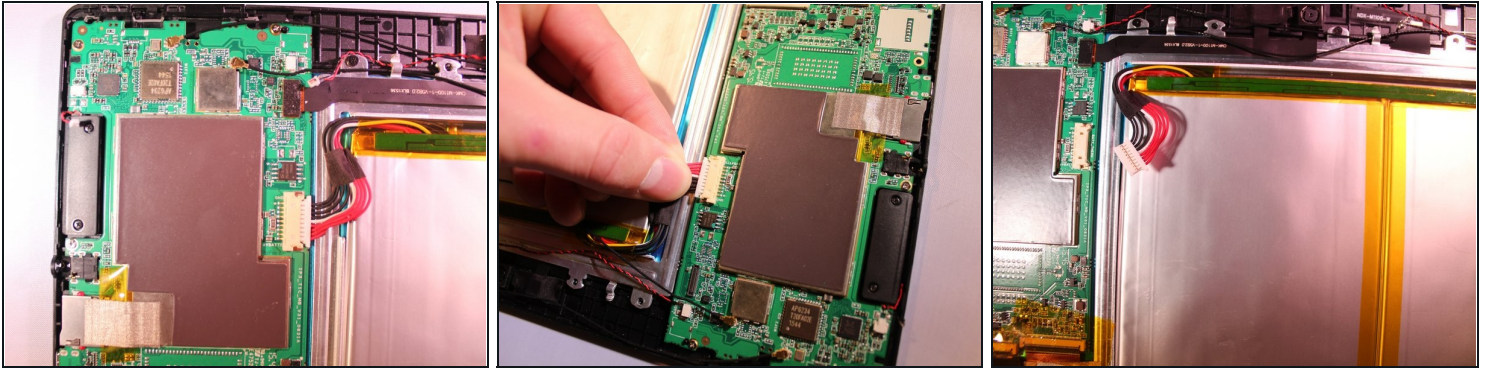
- Remove 2, 6.1 mm Phillips J000 screws from the back of the device.
- ① If any screws are stripped, refer to the [ifixit guide](#) for how to remove a stripped screw.  
[How to Remove a Stripped Screw](#)

## Step 3



- Using a plastic tool and the [plastic card](#), gently pry off the back cover.

## Step 4



- Using tweezers, remove the electrical connector that connects to the battery to remove the power to the battery.

---

To reassemble your device, follow these instructions in reverse order.