



Insignia Flex 11.6 Speakers Replacement

This guide will provide you with step by step...

Written By: Connor Sweeney



INTRODUCTION

This guide will provide you with step by step instructions on how to replace the speakers inside the device. This replacement should only be required for faulty speakers.

TOOLS:

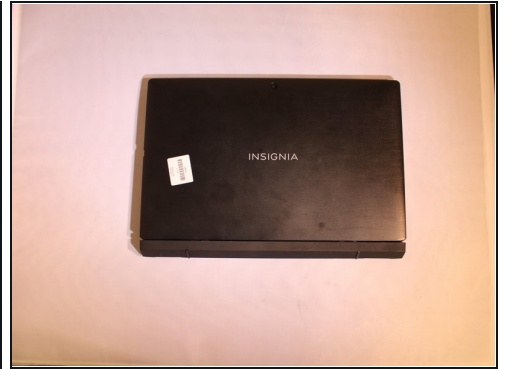
Plastic Cards (1)


Japanese Industrial Standard #1 (1)

iFixit Opening Tool (1)

Tweezers (1)

Step 1 — Power Removal



 Before working on the device, make sure the device is off and not plugged into any power source for safety reasons. Failure to comply could result in injury.

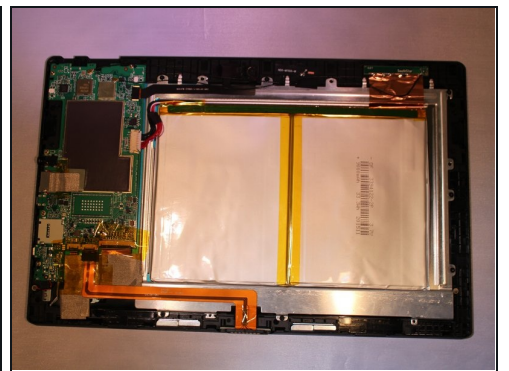
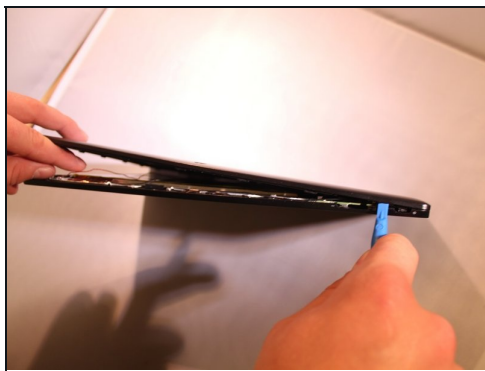
- Place the device on a firm surface with the device screen facing down.

Step 2



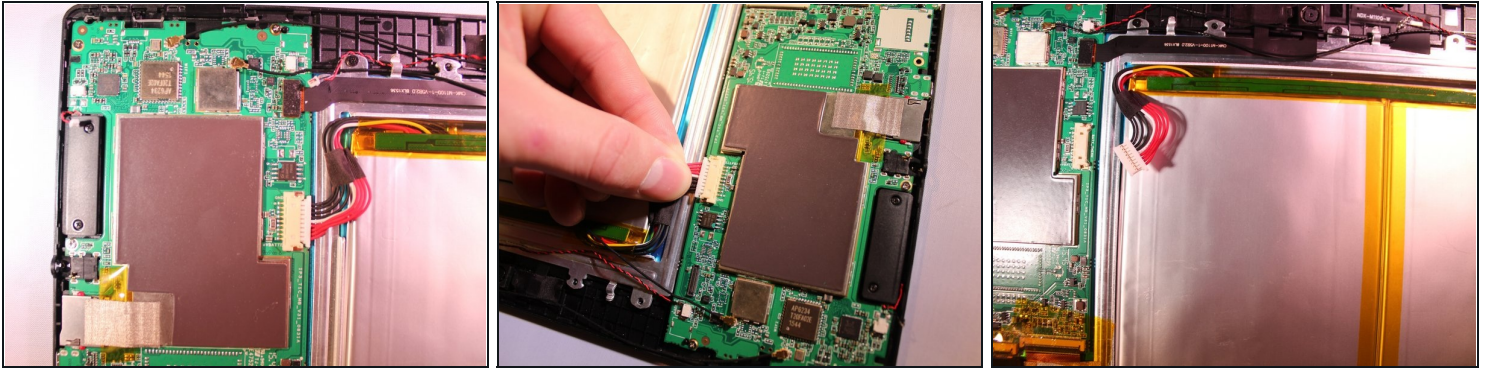
- Remove 2, 6.1 mm Phillips J000 screws from the back of the device.
- ① If any screws are stripped, refer to the [ifixit guide](#) for how to remove a stripped screw.
[How to Remove a Stripped Screw](#)

Step 3



- Using a plastic tool and the [plastic card](#), gently pry off the back cover.

Step 4



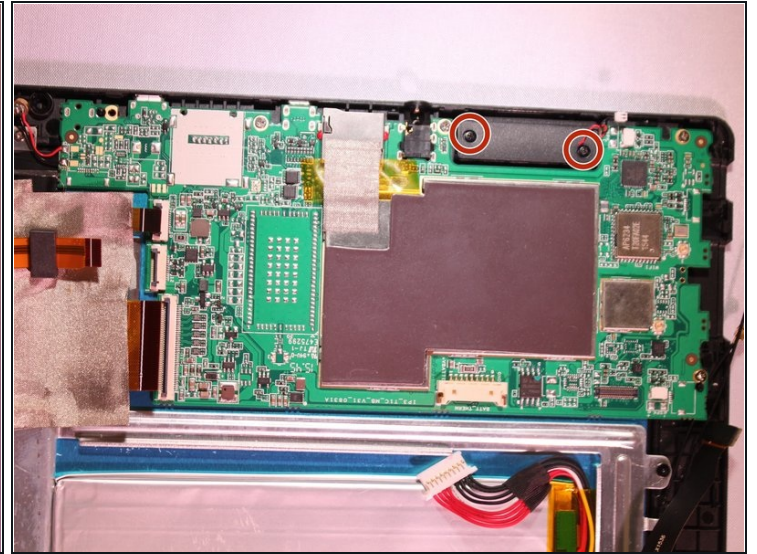
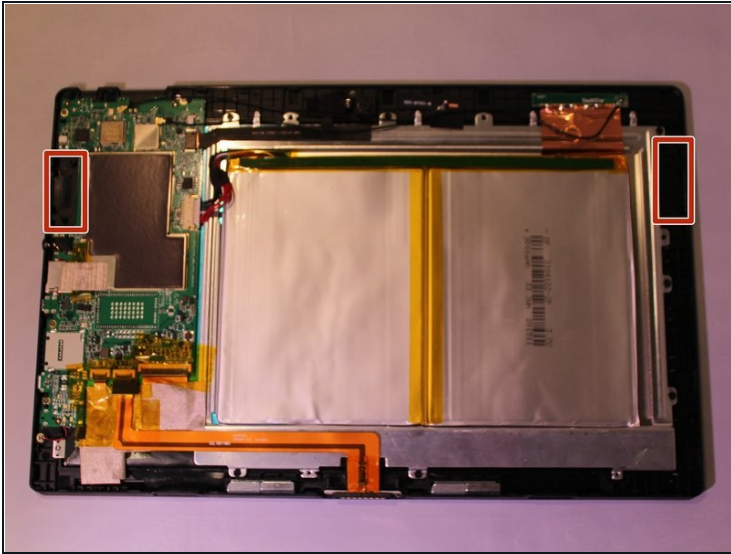
- Using tweezers, remove the electrical connector that connects to the battery to remove the power to the battery.

Step 5 — Speakers



- Remove 2 electrical connectors that connects to the speaker using flat tweezers.

Step 6



- Remove 2 - 6 mm J000 Phillips screws from each of the speakers.

① Speakers will pop out at this point.

To reassemble your device, follow these instructions in reverse order.