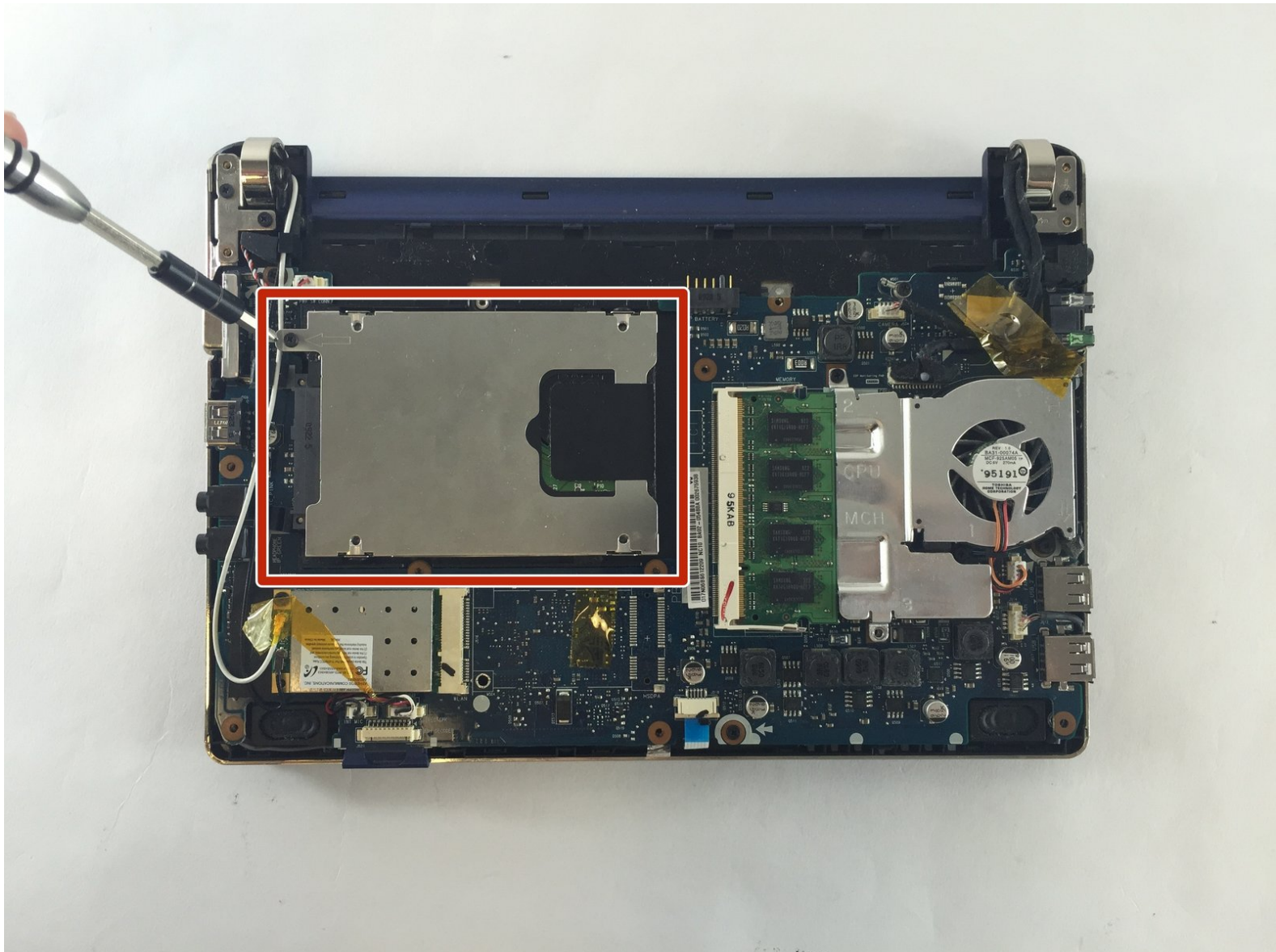




Samsung NP-NC10-KA02US Hard Drive Replacement

You will need to remove the back plate of the...

Written By: Brian Smith



INTRODUCTION

You will need to remove the back plate of the netbook to access the hard drive. This is easily done by following the back removal guide.



TOOLS:

- [iFixit Opening Tool](#) (1)
- [Phillips #1 Screwdriver](#) (1)



PARTS:

- [1 TB SSD](#) (1)
- [250 GB SSD](#) (1)
- [Crucial MX500 500 GB SSD](#) (1)
- [Crucial MX500 2 TB SSD](#) (1)

Step 1 — Battery



- Locate the external battery on the bottom side of the device.
- Locate the tab on the right side of the battery.
- Shift the tab to the left.

Step 2



- Locate the tab on the left side of the device's battery.
- Push the left tab to the right.

Step 3



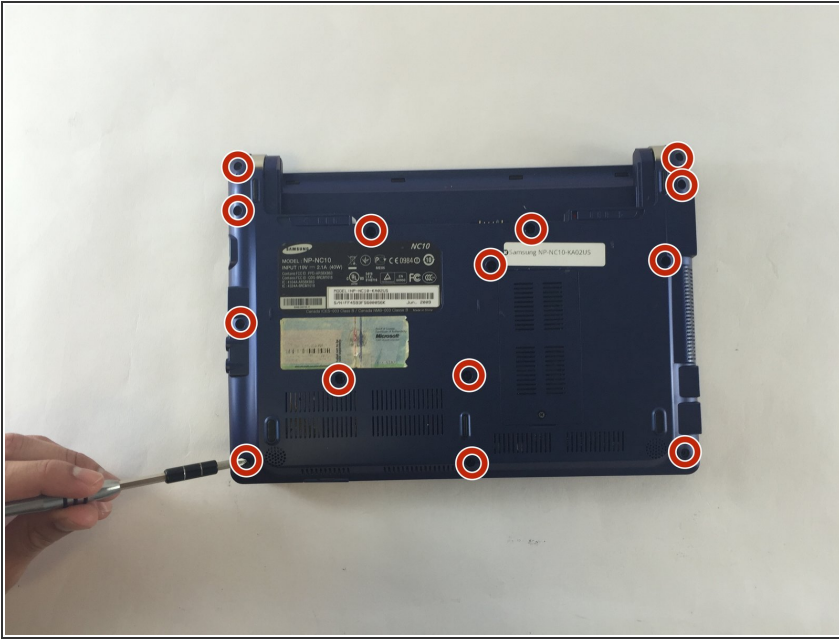
- Pull the battery up from the device.

Step 4 — Back Plate



- Locate the 14, 3.93 mm, screws that need to be removed on the base of the computer.

Step 5



- Remove all 14 of the 3.93 mm screws using a PH1 screw bit.

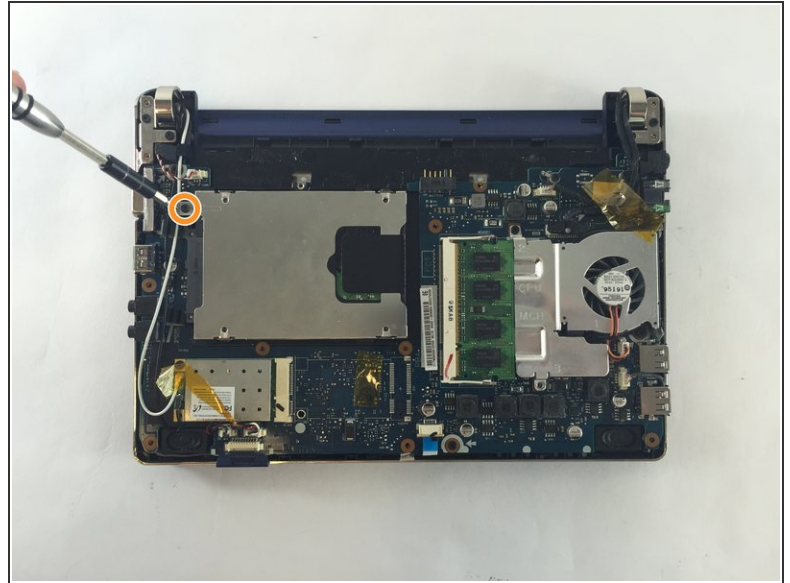
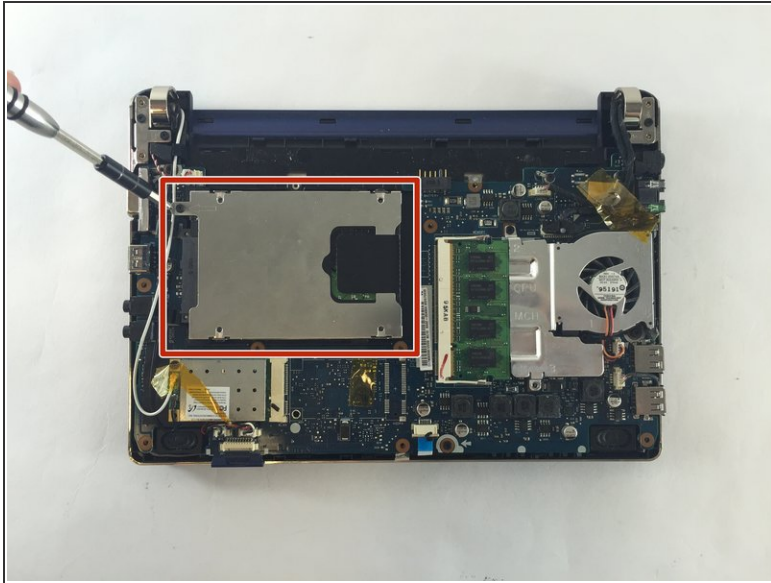
Step 6



- Using two plastic opening tools remove the back plate.
- ⓘ These plastic opening tools have a flat-head that extends as a wedge which are utilized to separate pressure fit plastic components without causing any damage to them.
- The back plate is now removed exposing all of the hardware components.

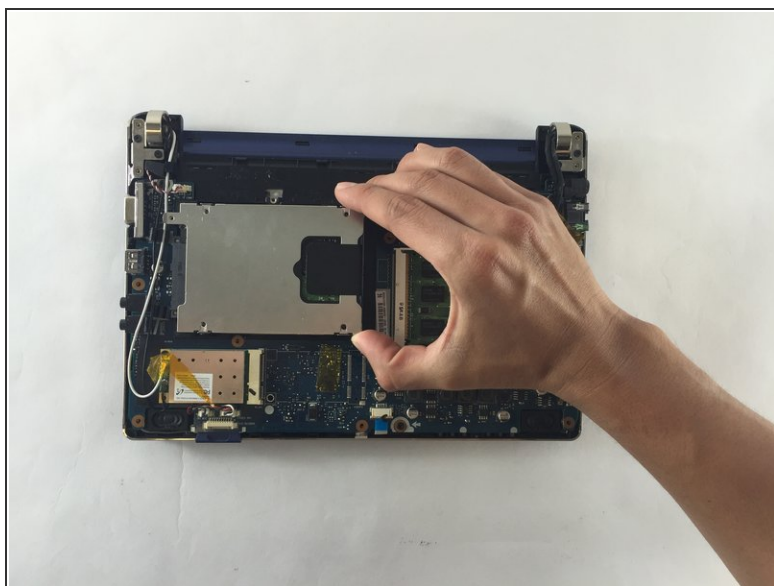
This document was generated on 2022-11-25 06:52:48 AM (MST).

Step 7 — Hard Drive



- Locate the hard drive.
- Remove the one 3.93 mm screw holding the hard drive in place using a PH1 screw bit.

Step 8



- Hold the end of the hard drive farthest from where it is connected to the netbook. Then gently pull in the opposite direction of where the hard drive is connected.
- Your hard drive is now removed.

To reassemble your device, follow these instructions in reverse order.