



# Toshiba Satellite A665-S5170 Hard Drive Replacement

If your computer is slow or freezes frequently, try replacing your old hard drive.

Written By: Chelsea Teague



---

## INTRODUCTION

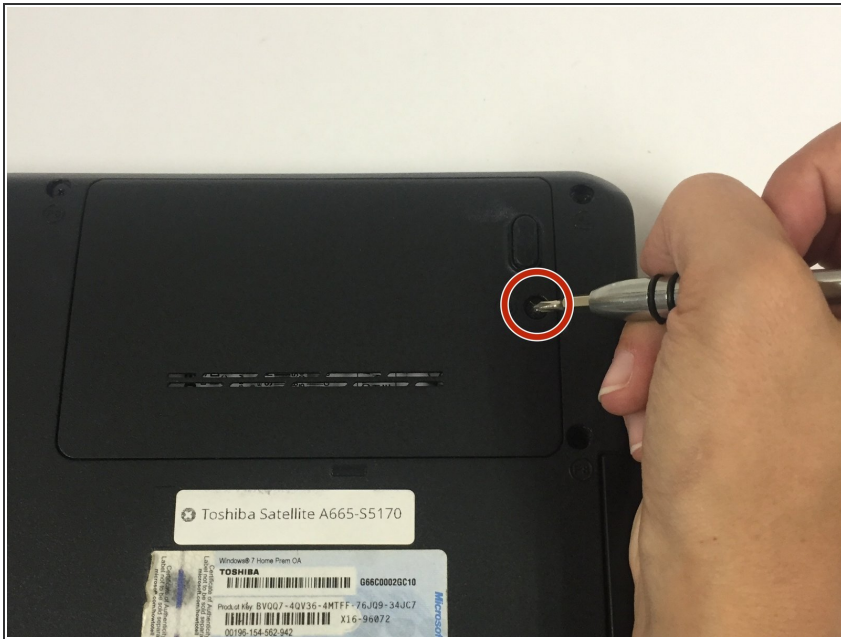
If your computer is slow, freezes frequently, or displays a blue screen upon starting up, you may need to replace your hard drive. To replace your Toshiba Satellite A665-S5170 hard drive, you will need a Phillips head 0 screwdriver. Remember to treat your hard drive gently when removing it from your computer.



### TOOLS:

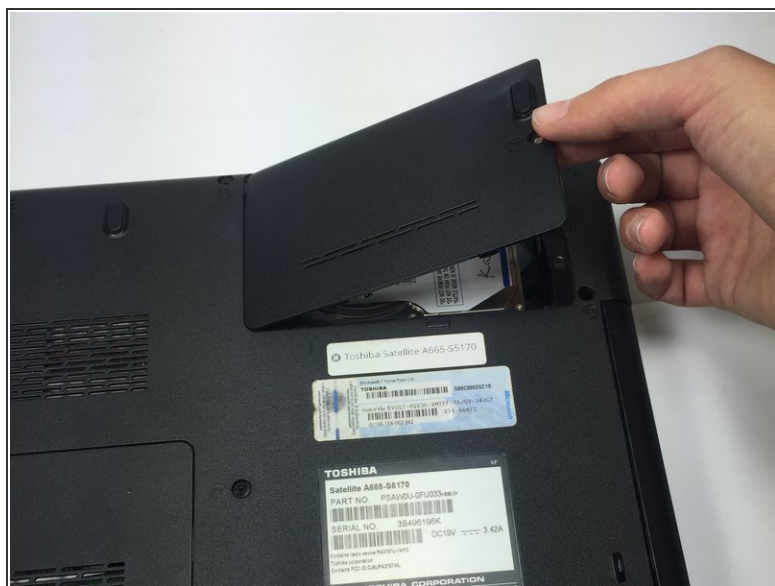
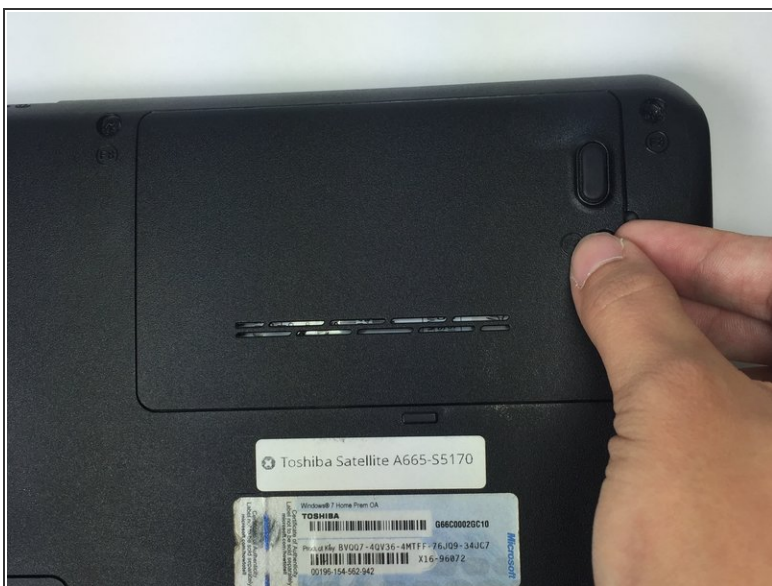
- [Phillips #0 Screwdriver](#) (1)
-

## Step 1 — Hard Drive



- Turn the computer upside down so that the bottom of the laptop is facing up.
- ❗ Position the laptop so that you are able to read the words printed on the labels on the bottom of the laptop from left to right, and so that the laptop's hard drive panel is in the upper right-hand corner of the bottom of the computer.
- Using a Phillip's head 0 screwdriver, remove the 2mm Phillips head screw on the right side of the cover of the hard drive panel by rotating it counter-clockwise.

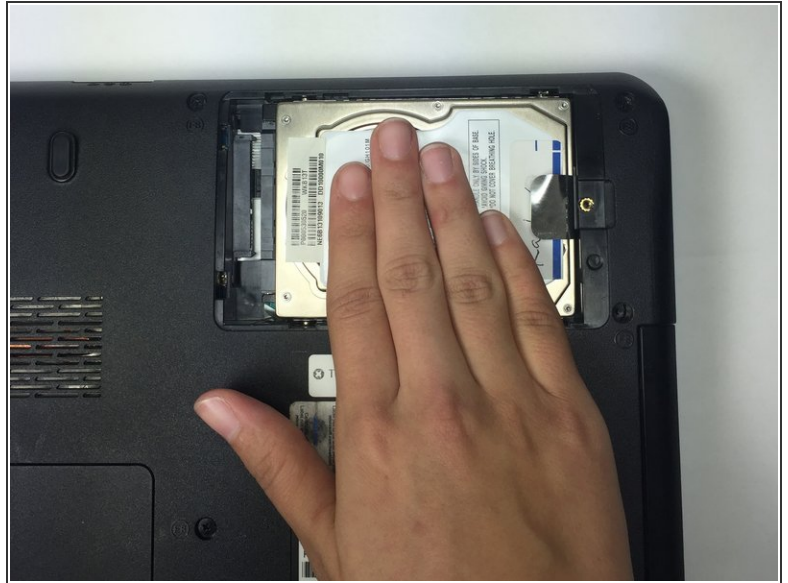
## Step 2



- Insert something thin, such as your nail or a credit card, into the slot on the right side of the cover of the hard drive panel.
- Pull your finger up to pop off the cover of the hard drive panel.



## Step 3



- Gently push down on the hard drive with your hand.
- Still pressing down on the hard drive, move your hand to the right in order to slide the hard drive to the right and to disconnect it from the computer.

## Step 4



- To pull out the hard drive, pinch the plastic tab attached to the right of the hard drive with your thumb and index finger.
- Gently lift the hard drive from the panel by pulling up on the plastic tab.

To reassemble your device, follow these instructions in reverse order.