



# Dell Inspiron M5110 Hard Drive Replacement

Written By: Larain



## TOOLS:

Phillips #0 Screwdriver (1)

iFixit Opening Tool (1)

Tweezers (1)

### Step 1 — Hard Drive



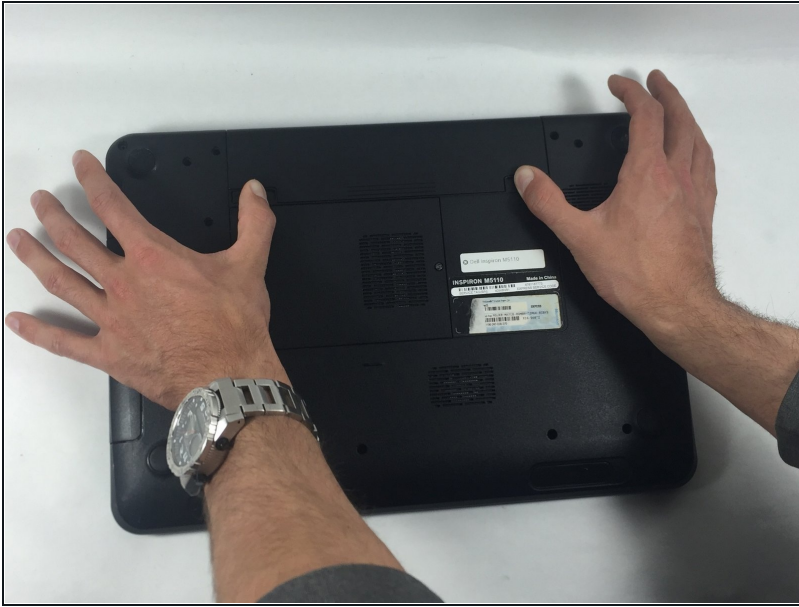
- Shut down the computer and turn it upside down.

### Step 2



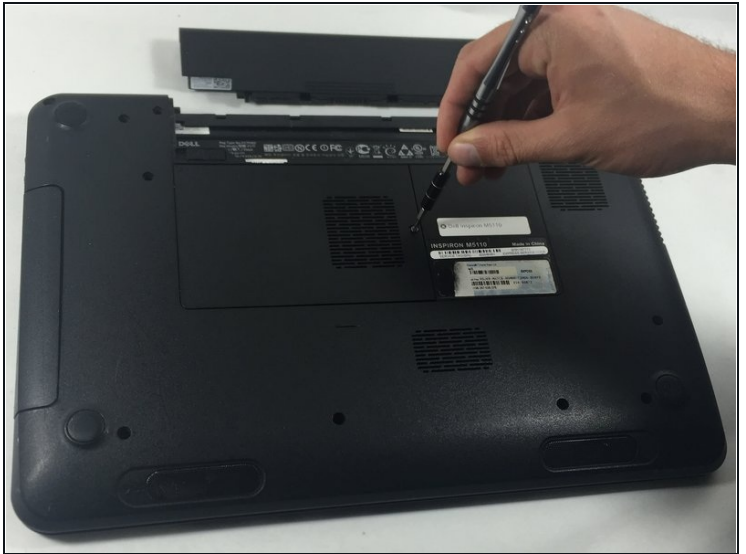
- Slide both of the battery release latches on the bottom of the device in towards the center of the computer.

### Step 3



- Slide and lift the battery up and out from the device.

### Step 4



- Remove the 5 mm Phillips # 0 screw in the middle of the device.

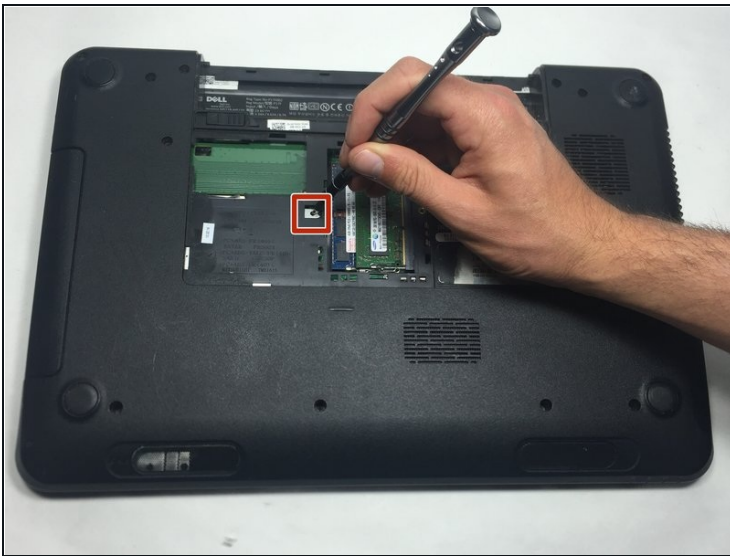


## Step 5



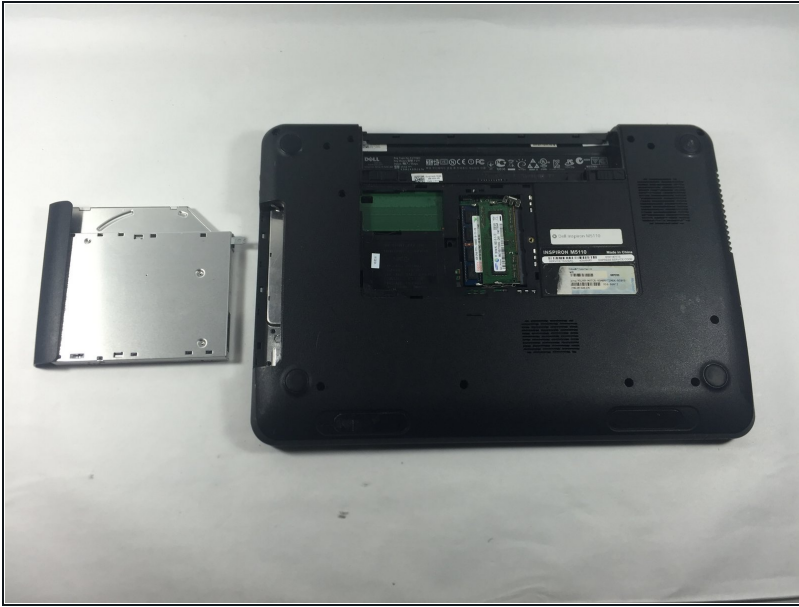
- Remove the module cover pressing in the release tabs and pulling the cover up and away from the base of the device.

## Step 6



- Insert a small screwdriver into the hole and slide the optical drive away from the center of the device. This will slide the optical assembly out from the side of the device.

## Step 7



- Slide the optical drive assembly the rest of the way out of the device.

## Step 8



- Flip the laptop over and open it to reveal the keyboard.
- Open the computer and push the screen back as far as possible.

## Step 9



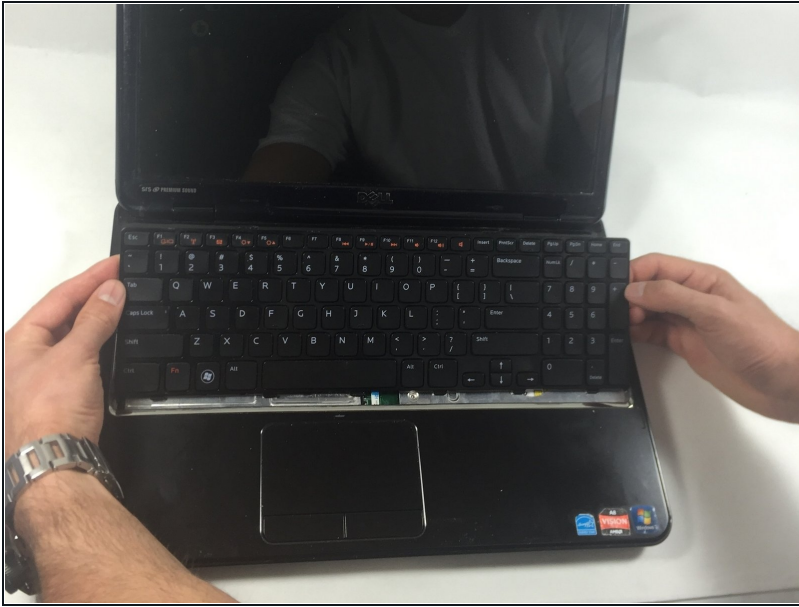
- Slide a plastic opening tool into the slots on the top of the keyboard.

## Step 10



- Pry the keyboard away from the device using the plastic opening tool.

## Step 11



- Lift and slide the keyboard towards the screen to remove the tabs on the keyboard from the slots on the palmrest.

## Step 12



- Flip the keyboard over and place it on the front of the device making sure not to pull out the keyboard cable.



## Step 13



- Lift up the connector latch and remove the keyboard cable. The keyboard is now free from the device.

## Step 14



- Turn the computer over and remove the twelve 5 mm Phillips # 0 screws on the back of the device.

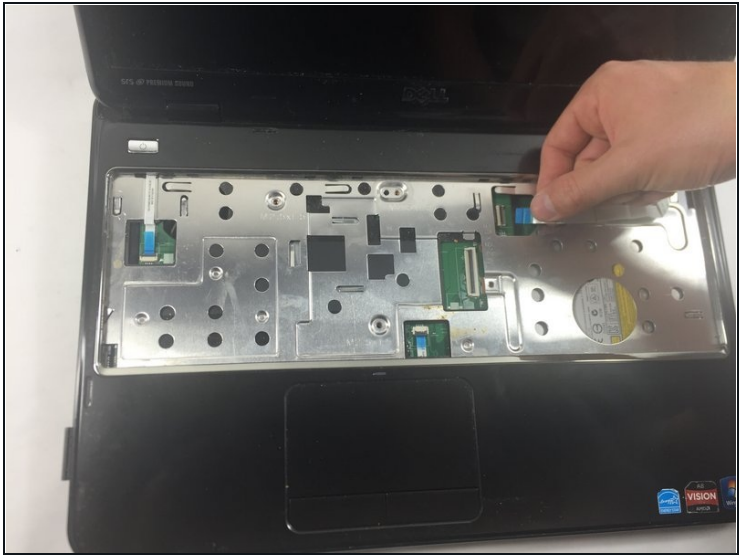
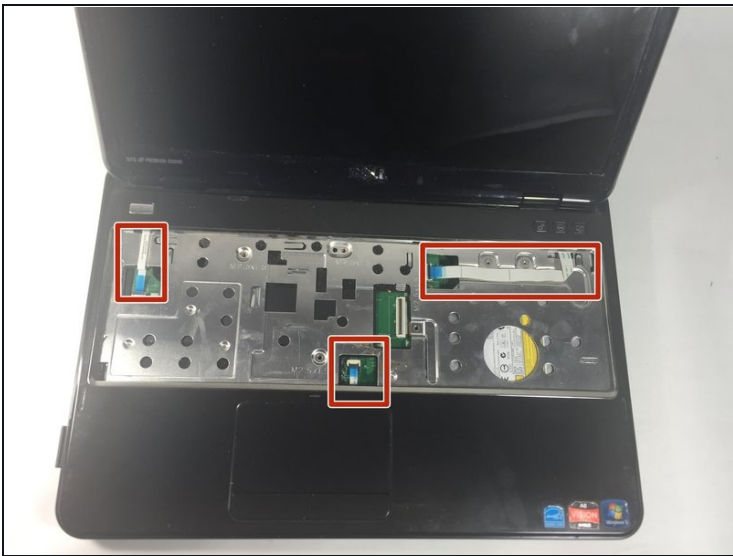


## Step 15



- Turn the computer over and open the display as far as possible and remove the four 5 mm Phillips # 0 screw holding the palmrest in place.

## Step 16



- Disconnect the power button board cable, touch pad cable and the hot key board cable from the connectors.

## Step 17



- Use a plastic opening tool to carefully pry out the palmrest assembly and lift it off the computer base.

## Step 18



- Unscrew the five 5 mm Phillips # 0 screws located in the red circles, found on the system board.

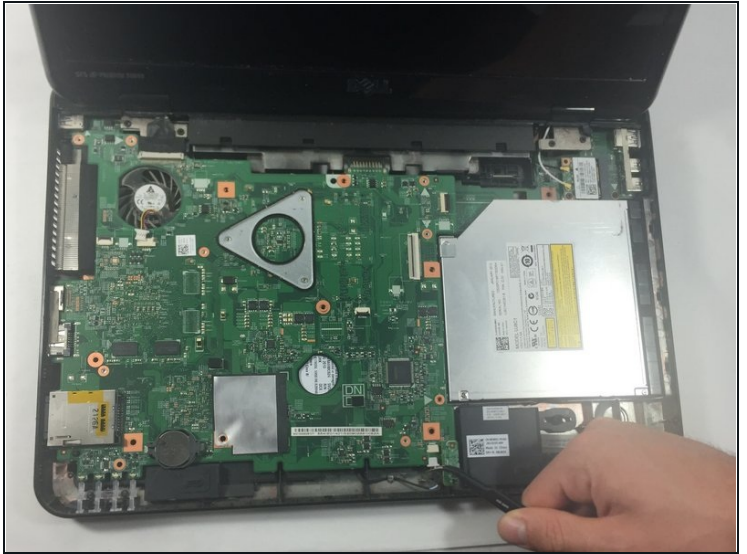
## Step 19



- Unplug the small, green, rectangular Bluetooth receptor chip attached towards the bottom right hand corner of the system board.
- Grasp the chip by placing your forefinger under the chip and thumb on the top, lightly pulling the chip upwards away from the device.



## Step 20



- Unplug the small white cable connected to the speaker in the lower right hand corner of the device.
- ① Use [tweezers](#) to unplug the cable if it is hard to remove by hand or if you cannot grasp it.

## Step 21



- Disconnect the black and white antenna cables from the Mini Card.



## Step 22



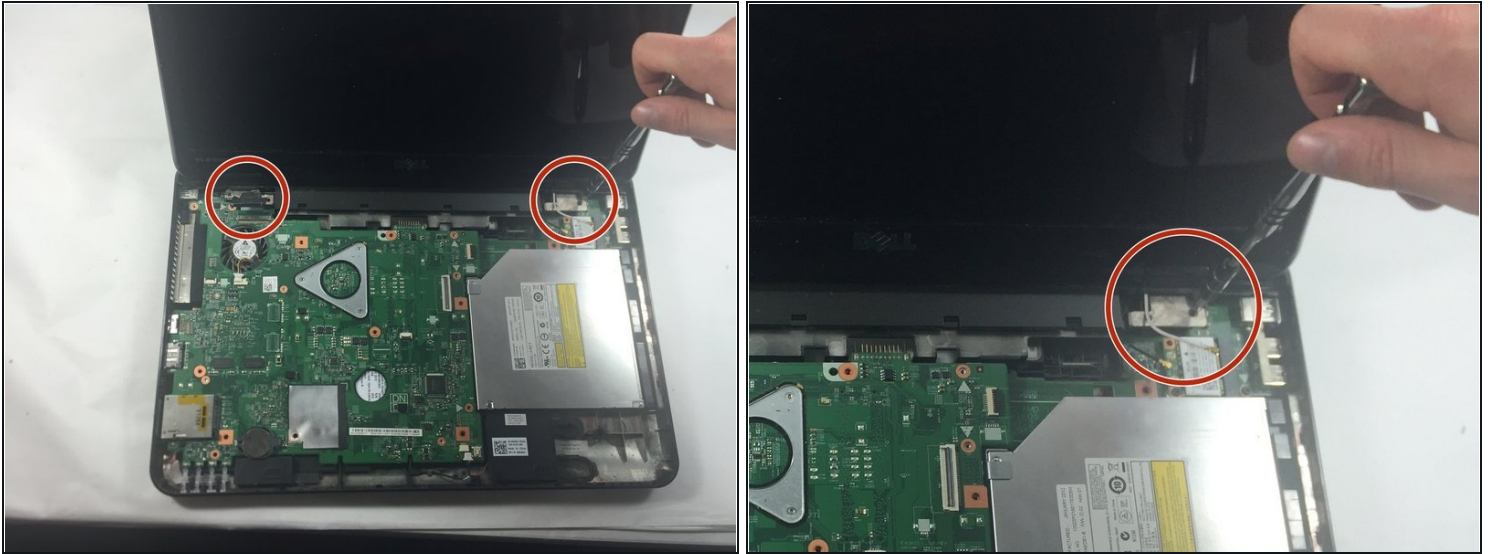
- Unplug the rectangular black LCD cable attached to the system board towards the upper left hand corner.

## Step 23



- Remove the SD card by pressing the SD card slot, on the side of the device, inside the device until you hear a click. Then release your pressure on the slot then gently slide the SD card out.

## Step 24



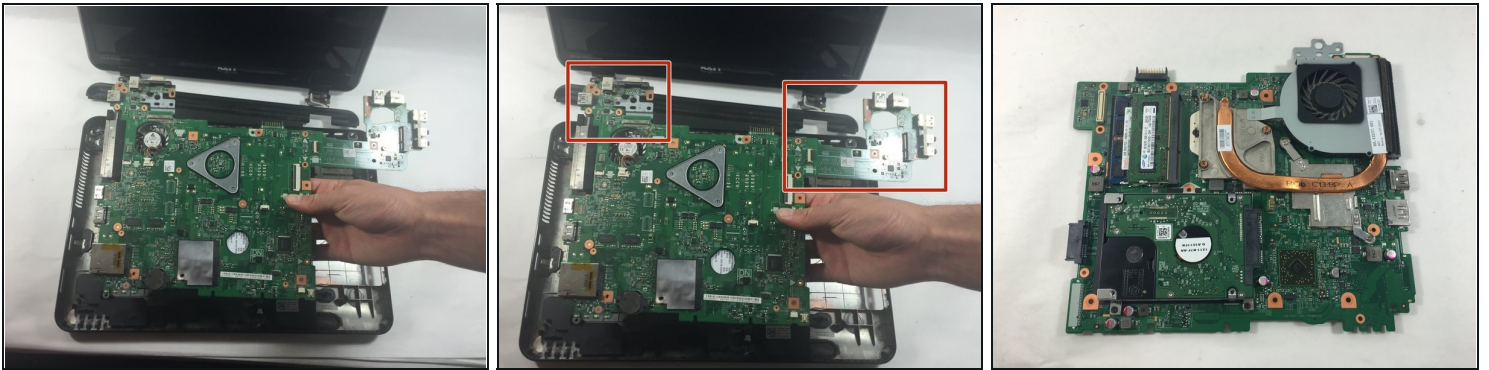
- There are two 5 mm Phillips # 0 screws on each hinge.
- Unscrew the four 5 mm Phillips # 0 screws holding the hinge that keeps the monitor in place.

## Step 25



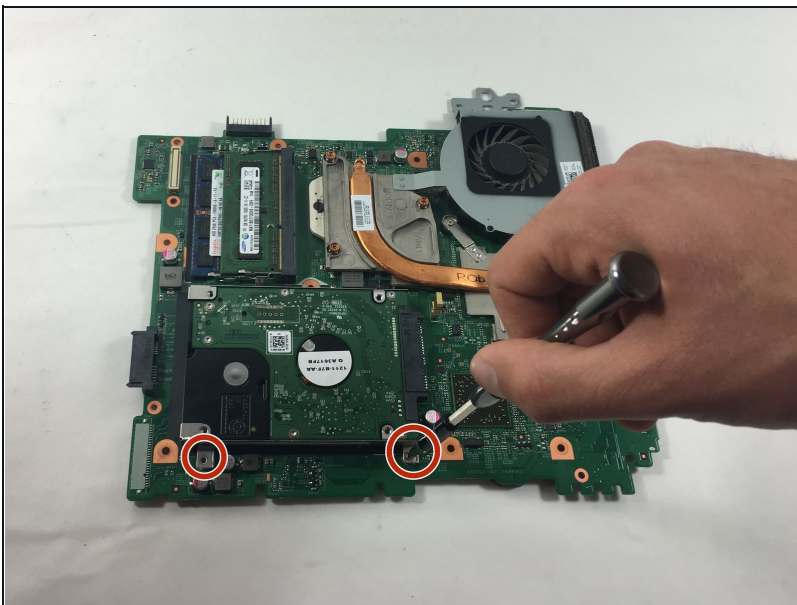
- Remove the monitor carefully.
- Pull up and away on the black hinge cover with moderate force to release from the device.

## Step 26



- Remove the system board from the laptop.
- Disconnect the two minor boards, the VGA/Power Board on the left, and the I/O Board on the right, attached to the system board.
- Flip the system board over revealing the fan compartment and the hard drive.

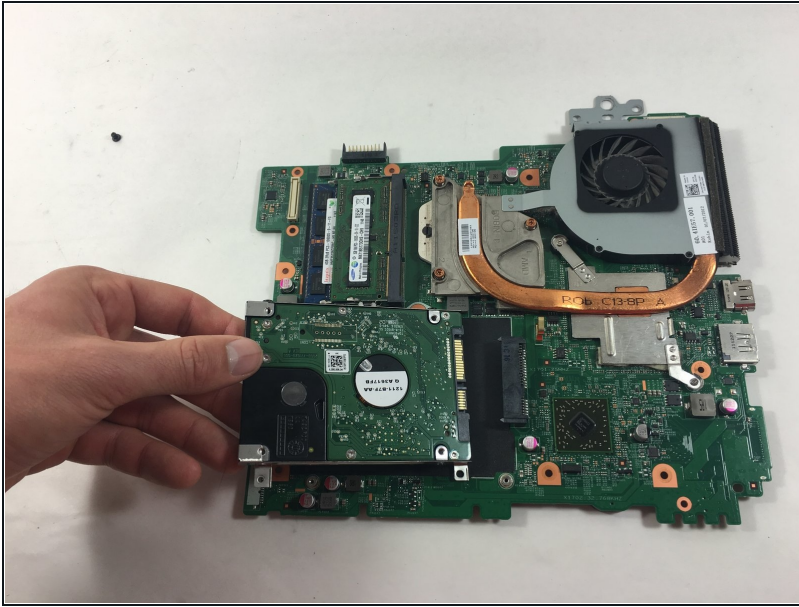
## Step 27



- Remove the two 5 mm Phillips # 0 screws holding in place the hard drive.



## Step 28



- Pull gently on the end of the hard drive that is farthest away from the fan, it will come out easily.

---

To reassemble your device, follow these instructions in reverse order.