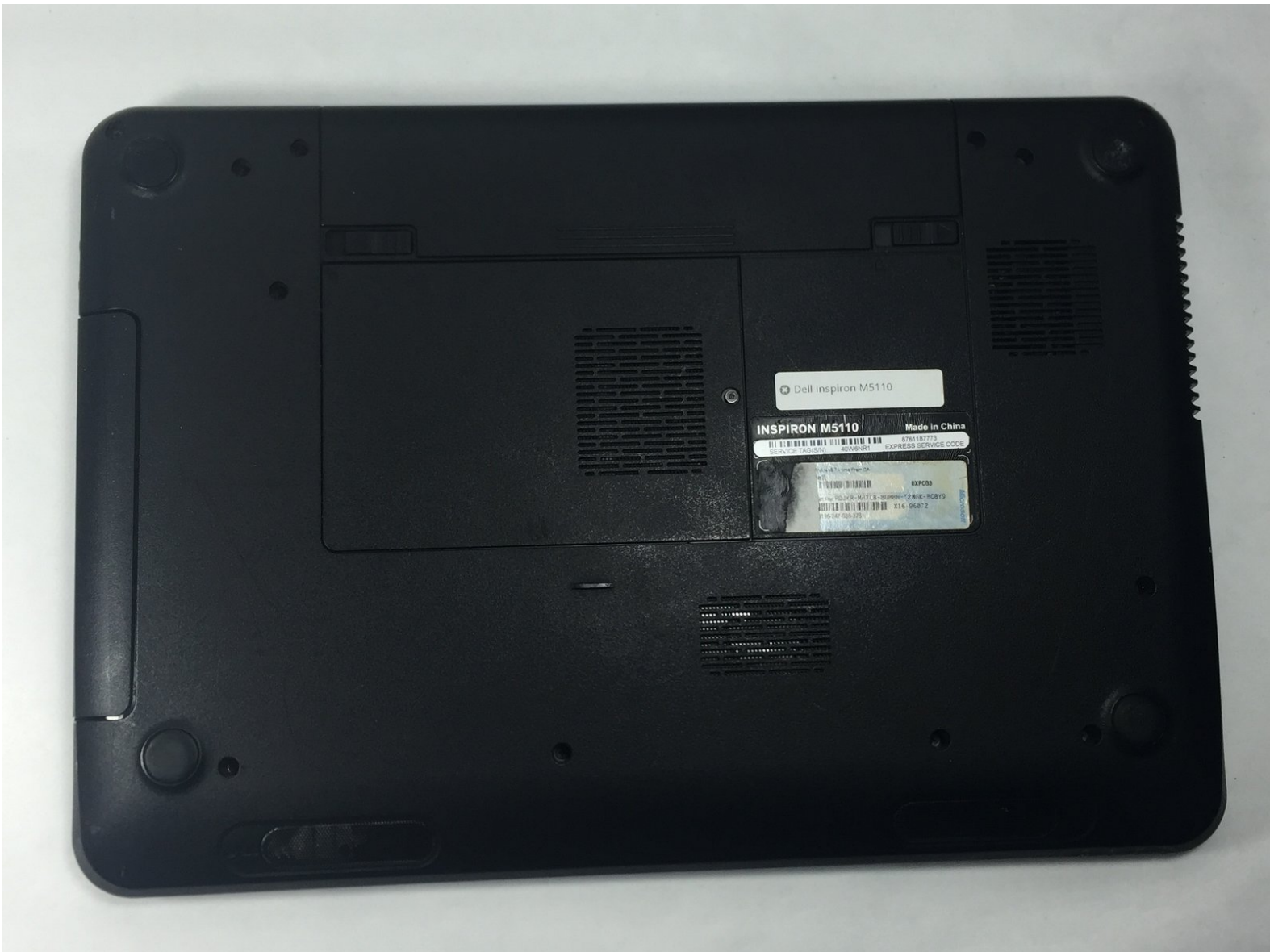




Dell Inspiron M5110 Hard Drive Replacement

An explanation of how to remove and replace the hard drive in the Dell Inspiron M5110.

Written By: Larain





TOOLS:

- [Phillips #0 Screwdriver](#) (1)
- [iFixit Opening Tools](#) (1)
- [Tweezers](#) (1)

Step 1 — Hard Drive



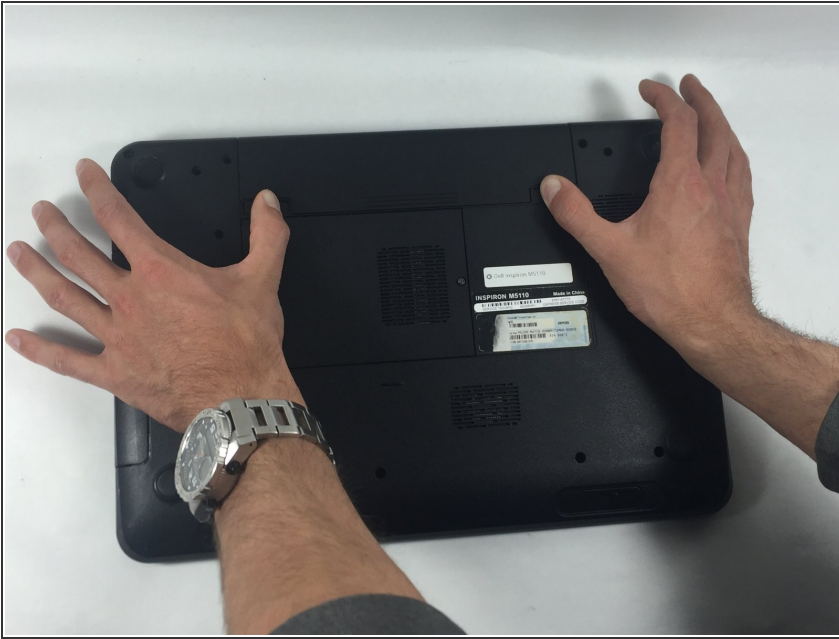
- Shut down the computer and turn it upside down.

Step 2



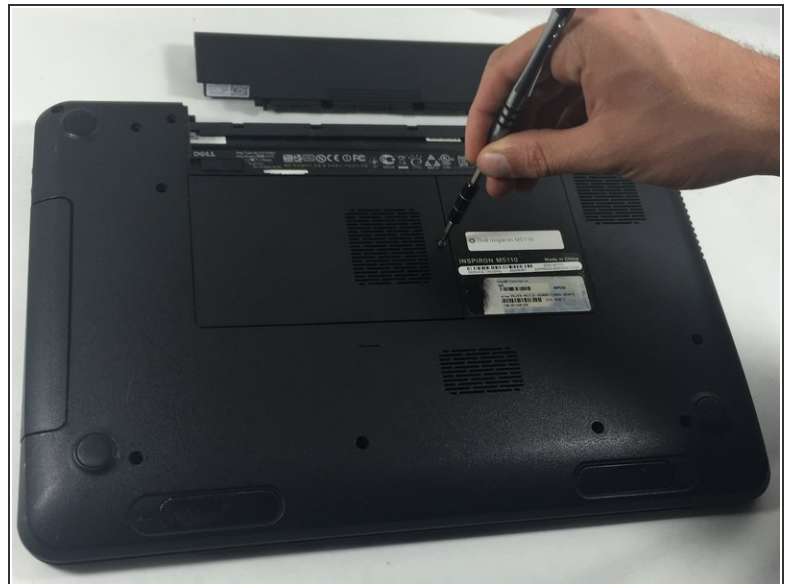
- Slide both of the battery release latches on the bottom of the device in towards the center of the computer.

Step 3



- Slide and lift the battery up and out from the device.

Step 4



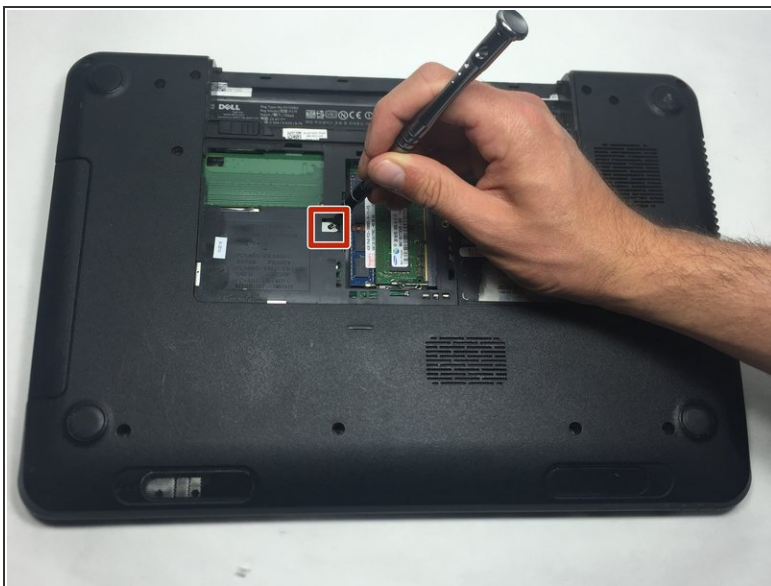
- Remove the 5 mm Phillips # 0 screw in the middle of the device.

Step 5



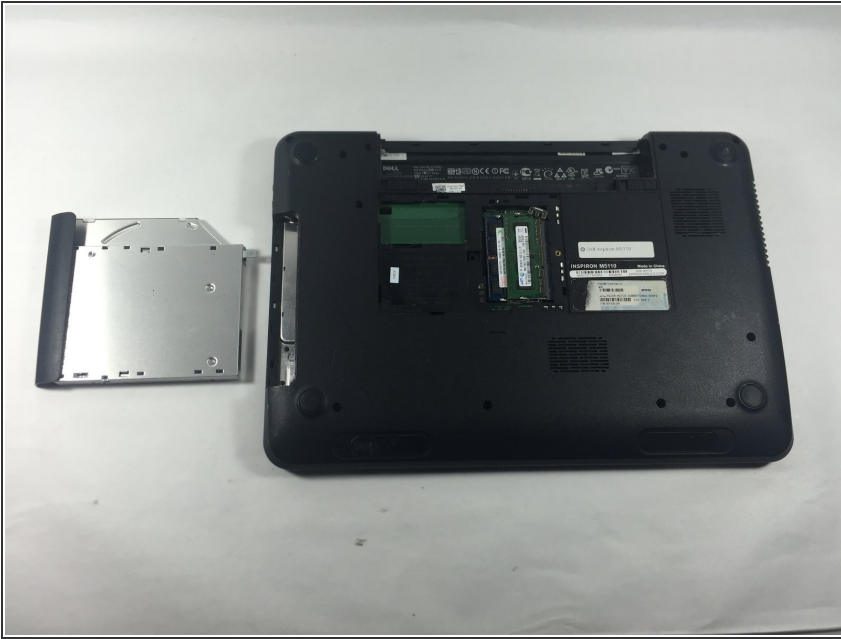
- Remove the module cover pressing in the release tabs and pulling the cover up and away from the base of the device.

Step 6



- Insert a small screwdriver into the hole and slide the optical drive away from the center of the device. This will slide the optical assembly out from the side of the device.

Step 7



- Slide the optical drive assembly the rest of the way out of the device.

Step 8



- Flip the laptop over and open it to reveal the keyboard.
- Open the computer and push the screen back as far as possible.

Step 9



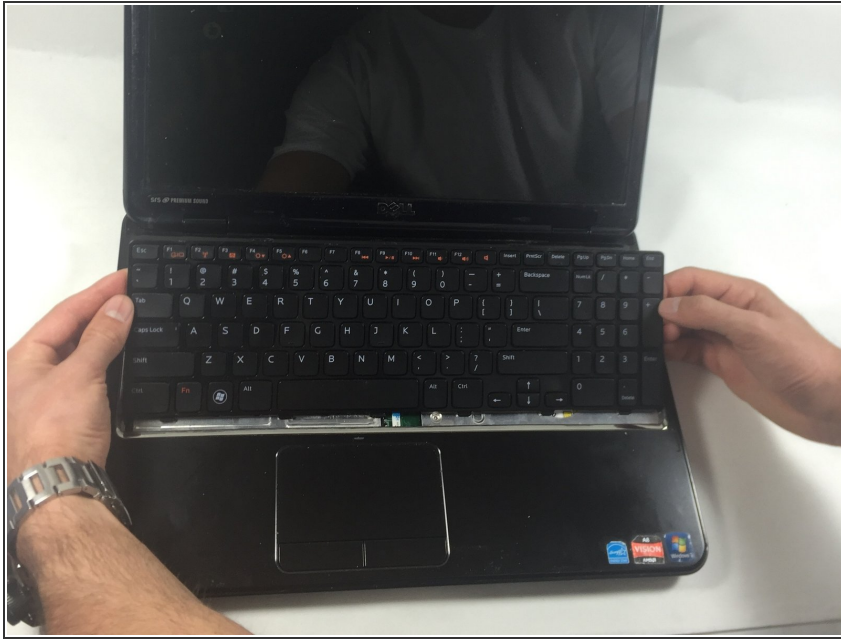
- Slide a plastic opening tool into the slots on the top of the keyboard.

Step 10



- Pry the keyboard away from the device using the plastic opening tool.

Step 11



- Lift and slide the keyboard towards the screen to remove the tabs on the keyboard from the slots on the palmrest.

Step 12



- Flip the keyboard over and place it on the front of the device making sure not to pull out the keyboard cable.

Step 13



- Lift up the connector latch and remove the keyboard cable. The keyboard is now free from the device.

Step 14



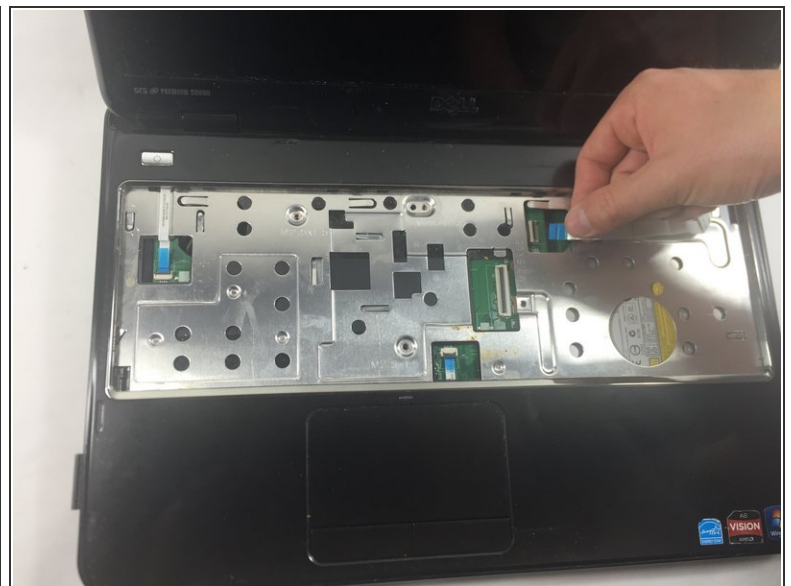
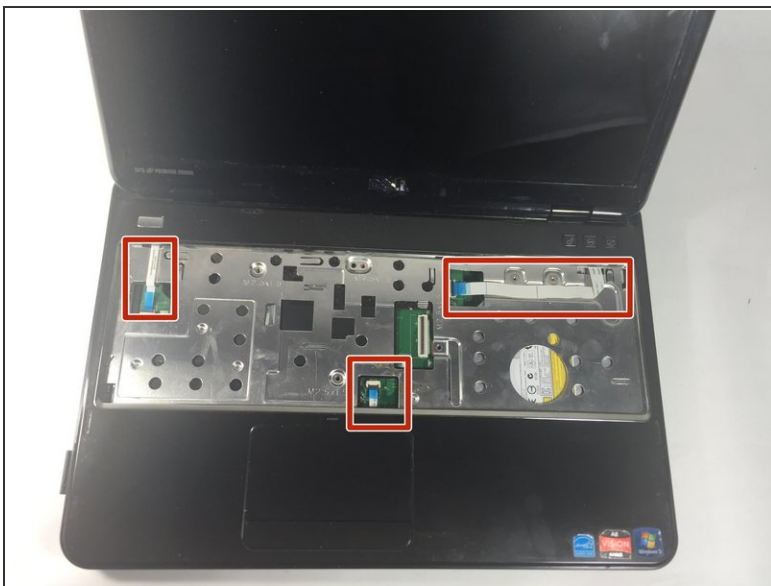
- Turn the computer over and remove the twelve 5 mm Phillips # 0 screws on the back of the device.

Step 15



- Turn the computer over and open the display as far as possible and remove the four 5 mm Phillips # 0 screw holding the palmrest in place.

Step 16



- Disconnect the power button board cable, touch pad cable and the hot key board cable from the connectors.

Step 17



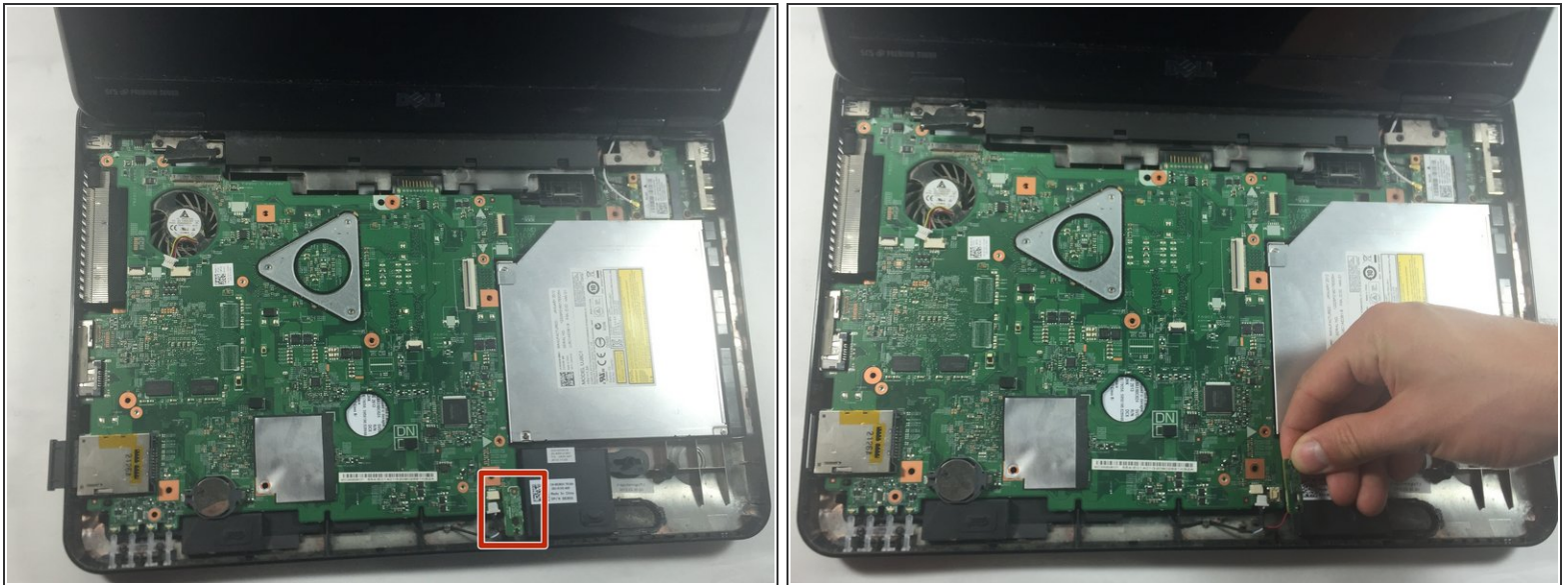
- Use a plastic opening tool to carefully pry out the palmrest assembly and lift it off the computer base.

Step 18



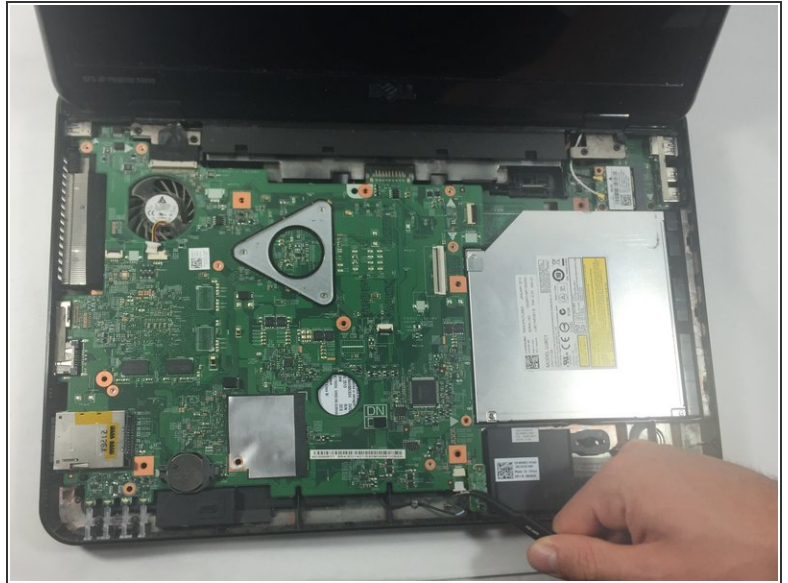
- Unscrew the five 5 mm Phillips # 0 screws located in the red circles, found on the system board.

Step 19



- Unplug the small, green, rectangular Bluetooth receptor chip attached towards the bottom right hand corner of the system board.
- Grasp the chip by placing your forefinger under the chip and thumb on the top, lightly pulling the chip upwards away from the device.

Step 20



- Unplug the small white cable connected to the speaker in the lower right hand corner of the device.
- ⓘ Use tweezers to unplug the cable if it is hard to remove by hand or if you cannot grasp it.

Step 21



- Disconnect the black and white antenna cables from the Mini Card.

Step 22



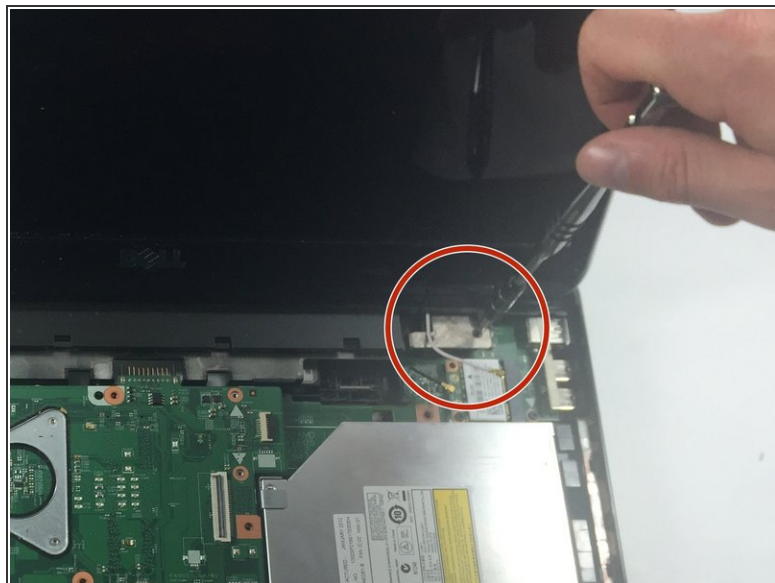
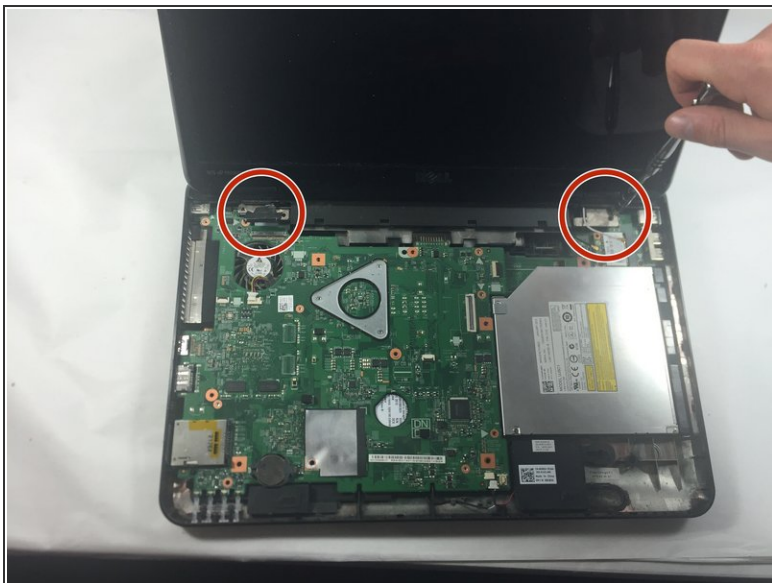
- Unplug the rectangular black LCD cable attached to the system board towards the upper left hand corner.

Step 23



- Remove the SD card by pressing the SD card slot, on the side of the device, inside the device until you hear a click. Then release your pressure on the slot then gently slide the SD card out.

Step 24



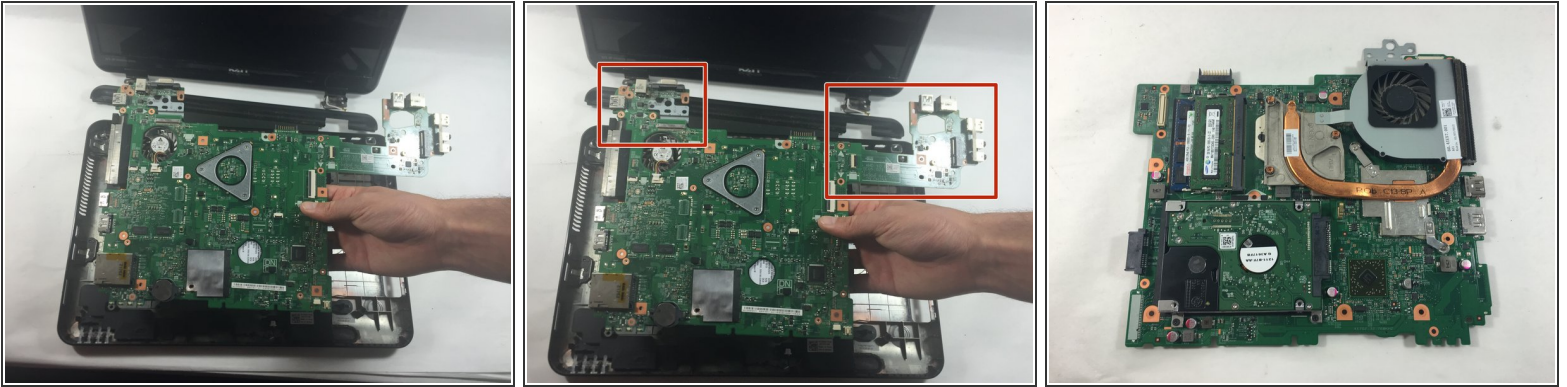
- There are two 5 mm Phillips # 0 screws on each hinge.
- Unscrew the four 5 mm Phillips # 0 screws holding the hinge that keeps the monitor in place.

Step 25



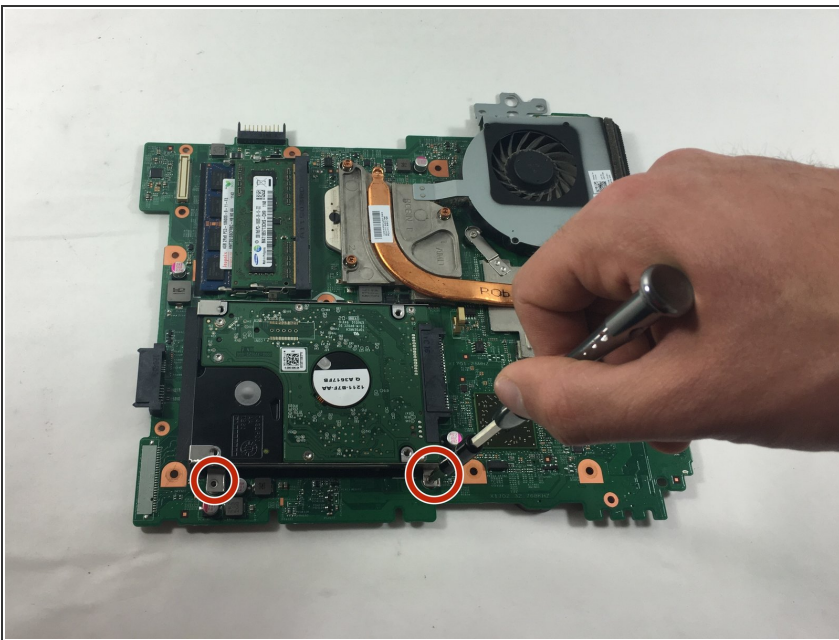
- Remove the monitor carefully.
- Pull up and away on the black hinge cover with moderate force to release from the device.

Step 26



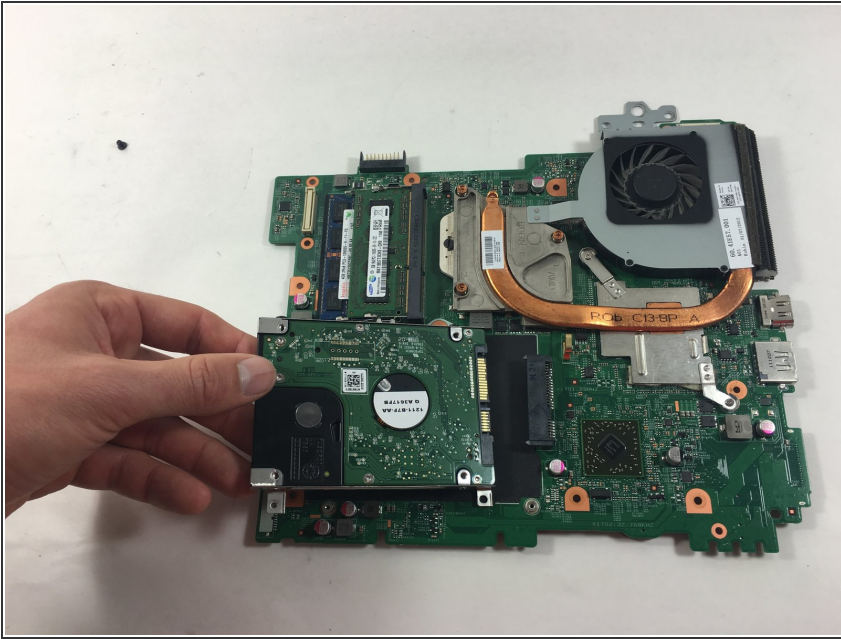
- Remove the system board from the laptop.
- Disconnect the two minor boards, the VGA/Power Board on the left, and the I/O Board on the right, attached to the system board.
- Flip the system board over revealing the fan compartment and the hard drive.

Step 27



- Remove the two 5 mm Phillips # 0 screws holding in place the hard drive.

Step 28



- Pull gently on the end of the hard drive that is farthest away from the fan, it will come out easily.

To reassemble your device, follow these instructions in reverse order.