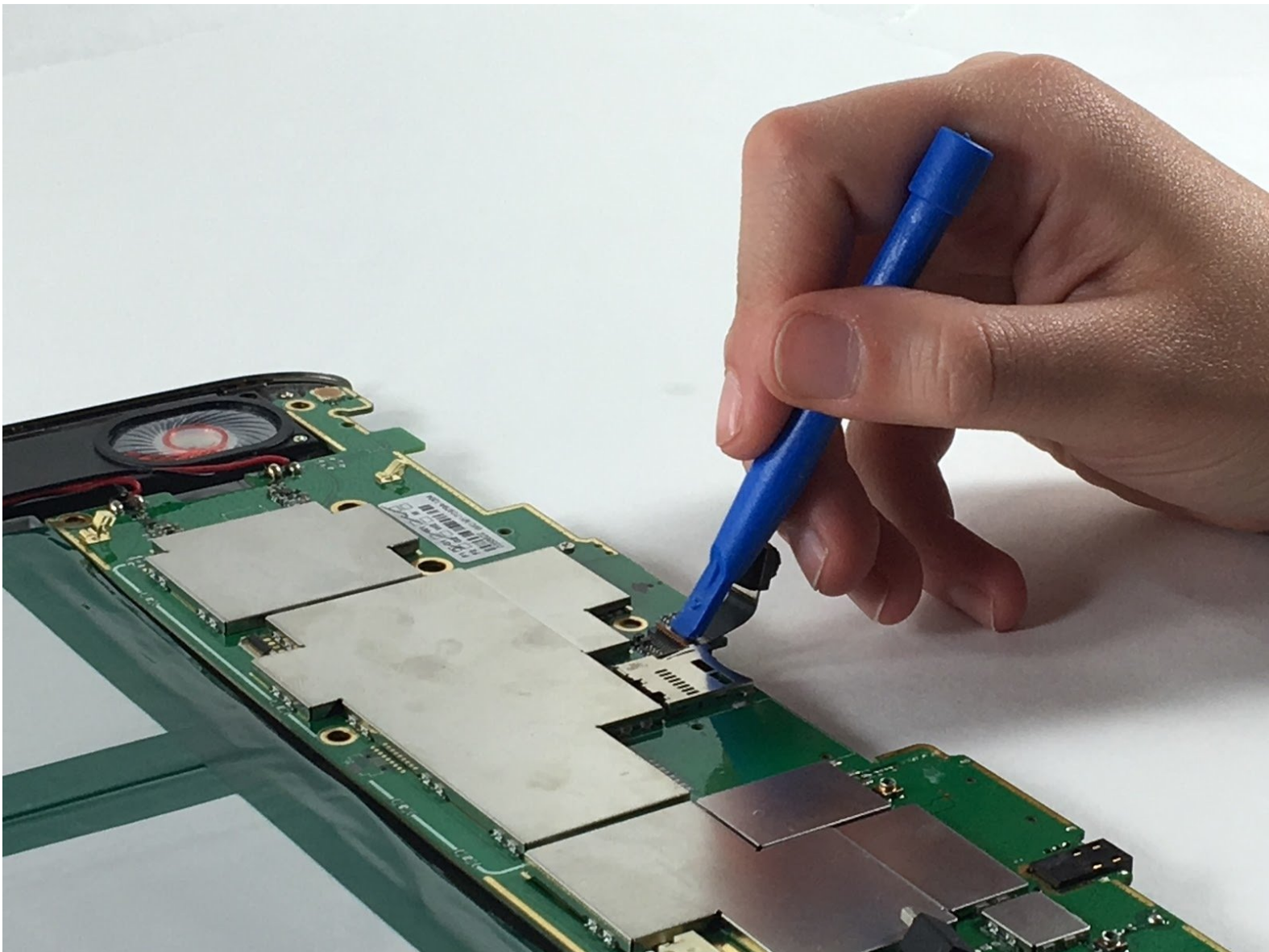




# Le Pan II Camera Replacement

If a camera is cracked or broken, it may need to be replaced.

Written By: Kelly Moniz



---

# INTRODUCTION

In this guide, you will be shown step-by-step how to replace your broken Le Pan II camera.

---



## TOOLS:

- [Metal Spudger](#) (1)
- [iFixit Opening Tools](#) (1)

*Optional*

---

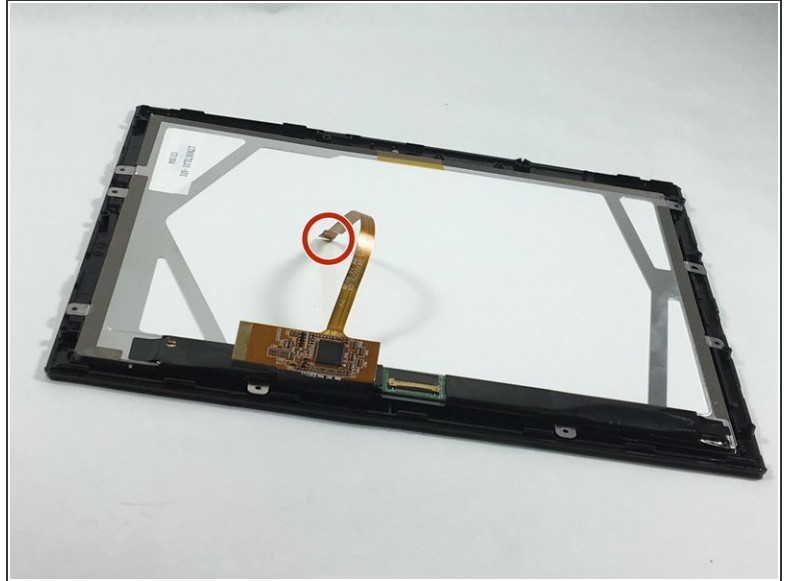
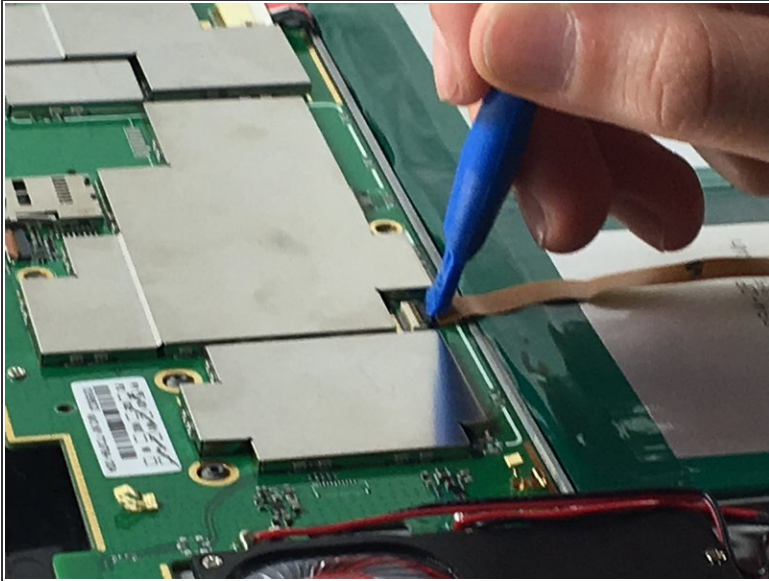
## Step 1 — Screen



- Insert metal spudger between front and back panel to pry apart.
- Continue to pry while moving the metal spudger along the crevice to completely separate two panels.

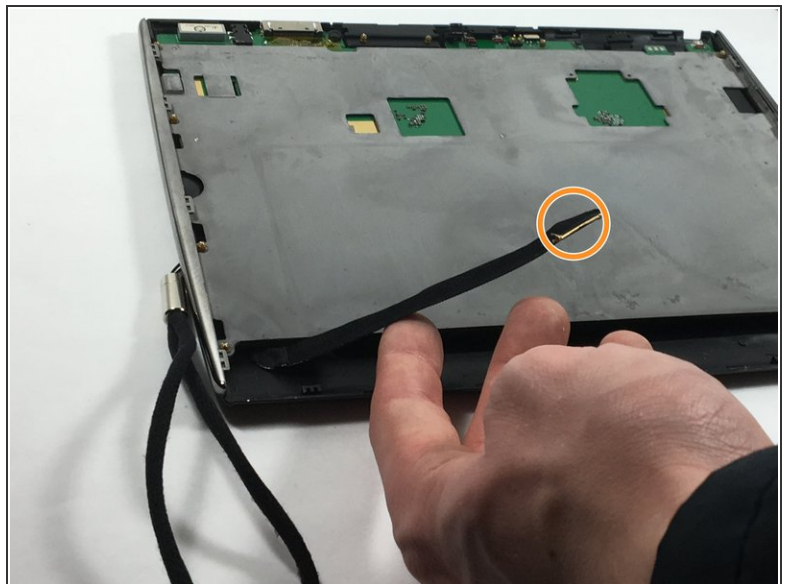
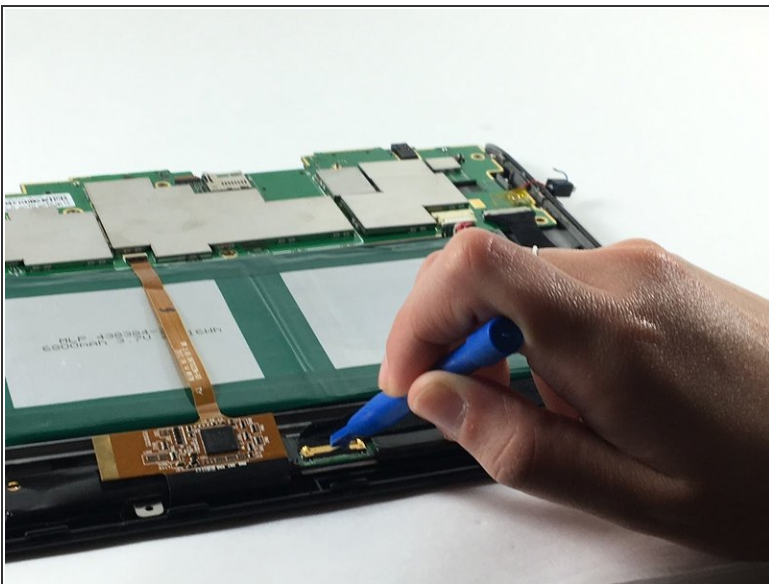
⚠ Avoid using metal when opening devices, as it can damage or crack the screen.

## Step 2



- Use the plastic opening tool to disconnect the flat ribbon cable from the motherboard connector.
- Disconnect the flat ribbon by gently pulling it out from its connecting port.

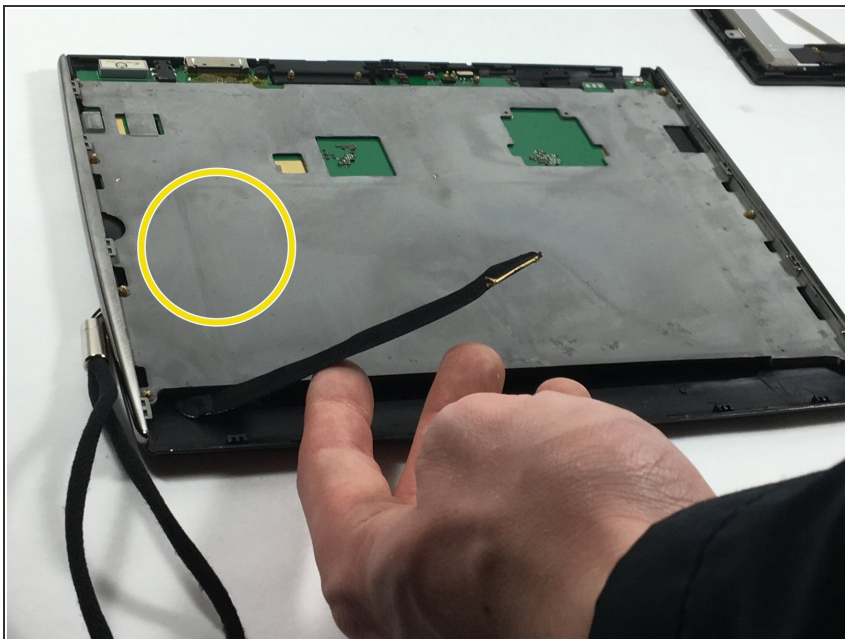
## Step 3



- Use the plastic opening tool to disconnect the display cable from its motherboard connector.
- Disconnect the display cable by gently pulling it out from its connecting port.



## Step 4



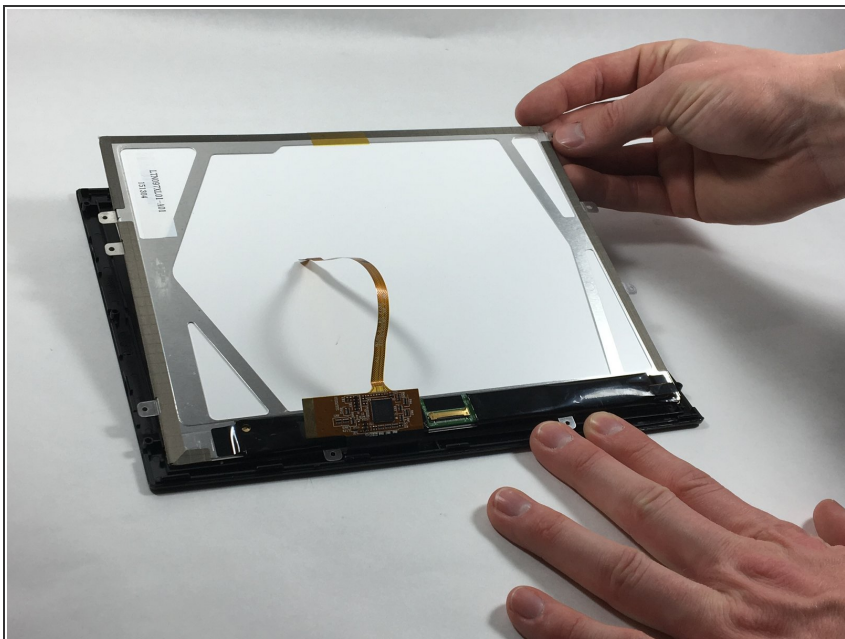
- Remove grey metal backing from screen.

## Step 5



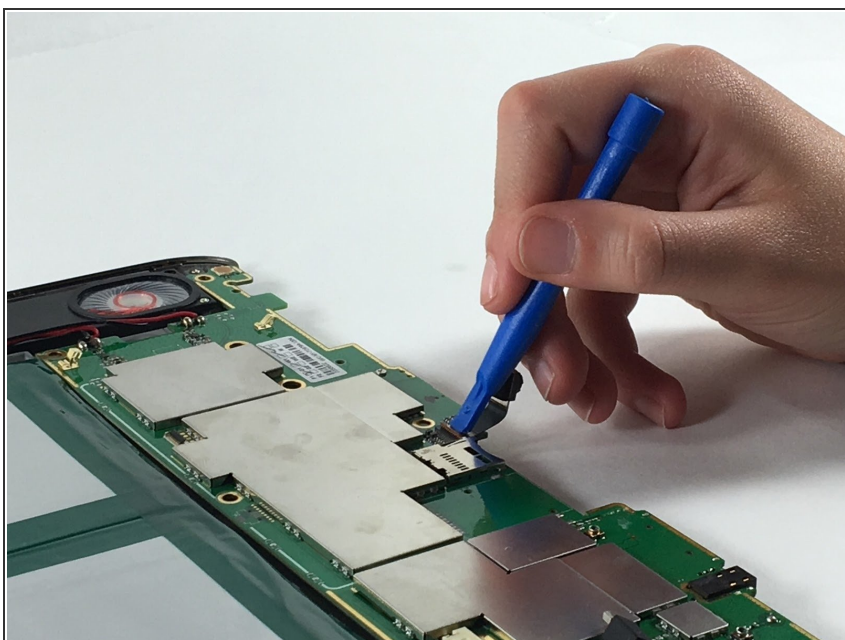
- Flip the tablet so the screen is facing upward, and use the metal spudger to pry apart the screen from the side pieces.

## Step 6



- Lift and carefully remove the LCD display from the front cover.

## Step 7 — Camera



- Use the plastic opening tool to lift the connector up and remove the camera.

To reassemble your device, follow these instructions in reverse order.