



Samsung NP-N210-JA02US Wireless Card Replacement

Replace the Wireless Card in your Samsung NP-N210-JA02US.

Written By: Afif Chehabaldeen



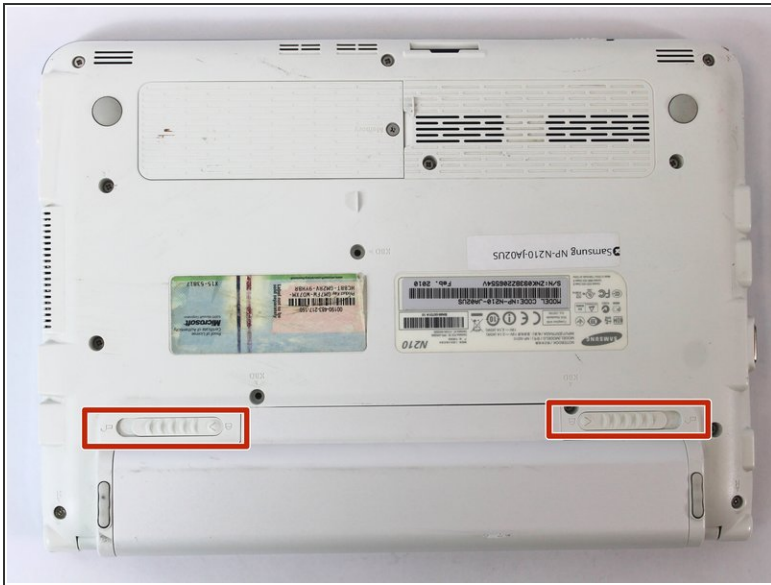
INTRODUCTION

If you encounter issues while connecting to wireless internet connections, replacing your wireless card may enable you to access the internet.

TOOLS:

- [Phillips 001 Screwdriver](#) (1)
 - [Phillips #1 Screwdriver](#) (1)
 - [Tweezers](#) (1)
 - [Heavy-Duty Spudger](#) (1)
-

Step 1 — Battery



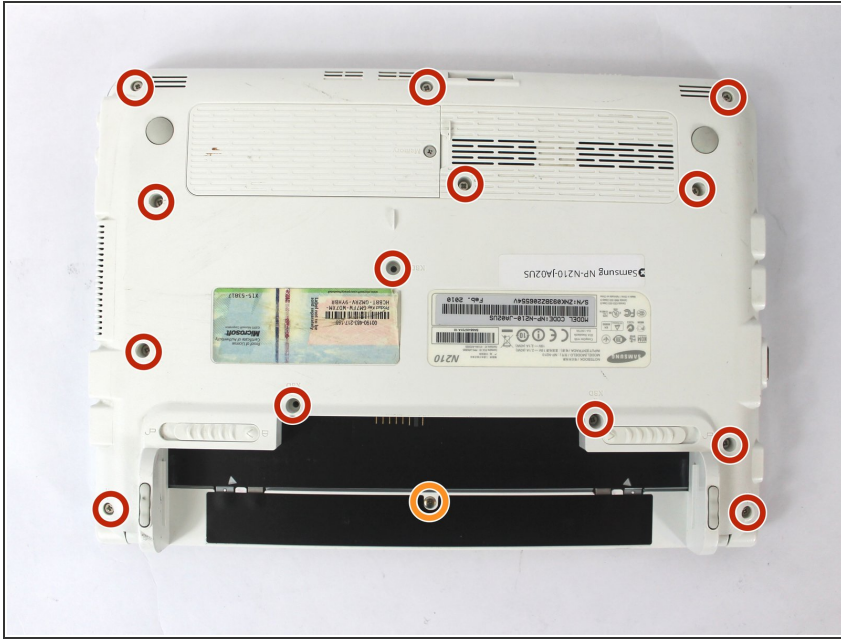
- Carefully slide both locking pins to the unlocked position.

Step 2



- Slide the battery out of its housing.

Step 3 — Battery Removal



- Remove the following 14 screws:
- Thirteen 5 mm Phillips #1 screws
- One 3.5 mm Phillips #001 screw

Step 4



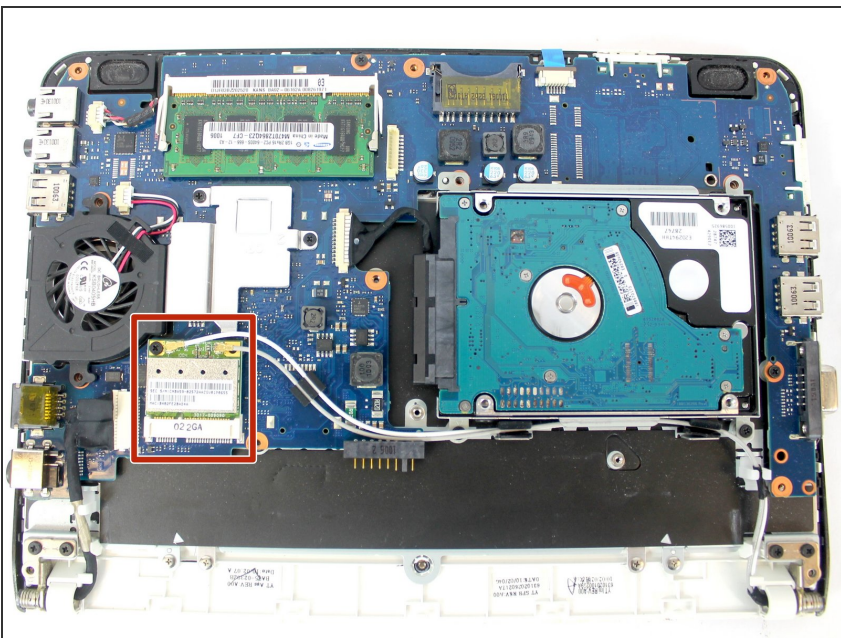
- Carefully insert the plastic opening tool in the seam between the lower casing and the chrome bezel.

Step 5



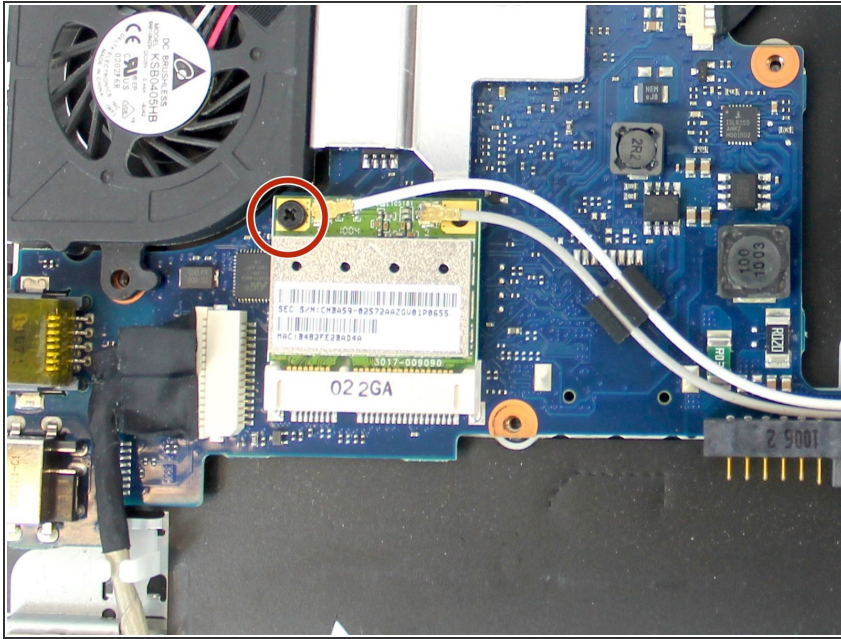
- Slide the opening tool across all sides of the lower case, and lift it up to remove the case and reveal the internal components.

Step 6



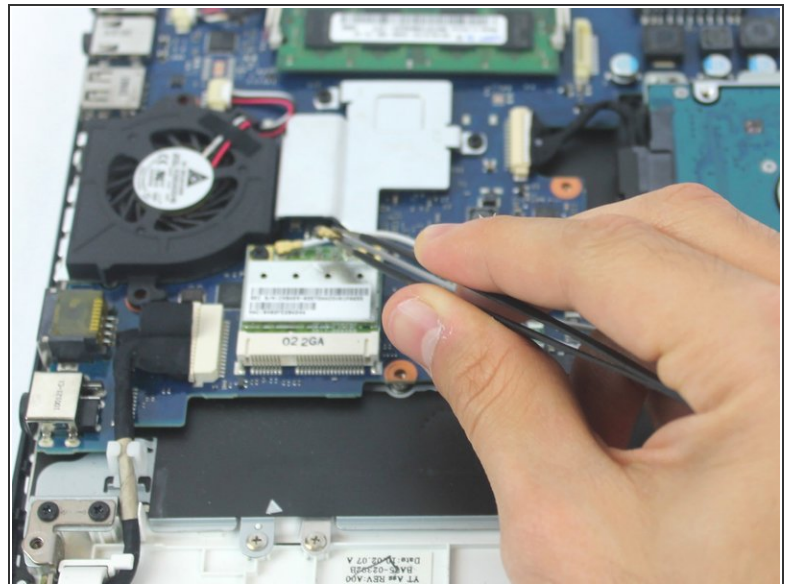
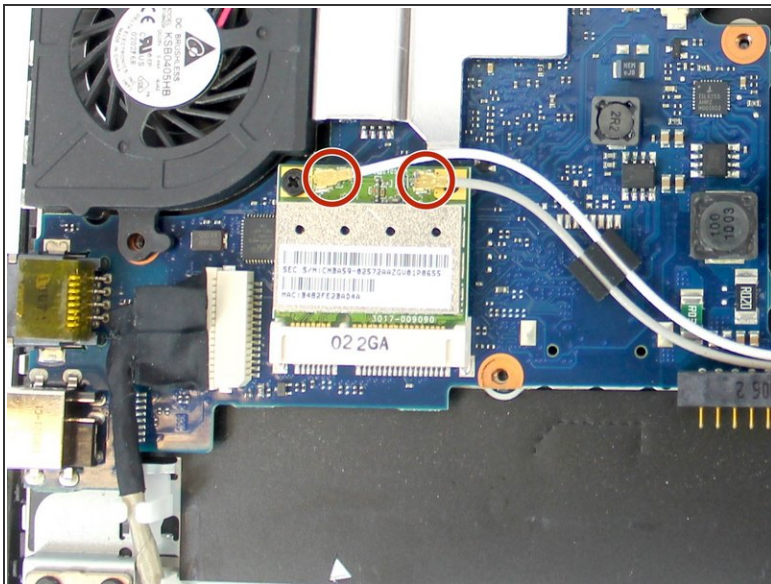
- Locate the wireless card.

Step 7



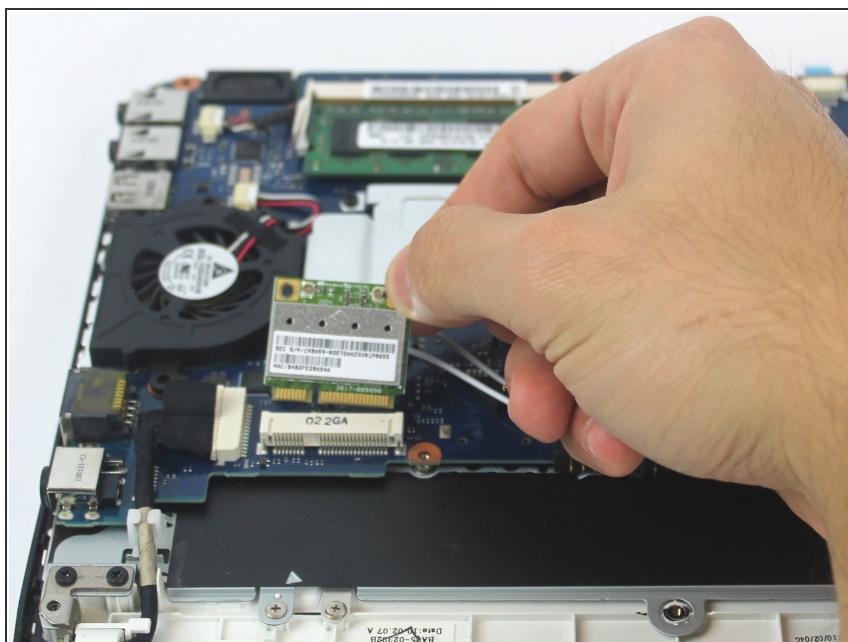
- Remove the 3.5 mm Philips #1 screw.

Step 8



- Carefully with tweezers, lift both connectors to disconnect them from the wireless card.

Step 9



- Gently remove the wireless card from its socket.

To reassemble your device, follow these instructions in reverse order.