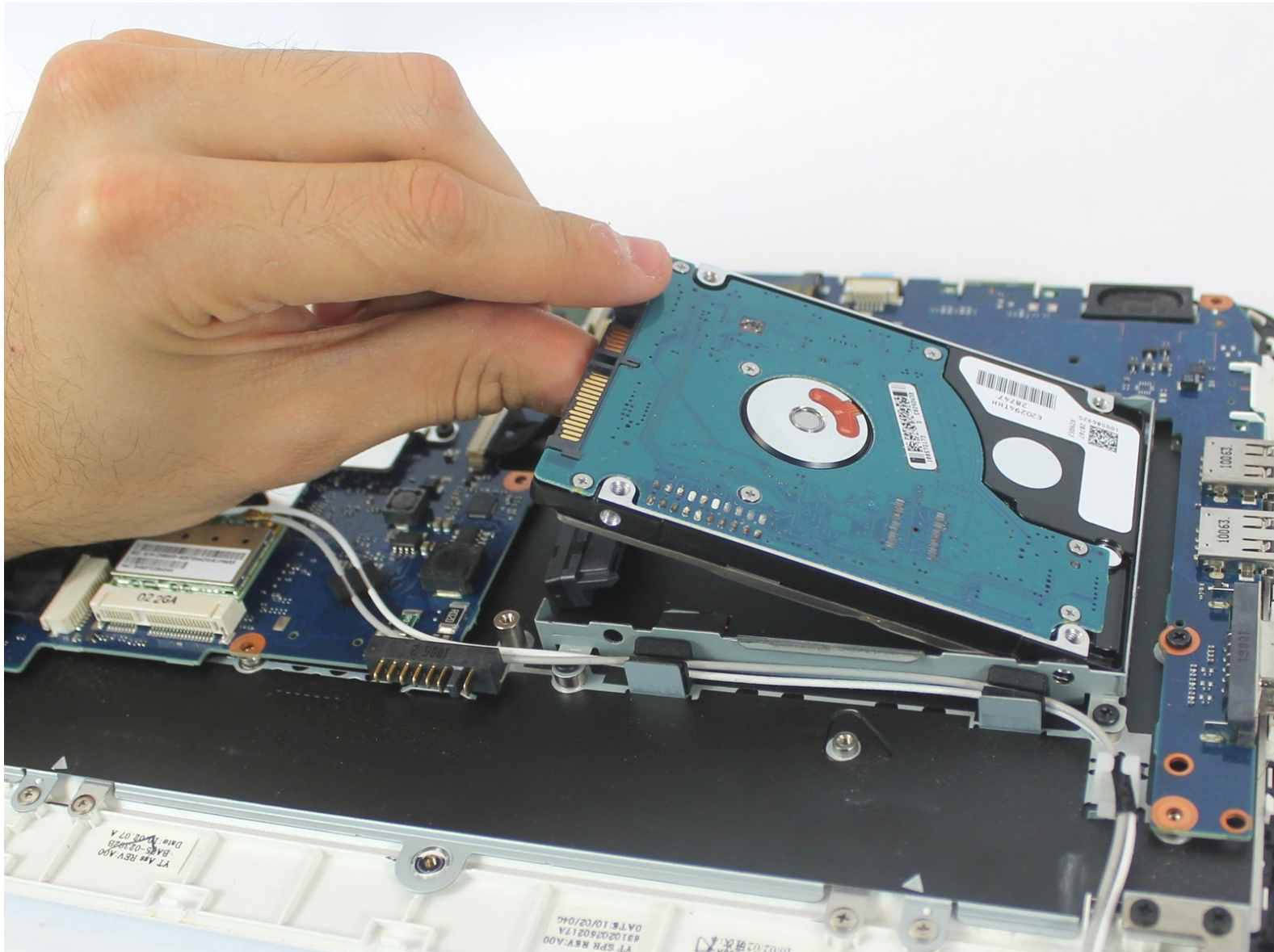




# Samsung NP-N210-JA02US Hard Drive Replacement

Replace the hard drive in your Samsung NP-N210-JA02US.

Written By: Afif Chehabaldeen



## INTRODUCTION

Follow this guide to replace/upgrade your hard drive.

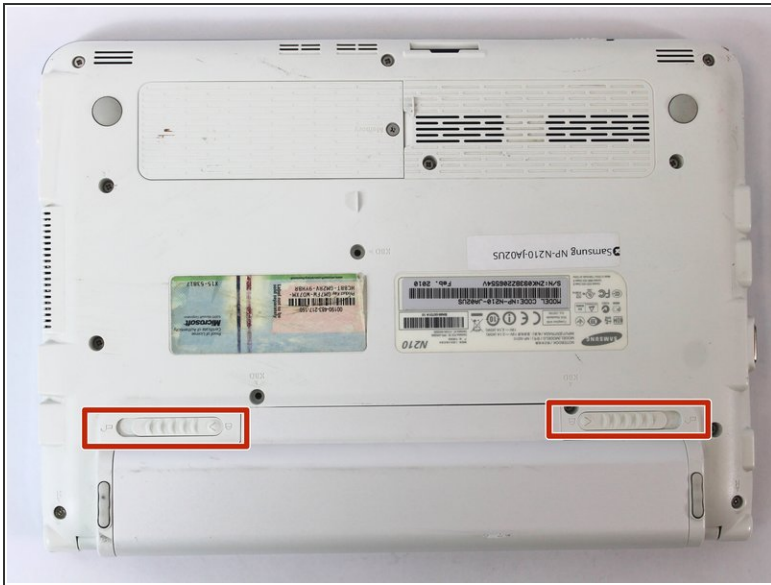
A hard drive replacement is helpful if your device is won't boot or crashes continually. Make sure your replacement hard drive is compatible with the Samsung NP-N210-JA02US.



### TOOLS:

- [Phillips #1 Screwdriver](#) (1)
  - [iFixit Opening Tools](#) (1)
-

## Step 1 — Battery



- Carefully slide both locking pins to the unlocked position.

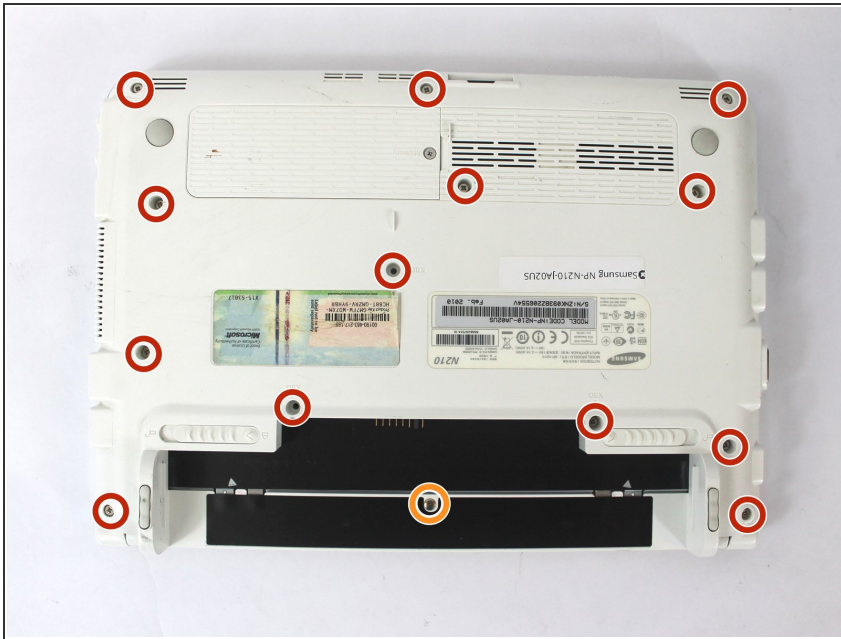
## Step 2



- Slide the battery out of its housing.



## Step 3 — Hard Drive Removal



- Remove the following 14 screws:
- Thirteen 5 mm Phillips #1 screws
- One 3.5 mm Phillips #001 screw

## Step 4



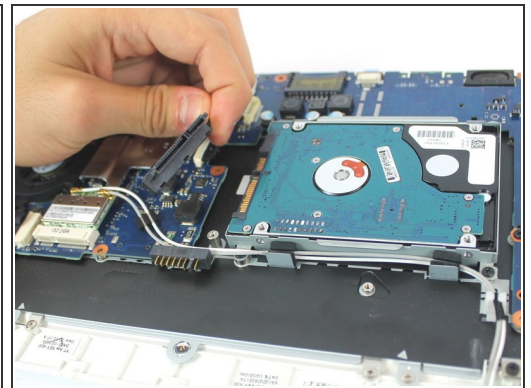
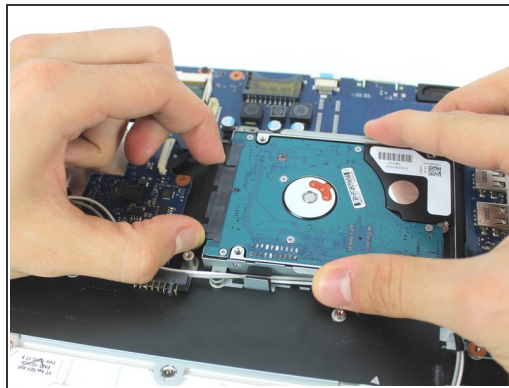
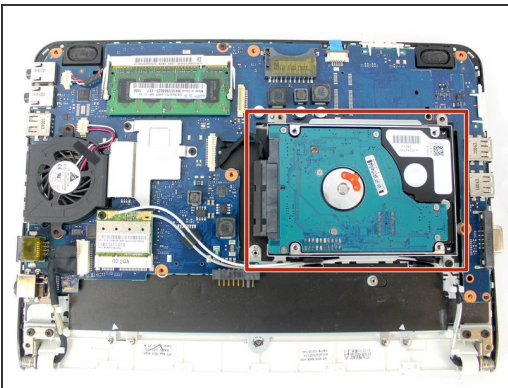
- Carefully insert the plastic opening tool into the seam between the lower casing and the chrome bezel.

## Step 5



- Slide the opening tool across all sides of the lower case. Then, lift it up to remove the case and reveal the internal components.

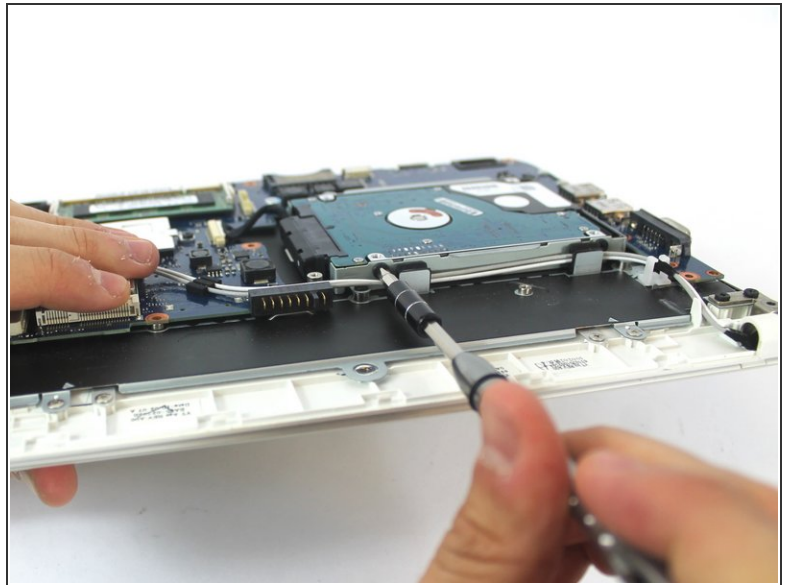
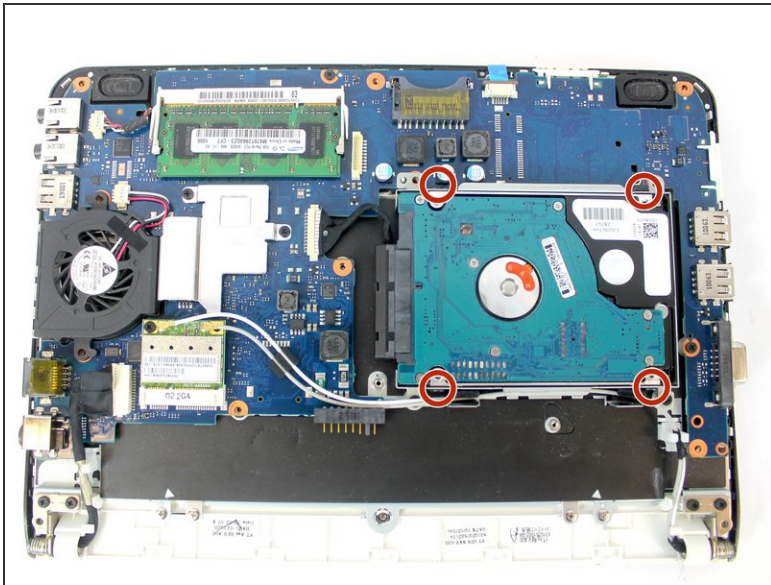
## Step 6



- Carefully unplug the SATA connector from the hard drive.

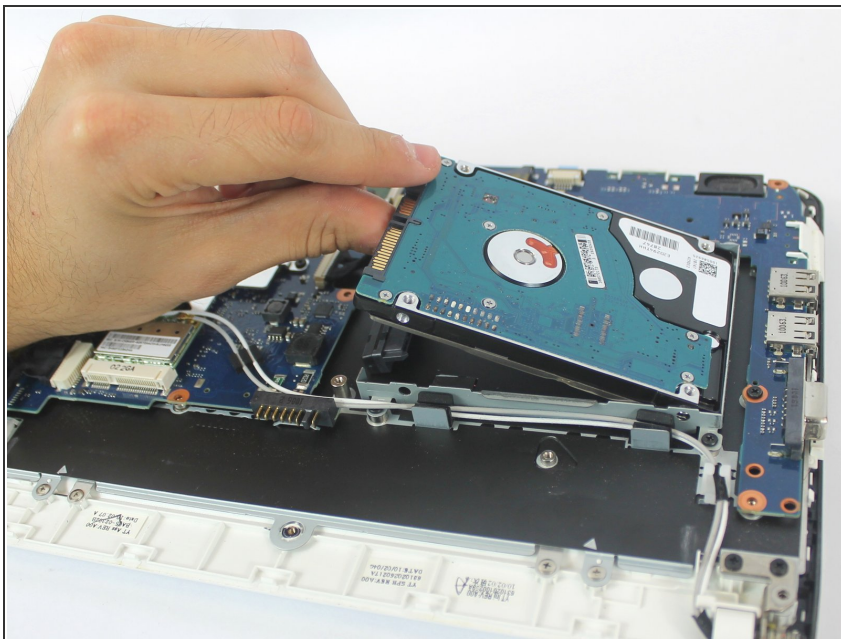


## Step 7



- Remove the four black 3.5 mm Philips #1 screws on the (side) of the hard drive.

## Step 8



- Gently lift the hard drive from its mounting bracket.

To reassemble your device, follow these instructions in reverse order.