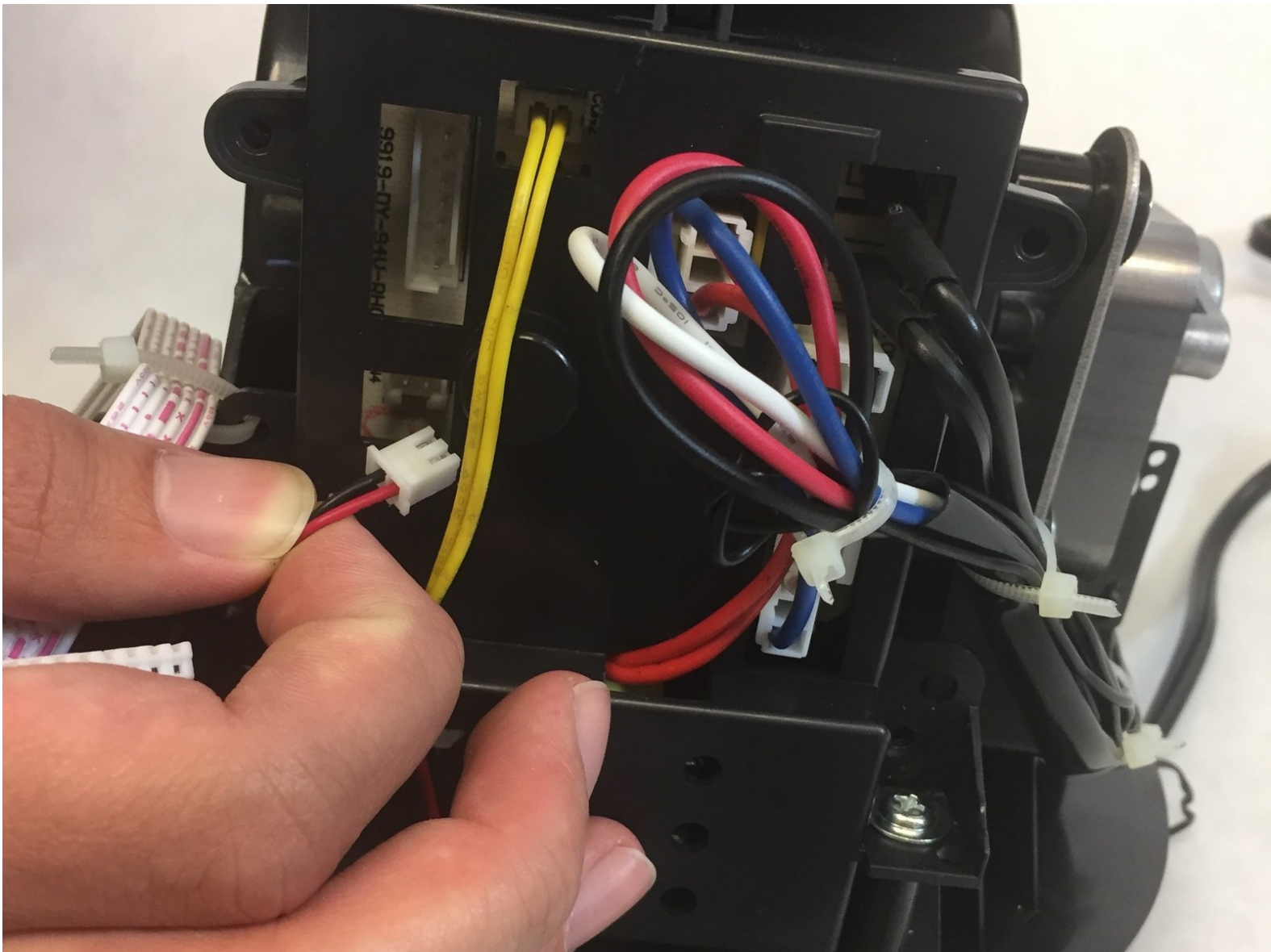




# Bionaire BAP 600 LED Night Light Replacement

This is a replacement guide for the LED Night light that's in the Bionaire BAP 600 air purifier. The LED Night light's bulb is the part that's going to be replaced in this replacement guide.

Written By: Nicholas Allen Smith



---

## INTRODUCTION

What's going to happen in this replacement guide is the deconstruction of the Bionaire BAP 600 air purifier in order to de-solder the LED bulb from the LED Night Light.

---

### TOOLS:

- [Soldering Iron](#) (1)
  - [Solder](#) (1)
-

## Step 1 — Base/Intake



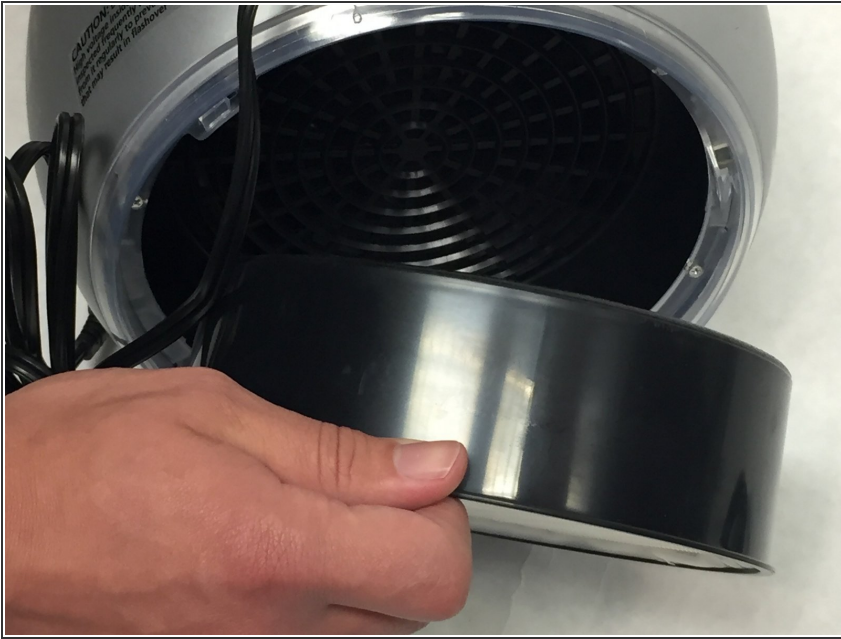
- Rotate base counterclockwise, supporting top with opposite hand.

## Step 2



- Pull base away from housing exposing air filter.

## Step 3 — Air Filter



- Grab the edge of the filter housing and pull the filter away from the rest of the device.

## Step 4



- Gently pull apart each fold of the filter to check for abrasions or other anomalies. Clean with a dust rag if necessary.

## Step 5 — Outer Shell



- Remove all 6 screws from the LED housing.

## Step 6



- After the 6 screws are removed, remove the LED housing from the bottom of the device by lifting it off.

## Step 7



- Using two fingers lift the translucent LED cover from the inside. Repeat this step for the second tab.

## Step 8



- After lifting 45 degrees, pull the translucent tab away from the housing. Repeat this step for the second LED cover.

## Step 9



- Locate the tab about 1 inch below the top vent. Insert a flat tool laterally past the tab and press in toward the center of the device. As the tab is being held down, pull the two halves of the egg apart to keep the shell open.

## Step 10



- Locate the second tab on the back of the device approximately 2 inches above the power cord.
- Insert the flat tool at a slight angle toward the left of the power cord. Depress the tab and pull the two halves of the shell apart.

## Step 11



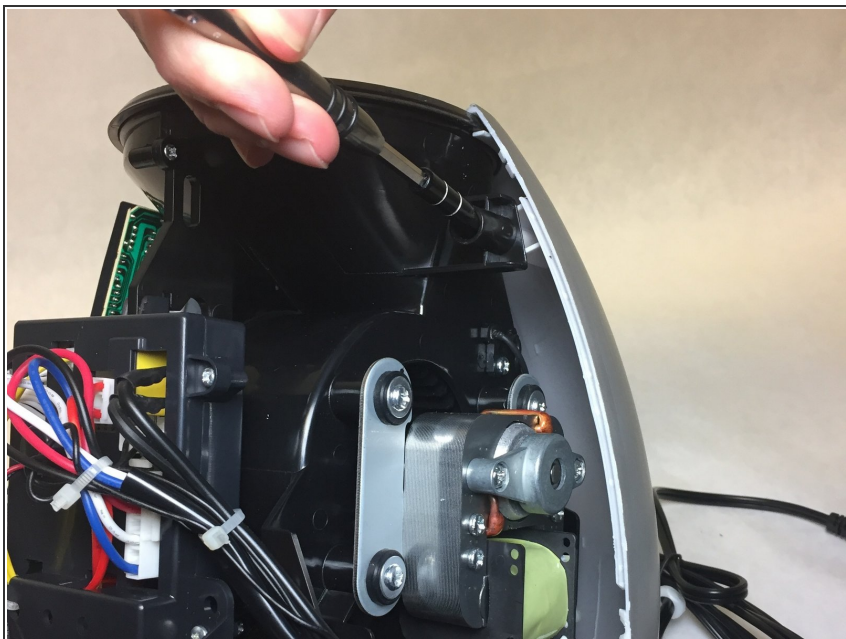
- Locate the bottom tab on the front side at the same height as the bottom tab on the back side.
- Depress the tab using a flat tool at a slight angle and pull the halves apart.

## Step 12



- Locate the last tab about one inch below the top on the front side.
- Depress the tab using the flat tool at a slight angle and finish pulling the removable half of the shell off.

## Step 13



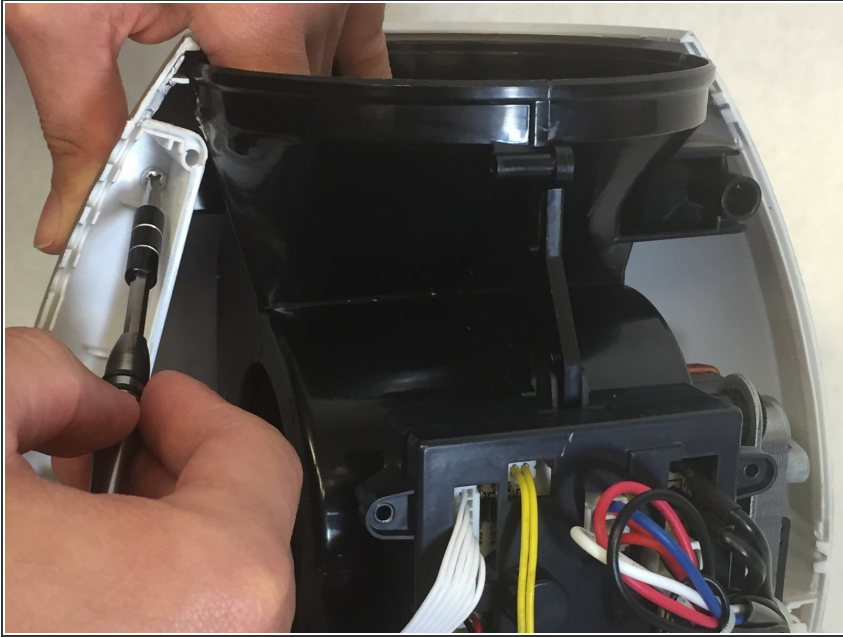
- Locate the screw housing opposite of the control board, and remove the screw.

## Step 14



- Locate the control board and grab it by the top and bottom firmly. Pull the board straight out being careful not to flex the circuit while removing.

## Step 15



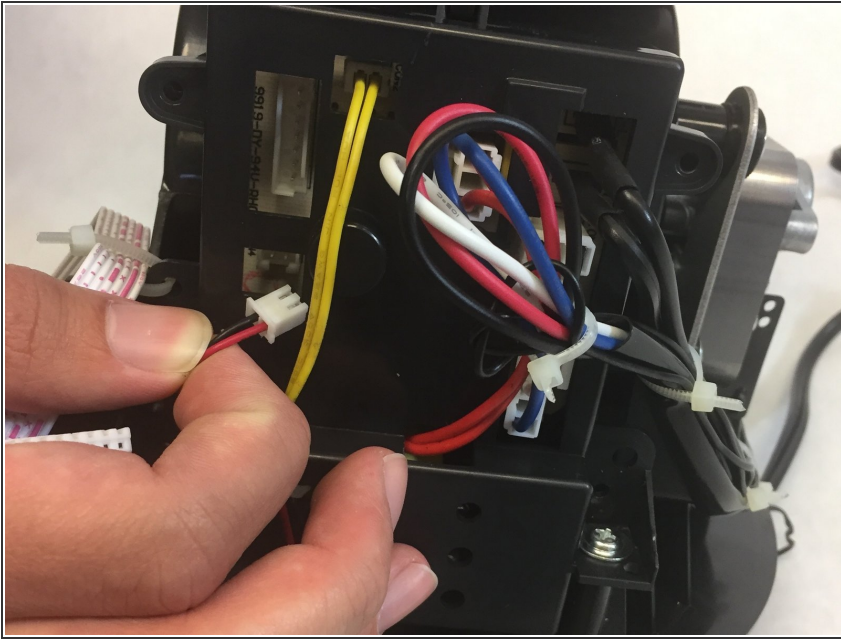
- Locate the screw that was being hidden by the control board and remove it to release the second half of the shell.

## Step 16



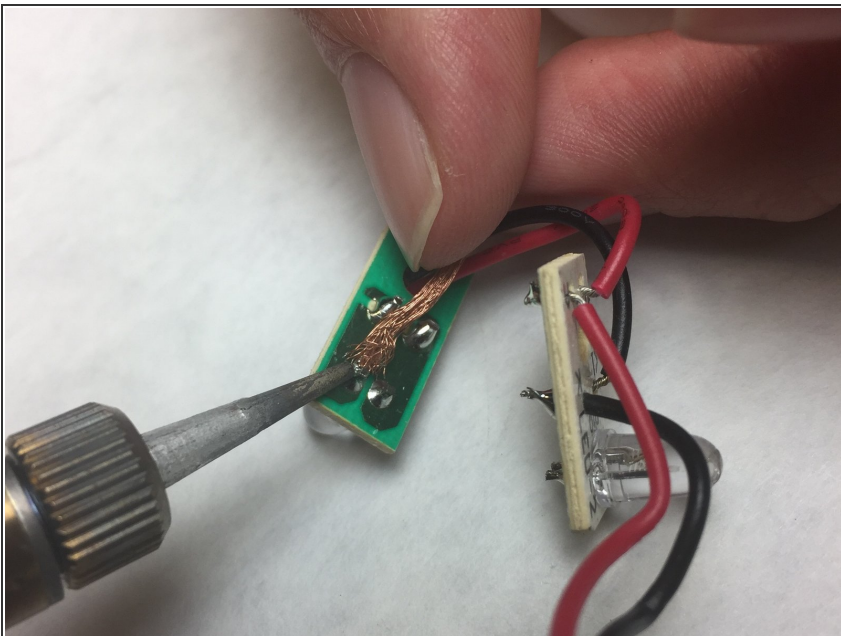
- Remove the released half of the shell to finish removing the entire outer shell of the device.

## Step 17 — LED Night Light



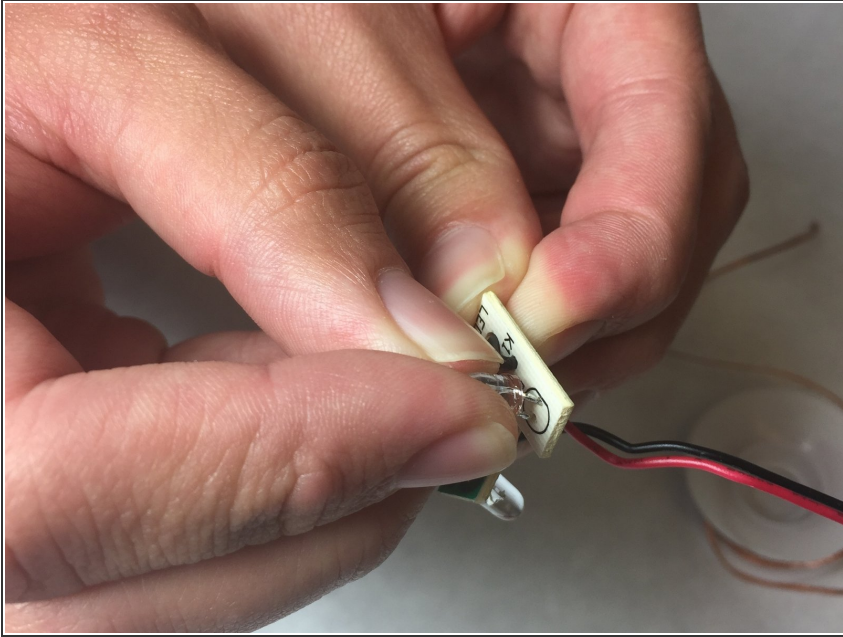
- Next, once you see the interior of the air purifier there will be male ports with cables coming out of these ports as seen below. Thus, it is easy as taking the two wired male port (black and red) by pulling it towards you as seen below.
- Note: There will be zip ties that are connecting the black and red wires together. Cut the zip ties.

## Step 18



- Note: Pull the circuit board with the LED bulb underneath the air purifier gently in order to change out the LED bulb.
- Now, use a soldering kit in order to de-solder the solder that's on the circuit board with the LED light as seen below. Hence, once you de-solder the solder from the LED light's wires you can move on to the next step.

## Step 19



- Next, the last step is to gently remove the LED light from the circuit board and replace the bad LED light bulb with a new one as shown below.

To reassemble your device, follow these instructions in reverse order.