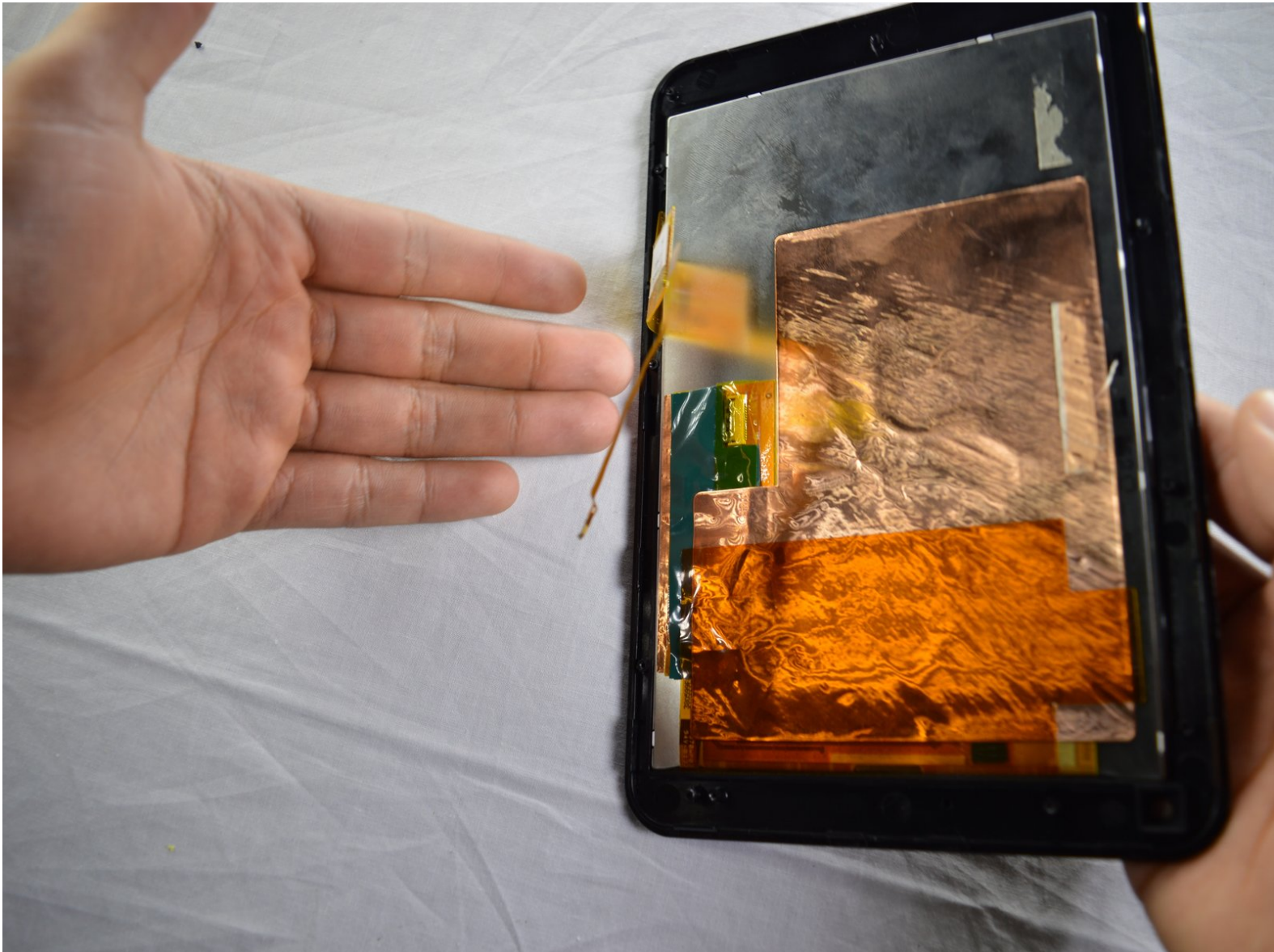




# HP Slate 7 Plus 4200US LCD Screen Replacement

Use this guide to replace the LCD screen on the HP Slate 7 Plus.

Written By: Jessica Andrade





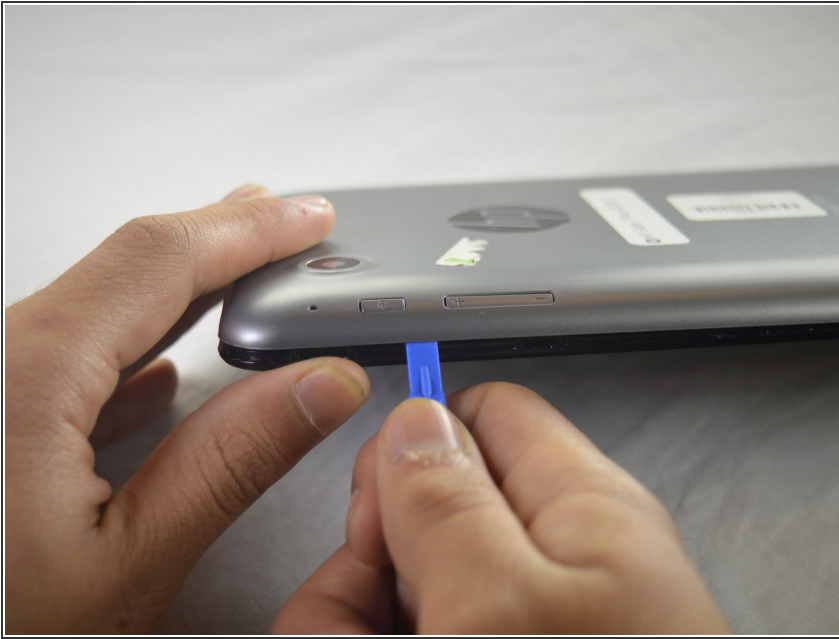


## TOOLS:

- [Spudger](#) (1)
- [Soldering Iron](#) (1)
- [iFixit Opening Tools](#) (1)
- [Phillips #00 Screwdriver](#) (1)
- [Tweezers](#) (1)



## Step 1 — Tablet Cover



- Turn off the tablet and disconnect the power and all external devices from the tablet.
- Position the tablet with the display panel down and the right side toward you.
- Carefully insert a plastic opening tool between the tablet cover and display panel assembly, separating the two components. The first insertion point should be between the power button and the volume buttons.

## Step 2



- Slide the tool around the perimeter of the tablet until the edge of the cover is completely separated from the display panel assembly.

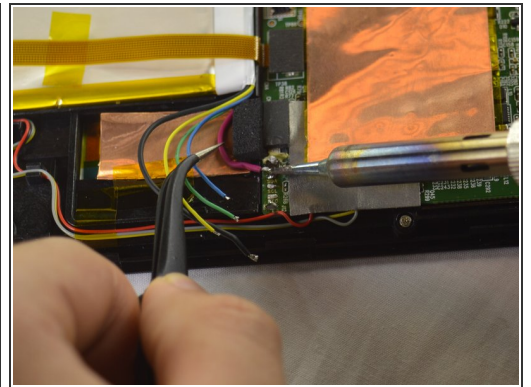
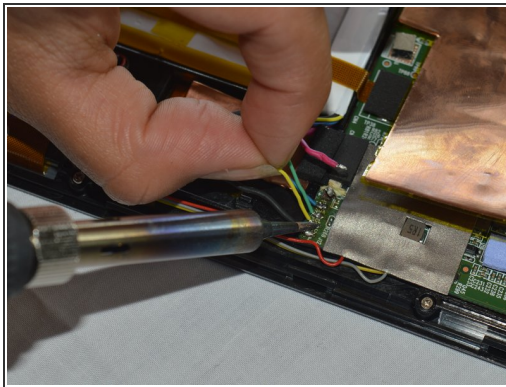
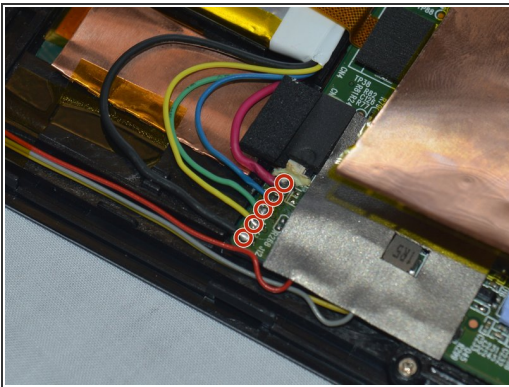


## Step 3



- Pry open the back cover to take it off.

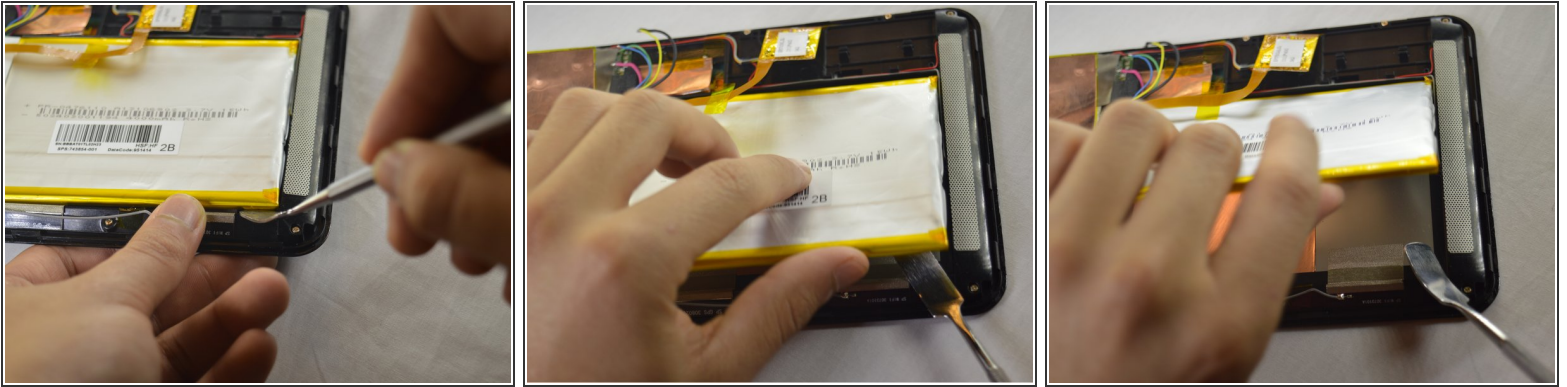
## Step 4 — Battery



- Disconnect the battery cables from the system board by desoldering them. See [iFixit guide on how to solder](#).
- ⓘ The battery cables are soldered to the system in the following sequence, top to bottom: red, blue, green, yellow, black.

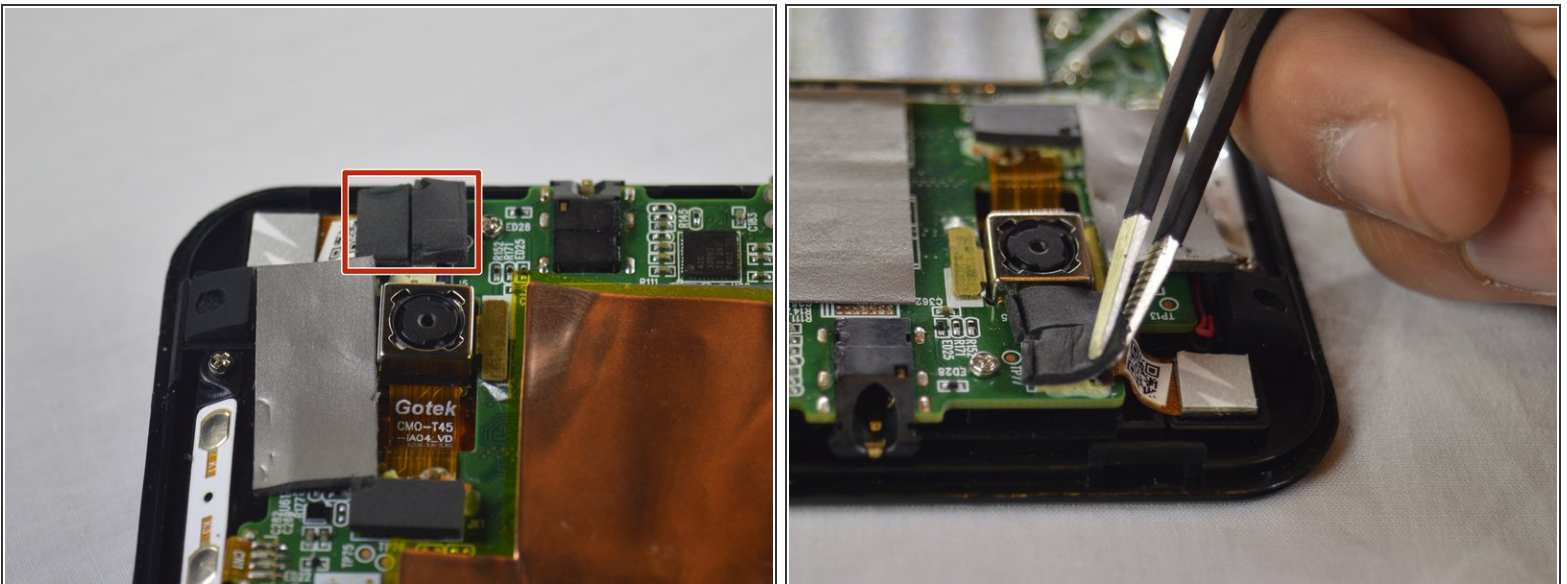


## Step 5



- Insert a nylon spudger between the battery and the display panel assembly. Carefully pry the battery up and remove it from its place.
- ⓘ The battery is attached to the display panel assembly with double-sided adhesive. Make sure to firmly pull the battery.
- ⚠ The regular black nylon spudger should be used whenever possible, especially around batteries.

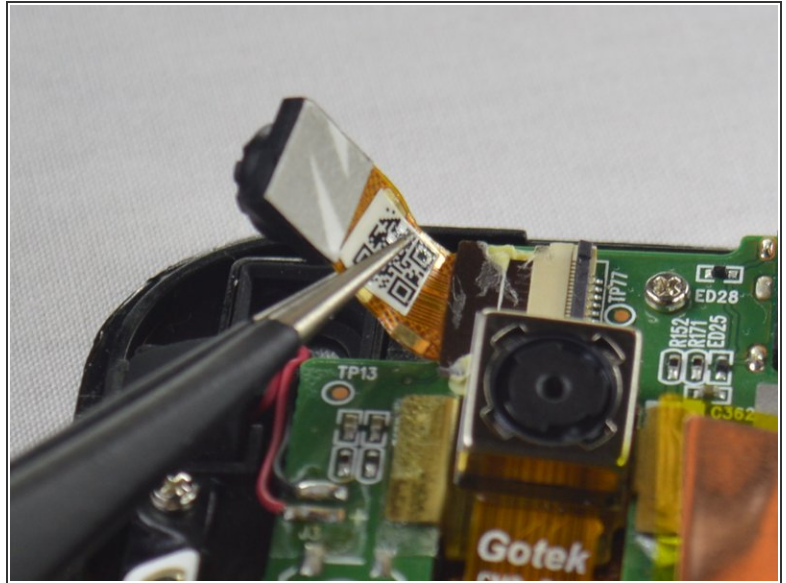
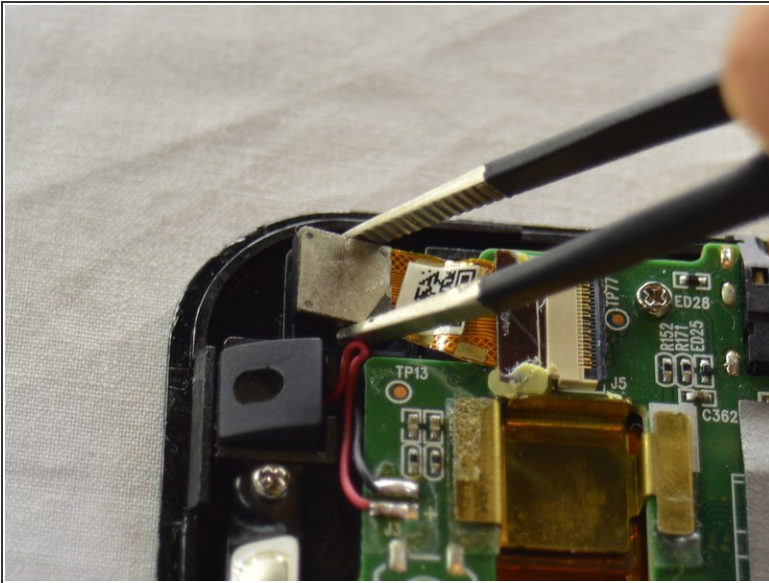
## Step 6 — Front Facing Webcam



- Use tweezers to remove the black foam stickers from the front facing camera to expose the wiring.

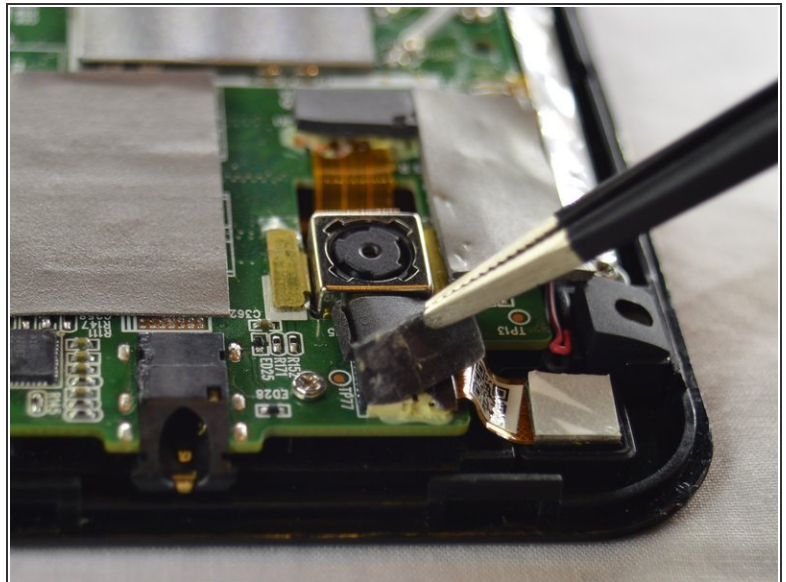
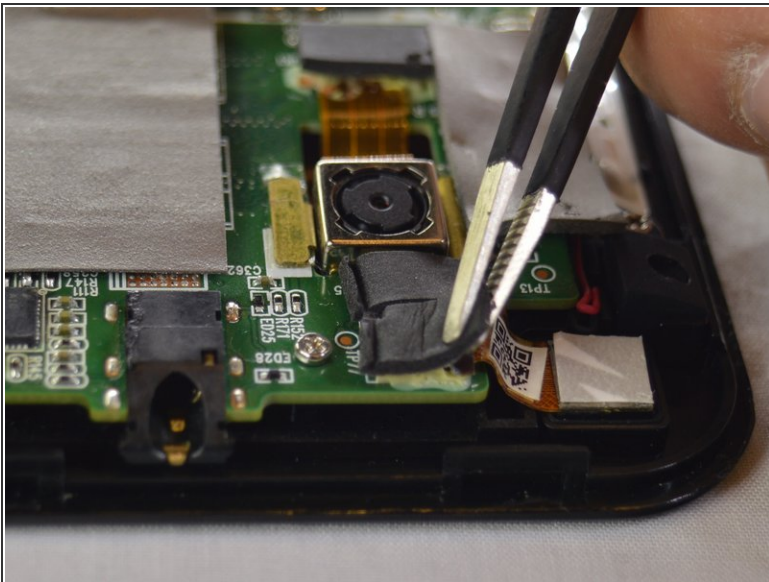


## Step 7



- Lift the camera out from system board and firmly pull the wire out from the connector.

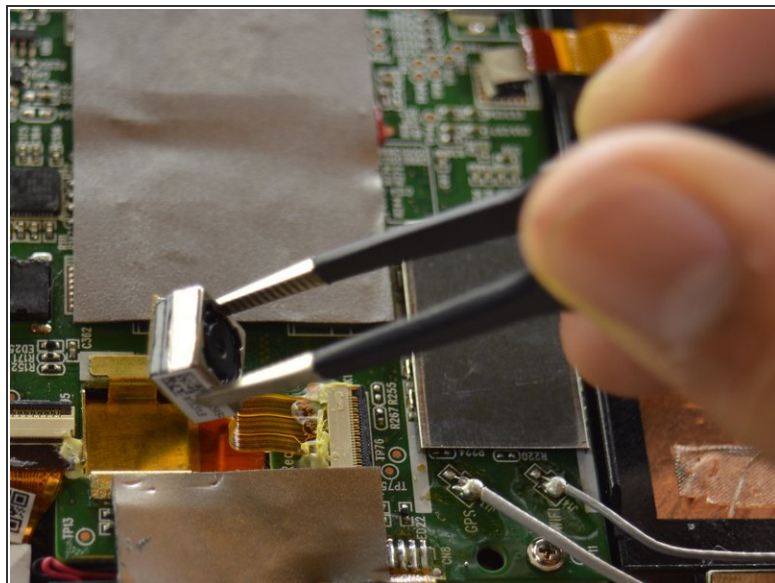
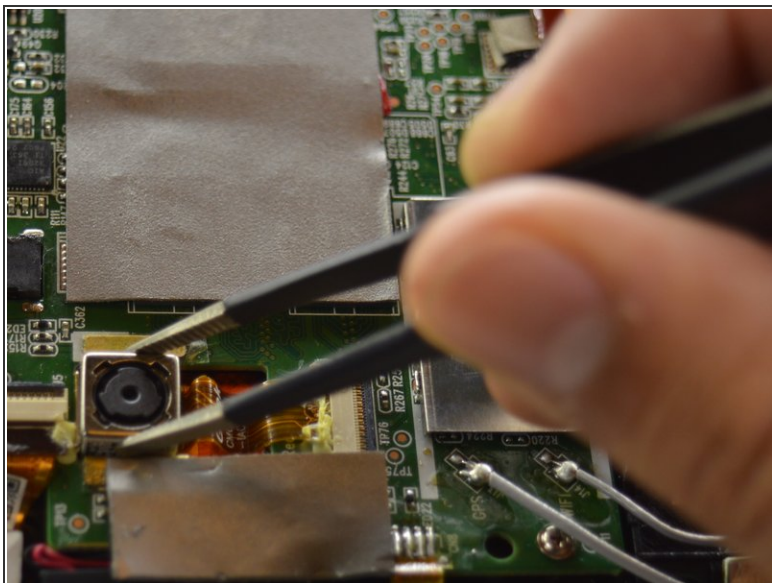
## Step 8 — Rear Facing Webcam



- Use the tweezers to remove the black foam stickers from the rear facing camera to expose the wiring.

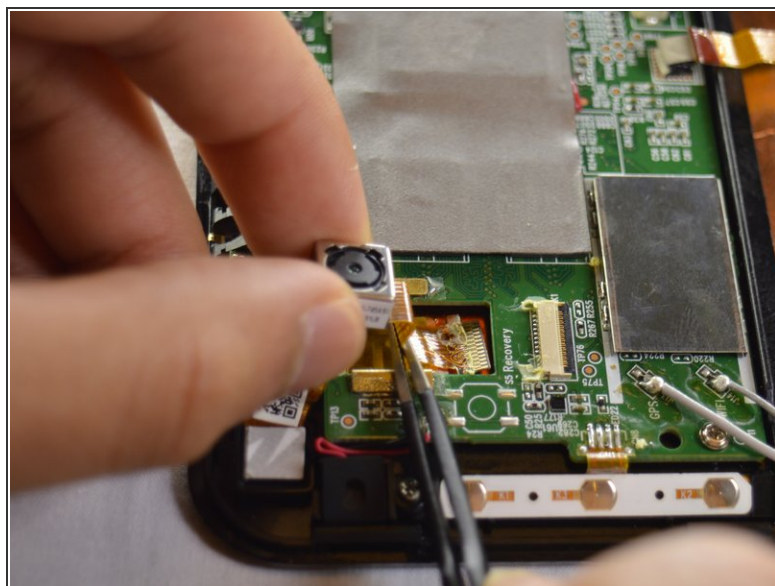
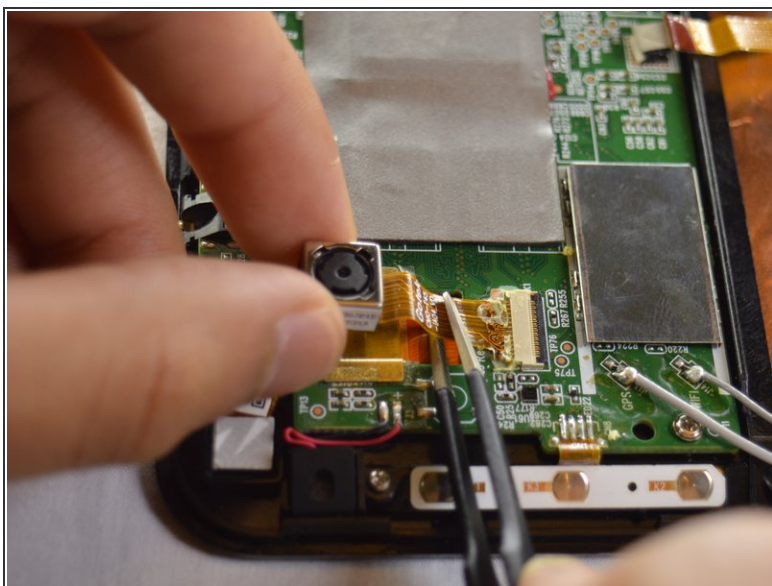


## Step 9



- Using tweezers, lift the camera out from system board.

## Step 10



- Use tweezers to pull the wire out from the connector. Pull away from the connector, parallel to the tablet.

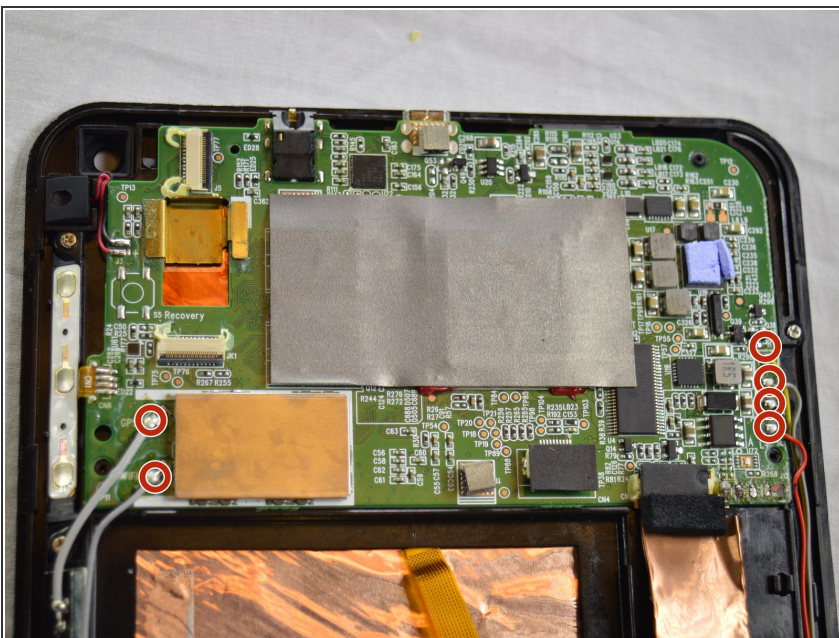


## Step 11 — System Board



- Remove the four screws from the motherboard using a Phillips 00 screwdriver.

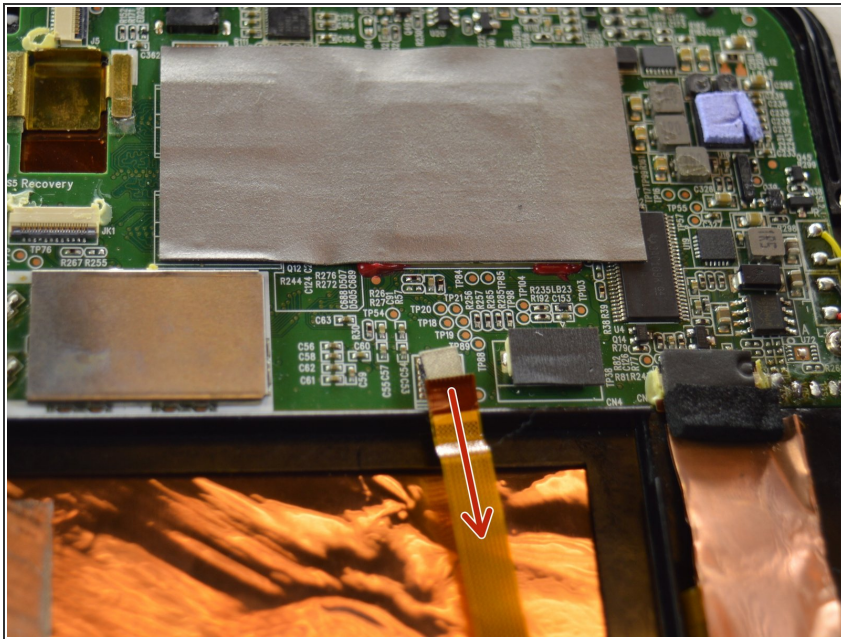
## Step 12



- Remove the two grey wires on the left and the four multicolored wires on the right by desoldering them. See [iFixit guide on how to solder](#).
- ⓘ The multicolored wires are in soldered in order from top to bottom in the following order: yellow, grey, black, and red.

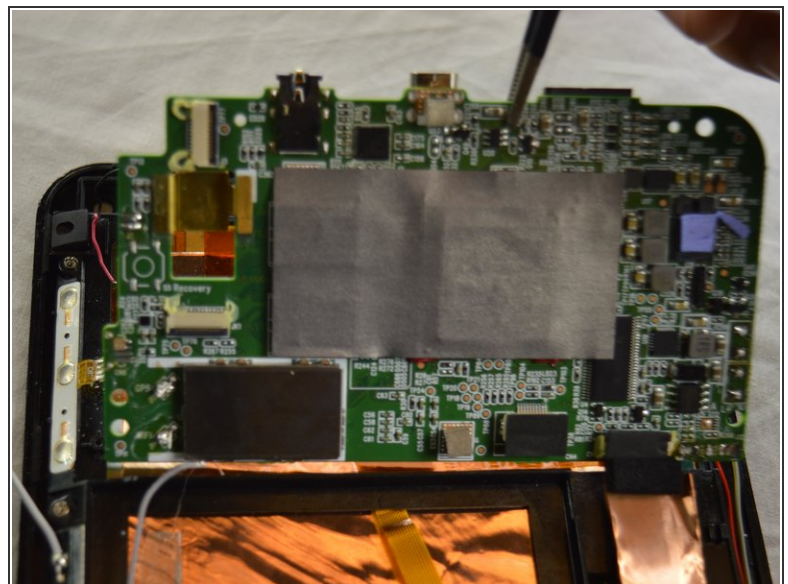
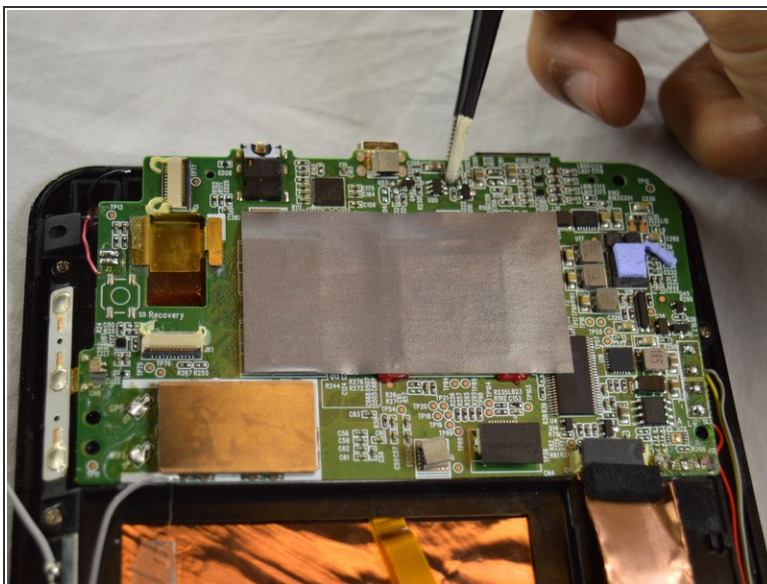


## Step 13



- Disconnect the LCD wire from the connector by pulling away from the connector, parallel to the tablet.

## Step 14



- Using tweezers, lift the system board and remove it.

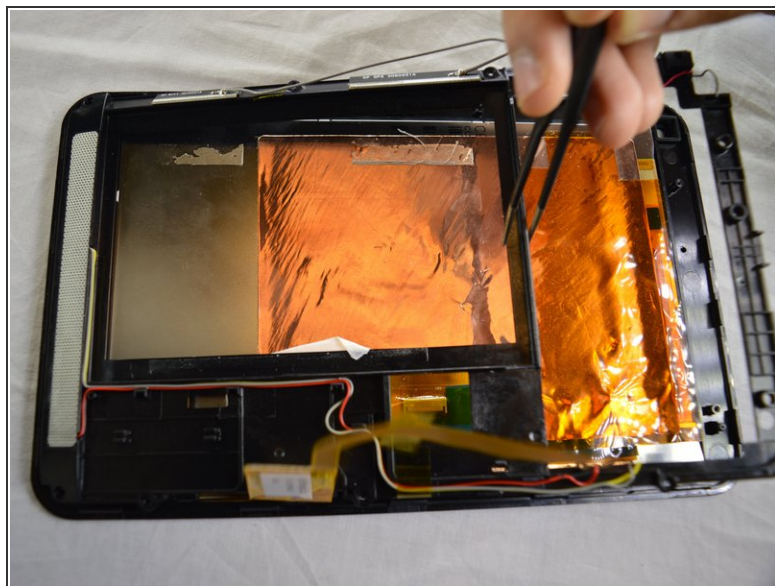
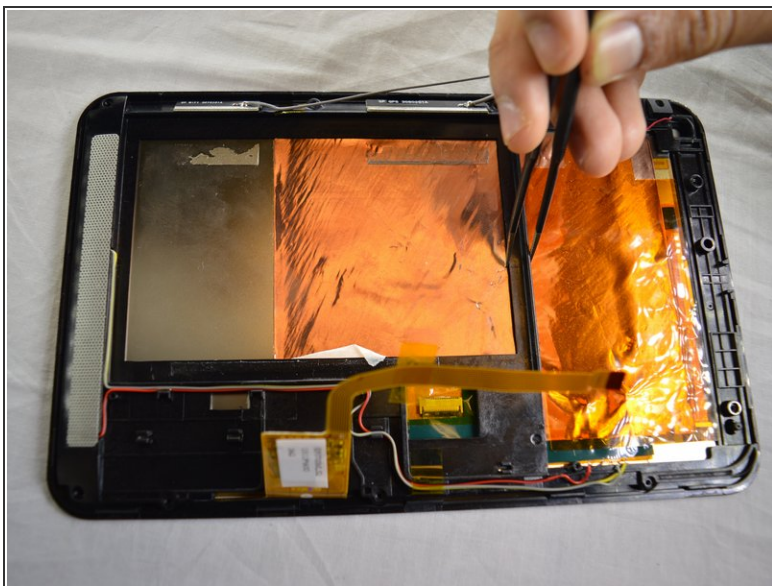


## Step 15 — Speaker



- Unscrew 8 screw using a Phillips 00 screwdriver.

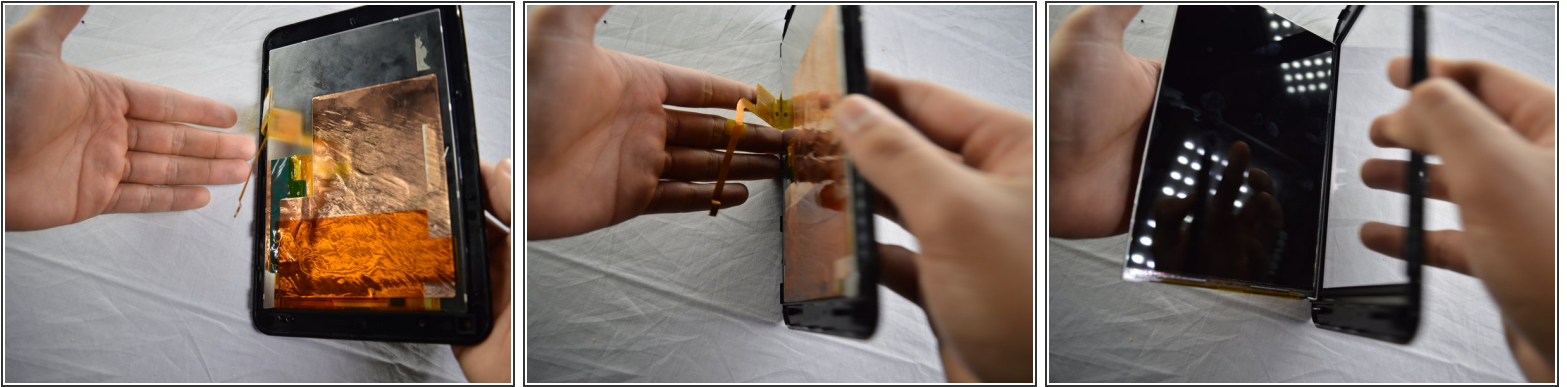
## Step 16



- Grab the center of the plastic frame, which has the speaker, and lift to remove it.



## Step 17 — LCD Screen



- Remove the screen by holding the tablet in one hand with the back of the LCD screen facing up. Slowly rotate the tablet so the screen falls into your other hand.

To reassemble your device, follow these instructions in reverse order.