



# HP Slate 7 Plus 4200US System Board Replacement

Use this guide to replace the system board on the HP Slate 7 Plus.

Written By: Jessica Andrade





## TOOLS:

- [Spudger](#) (1)
- [Soldering Iron](#) (1)
- [iFixit Opening Tools](#) (1)
- [Tweezers](#) (1)
- [Phillips #00 Screwdriver](#) (1)

## Step 1 — Tablet Cover



- Turn off the tablet and disconnect the power and all external devices from the tablet.
- Position the tablet with the display panel down and the right side toward you.
- Carefully insert a plastic opening tool between the tablet cover and display panel assembly, separating the two components. The first insertion point should be between the power button and the volume buttons.

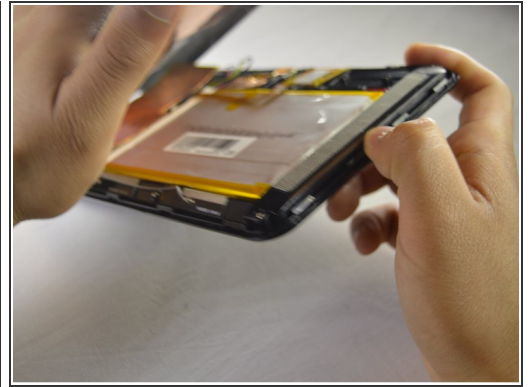
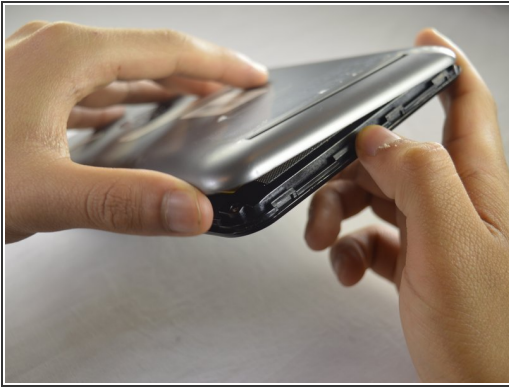
## Step 2



- Slide the tool around the perimeter of the tablet until the edge of the cover is completely separated from the display panel assembly.

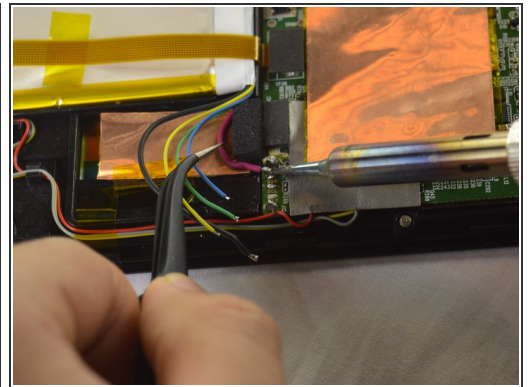
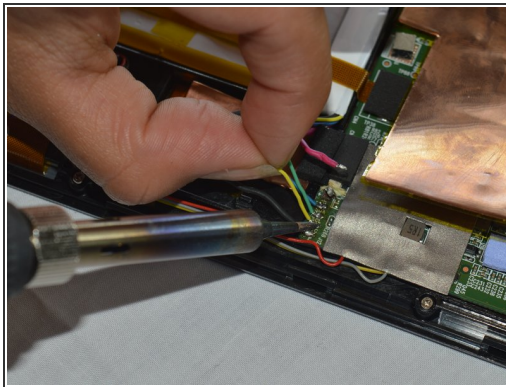
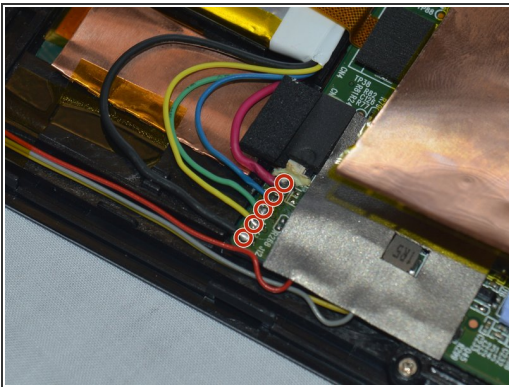


## Step 3



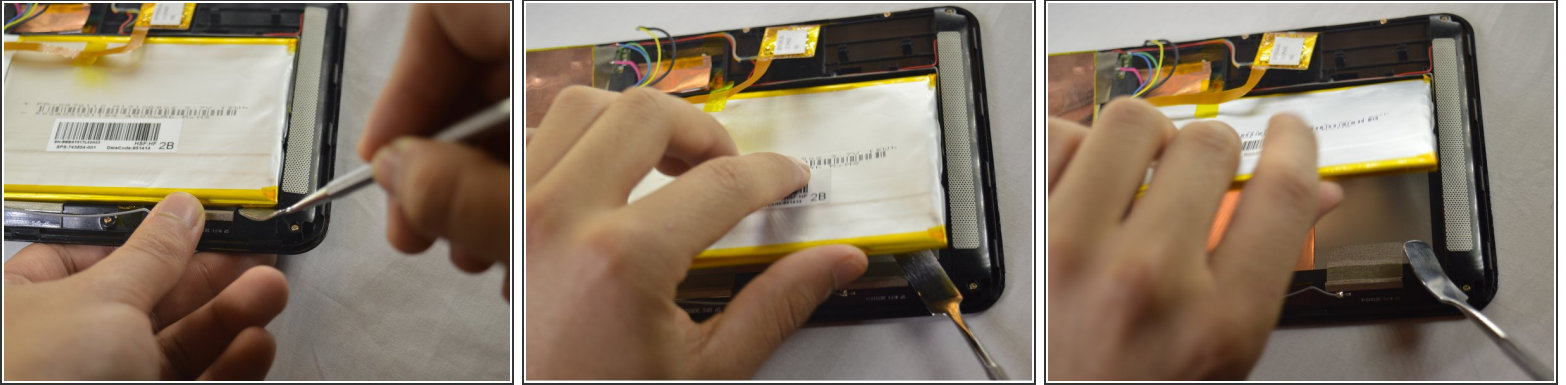
- Pry open the back cover to take it off.

## Step 4 — Battery



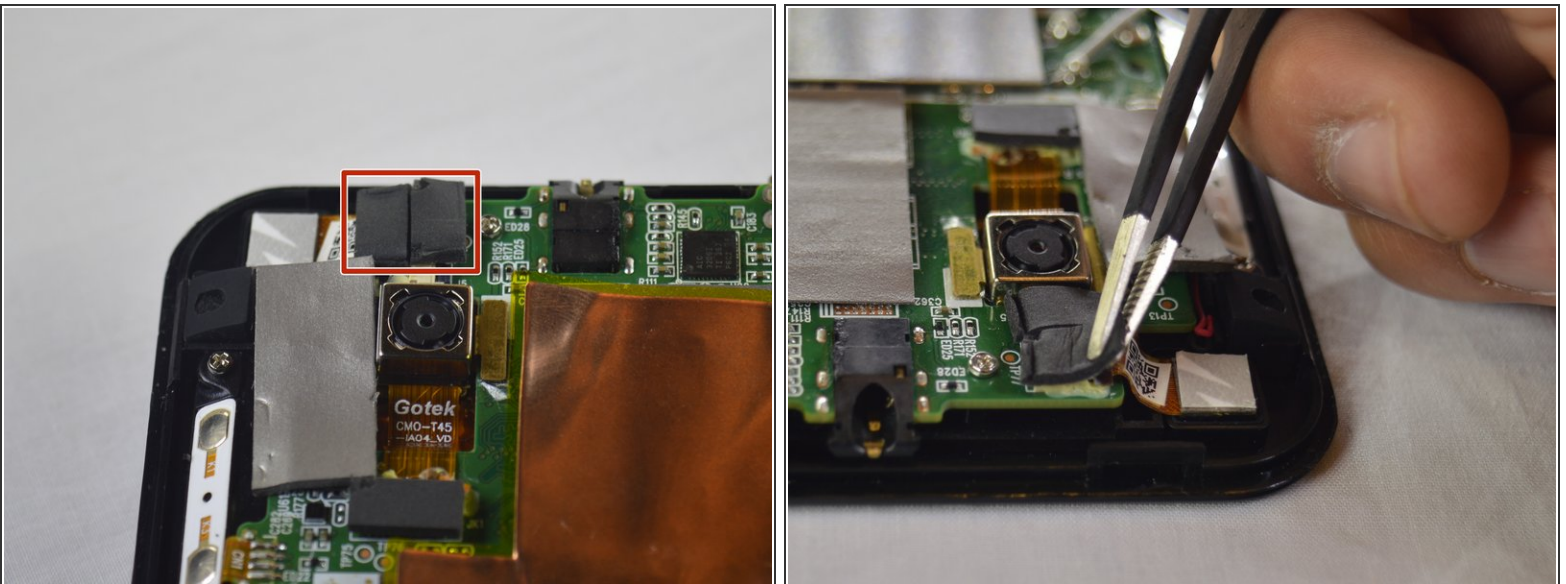
- Disconnect the battery cables from the system board by desoldering them. See [iFixit guide on how to solder](#).
- ⓘ The battery cables are soldered to the system in the following sequence, top to bottom: red, blue, green, yellow, black.

## Step 5



- Insert a nylon spudger between the battery and the display panel assembly. Carefully pry the battery up and remove it from its place.
- ⓘ The battery is attached to the display panel assembly with double-sided adhesive. Make sure to firmly pull the battery.
- ⚠ The regular black nylon spudger should be used whenever possible, especially around batteries.

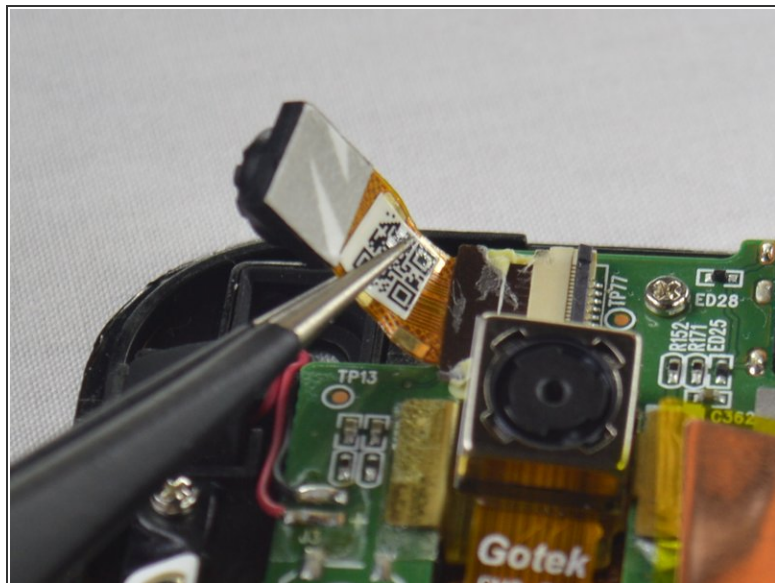
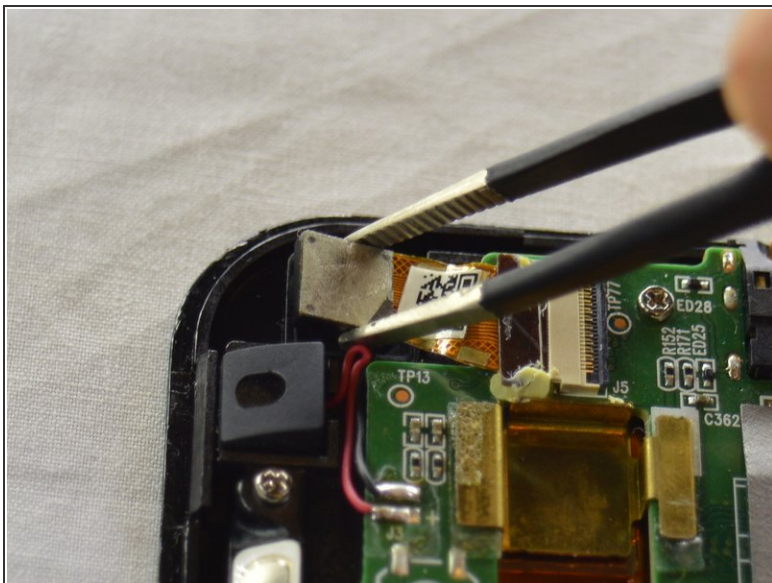
## Step 6 — Front Facing Webcam



- Use tweezers to remove the black foam stickers from the front facing camera to expose the wiring.

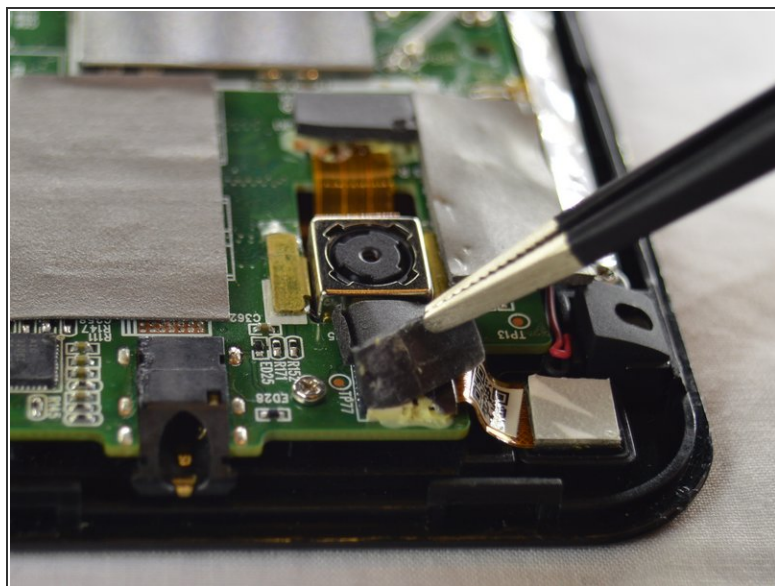
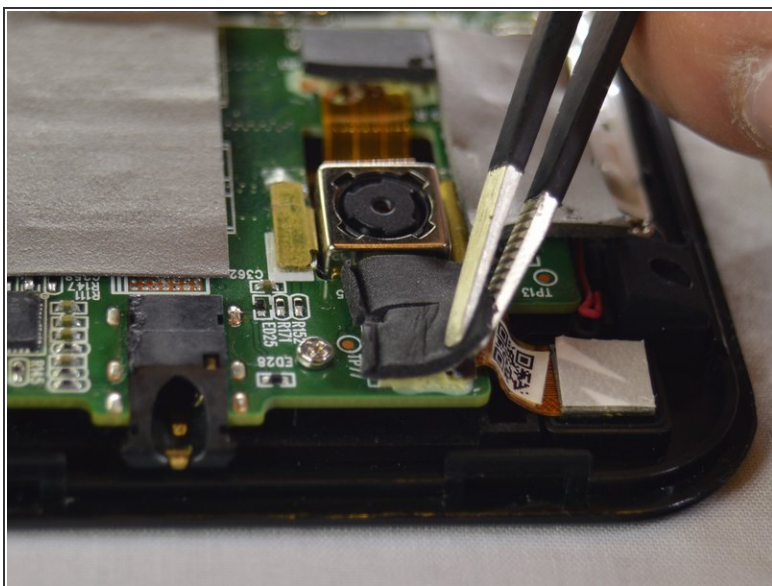


## Step 7



- Lift the camera out from system board and firmly pull the wire out from the connector.

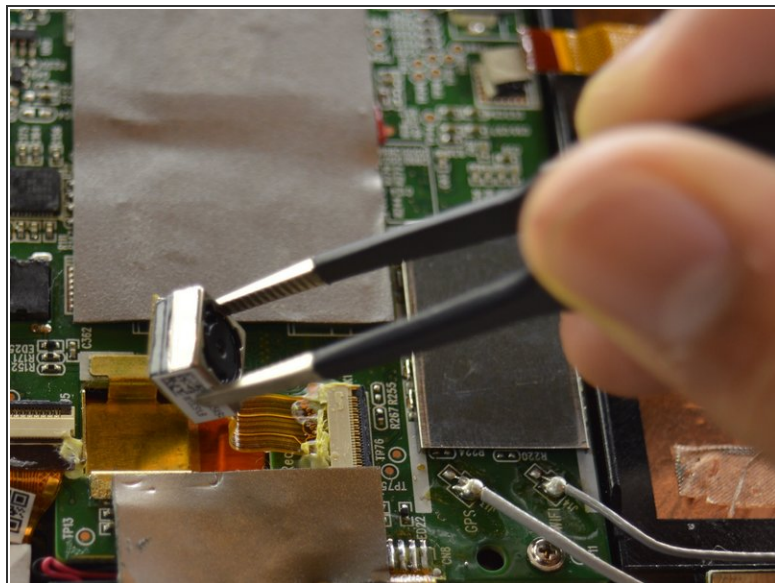
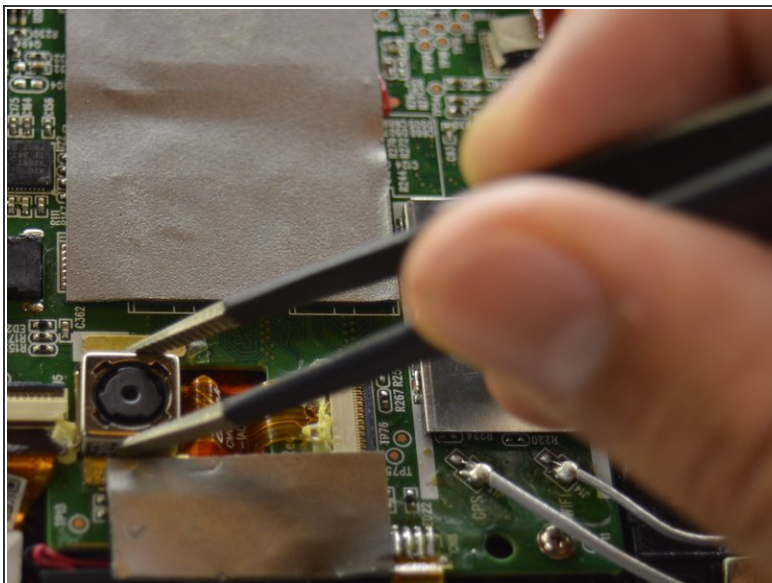
## Step 8 — Rear Facing Webcamera



- Use the tweezers to remove the black foam stickers from the rear facing camera to expose the wiring.

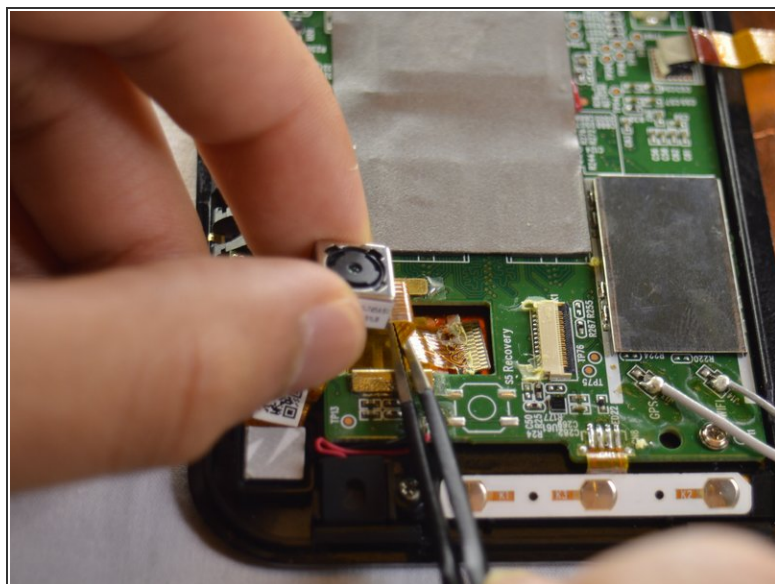
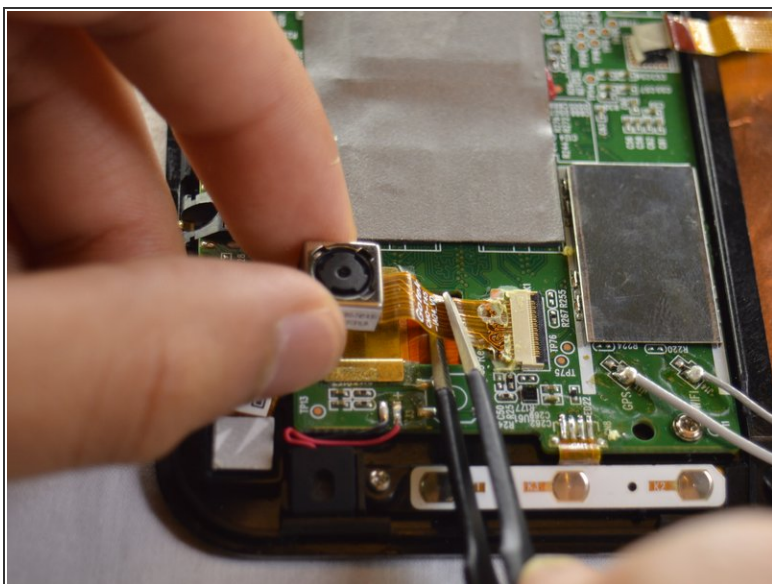


## Step 9



- Using tweezers, lift the camera out from system board.

## Step 10



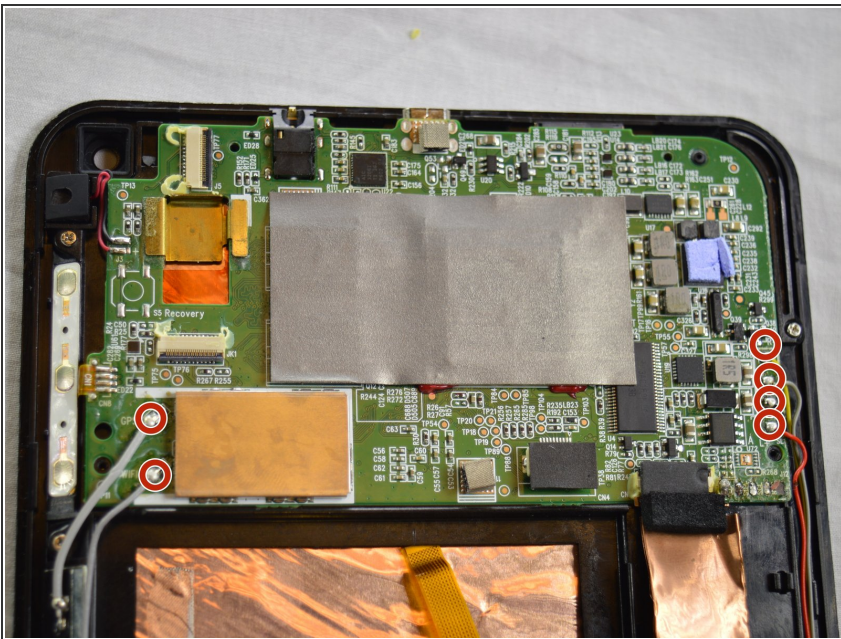
- Use tweezers to pull the wire out from the connector. Pull away from the connector, parallel to the tablet.

## Step 11 — System Board



- Remove the four screws from the motherboard using a Phillips 00 screwdriver.

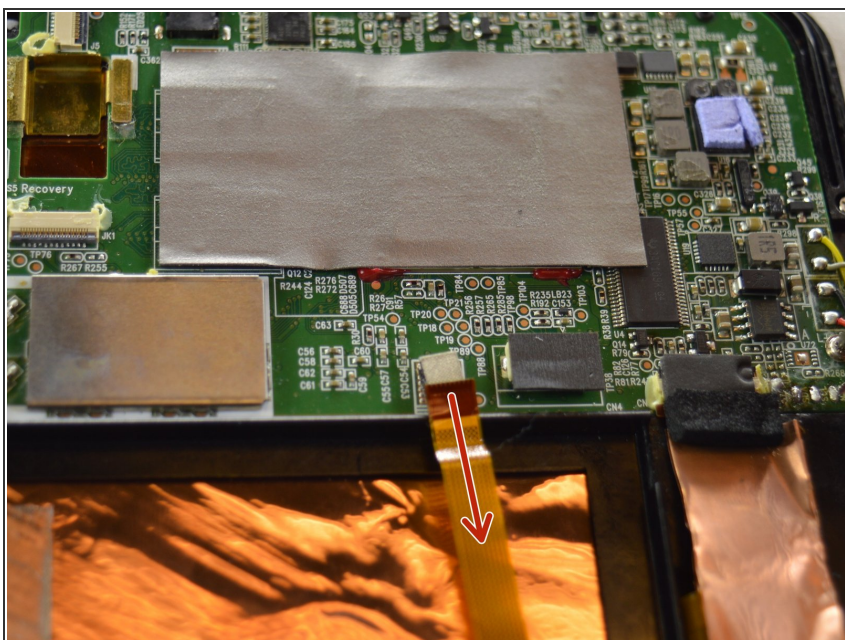
## Step 12



- Remove the two grey wires on the left and the four multicolored wires on the right by desoldering them. See [iFixit guide on how to solder](#).
- ① The multicolored wires are in soldered in order from top to bottom in the following order: yellow, grey, black, and red.

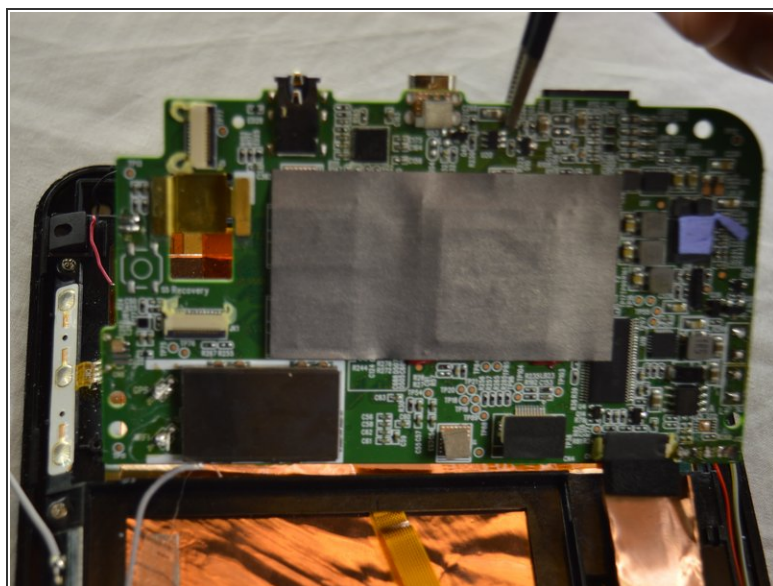
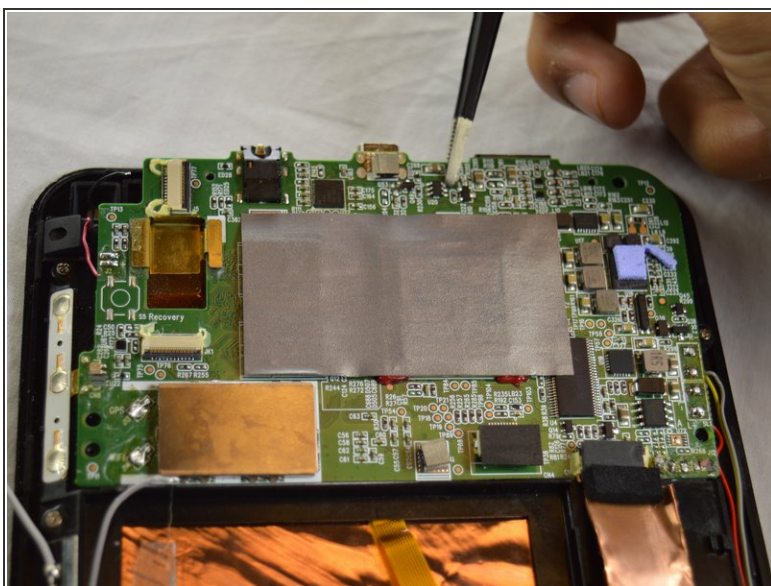


## Step 13



- Disconnect the LCD wire from the connector by pulling away from the connector, parallel to the tablet.

## Step 14



- Using tweezers, lift the system board and remove it.

To reassemble your device, follow these instructions in reverse order.