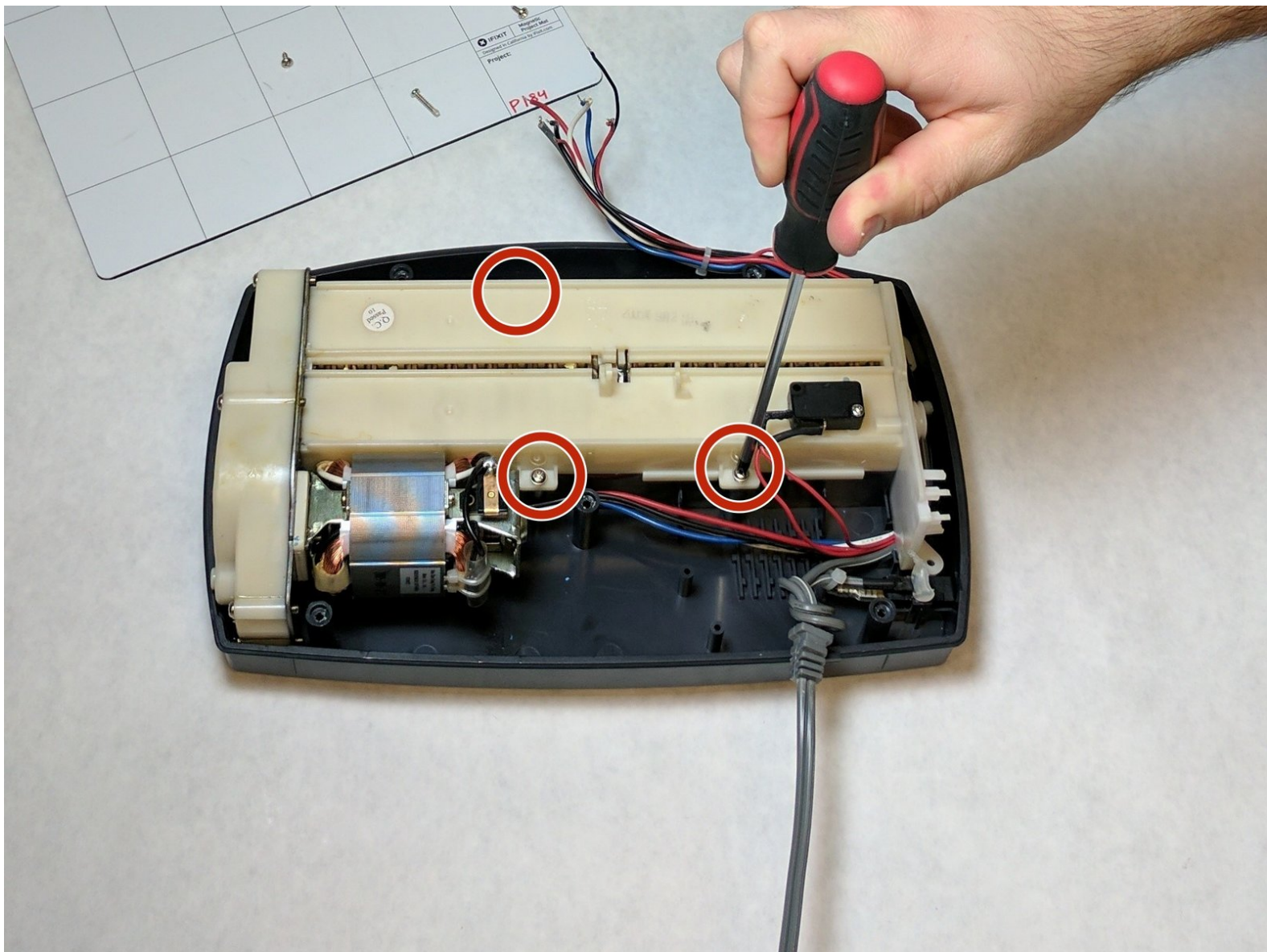




Fellowes T7CM Gear and Shaft Replacement

This guide walks the user through process to remove the gears and the shafts of the Fellowes T7CM paper shredder.

Written By: Michael Aldrich



INTRODUCTION

This guide walks the user through process to remove the gears and the shafts of the Fellowes T7CM paper shredder.



TOOLS:

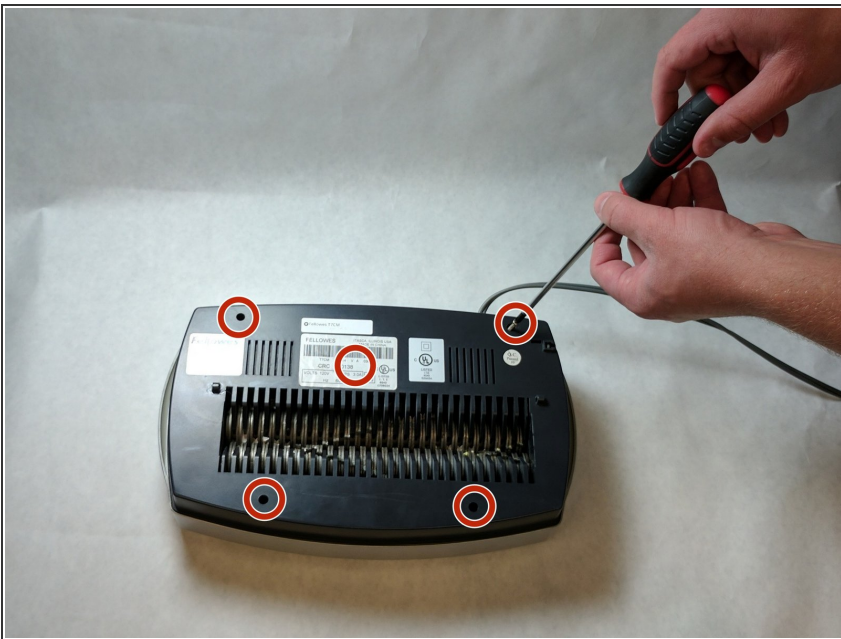
- [Phillips #000 Screwdriver](#) (1)
-

Step 1 — Fellowes T7CM Casing and Trigger Replacement



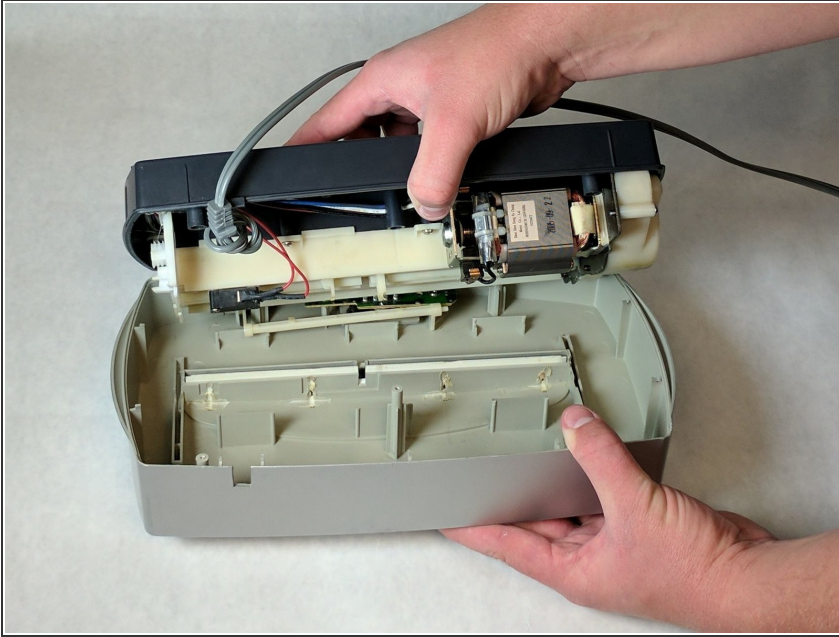
- Check to make sure the shredder is not plugged in to any electrical outlet.
- Remove the shredder from the catch basket and place the silver side down on a flat surface.
- Place the catch basket aside as you will not be needing it for the rest of the disassembly.

Step 2



- Flip the shredder silver side down and place on a flat even surface.
- Remove the manufacturer's label in order to gain access to the hidden screw hole.
- Locate all five of the case screws and remove them with a Phillips-Head screwdriver. The screws are located within the five marked circles in the photo. The size of the screws are 18 mm in length and head diameter of 5 mm.

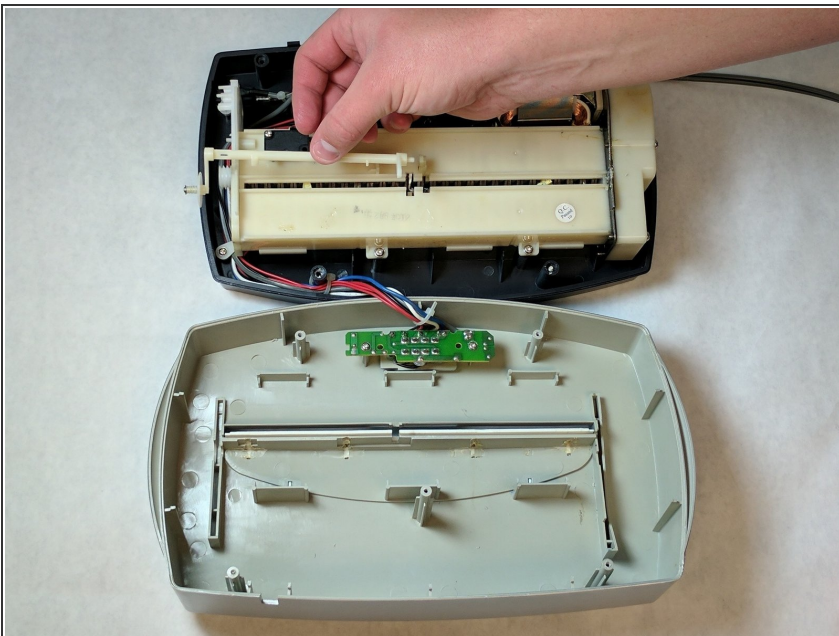
Step 3



- Once all of the screws are removed, slowly pull apart the casing.
- If the casing is not separating, gently wiggle the top part of the casing from the bottom part of the casing.

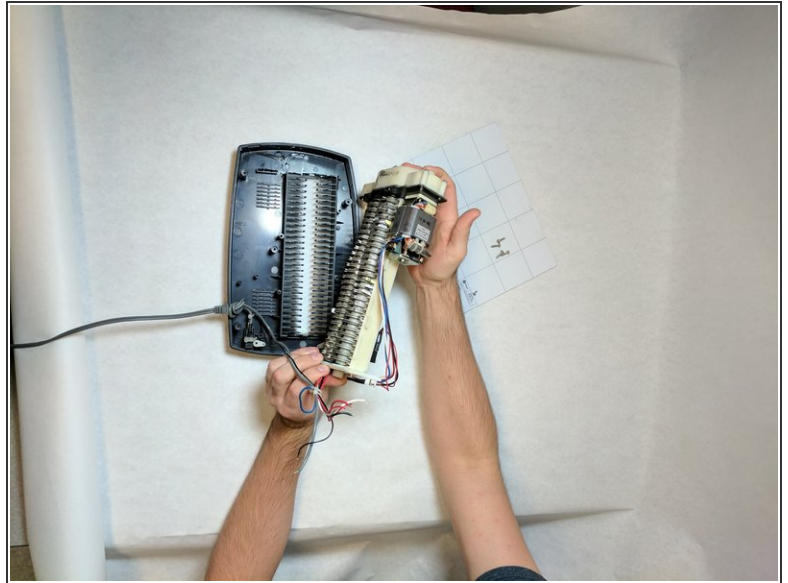
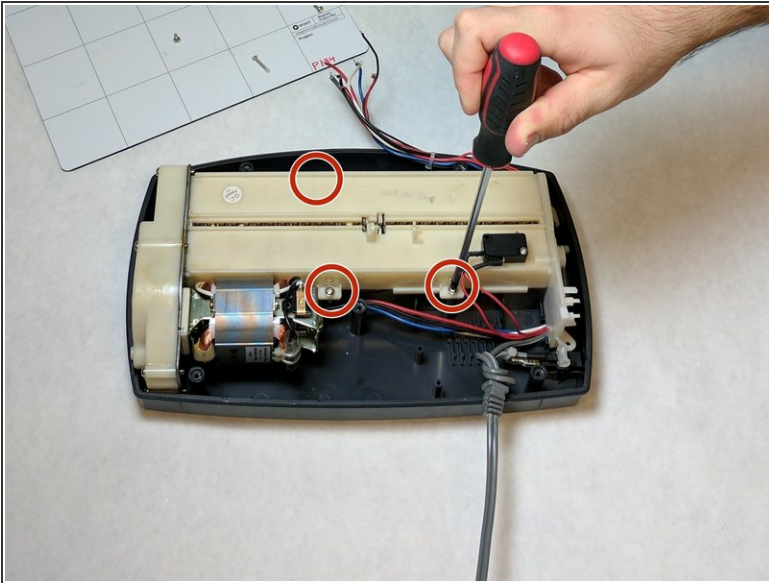
⚠ Use Caution during this procedure to prevent from damaging any of the internal parts.

Step 4



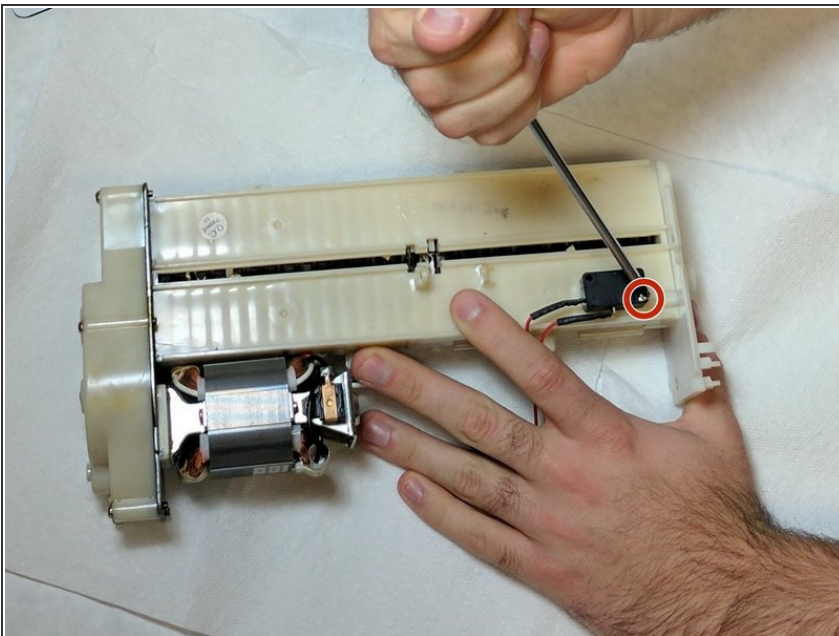
- Open the casing as shown to prevent tangling or damaging the wires.
- Take note to how the trigger assembly is attached before removal.
- The trigger assembly is one part and should come off all together with little to no force applied.
- Remove the trigger assembly.

Step 5 — Gear and Shaft



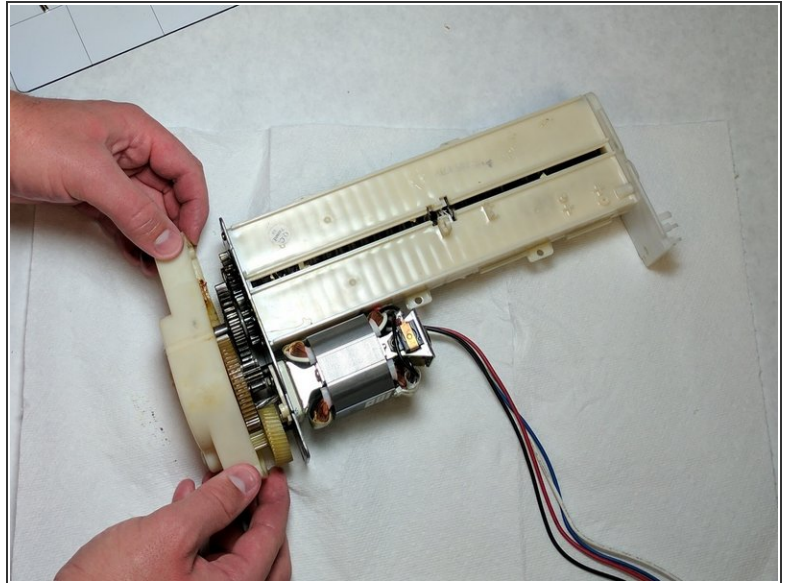
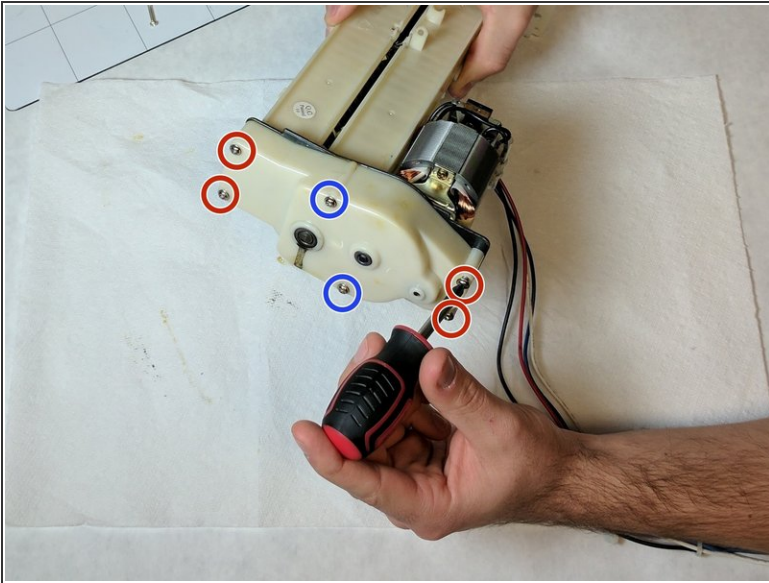
- Remove the three screws holding the internal case to the external case. The screw length is 18 mm and the head diameter is 5 mm.
- Remove the internal case.

Step 6



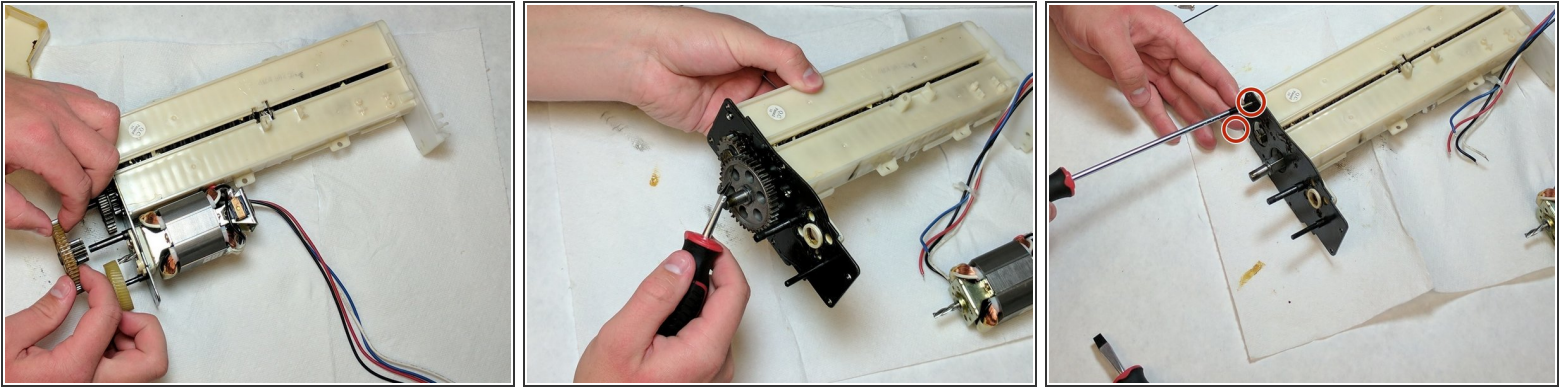
- Remove the feeding sensor by unscrewing the single screw holding it. The screw length is 10 mm and the head diameter is 6 mm.
- This step may be unnecessary, but it will prevent the sensor from being damaged.

Step 7



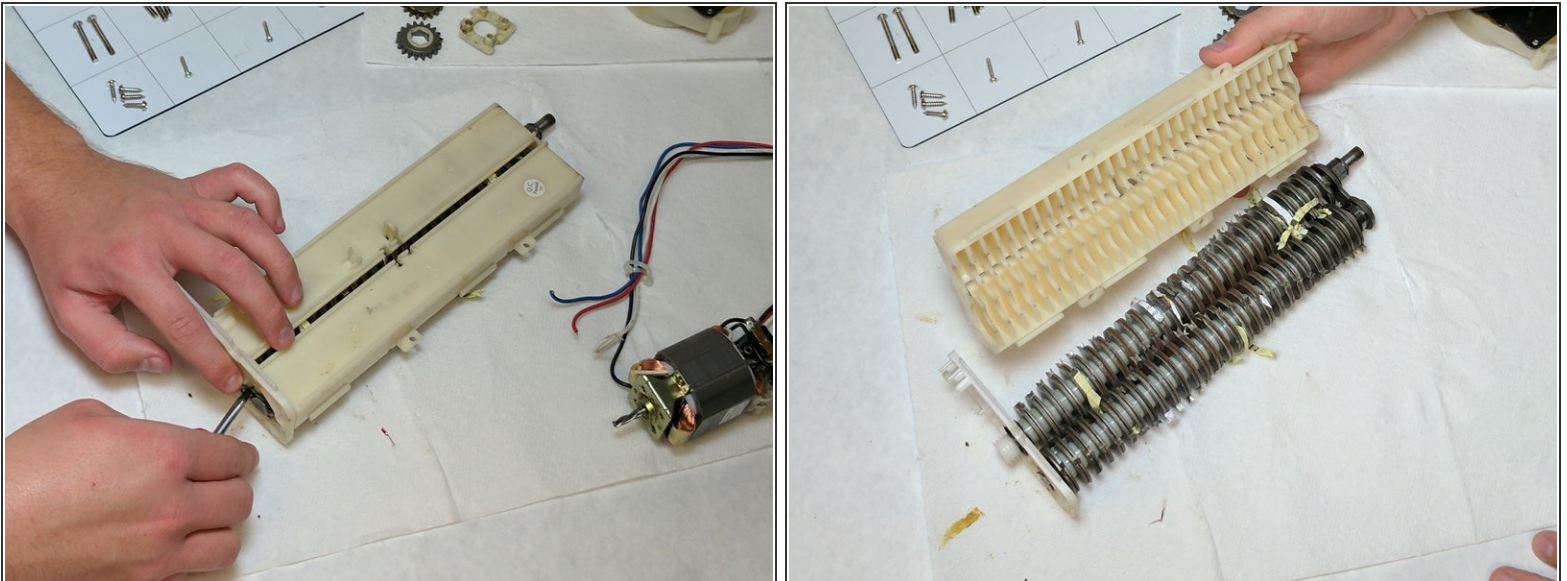
- Remove the six screws on the gearbox.
- Remove the gearbox cover to expose the gears.
- The screw length is 34 mm and the head diameter is 7 mm.
- The screw length is 26 mm and the head diameter is 7 mm.

Step 8



- Remove the gears.
- The larger gear located in the middle may require a screwdriver to pry off.
- Remove the gear holder by unscrewing two screws that are holding it in place. The screw length is 14 mm and the head diameter is 5 mm.

Step 9



- Remove the pin in order to pull the casing off of the shafts.
- Remove the casing in order to expose shafts.

To reassemble your device, follow these instructions in reverse order.