



# Dell Latitude E5500 Wireless Card Replacement

Replacement guide for the wireless card in a Dell Latitude E5500.

Written By: Richard Harrison



---

## INTRODUCTION

If the user would like to replace a faulty wireless card, or one that is not powerful enough, this guide will give step by step information on how to achieve this.

---

### TOOLS:

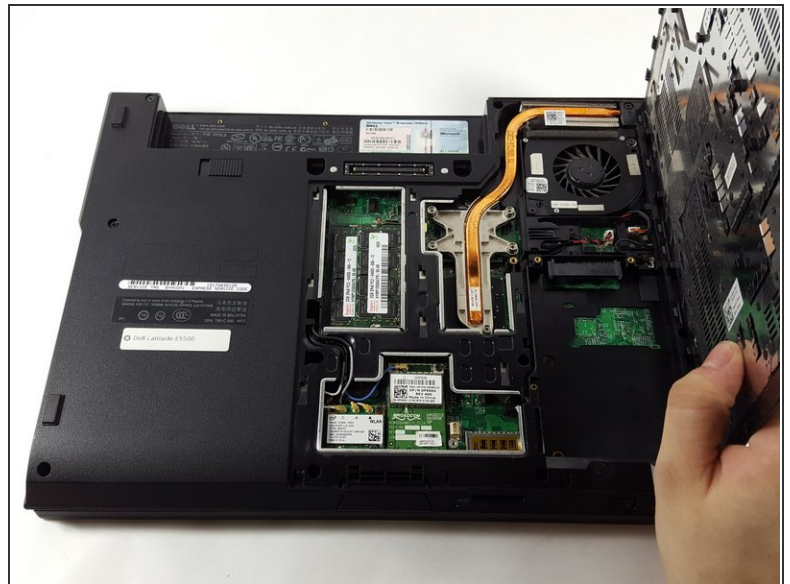
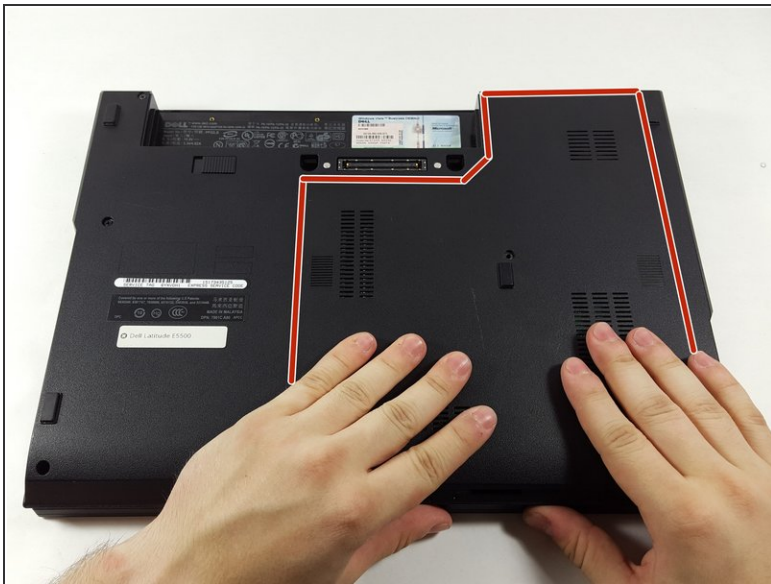
- [Phillips #1 Screwdriver](#) (1)
  - [Tweezers](#) (1)
-

## Step 1 — Wireless Card



- Unscrew the single 3.5mm Phillips #1 screw that holds on the bottom plate of the device.

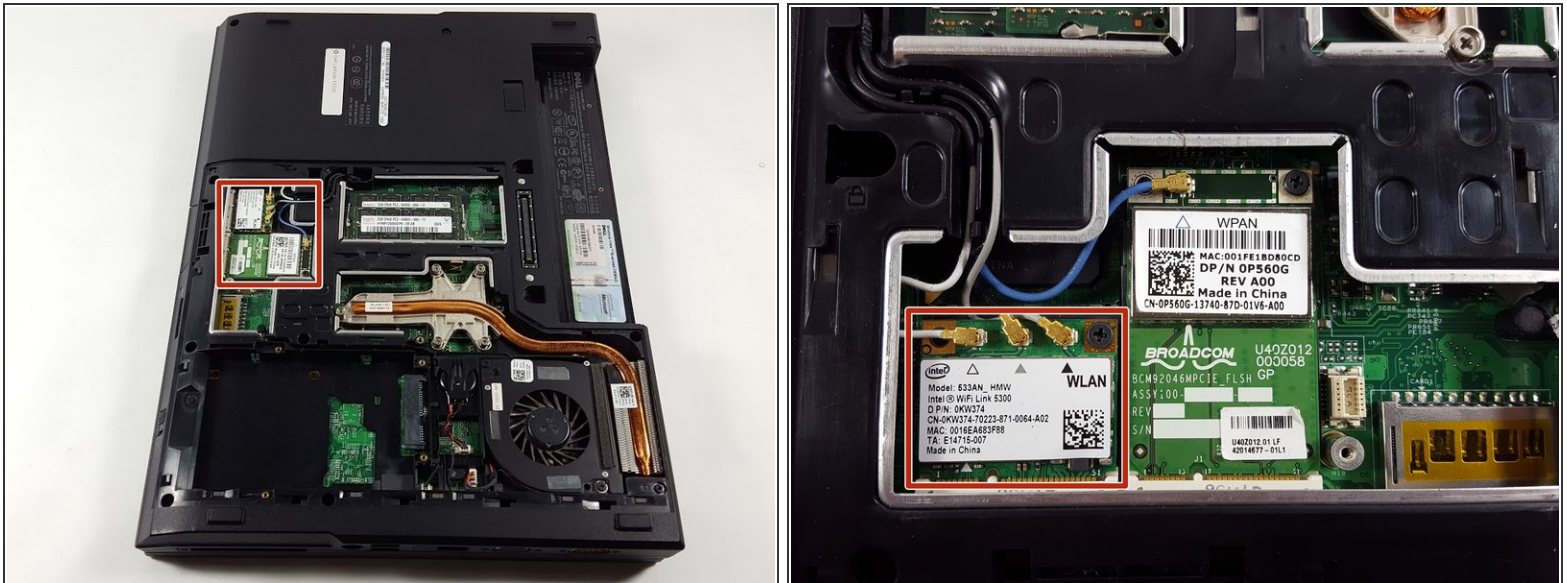
## Step 2



- Place your hands on the plate and pull it toward yourself.
- The plate will pop out of place and may then be removed.



## Step 3



- The wireless card is located near the front of the device, and is the expansion card with three antennas attached to it.

## Step 4



- Remove the wires connecting the card to the laptop with a pair of tweezers.

## Step 5



- Unscrew the 4mm Phillips #1 screw that secure the card in place.

## Step 6



**i** After completing steps 4 & 5, the card will lift up at an angle as shown.

- Once the card has popped out of place, it can be gently removed.

To reassemble your device, follow these instructions in reverse order.