



# IBM ThinkPad 600E Display Replacement

This guide will show you how to replace your...

Written By: Kevin Nguyen



# INTRODUCTION

This guide will show you how to replace your display from your laptop. You would need to replace it if you break your display.

---

## TOOLS:

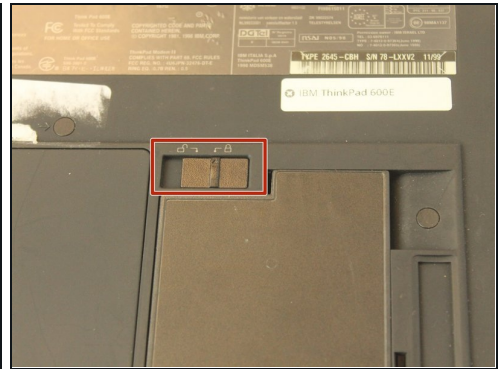
Anti-Static Wrist Strap (1)

Metal Spudger Set (1)

Phillips #00 Screwdriver (1)

---

## Step 1 — Battery



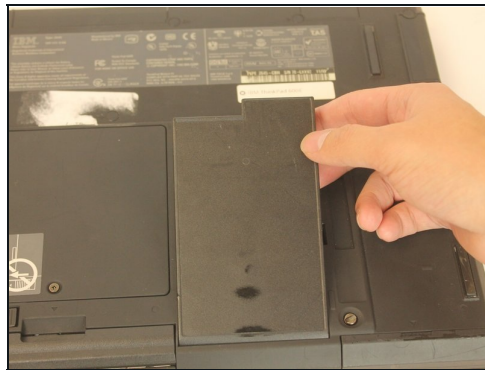
- Flip the laptop over and find the battery latch.

## Step 2



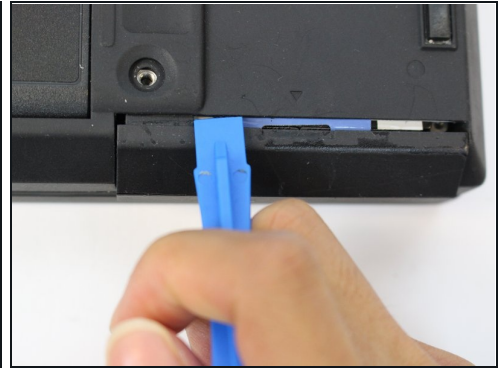
- Move the latch to the side with the unlocked symbol.

## Step 3



- Pry the battery out using your fingers.

## Step 4 — Keyboard



⚠ Use an [antistatic wrist strap](#) to avoid the risk of electric shock.

- Unscrew the coin screw for the hard drive using a coin. Pry off the HDD cover.
- ① It is easier to remove the coin screw using a thicker coin, such as a nickel.

## Step 5



- Unlock the highlighted latch and pull the disk drive out.
- Remove the disk drive.



## Step 6



① Most of the screws have a small, plastic covering attached with an adhesive. Use the metal spudger to pry it off. Make sure to note which screw came from which hole.

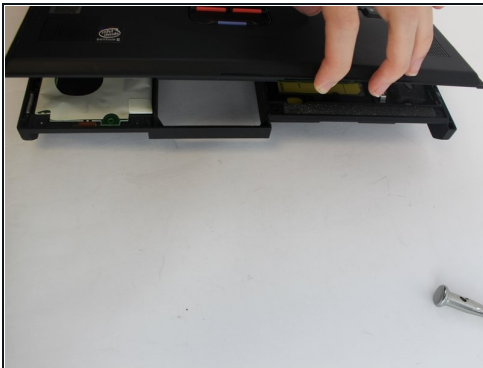
- Four 18mm long M2.5 screws
- Two 16mm long M2.5 screws
- One 4.5mm long M2.5 screws
- Four 3mm long M2.5 screws

## Step 7



- Open the laptop all the way until it is flat.
- Take the black circle off and remove the screw.
- One 4.5mm long M2.5 screw

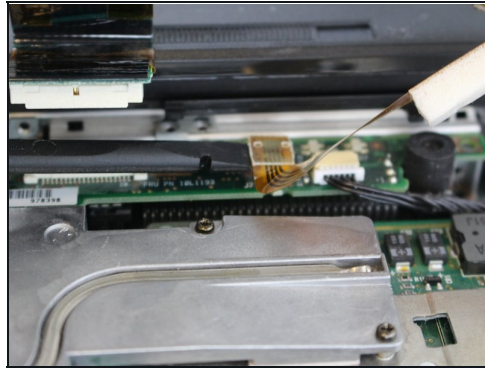
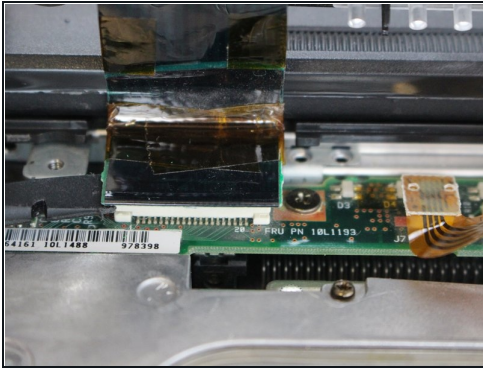
## Step 8



- Pry the keyboard case up from the bottom and gently pry it up from all other edges.

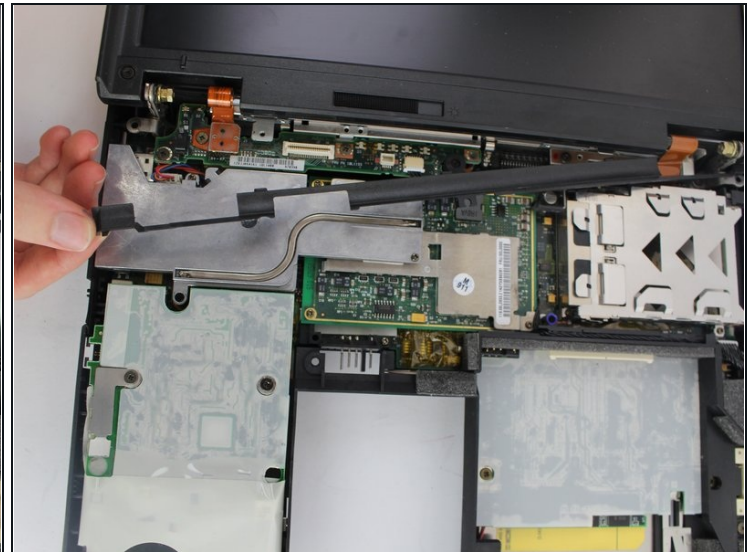
⚠ Use caution when opening the case, as there are two ribbon cables attached to the keyboard case.

## Step 9



- Pry the connectors of the ribbon cables off slowly, lifting straight up. Wiggle gently side to side if necessary.

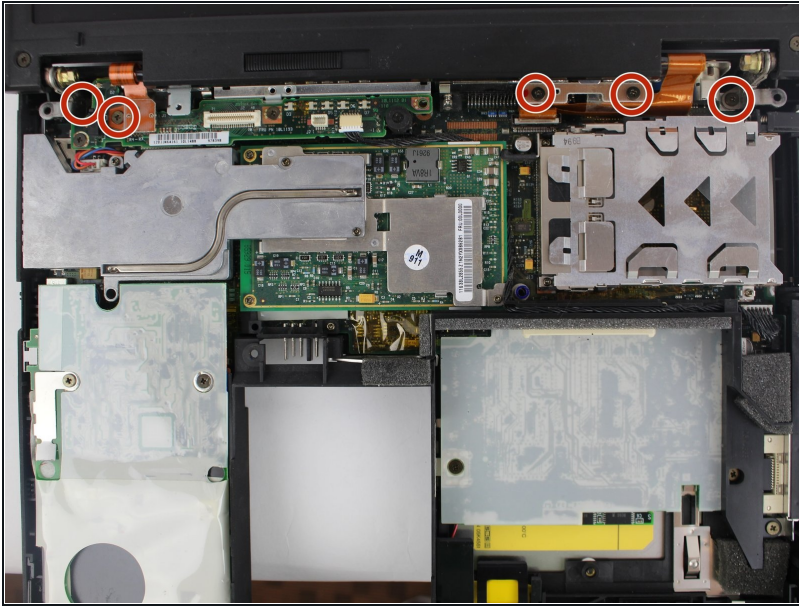
## Step 10 — Display



- Remove the plastic part attached to the bottom of the screen.
- Gently pull it from one side and then from another.



## Step 11



- Remove the highlighted screws.
- Five 4.8mm long M2.5 screws

## Step 12



- Pry the connectors of the ribbon cables off slowly, lifting straight up. Wiggle gently side to side if necessary.



## Step 13



- Close the laptop and turn it around. There you will see 4 more screws.
- Unscrew highlighted screws.
- Four 4.8mm long M2.5 screws

## Step 14



- After you've removed the screws, open the laptop and gently pull the display out.

⚠ Be sure you hold it from the bottom edges while taking it out.

To reassemble your device, follow these instructions in reverse order.