



# Dell Inspiron 11z-1121 Hard Drive Replacement

This guide will go through the steps needed to replace the hard drive.

Written By: Brandon Eng



---

## INTRODUCTION

The hard drive is one of the most important components to any computer or laptop because without one, the laptop cannot turn on. Some times the hard drive may become full or corrupted, which may cause the device to slow down or become unresponsive. This guide teaches you how to replace it, and will utilize the steps from the keyboard replacement guide to do so.



### TOOLS:

- [iFixit Opening Tools](#) (1)
  - [Phillips #0 Screwdriver](#) (1)
  - [Phillips #1 Screwdriver](#) (1)
-

## Step 1 — Battery



- Slide the latches outward to release the battery.
  - Pull the battery outward to remove.
- i** The latches should lock in place, allowing for easy removal.
- !** The battery must be removed for safety reasons when replacing other components of the laptop.

## Step 2 — Keyboard



- Unscrew three black 1mm screws using the PH1 Phillips-head screwdriver on the bottom of the laptop around the battery.

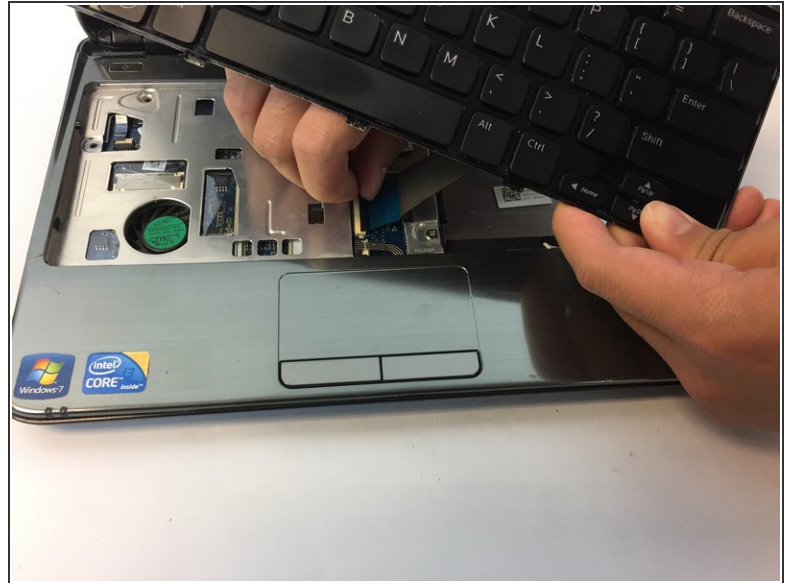
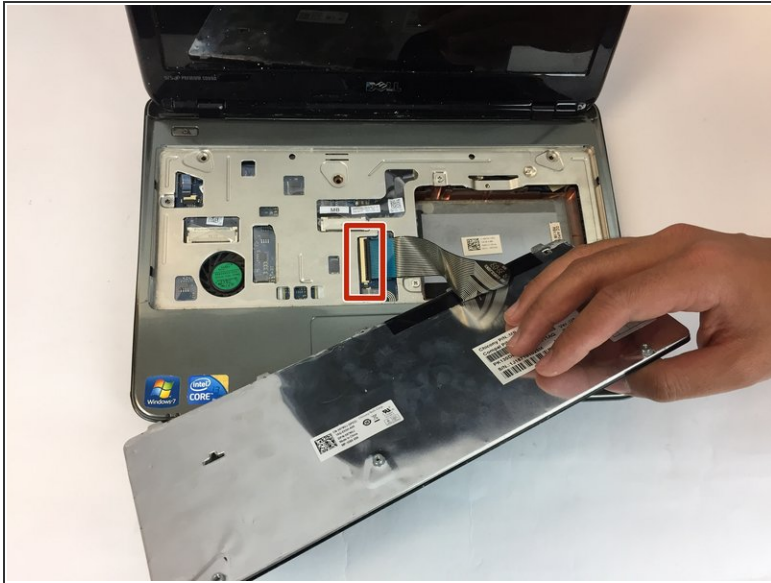
## Step 3



- Flip the laptop over and open it to expose the keyboard.
  - Use a plastic opening tool to pry up the keyboard, starting in the upper corner and working your way around.
- ⚠ Once the keyboard is pried up, do not remove the keyboard. There is still a ribbon attaching the keyboard to the laptop.

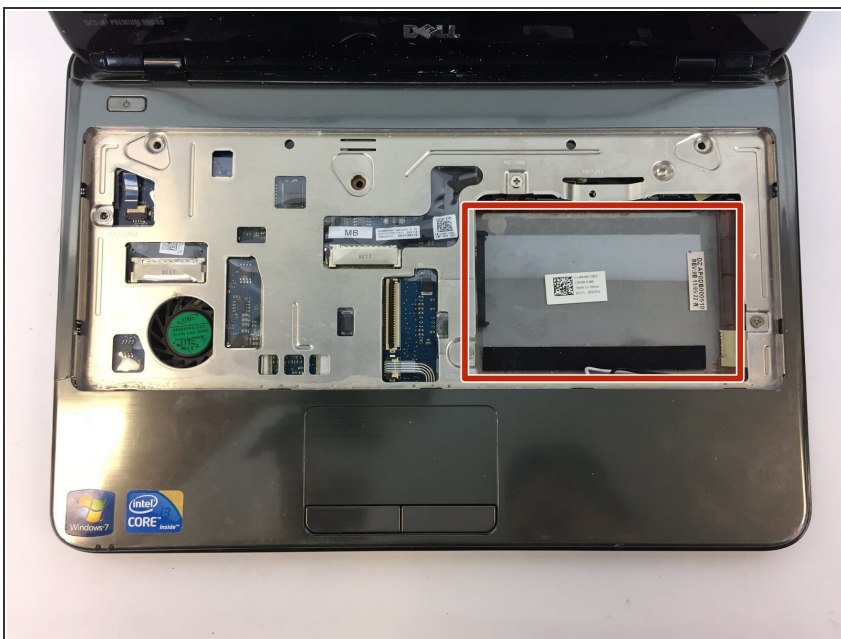


## Step 4



- Lift the keyboard to expose the ribbon attaching the keyboard to the laptop.
- Flip up the black retaining flap on the ZIF connector and then pull the ribbon cable away.
- Remove the keyboard from the laptop.

## Step 5 — Hard Drive



- The hard drive will be a silver rectangle. Slide the hard drive to the right to remove.
- ⓘ To be safe, make sure you either wear an anti-static wrist band, or rub your hands against a metal object to remove any static.

To reassemble your device, follow these instructions in reverse order.