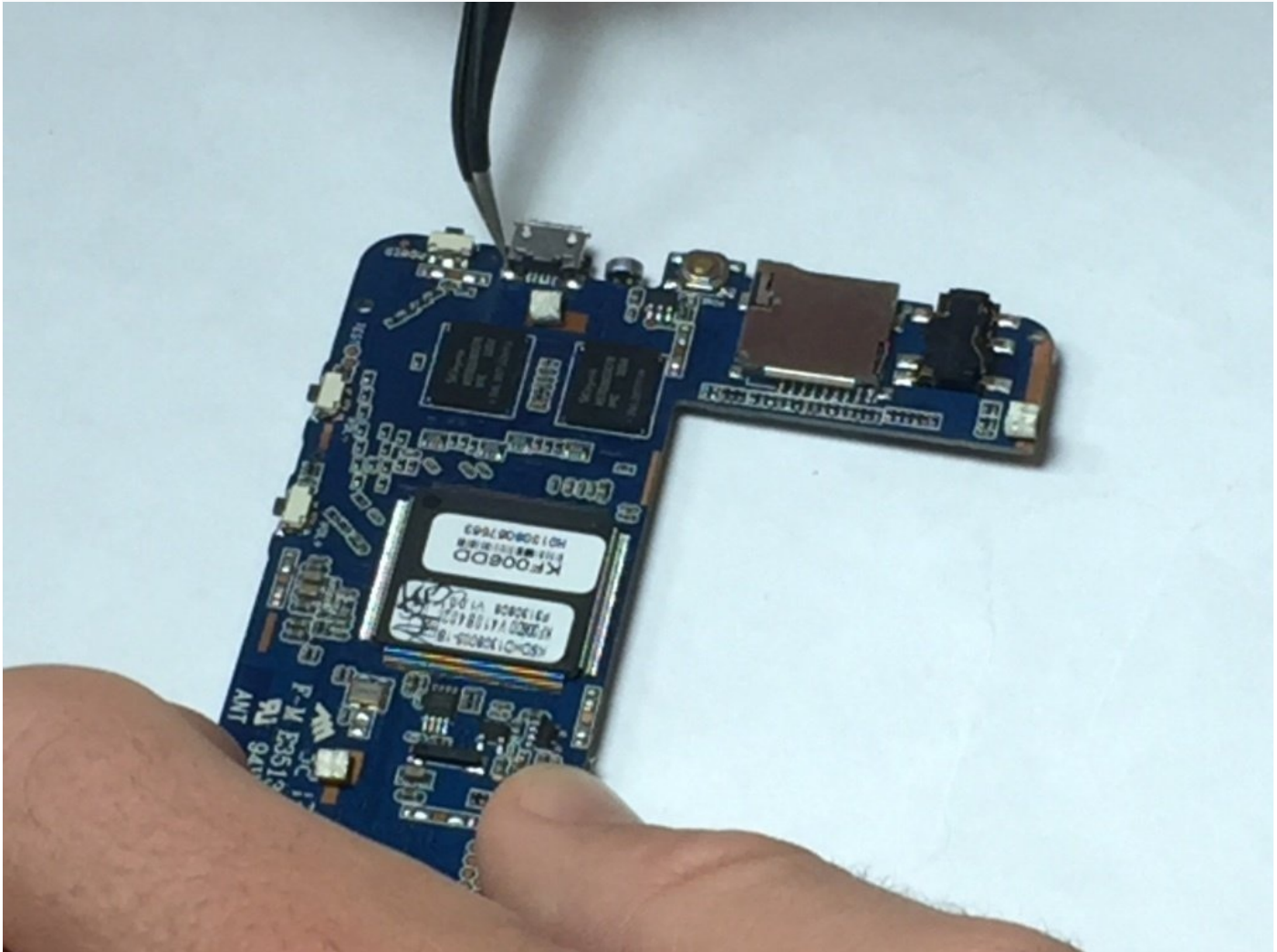




Polaroid PMID4312 Charging Port Replacement

Charging port is very important for every...

Written By: Christopher Bertan



INTRODUCTION

Charging port is very important for every device. If you don't fix it on time, the device won't turn on anymore.

TOOLS:

[Plastic Cards](#) (1)

[Phillips #00 Screwdriver](#) (1)

[Tweezers](#) (1)

[Soldering Iron](#) (1)

[iFixit Opening Tool](#) (1)

Step 1 — Battery



- Pry the seam between the screen and the case and slide it on all four sides with a large plastic opening tool until the plastic case comes off.

Step 2



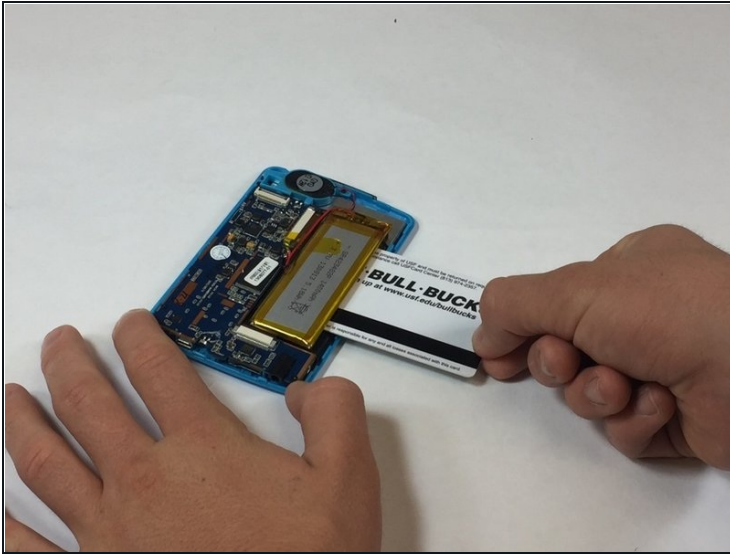
- Lift the device off of the case and flip over the device so that it sits screen side down.

Step 3



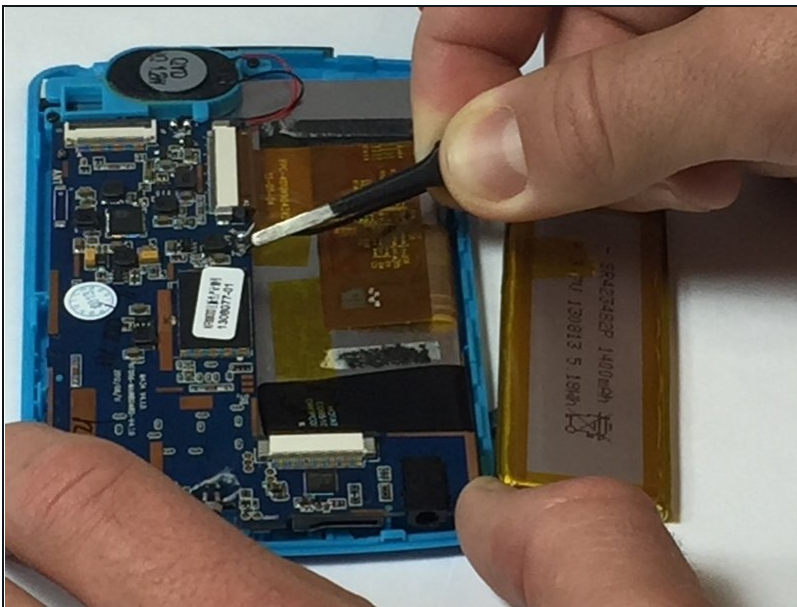
- The device is now free from the plastic case.

Step 4



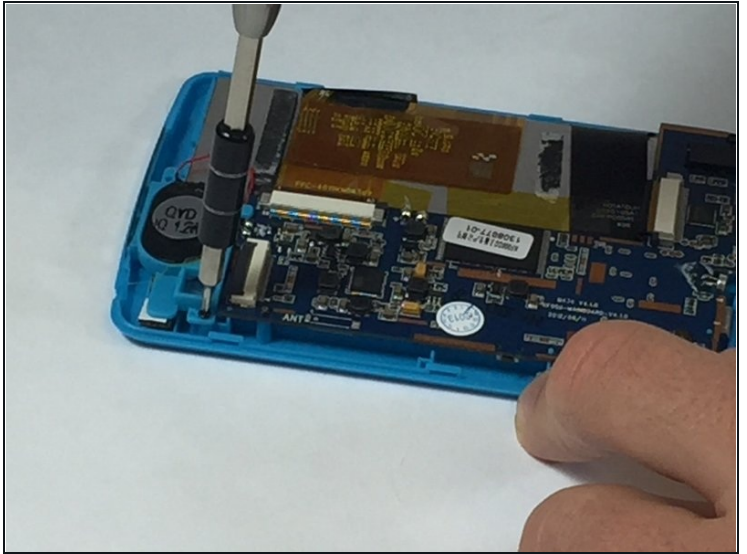
- Wedge a [plastic card](#) beneath the battery unit and wiggle the card side to side and up and down gently until the glue sealing the battery to the device is broken.

Step 5



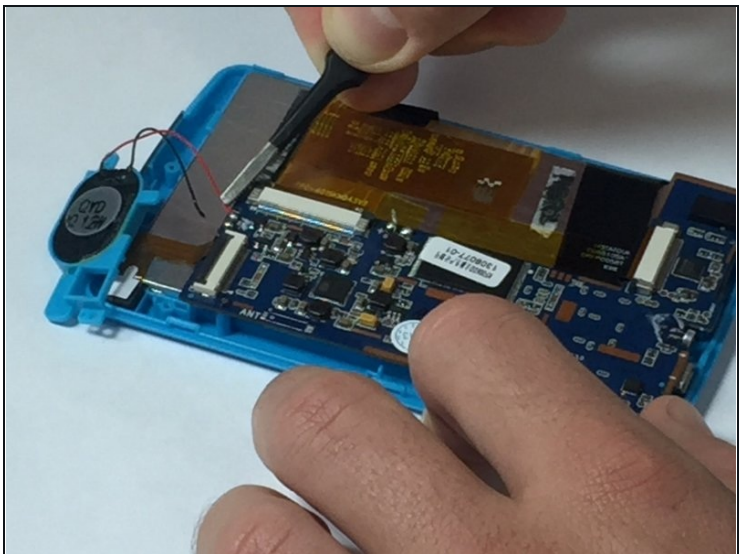
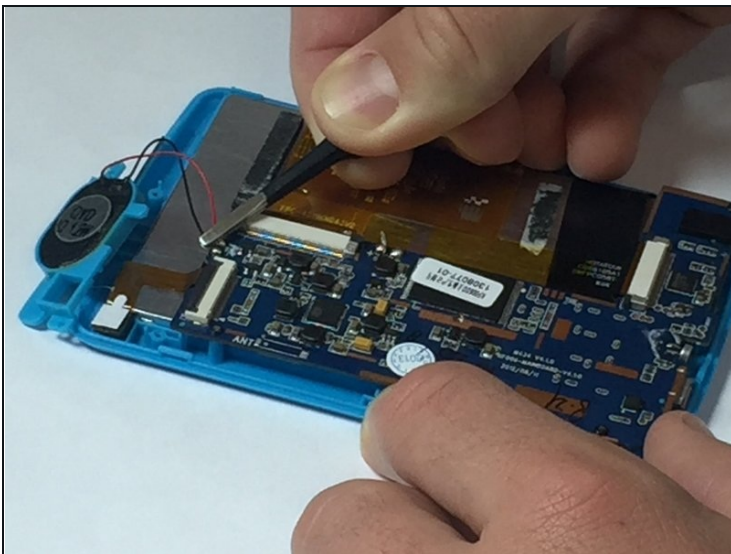
- Peel back any yellow tape not directly attached to the battery.
- Using a soldering iron, desolder the two wires that connect the battery to the motherboard.

Step 6 — Speaker



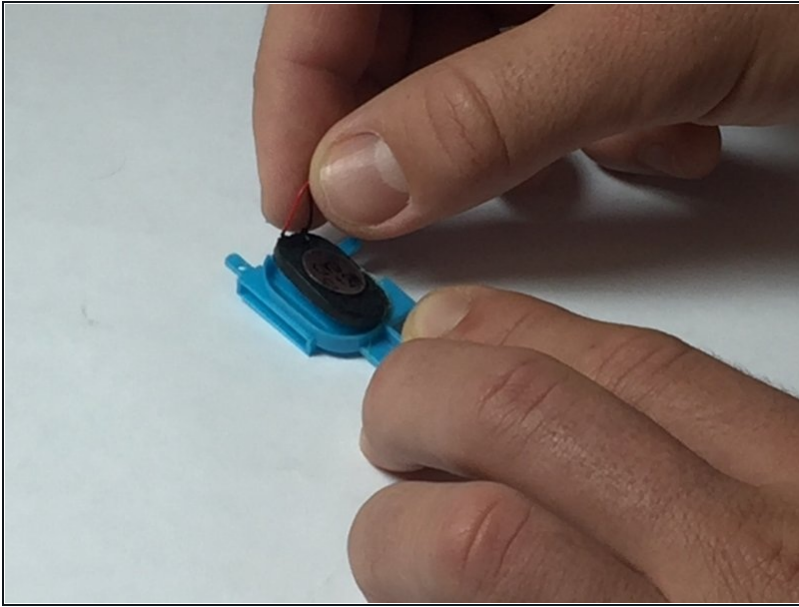
- Remove the two 5mm screws attached to the top right and bottom left corners of the speaker

Step 7



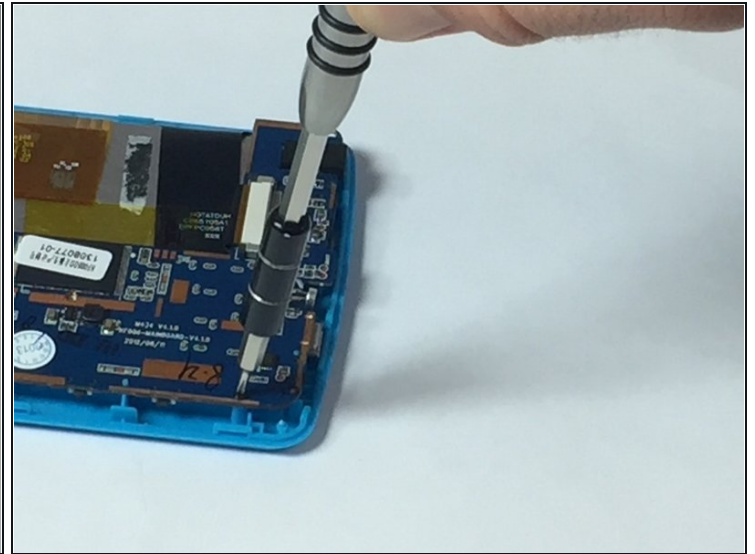
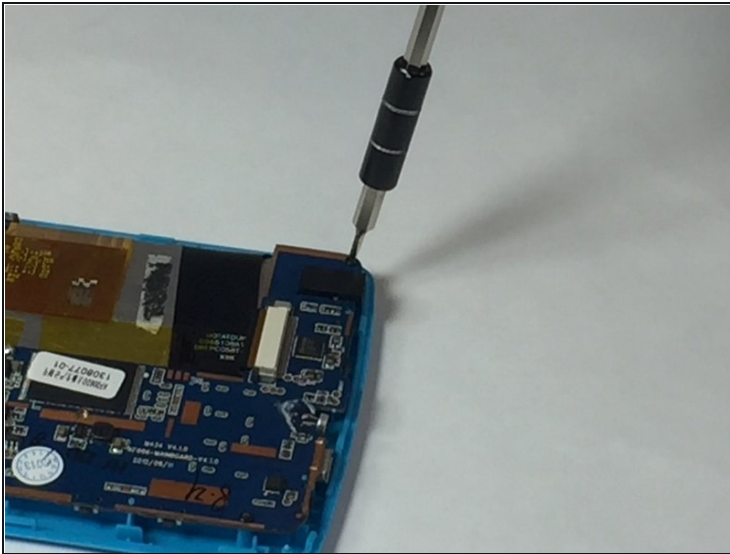
- Solder off the wires connecting the speaker to the device

Step 8



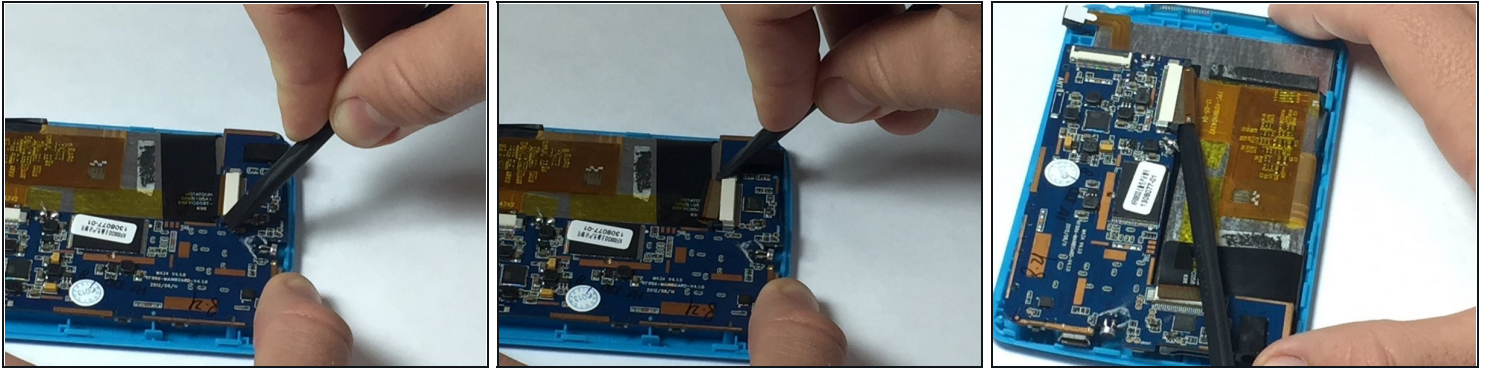
- Pull the speaker out of the casing to release it.

Step 9 — Motherboard



- Using the ph#00 screwdriver, remove the four 5mm screws connecting the motherboard to the casing.

Step 10

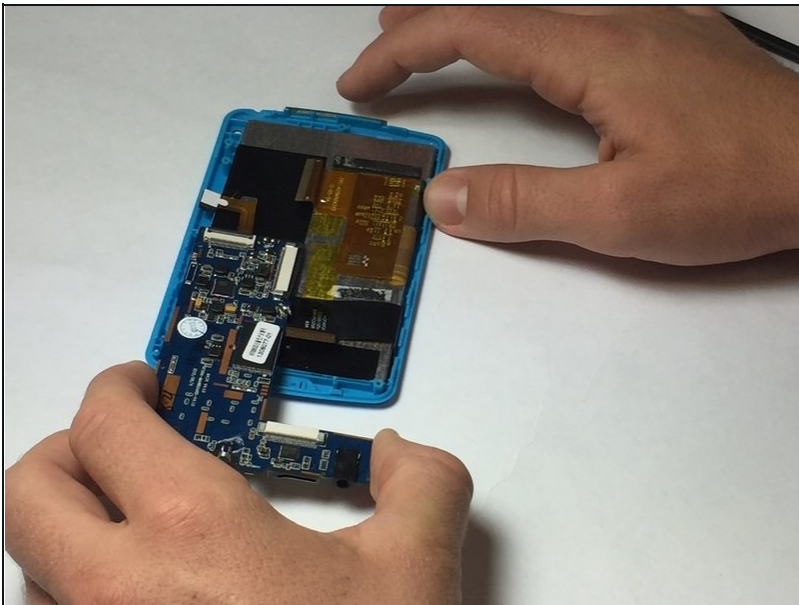


- Using a spudger or a fingernail, detach the two ribbons from the motherboard by pushing the plastic tab away from the Zero Insertion Force connectors.

ⓘ As the name implies, no force is needed to plug in or remove the cable.

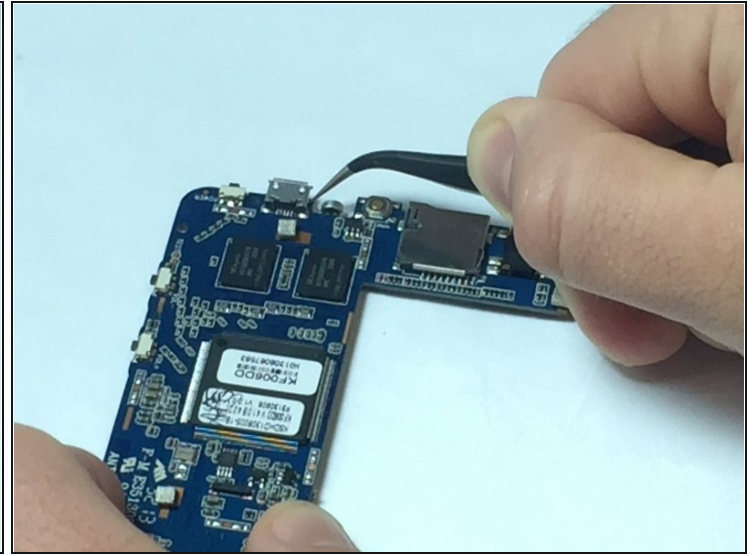
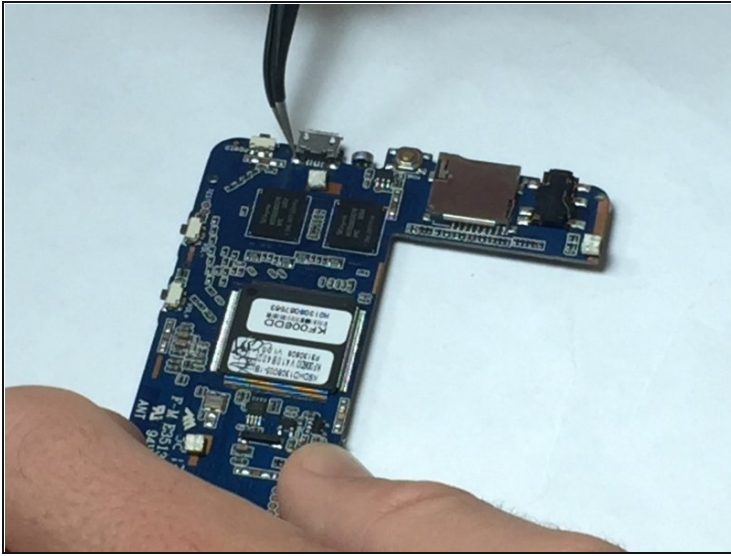
⚠ Be sure you are prying the plastic tabs connected tab and not the connector itself.

Step 11



- Now carefully remove the motherboard.

Step 12 — Charging port



- Desolder each side of the USB port where it is attached to the motherboard.
 - The USB port will now be loosened from the motherboard.
 - Using tweezers, pull the USB port straight out from the motherboard without wiggling it up, down, or side to side.
 - The USB port is now replaceable.
-

To reassemble your device, follow these instructions in reverse order.