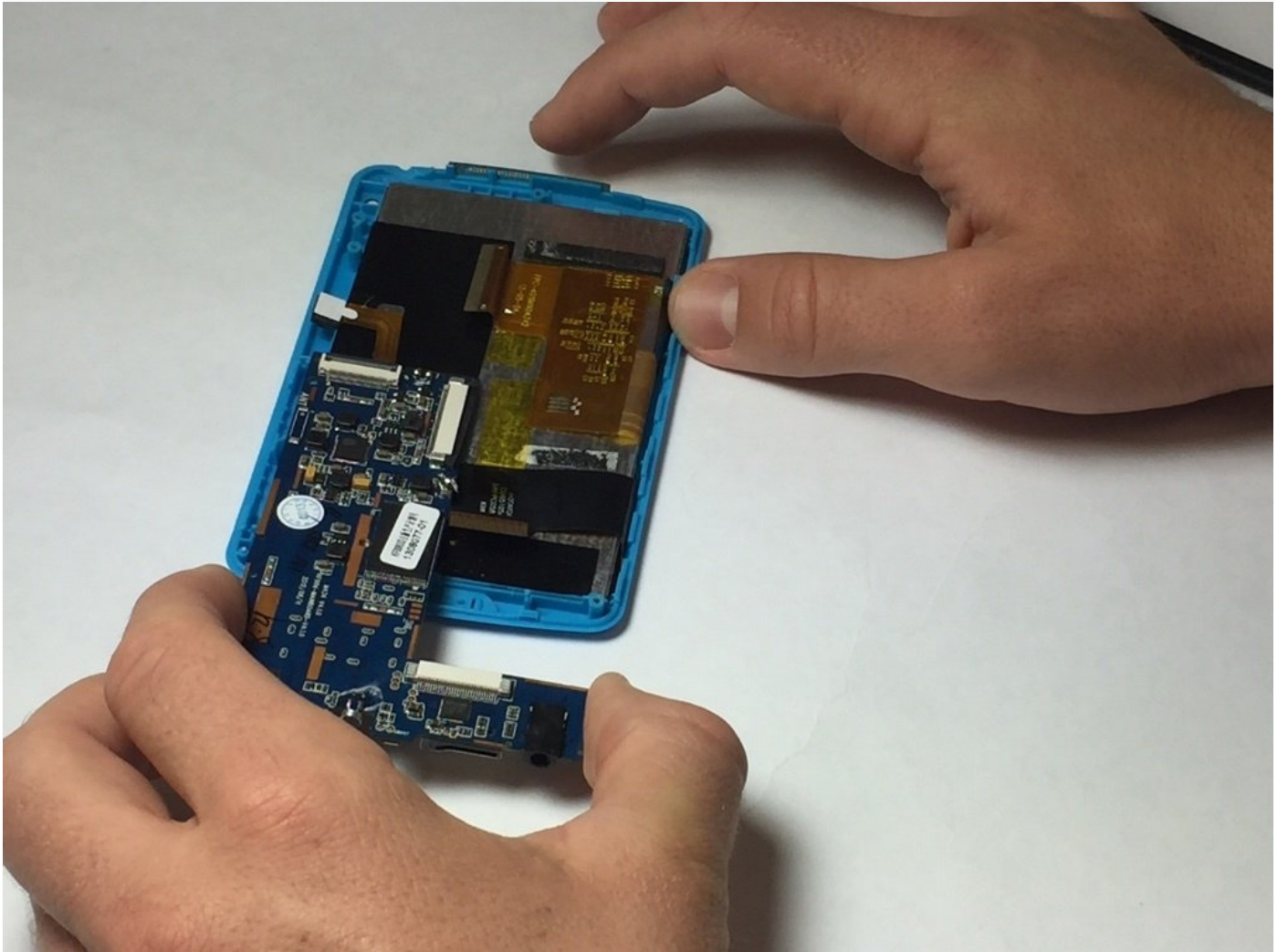




# Polaroid PMID4312 Motherboard Replacement

The motherboard contains most of the electrical...

Written By: Christopher Bertan



# INTRODUCTION

The motherboard contains most of the electrical components of the device. It is a delicate piece of hardware but can easily be removed.

---

## TOOLS:

[Plastic Cards](#) (1)

[Phillips #00 Screwdriver](#) (1)

[Tweezers](#) (1)

[Soldering Iron 60w Hakko 503F](#) (1)

[iFixit Opening Tool](#) (1)

---

## Step 1 — Battery



- Pry the seam between the screen and the case and slide it on all four sides with a large plastic opening tool until the plastic case comes off.

## Step 2



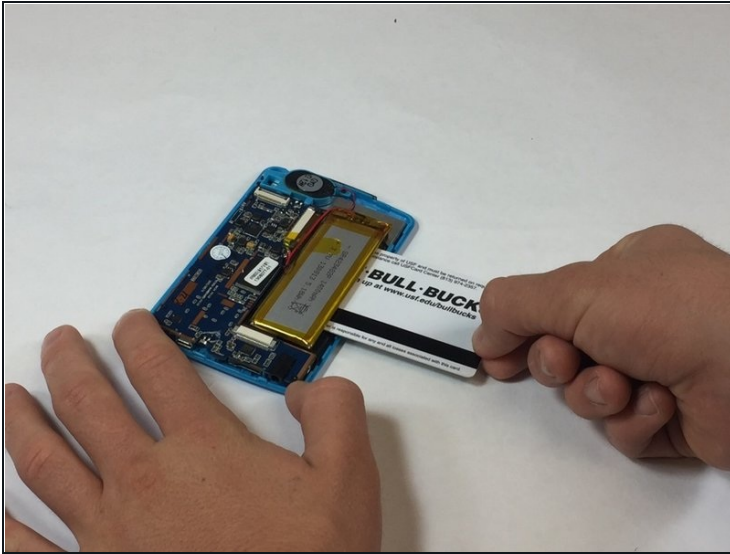
- Lift the device off of the case and flip over the device so that it sits screen side down.

## Step 3



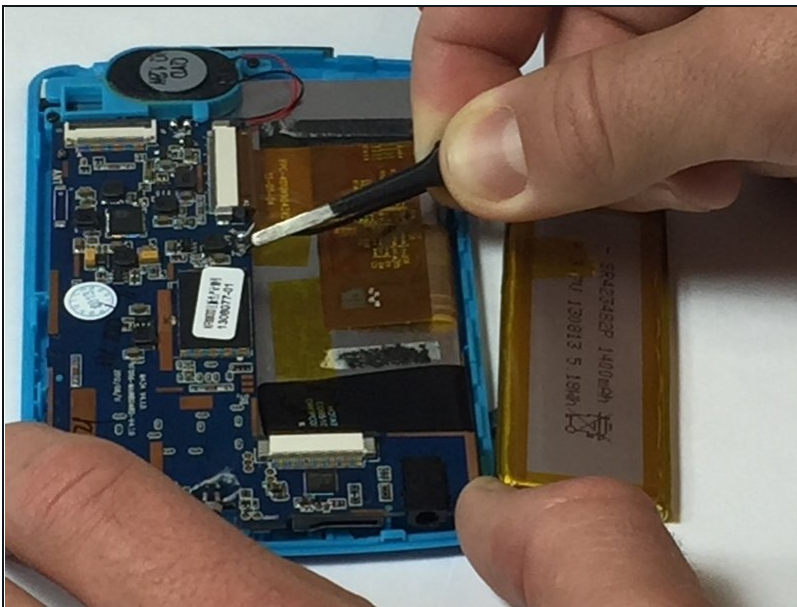
- The device is now free from the plastic case.

## Step 4



- Wedge a [plastic card](#) beneath the battery unit and wiggle the card side to side and up and down gently until the glue sealing the battery to the device is broken.

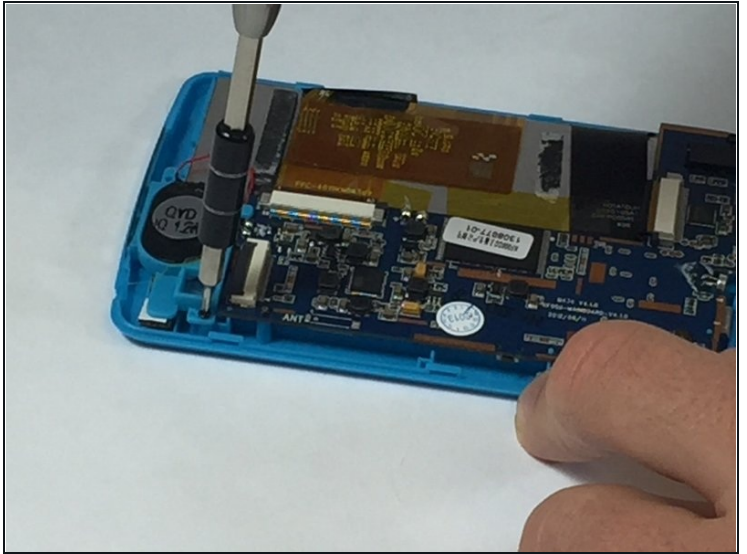
## Step 5



- Peel back any yellow tape not directly attached to the battery.
- Using a soldering iron, desolder the two wires that connect the battery to the motherboard.

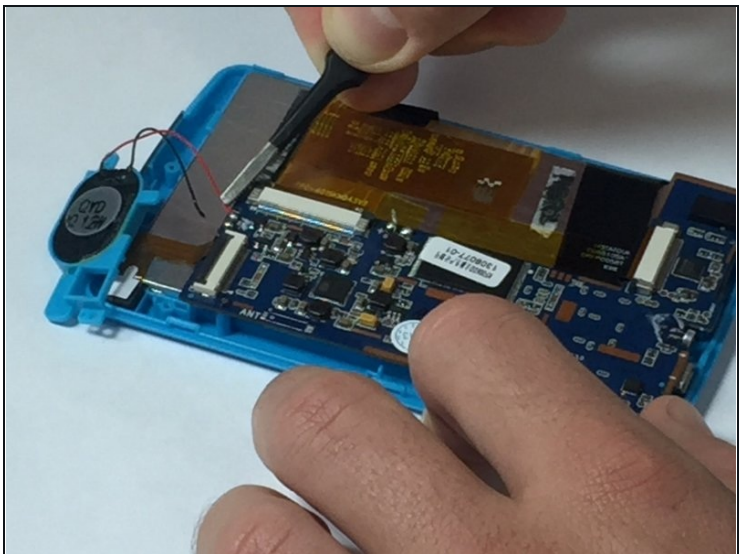
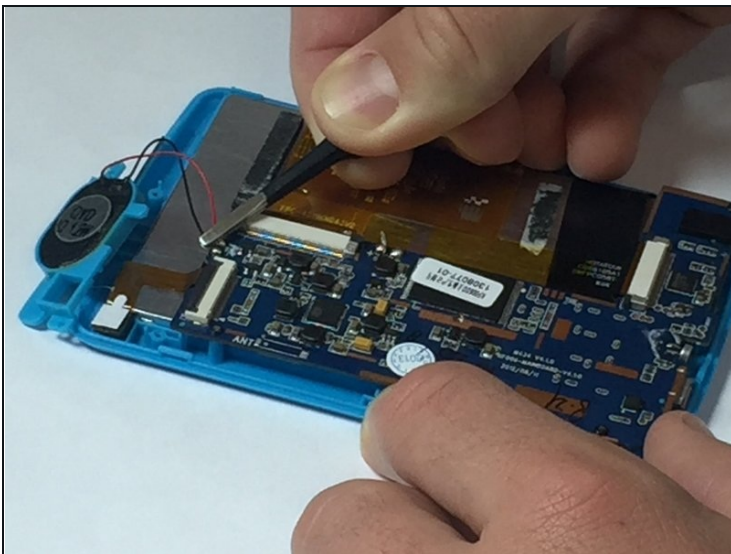


## Step 6 — Speaker



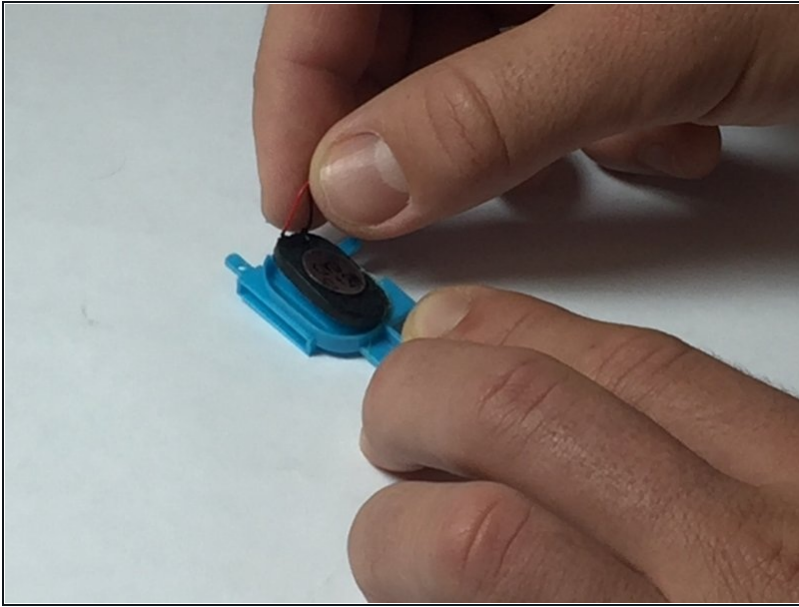
- Remove the two 5mm screws attached to the top right and bottom left corners of the speaker

## Step 7



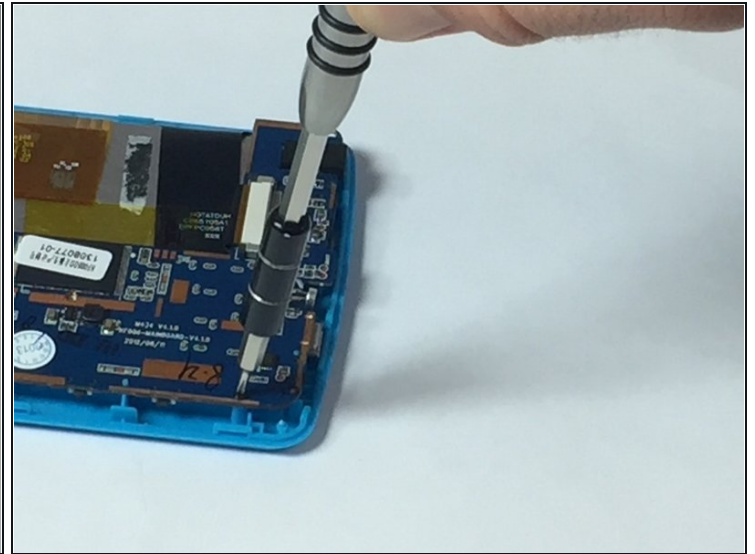
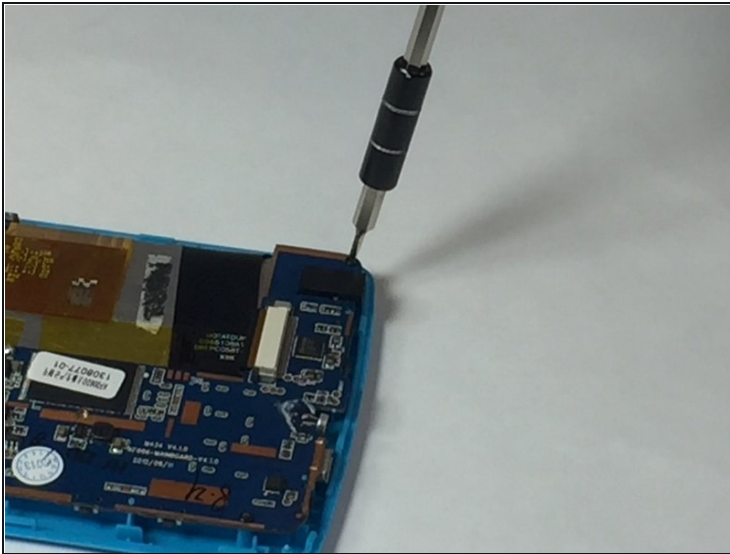
- Solder off the wires connecting the speaker to the device

## Step 8



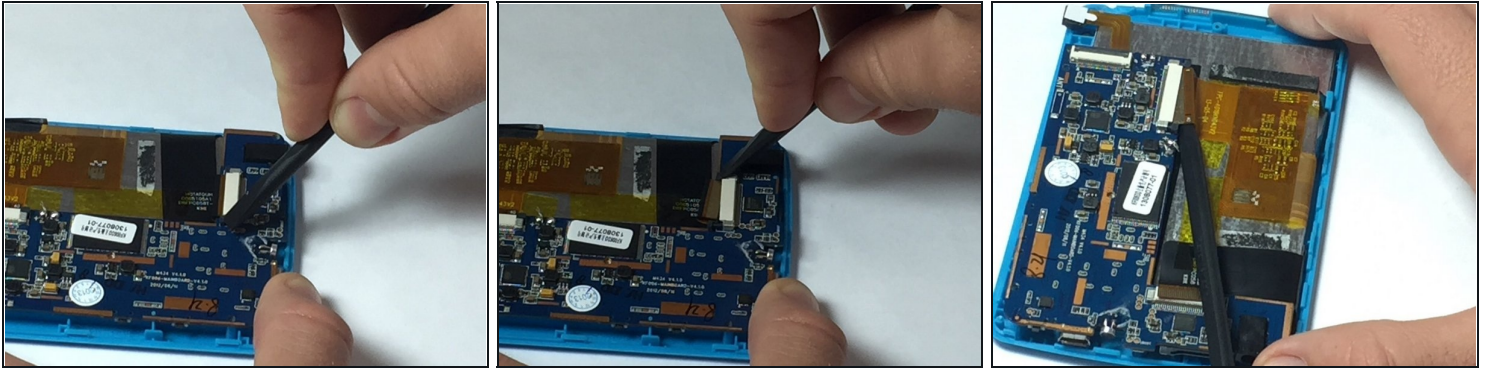
- Pull the speaker out of the casing to release it.

## Step 9 — Motherboard



- Using the ph#00 screwdriver, remove the four 5mm screws connecting the motherboard to the casing.

## Step 10

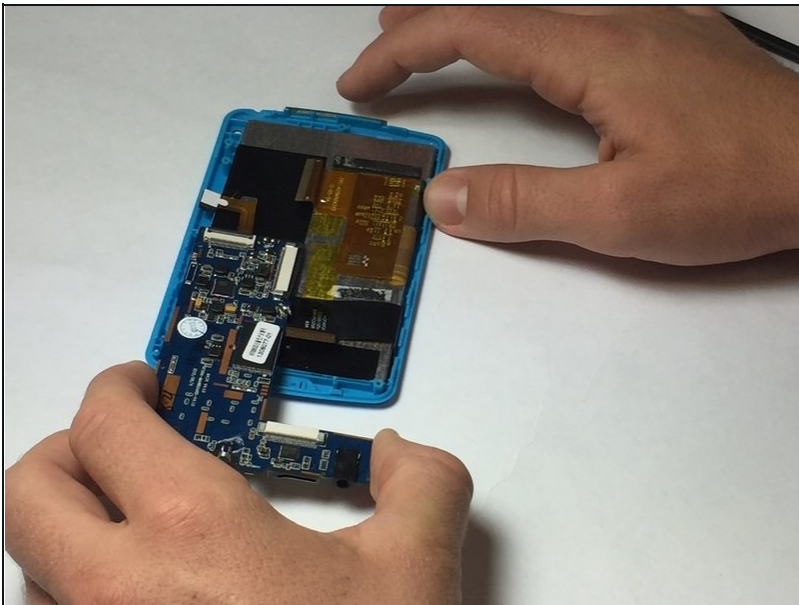


- Using a spudger or a fingernail, detach the two ribbons from the motherboard by pushing the plastic tab away from the Zero Insertion Force connectors.

① As the name implies, no force is needed to plug in or remove the cable.

⚠ Be sure you are prying the plastic tabs connected tab and not the connector itself.

## Step 11



- Now carefully remove the motherboard.

To reassemble your device, follow these instructions in reverse order.