



Hot Tools HPK12 Heating Plate Replacement

This guide will help you replace both heating plates for your Hot Tools HPK12.

Written By: Nathan Schwartz



INTRODUCTION

This guide will show you how to replace the hot plates on your HPK12. Do not begin working on your device without unplugging it from the wall.

TOOLS:

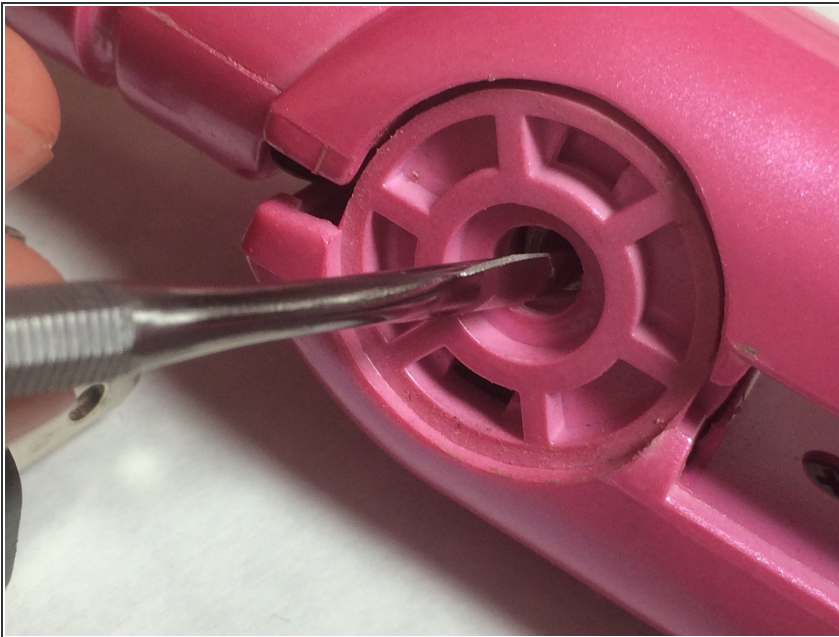
- [Phillips #0 Screwdriver](#) (1)
-

Step 1 — Prerequisite Only



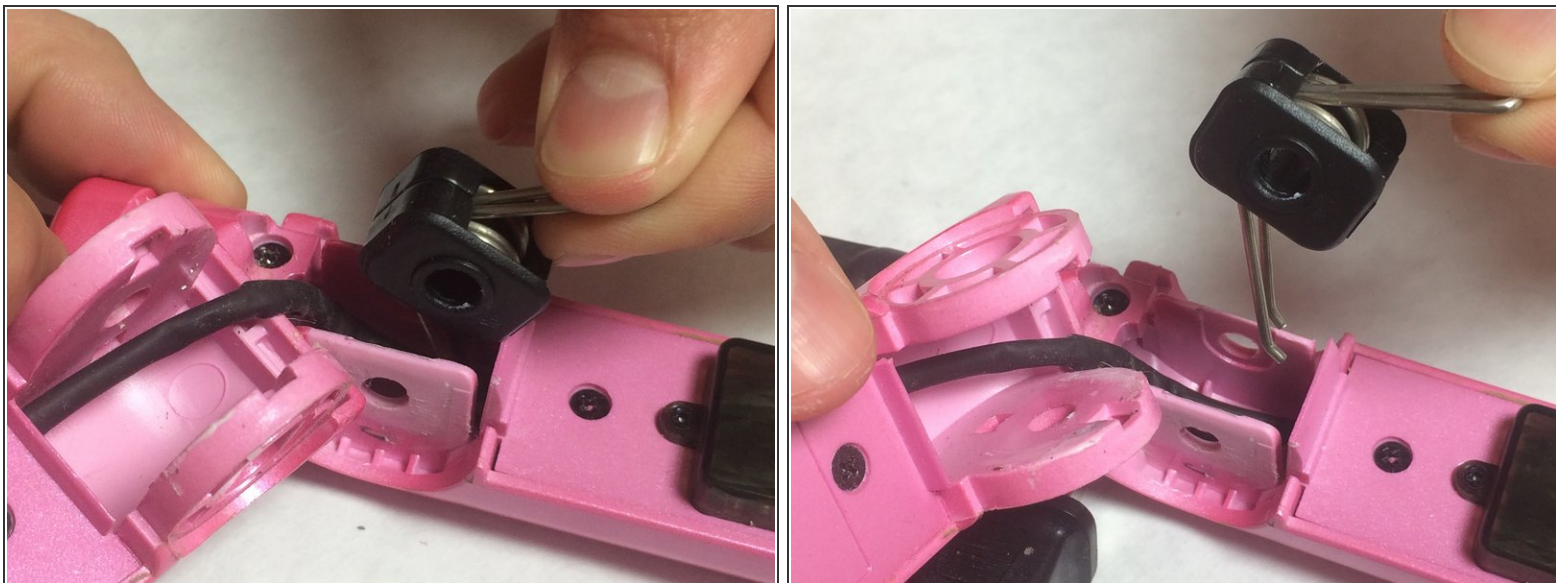
- Remove round plastic cover near cord base by prying under the side with the metal spudger.
- Flip the device and remove the other round plastic cover near the base of the cord.
- Use the Phillips #1 screwdriver to remove the 5.5mm PH1 screw and washer under the plastic cover and set both aside.

Step 2




- Use the metal spudger to push the center pin through to the other side.


Step 3



- Lift back plastic cover to expose spring assembly.

 Be careful not to damage the power cord by bending or twisting it too much while performing this step.

- Grip the exposed end of the spring assembly and remove it.

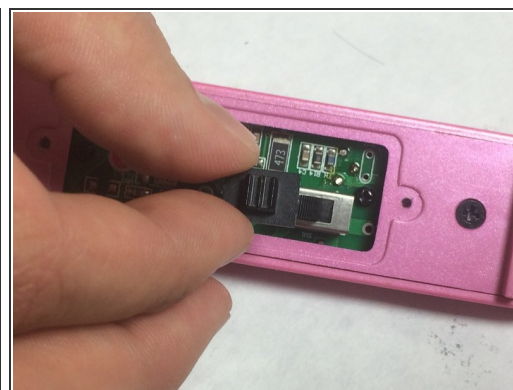
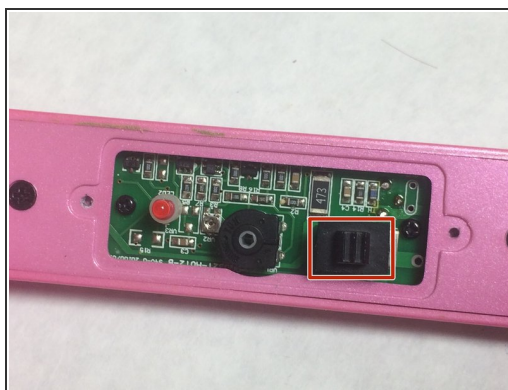
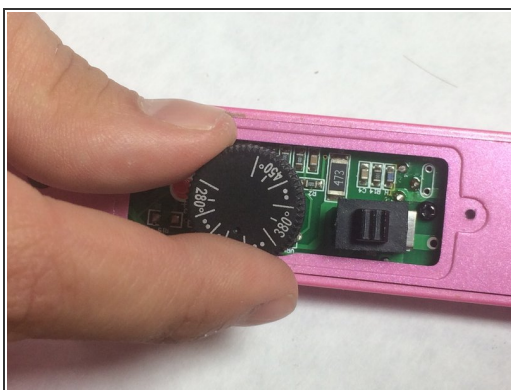
 The side with the two ends of the spring goes into the recessed area of the iron

Step 4



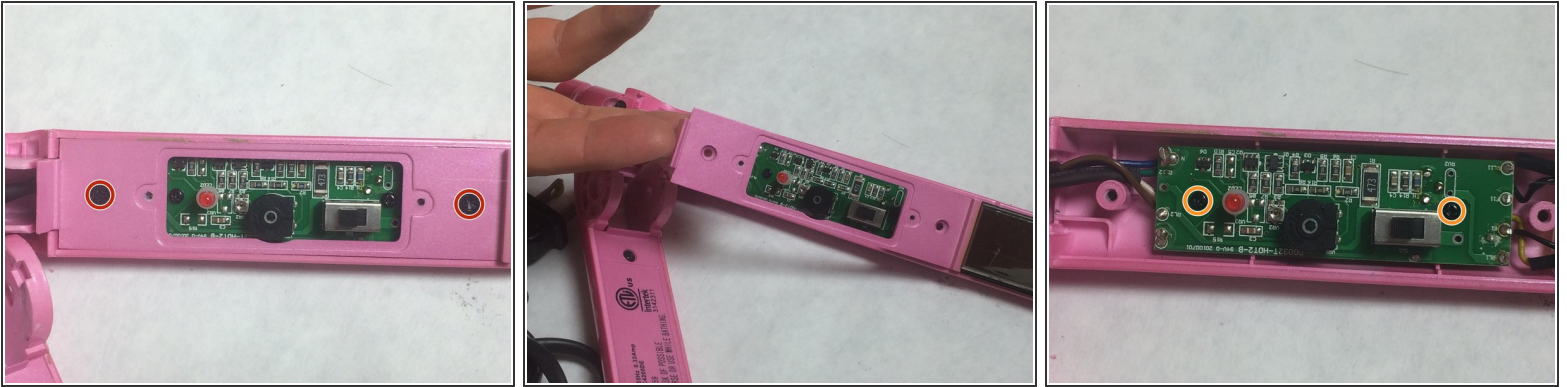
- Use the JIS #0 screwdriver to remove the two 3.5mm “J0” screws that attach the control assembly cover to the flat iron base.

Step 5



- Lift upward on the control assembly cover to remove it from the flat iron base.
- Remove dial and switch cover and set aside.

Step 6



- Use your JIS #0 screw driver to remove the two 6mm “J0” screws that are attached to the flat iron base and set them aside.
- Lift the backing plate upwards to remove it from the flat iron.
- Use the Phillips #0 screwdriver to remove two 4mm “PH0” screws that attach the circuit assembly to the flat iron base.

Step 7 — Heating Plates



- Lift plate and circuit assembly away from flat iron case.

Step 8



- Flip device to access the non-control assembly flat iron arm and remove two 3.5mm “J0” screws that attaches cover to flat iron base.

Step 9



- Lift cover from flat iron case.

Step 10



- Lift heating plate away from flat iron case.

To reassemble your device, follow these instructions in reverse order.