



# Sony Tablet S Rear Camera Replacement

This guide demonstrates how to replace a faulty rear-facing camera.

Written By: Austin Mann






## TOOLS:

- [Phillips #0 Screwdriver](#) (1)
  - [Spudger](#) (1)
  - [iFixit Opening Tools](#) (1)
-

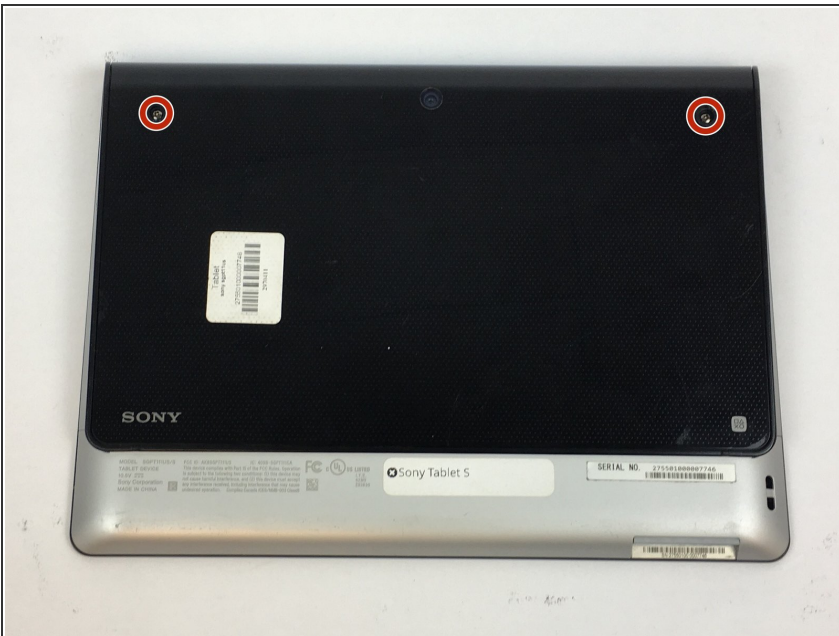
## Step 1 — Rear Camera



 Ensure that the device is completely turned off before attempting a repair. The battery may still have charge; use caution touching the components.

- Use a plastic opening tool to remove the two rubber grips on the back of the tablet.

## Step 2



- Remove the two 10mm Phillips #0 screws located under the grips.

### Step 3



- Flip the tablet over and use a plastic opening tool to pry the casing away from the top of the screen. Push the back cover off.
- ⓘ There is adhesive holding the case on located at the top of the screen. Push the casing toward the top of the screen while also wiggling it back and forth.

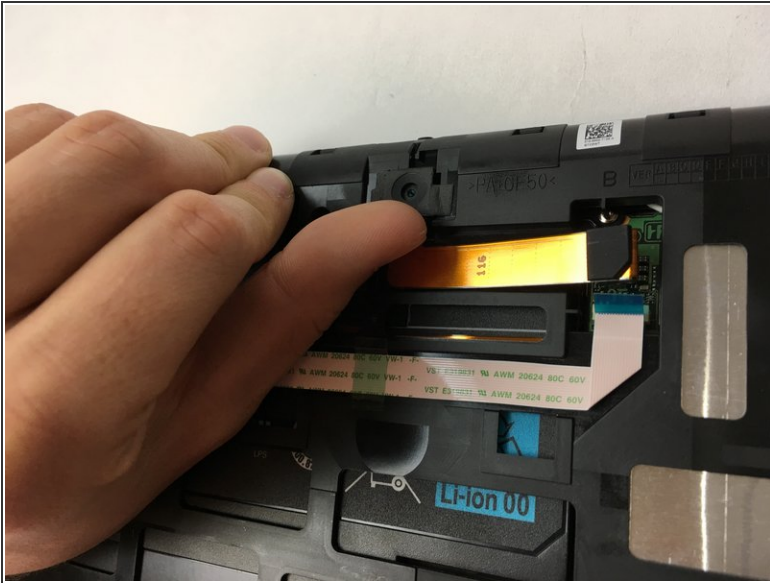
### Step 4



- Remove the copper ribbon cable by gently using a spudger to pry it up from its socket.
- ⚠ Use caution when removing the cable, as the socket is very fragile.



## Step 5



- Use a finger or a spudger to pull on camera housing.

## Step 6



- Remove the assembly from the plastic shielding.

To reassemble your device, follow these instructions in reverse order.