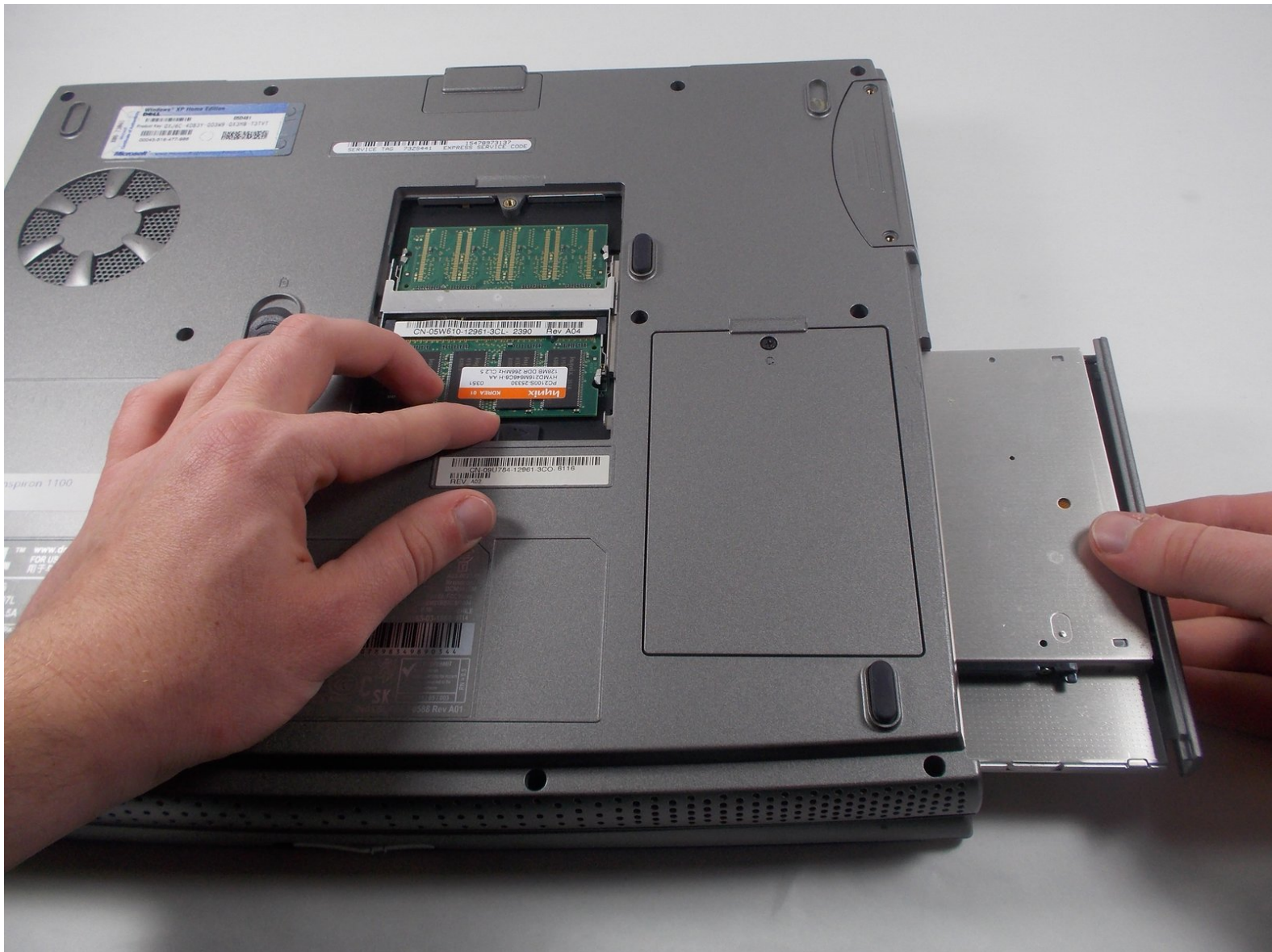




Written By: Alexander Pacheco



---

## INTRODUCTION

The CD Drive is used to read and write CDs. The CD Drive is delicate and can be easily broken which could lead to it needing replacement.

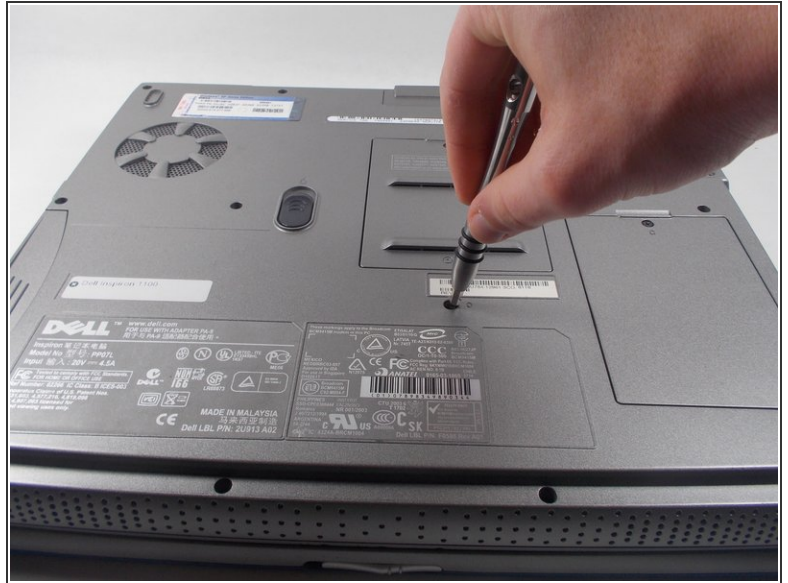
---



### TOOLS:

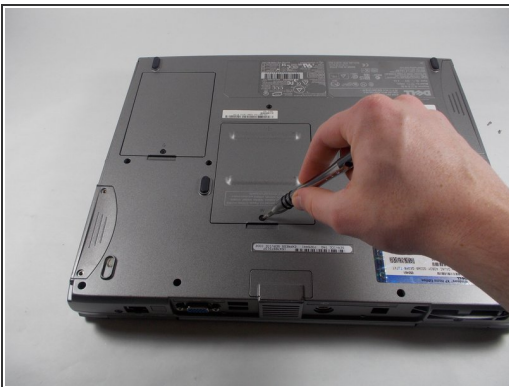
- [Phillips #0 Screwdriver](#) (1)
-

## Step 1 — CD Drive



- Unscrew the one 8mm Phillips #0 screw immediately below the RAM compartment and remove the panel.
- ⓘ This screw locks the CD Drive into place and must be completely removed before proceeding.

## Step 2



- Unscrew the one Phillips #0 screw at the bottom of the RAM compartment cover, and remove the RAM compartment cover.
- ⚠ The screw does not separate from the cover. Be careful when using force to remove the cover. Also be sure that the screw has been completely unscrewed.



## Step 3



- Push and hold the switch inside the RAM compartment to the right.
- ⓘ This will cause the CD Drive to be slightly pushed out of its slot.
- ☑ If the switch cannot be moved, check to make sure you have completed the first step in this guide.

## Step 4



- While holding down the switch in the RAM compartment, pull out the CD Drive.

To reassemble your device, follow these instructions in reverse order.