



# Sony Tablet S Wi-Fi Antenna Replacement

This guide will demonstrate how to replace a faulty Wi-Fi antenna.

Written By: Austin Mann






## TOOLS:

- [Phillips #0 Screwdriver](#) (1)
- [Phillips #000 Screwdriver](#) (1)
- [iFixit Opening Tools](#) (1)
- [Spudger](#) (1)

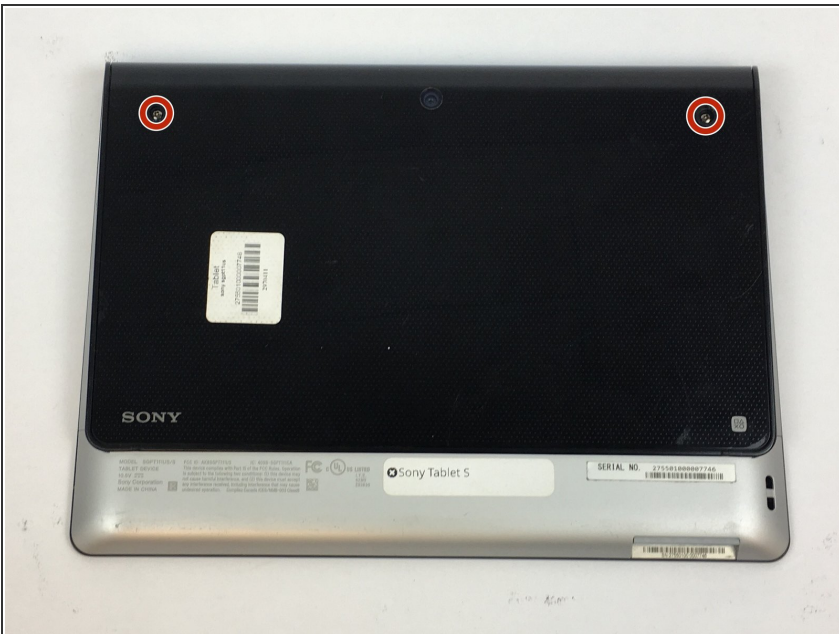
## Step 1 — Battery



 Ensure that the device is completely turned off before attempting a repair. The battery may still have charge; use caution touching the components.

- Use a plastic opening tool to remove the two rubber grips on the back of the tablet.

## Step 2



- Remove the two 10mm Phillips #0 screws located under the grips.

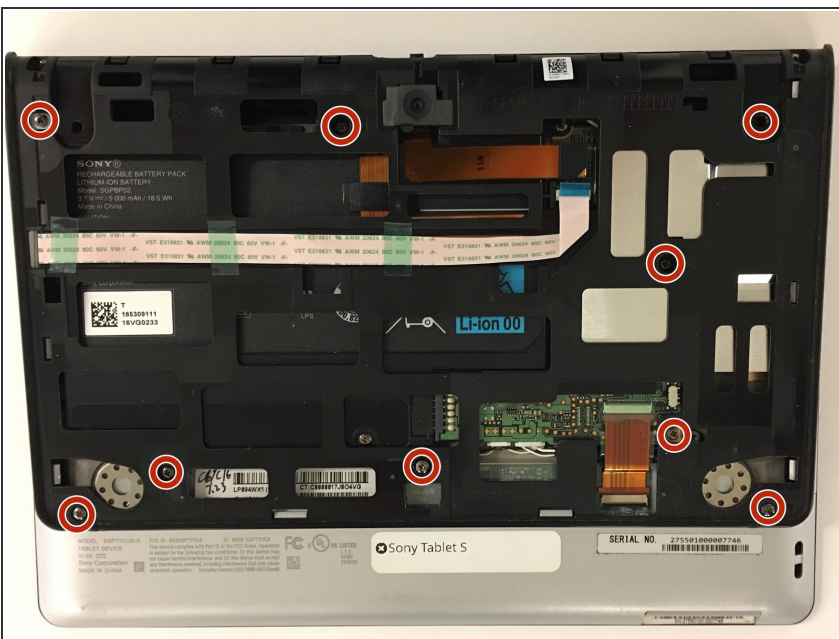


## Step 3



- Flip the tablet over and use a plastic opening tool to pry the casing away from the top of the screen. Push the back cover off.
- ⓘ There is adhesive holding the case on located at the top of the screen. Push the casing toward the top of the screen while also wiggling it back and forth.

## Step 4



- Once the casing is off, remove the nine 5mm Phillips #0 screws shown.

## Step 5



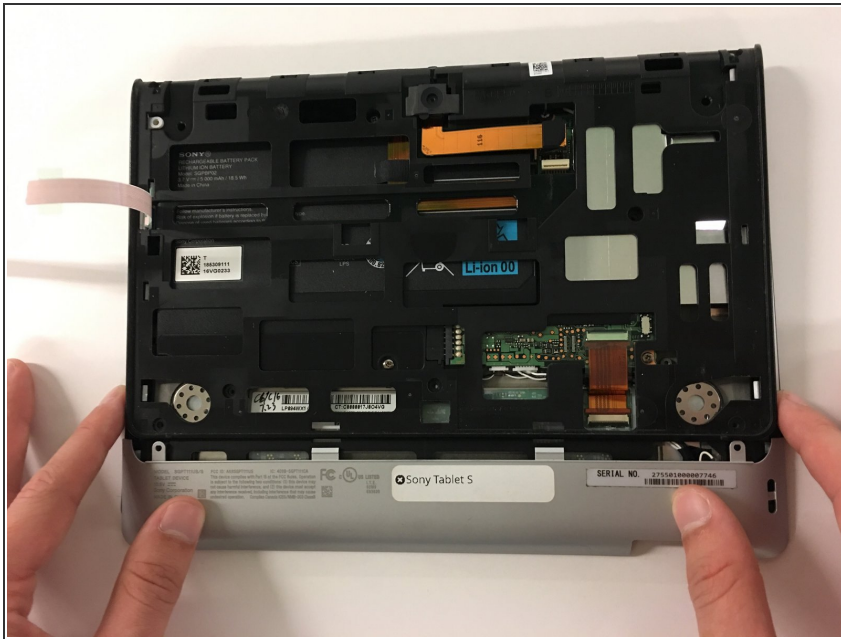
- Remove the white ribbon cable by pulling the blue tab straight up out of the socket and then peeling up the tape securing it to the tablet.
- ⚠ Use caution when removing the cable, as the socket is very fragile.

## Step 6



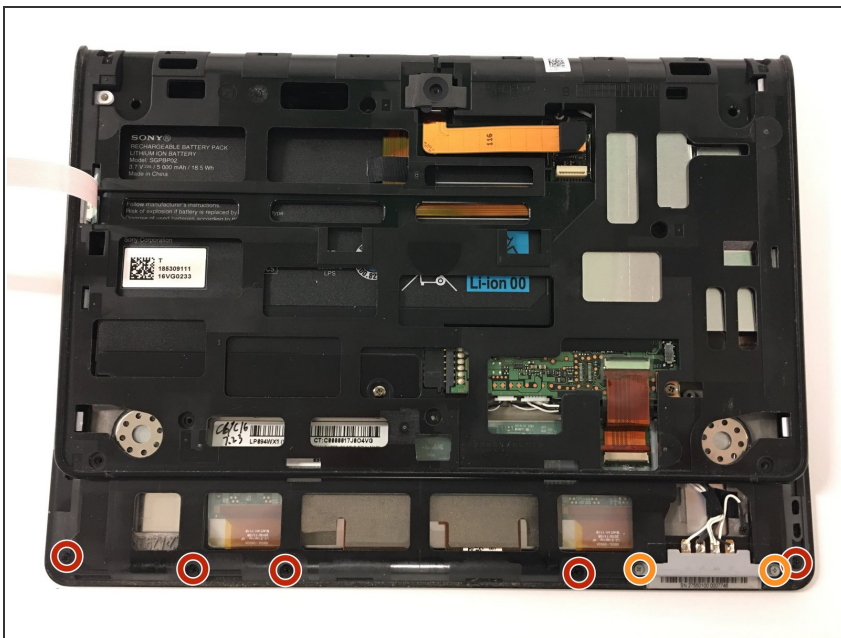
- Remove the copper ribbon cable by gently using a spudger to pry it up from its socket.
- ⚠ Use caution when removing the cable, as the socket is very fragile.

## Step 7



- Slide the bottom grey cover piece away from the body and remove it.
- ⓘ If this piece gives resistance, use a spudger on the sides of the tablet to pry it loose.

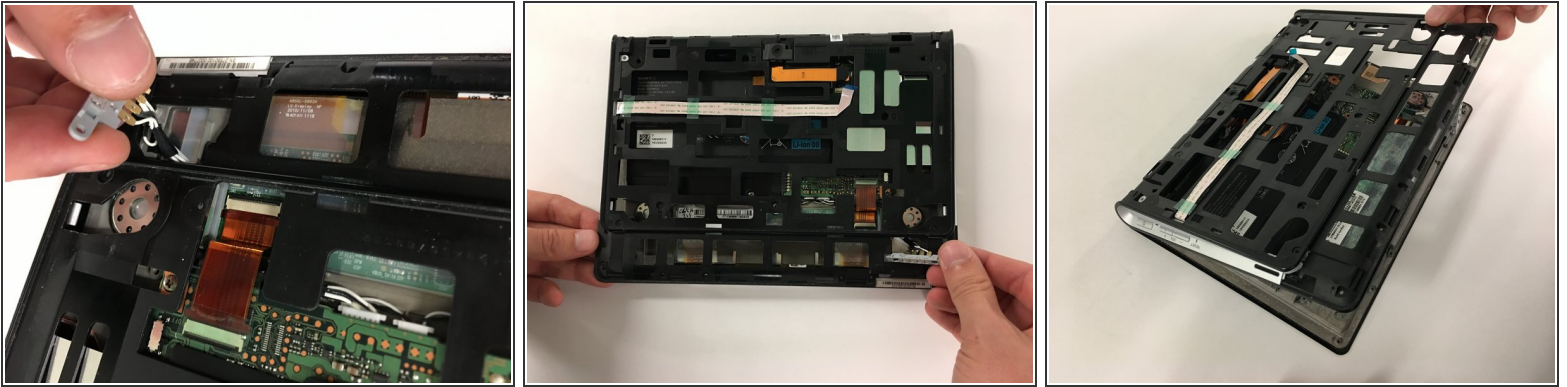
## Step 8



- Remove the five 4mm Phillips #000 screws.
- Remove the two 5mm Phillips #000 screws holding the charger in place.

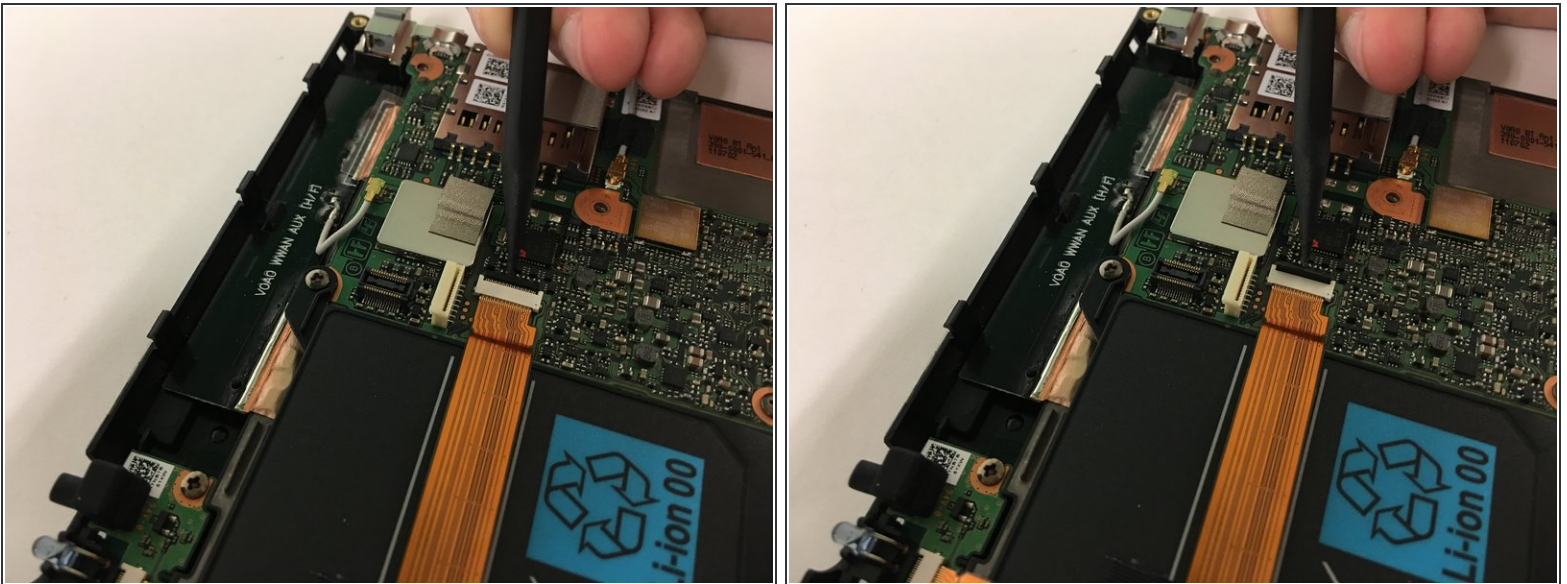


## Step 9



- Position the charging port at an angle so you can thread it through the opening as you remove the black plastic cover from the back of the tablet.
- ⓘ If the cover is not coming off easily, use a plastic opening tool to pry it loose from the edges of the screen.

## Step 10



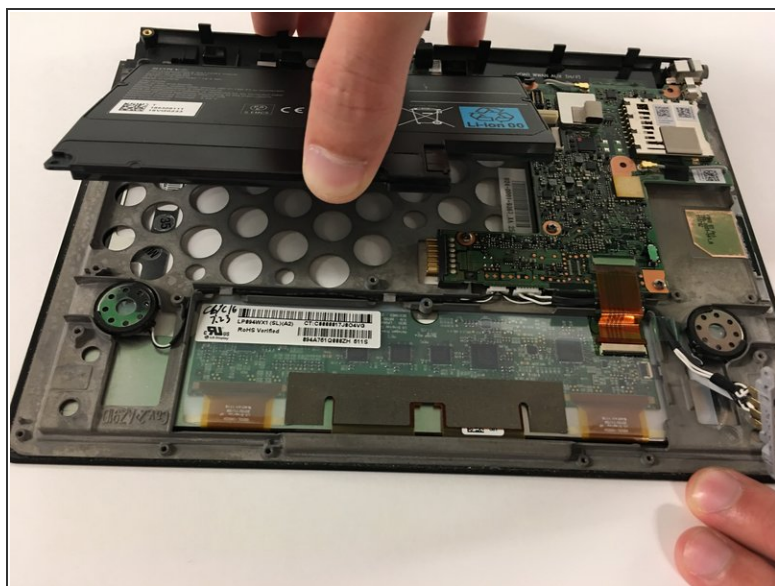
- Use a spudger to lift the zero insertion force connector latch for the long ribbon cable to the right of the battery, then pull the cable loose from its socket.
- ⚠ Use caution when removing the cable, as the socket is very fragile.

## Step 11



- Remove the three 5mm Phillips #0 screws securing the original battery.

## Step 12



- Use the spudger to pop the battery loose and remove the battery.

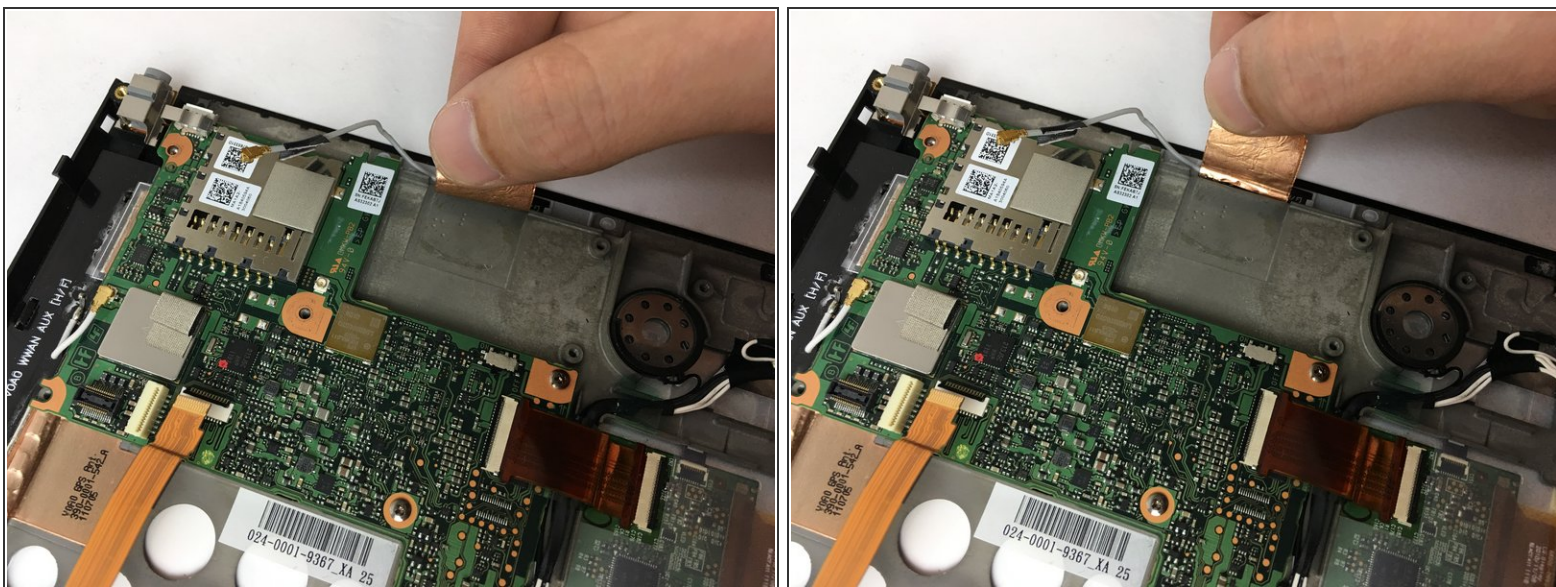


## Step 13 — Wi-Fi Antenna



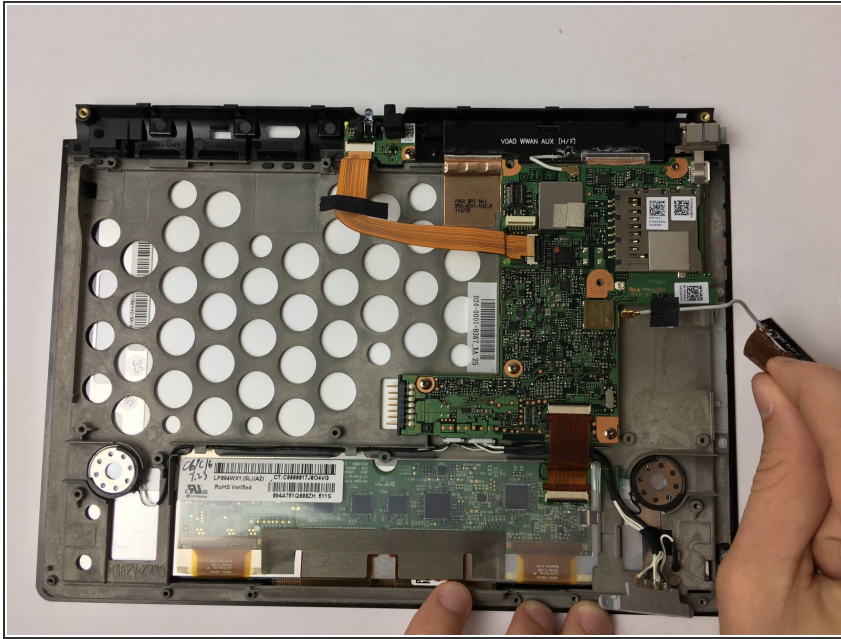
- Use a spudger to carefully remove the black tape, and gently disconnect the pin connector.

## Step 14



- Remove the copper tape securing the Wi-Fi antenna.

## Step 15



- Lift the entire assembly out.

To reassemble your device, follow these instructions in reverse order.