



# Sony BDP-BX620 Bluetooth Module Replacement

This guide will show you how to remove the...

Written By: Zachery Zavala



# INTRODUCTION

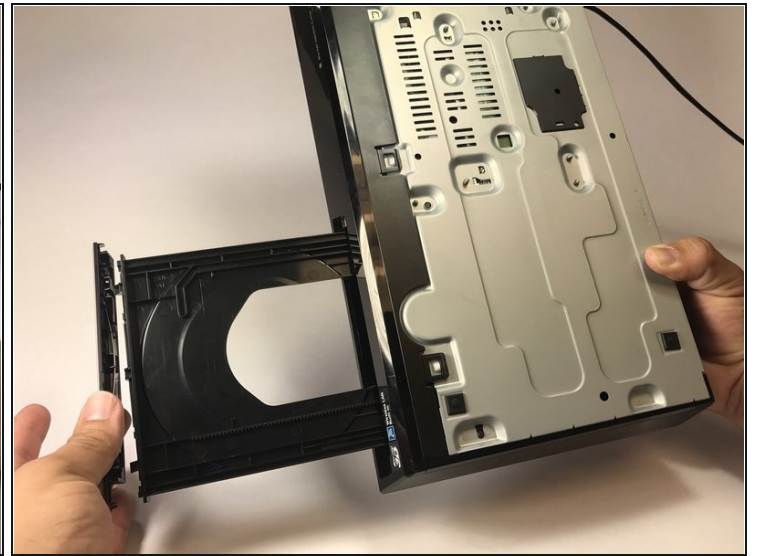
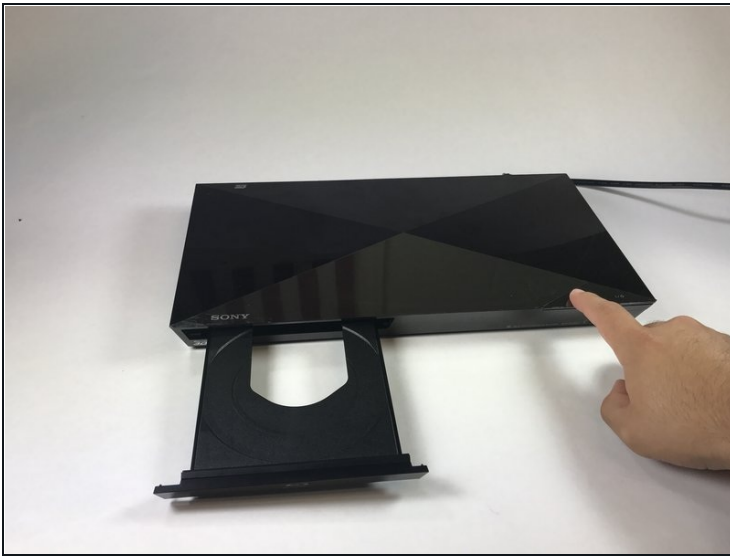
This guide will show you how to remove the Bluetooth module which controls the Bluetooth functions of the device.

## TOOLS:

Phillips #0 Screwdriver (1)

Tweezers (1)

## Step 1 — Outer Cover



- Power on the device, eject the disk tray, and power off the device.
- Turn the device over.
- Lightly apply downward pressure on the black covering on the disk tray until it comes off.

 Caution, applying too much pressure can break the black covering.

## Step 2



- Turn the device around.
  - Using a Phillips screw driver, remove the screws on both ends of the device circled red in the image.
  - Slide the side covers on either side towards the back of the device.
- ⓘ There is a back cover on either side of the device.

### Step 3



ⓘ This step might require someone to help unclasping the plastic clips.

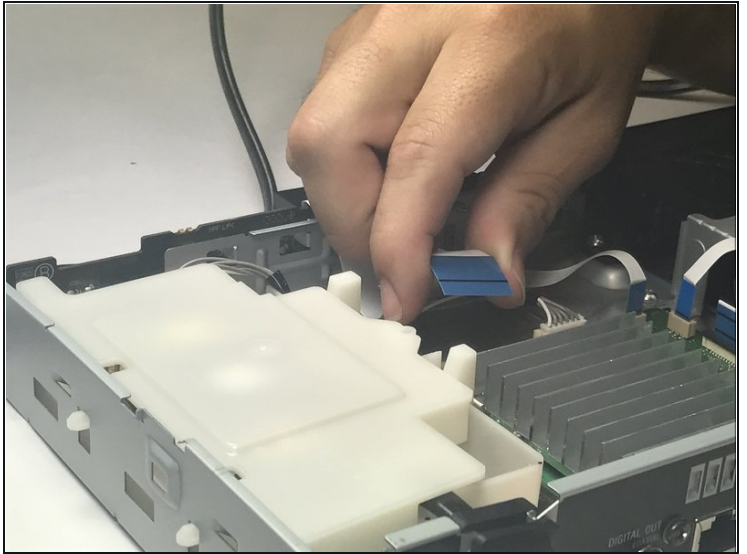
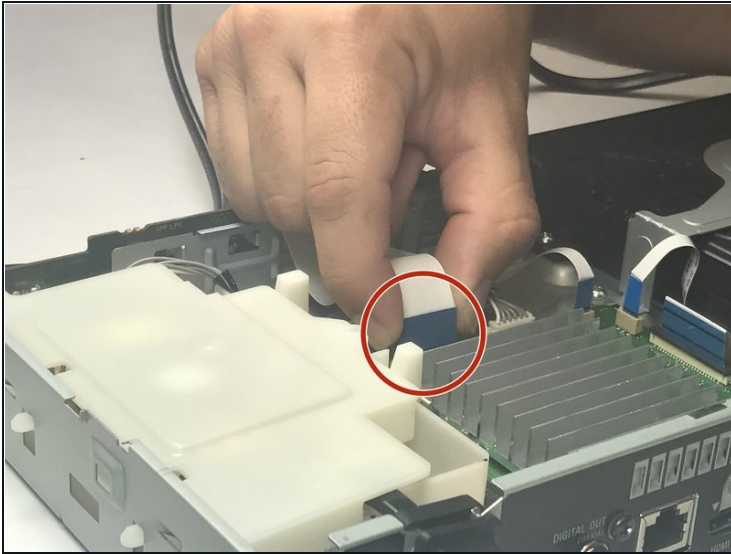
- Turn the device so that the bottom is facing up.
- In the bottom, unclip the three plastic clips circled in red.
- On either side, unclip the plastic clip circled in red
- Slide the black covering forwards to remove.

ⓘ All five clips have to be unclaspd for the covering to be removed.

⚠ Careful not to break the plastic clips when putting it back on.



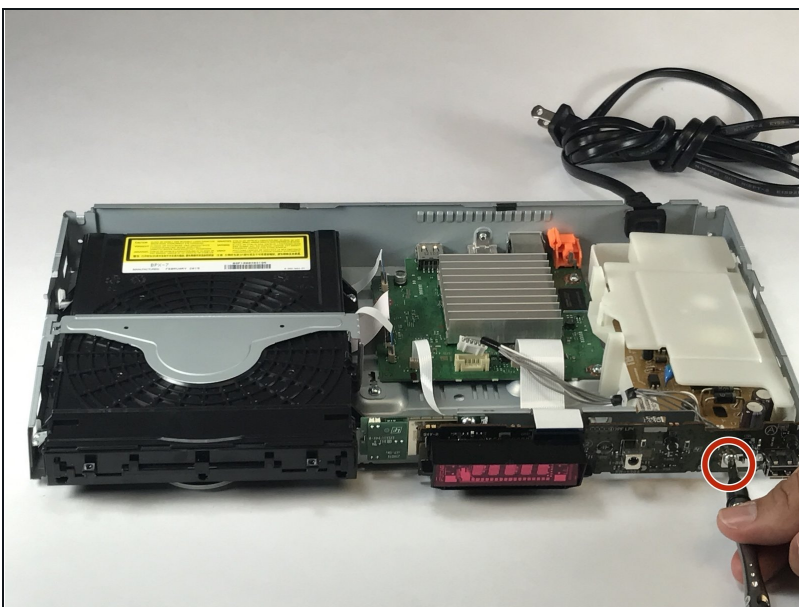
## Step 4 — Port Board



- Now, spot the large ribbon cable that connects between the motherboard and the port board.
- Remove the cable by pulling upwards.

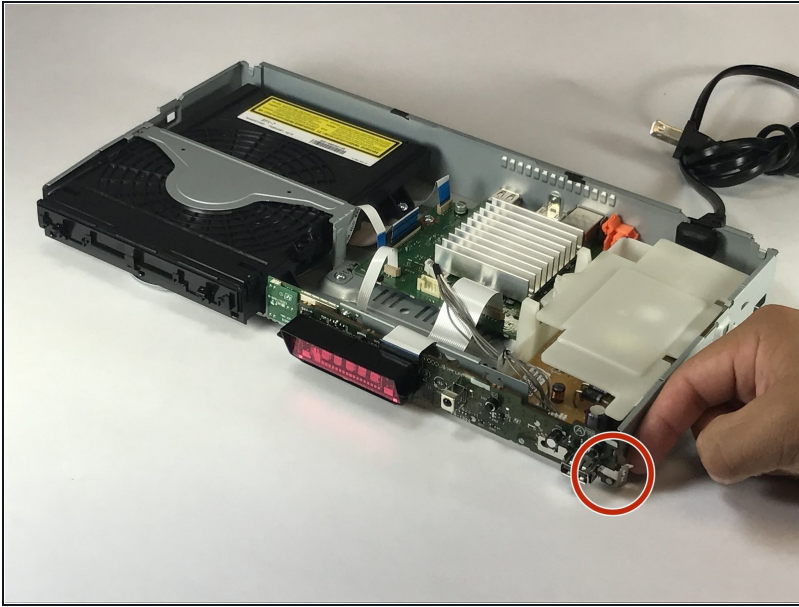
⚠ Be careful when pulling upwards on the ribbon cable. Too much force can cause it to rip.

## Step 5



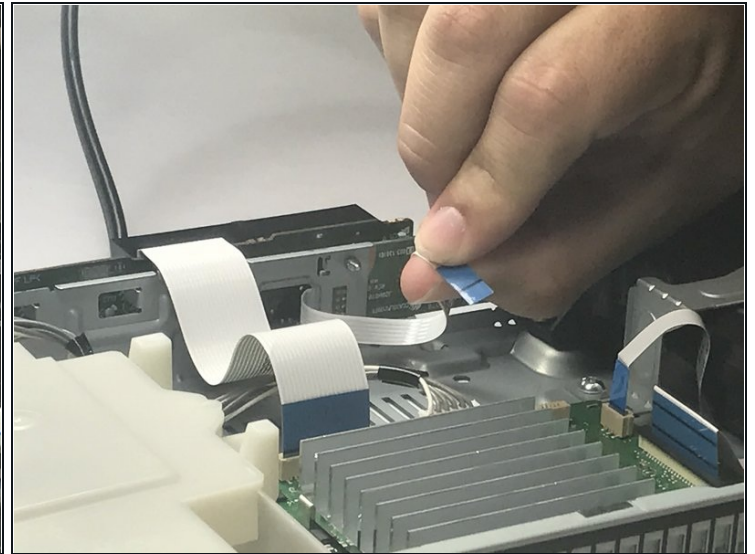
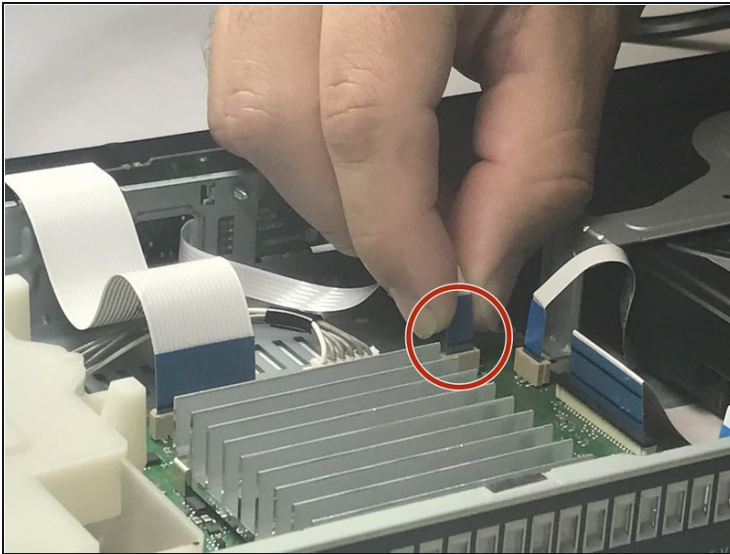
- Use your Phillips screwdriver to take out the silver screw holding in the port board.

## Step 6



- Now use the [tweezers](#) to unclip the portboard on the side.

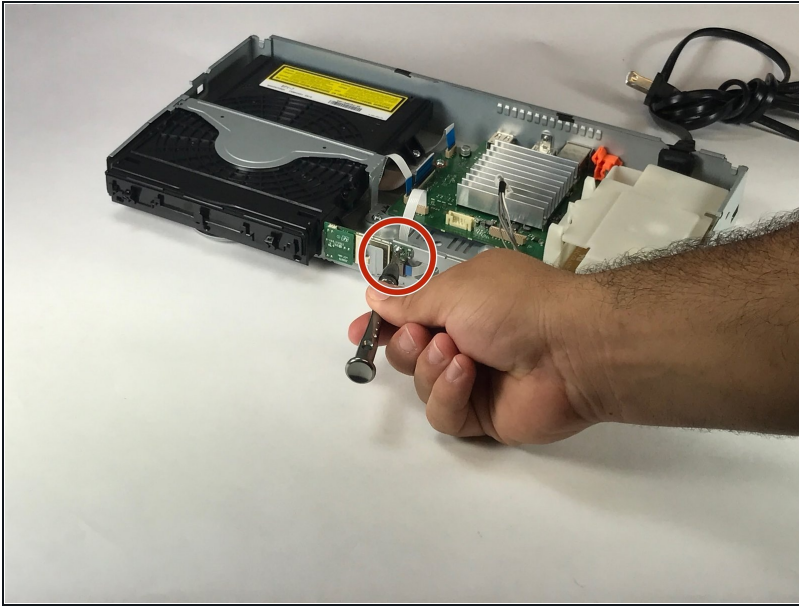
## Step 7 — Bluetooth Module



- Now, pull the small ribbon cable that connects between the motherboard and the Bluetooth module.

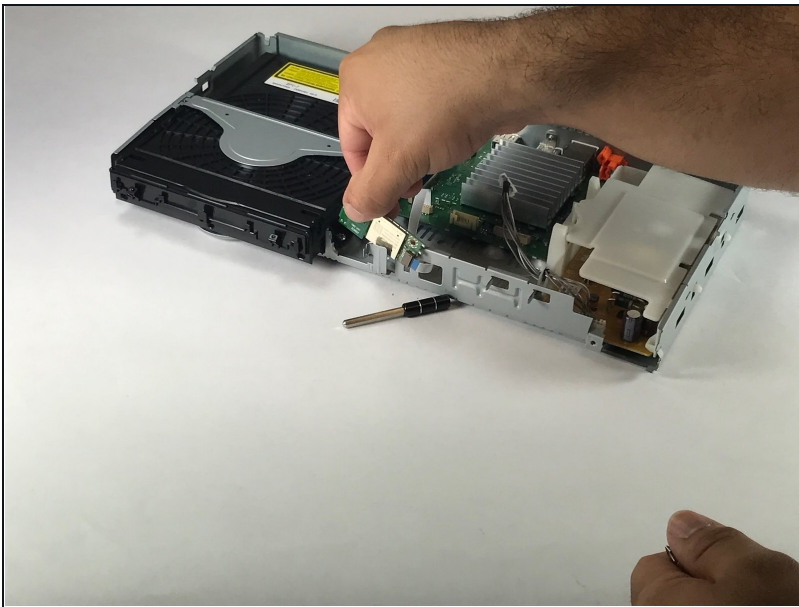
⚠ Be careful to not pull too hard or the ribbon cable will rip.

## Step 8



- Use your Phillips screwdriver to remove the silver screw holding the Bluetooth module in place.

## Step 9



- Lift to remove the bluetooth module from the device.
- ⓘ To prevent damage, always hold it on the sides.

---

To reassemble your device, follow these instructions in reverse order.