



Sony Alpha 6000 Setting Wheel Replacement

If the setting wheel of your Sony Alpha 6000 gets stuck, or is broken, this guide will help in replacing it.

Written By: Fernando Sierra



INTRODUCTION

This replacement is susceptible to breakage due to the amount of force that may be required for some of the removal process.

TOOLS:

- [iFixit Opening Tools](#) (1)
 - [Phillips #00 Screwdriver](#) (1)
 - [Tweezers](#) (1)
 - [Phillips J00 Screwdriver](#) (1)
-

Step 1 — Battery



- Make sure the camera is turned off by turning the switch to OFF.

Step 2



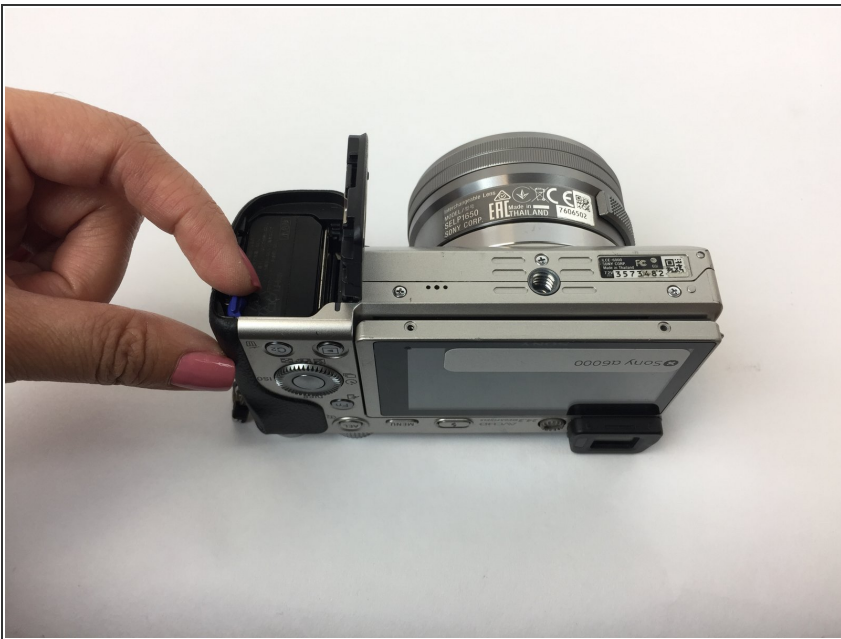
- Flip the camera around to access the battery compartment.
- Slide the battery compartment lock to the left to unlock it.

Step 3



- Locate the blue latch that holds the battery in.

Step 4



- Push the latch back to release battery.

Step 5



- The battery can now be taken out of its compartment.

Step 6 — Back Cover



- Turn the camera upside down and unscrew these two bottom 6 mm screws located on either side of the body by using the J00 head screw.

Step 7



- Turn the camera sideways.
- Open the mini HDMI compartment and locate the two 6 mm screw underneath and another to the right of the compartment.
- Unscrew using the J00 head screw.

Step 8



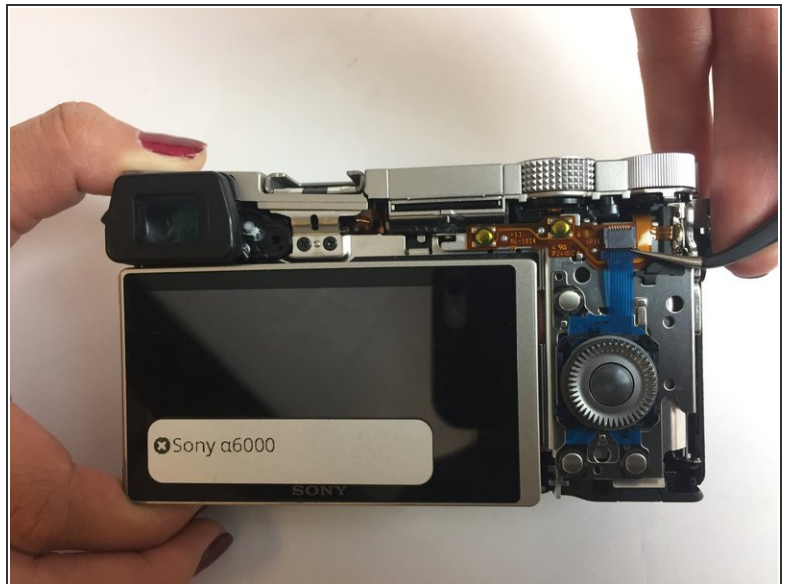
- Locate the two 4 mm screws within the battery compartment and unscrew them using the J00 screw head.

Step 9



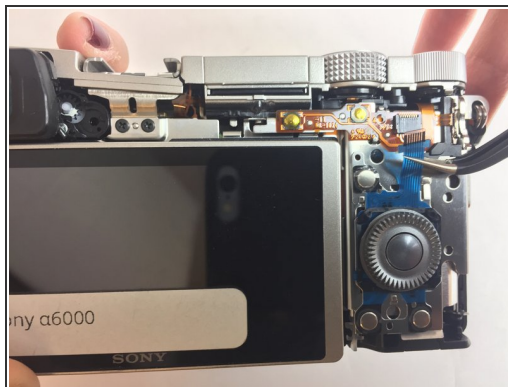
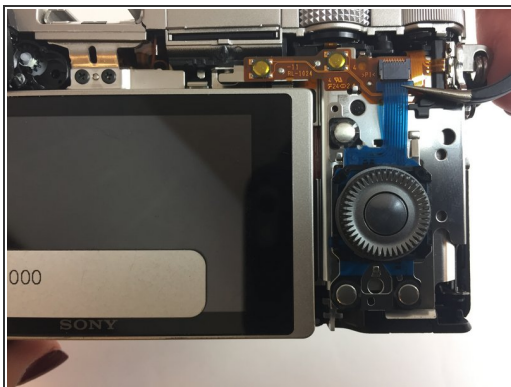
- Bend the camera's screen forward to uncover two 3 mm screws below the eyepiece.
- Locate them and unscrew them.

Step 10



- Use a plastic opening tool around the body of the camera to wedge the back cover off. Start from the bottom next to the battery compartment.
- If necessary, lightly use your hand to pull the the back cover down to completely remove it.

Step 11 — Setting Wheel



- Once the back cover is removed, using tweezers, pull to remove the ribbon cable that is holding the settings wheel.
- Now you can pull the settings wheel out of the camera.

To put the camera back together, follow these steps in reverse order.