



Black and Decker PS1800 Switch Replacement

This guide describes how to replace the Black...

Written By: Hamza Nawaz



INTRODUCTION

This guide describes how to replace the Black and Decker PS1800 switch. A soldering gun is necessary to replace the switch. Personal protective equipment is suggested.

TOOLS:

Phillips #00 Screwdriver (1)

Step 1 — Open the Outer Drill Case



- Lay the drill on its side, assuring that the screw holes are facing upwards.
- Remove seven 12 mm screws using a Phillips #00 screwdriver.

Step 2



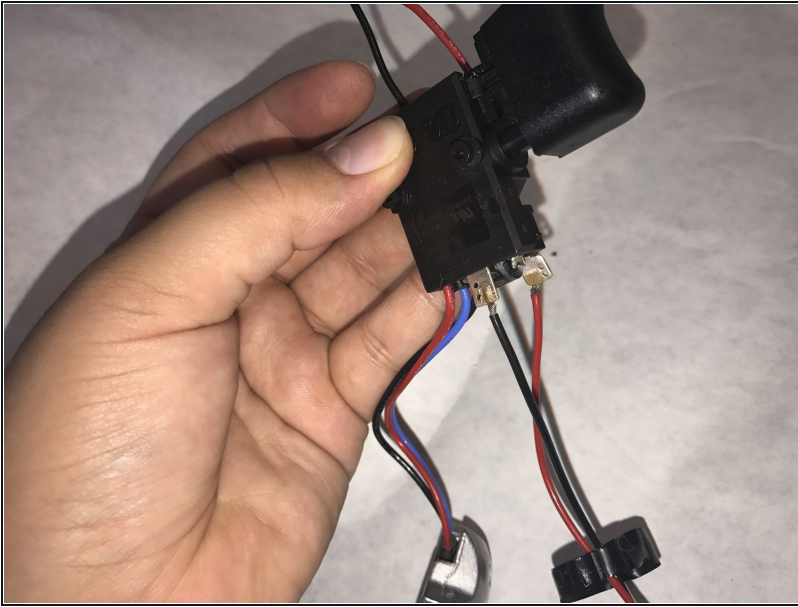
- Separate the outer drill case to expose the components and switch.

Step 3 — Switch



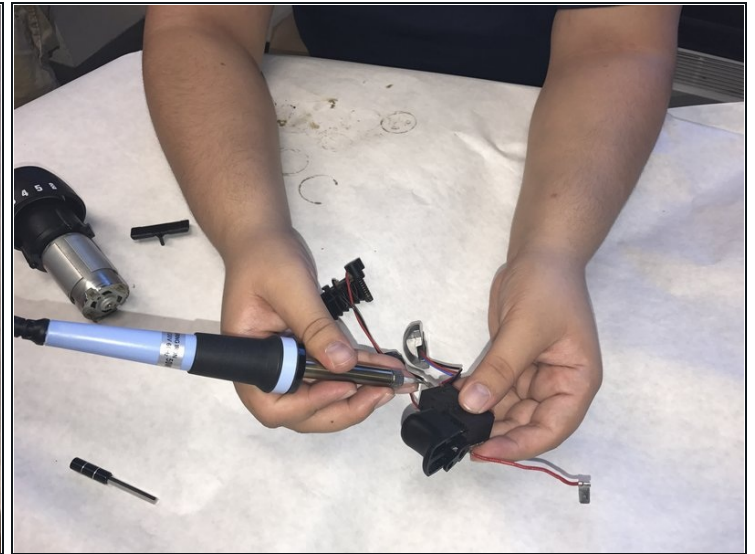
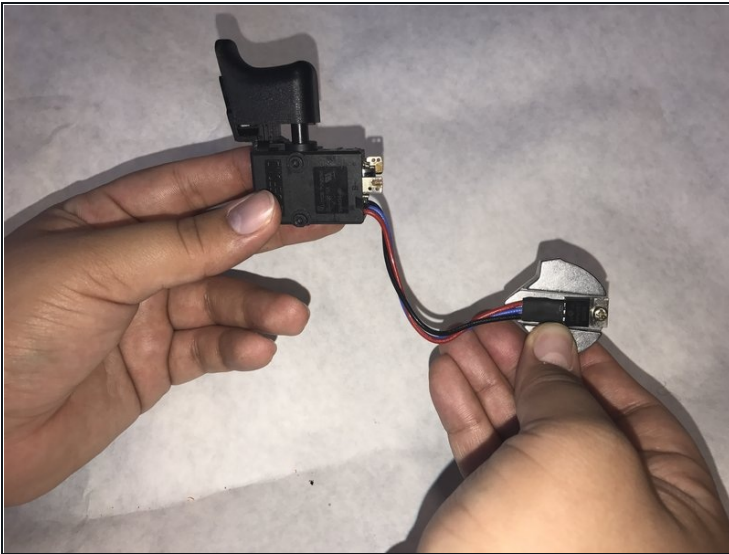
- Identify the switch in center of the drill.
- Remove the screws from the switch.
- Remove the switch cover.

Step 4



- Locate the switch inside the drill.
- Remove the switch from the drill.

Step 5



- [Solder](#) off all the joints.
- Remove the switch assembly.

To reassemble your device, follow these instructions in reverse order.