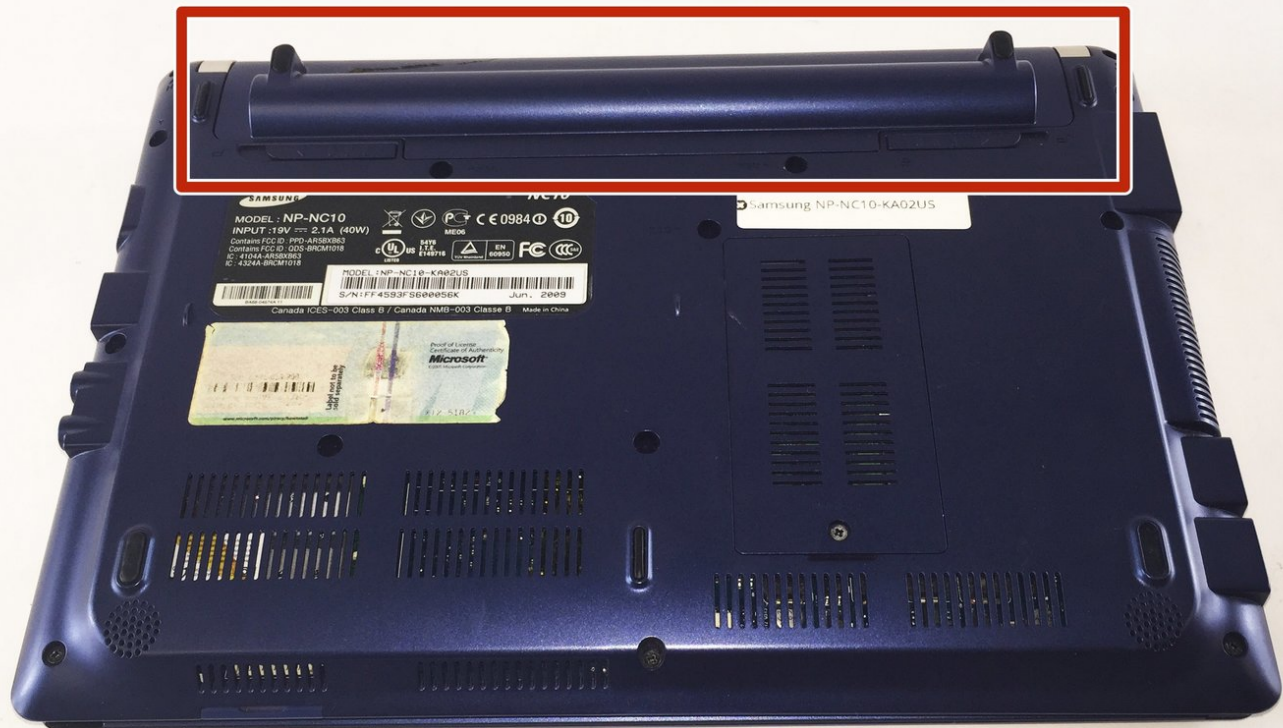




Samsung NP-NC10-KA02US Battery Replacement

If your device is not turning on properly or dying quickly it might be the battery. This guide will help you with replacing your battery.

Written By: Abigail Nicholas



Step 1 — Battery



- Locate the external battery on the bottom side of the device.
- Locate the tab on the right side of the battery.
- Shift the tab to the left.

Step 2



- Locate the tab on the left side of the device's battery.
- Push the left tab to the right.

Step 3



- Pull the battery up from the device.

To reassemble your device, follow these instructions in reverse order.