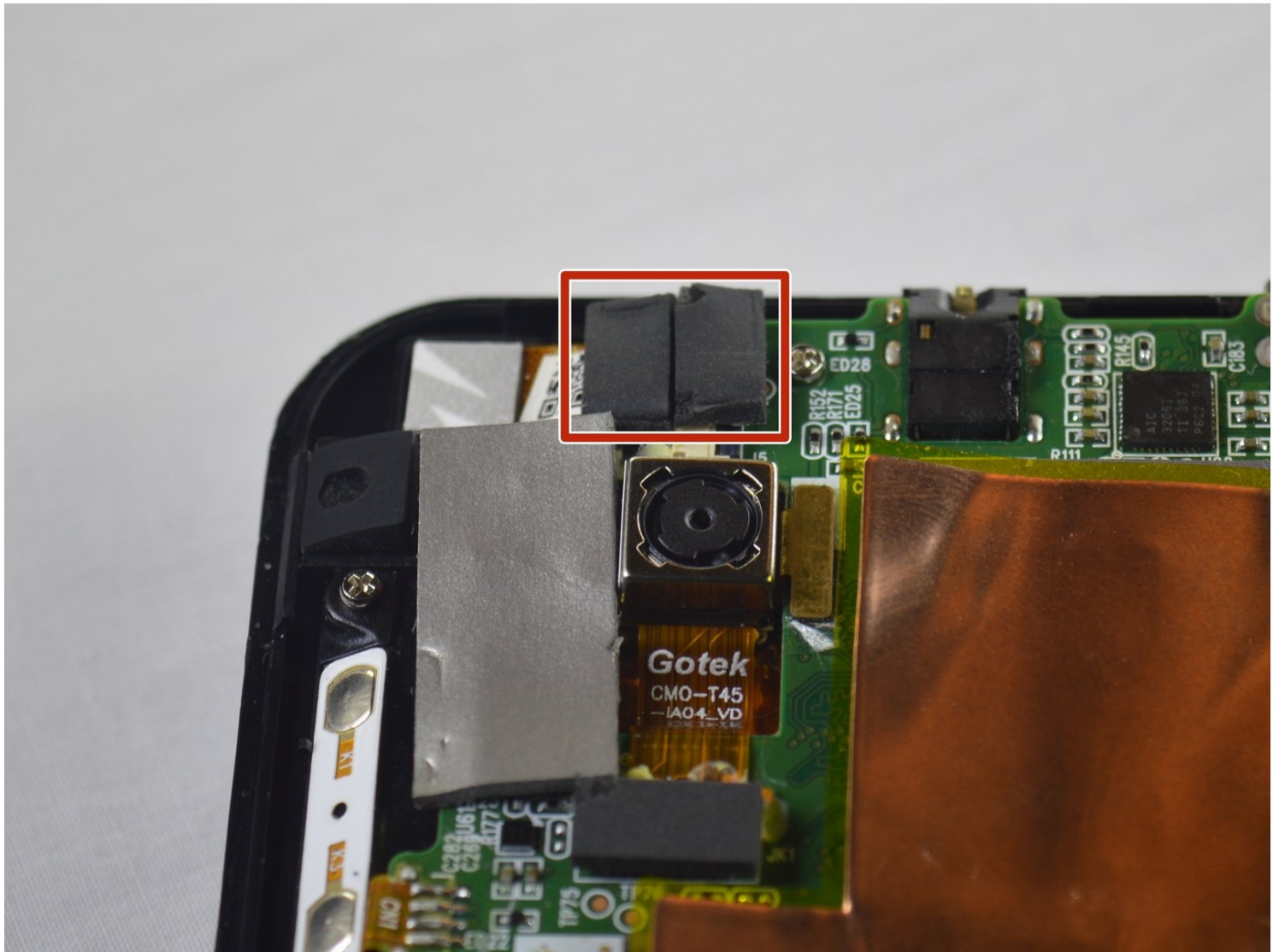




# HP Slate 7 Plus 4200US Front Facing Webcam Replacement

Written By: Jessica Andrade



---

## TOOLS:

Spudger (1)

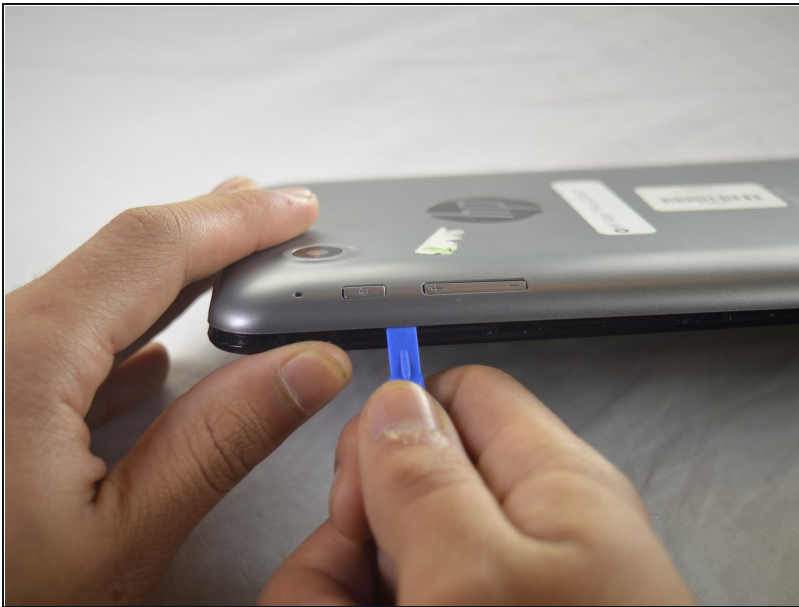
Soldering Iron (1)

iFixit Opening Tool (1)

Tweezers (1)

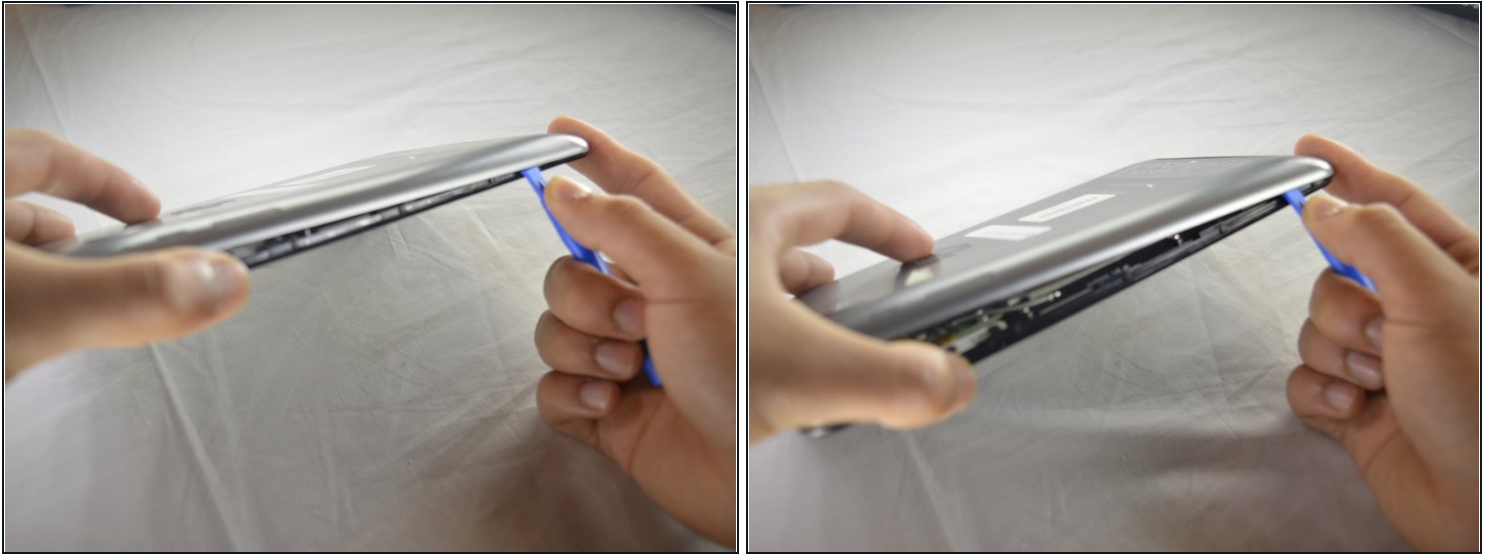
---

### Step 1 — Tablet Cover



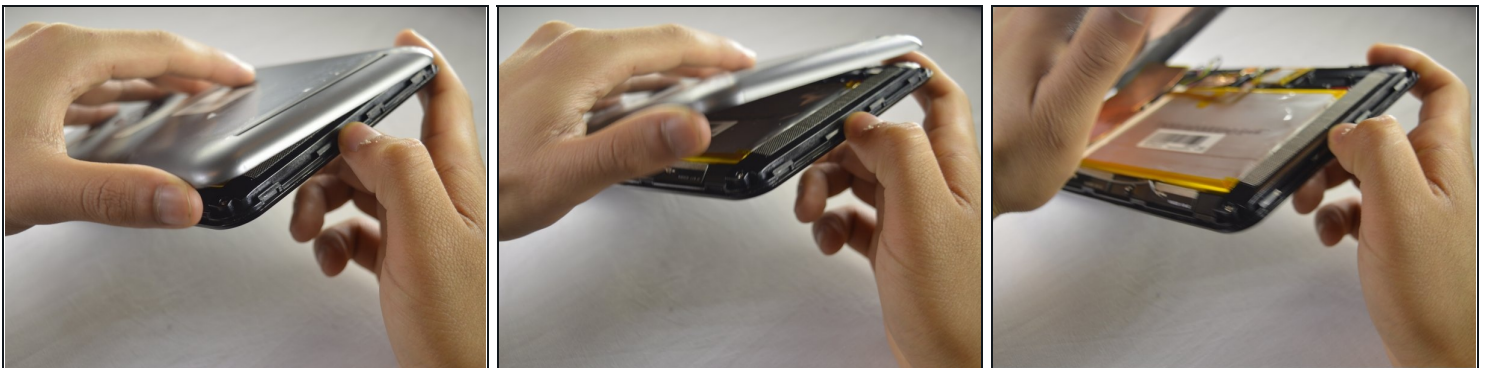
- Turn off the tablet and disconnect the power and all external devices from the tablet.
- Position the tablet with the display panel down and the right side toward you.
- Carefully insert a plastic opening tool between the tablet cover and display panel assembly, separating the two components. The first insertion point should be between the power button and the volume buttons.

## Step 2



- Slide the tool around the perimeter of the tablet until the edge of the cover is completely separated from the display panel assembly.

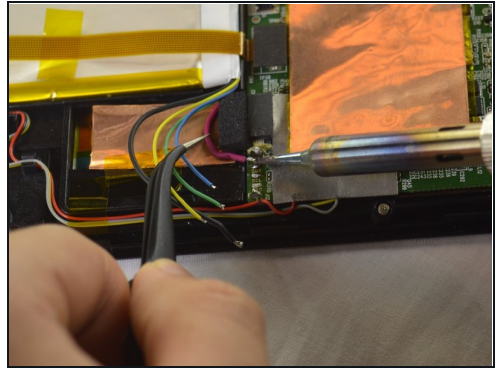
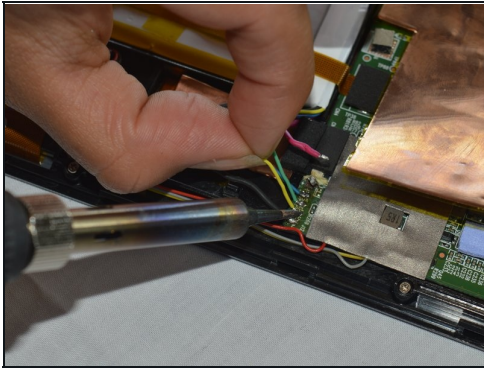
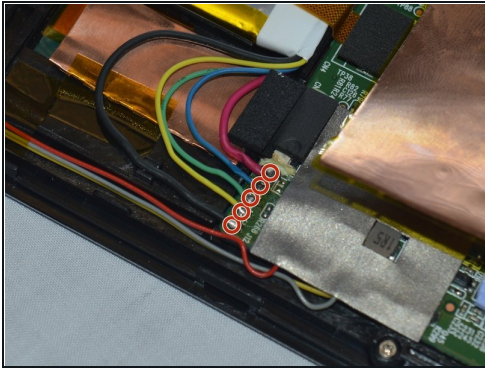
## Step 3



- Pry open the back cover to take it off.

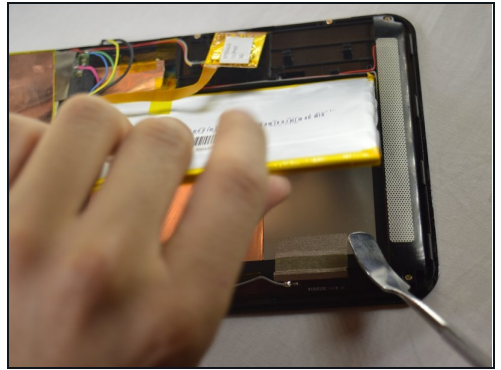
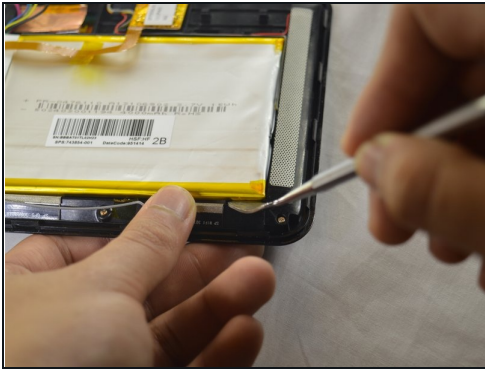


## Step 4 — Battery



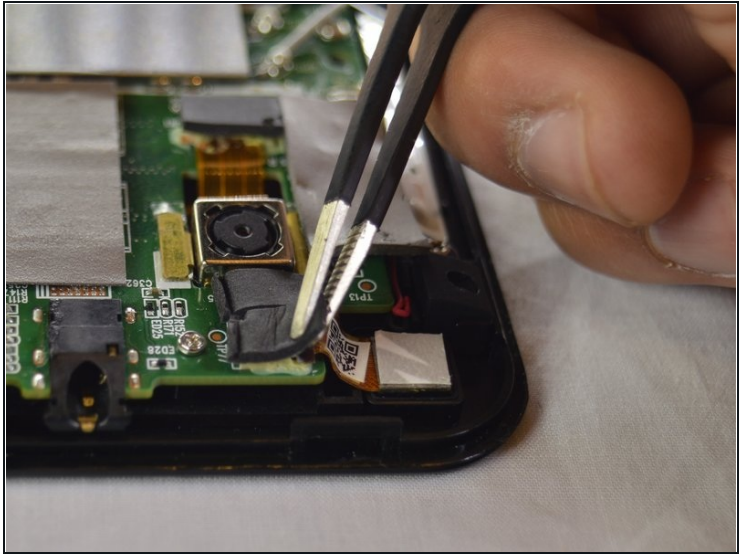
- Disconnect the battery cables from the system board by desoldering them. See [iFixit guide on how to solder](#).
- ⓘ The battery cables are soldered to the system in the following sequence, top to bottom: red, blue, green, yellow, black.

## Step 5



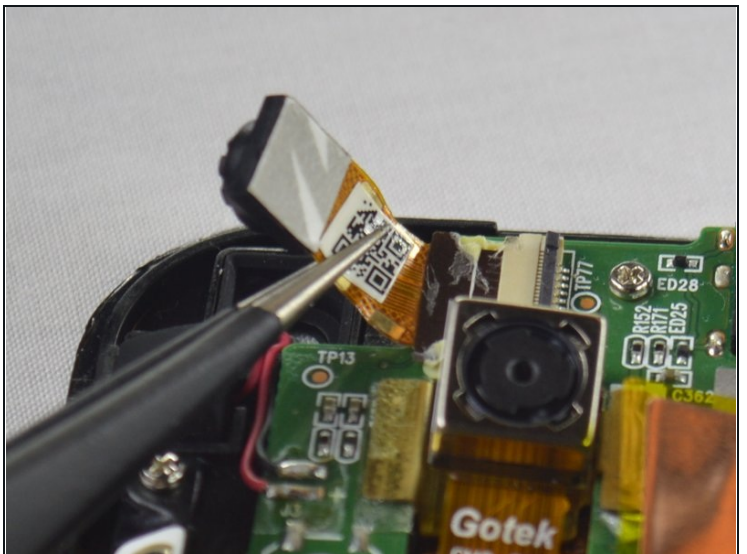
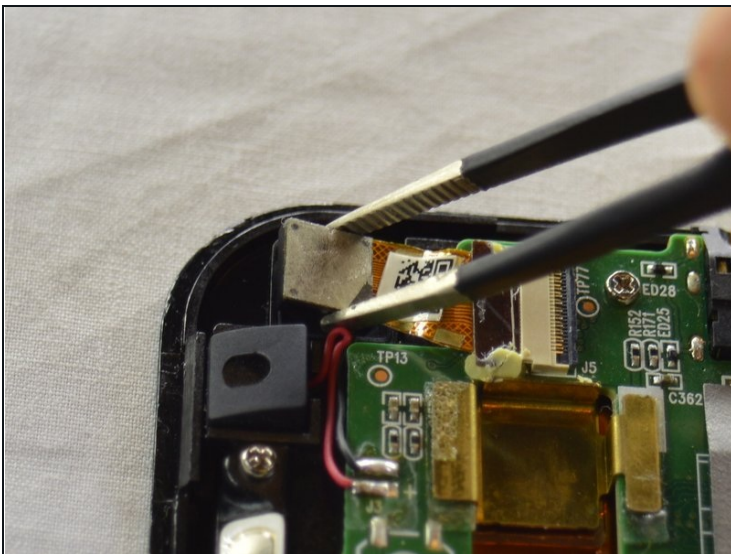
- Insert a nylon spudger between the battery and the display panel assembly. Carefully pry the battery up and remove it from its place.
  - ⓘ The battery is attached to the display panel assembly with double-sided adhesive. Make sure to firmly pull the battery.
- ⚠ The regular black nylon spudger should be used whenever possible, especially around batteries.

## Step 6 — Front Facing Webcam



- Use [tweezers](#) to remove the black foam stickers from the front facing camera to expose the wiring.

## Step 7



- Lift the camera out from system board and firmly pull the wire out from the connector.

---

To reassemble your device, follow these instructions in reverse order.