



# HP Slate 7 Plus 4200US Tablet Cover Replacement

Use this guide to replace the tablet cover on your HP Slate 7 Plus 4200US.

Written By: Jessica Andrade





## TOOLS:

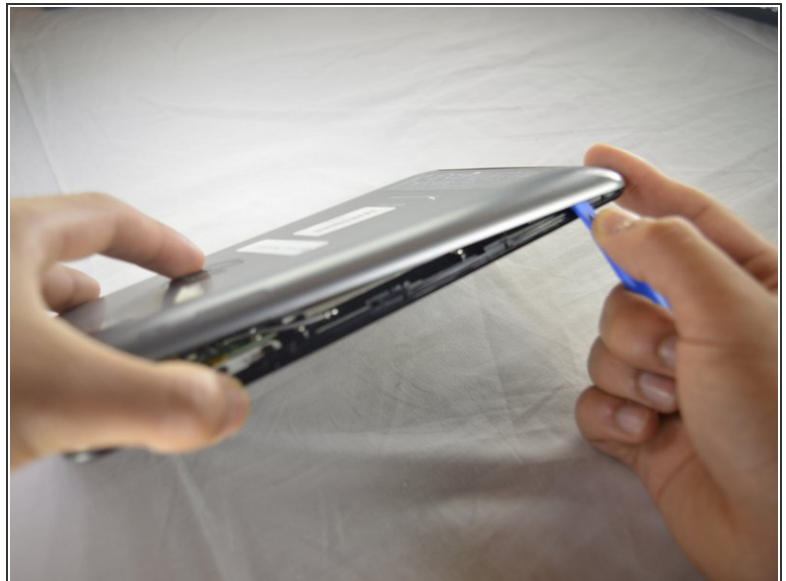
- [iFixit Opening Tools](#) (1)
-

## Step 1 — Tablet Cover



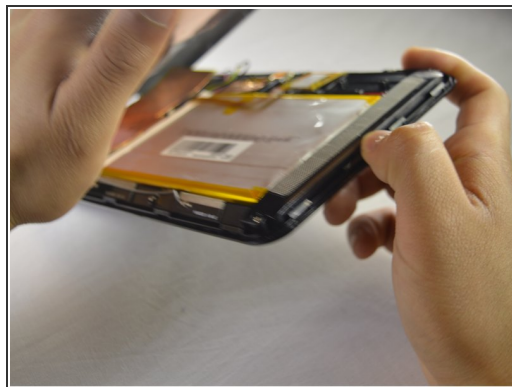
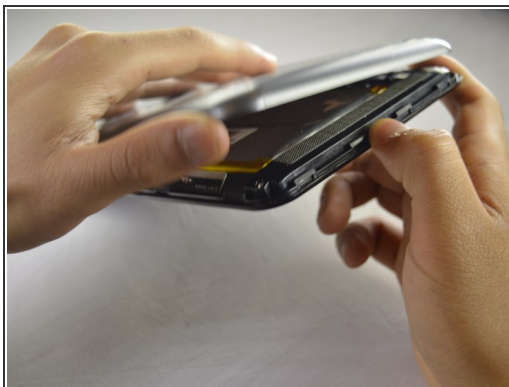
- Turn off the tablet and disconnect the power and all external devices from the tablet.
- Position the tablet with the display panel down and the right side toward you.
- Carefully insert a plastic opening tool between the tablet cover and display panel assembly, separating the two components. The first insertion point should be between the power button and the volume buttons.

## Step 2



- Slide the tool around the perimeter of the tablet until the edge of the cover is completely separated from the display panel assembly.

## Step 3



- Pry open the back cover to take it off.

To reassemble your device, follow these instructions in reverse order.