



Toshiba NB305 Hard Drive Replacement

Replace Hard drive to add more room onto your laptop or to replace a broken hard drive.

Written By: Nuri Chung



INTRODUCTION

Make sure that you handle your new hard drive with care. Dropping it could completely destroy the device. Also make sure that when you are working on anything on the inside of the laptop avoid static friction as much as possible. Replacing your smaller hard drive with a hard drive with a larger memory will give you more memory on your laptop and can help if you are running low on space.



TOOLS:

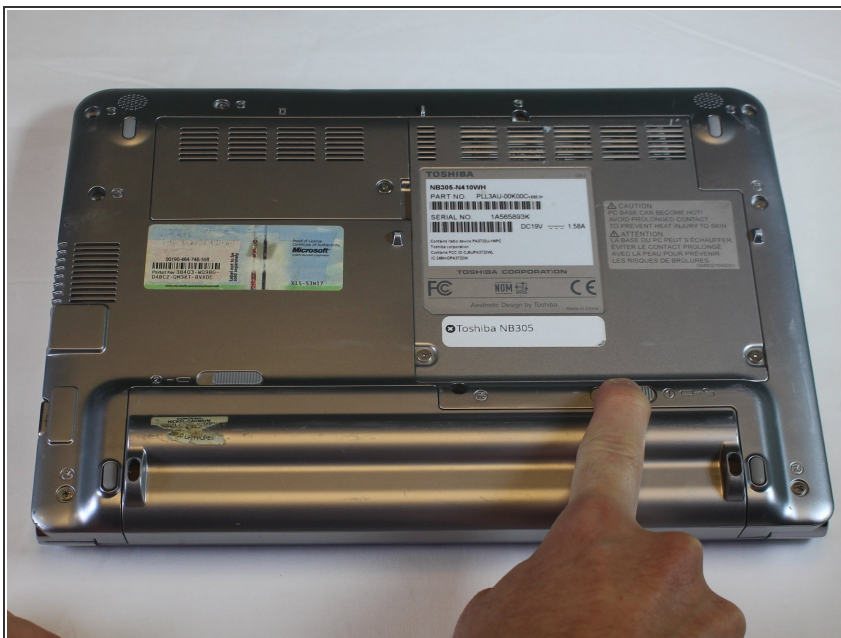
- [T6 Torx Screwdriver](#) (1)
 - [Spudger](#) (1)
-

Step 1 — Battery



- Place the laptop upside down with the battery facing you.

Step 2



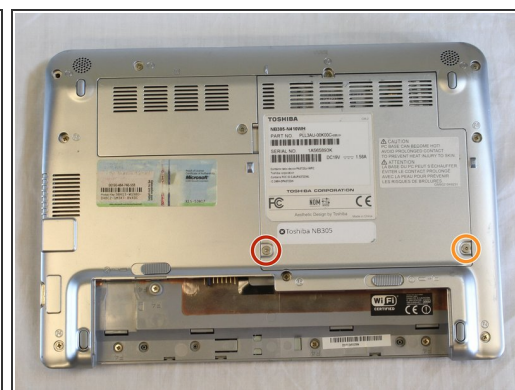
- Use your right hand to move latch 1 to the right to unlock the battery.

Step 3



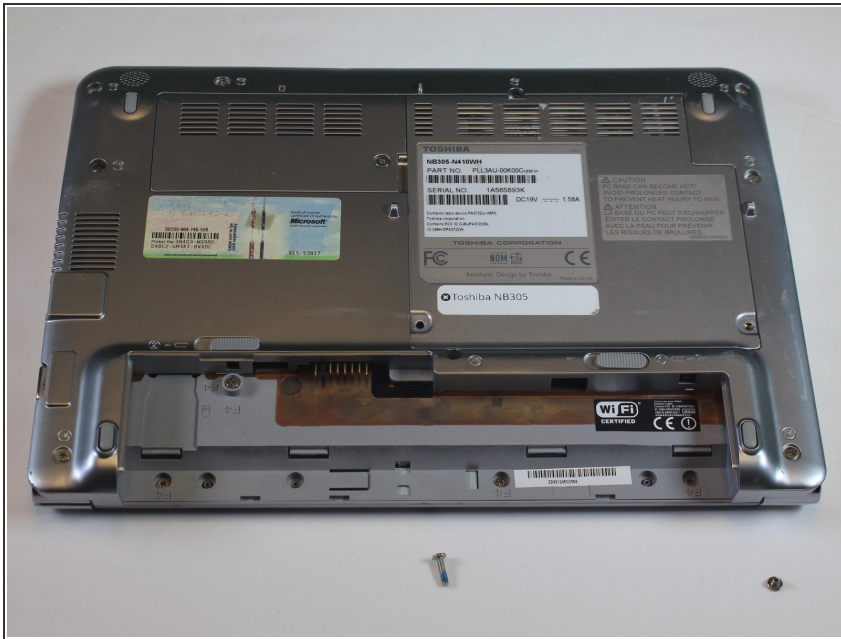
- Use your left hand to hold latch 2 to the left.
- Simultaneously take the battery out with your right hand.

Step 4 — Hard Drive



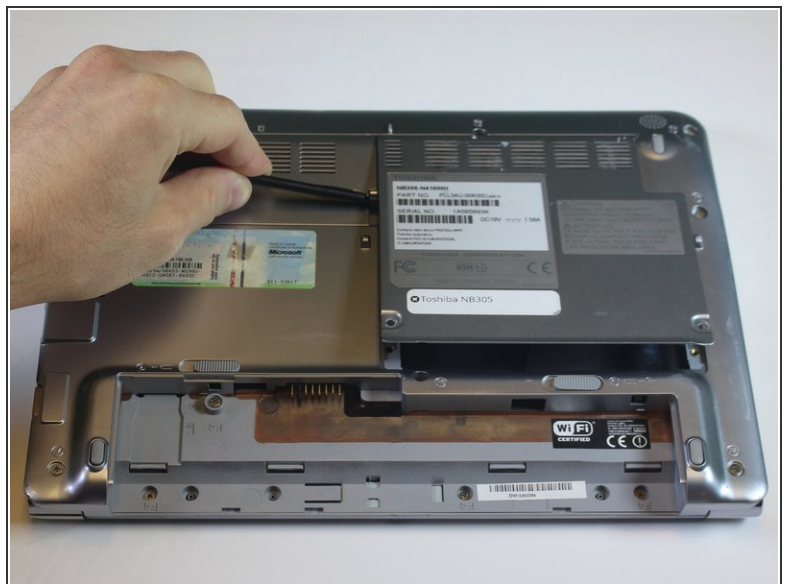
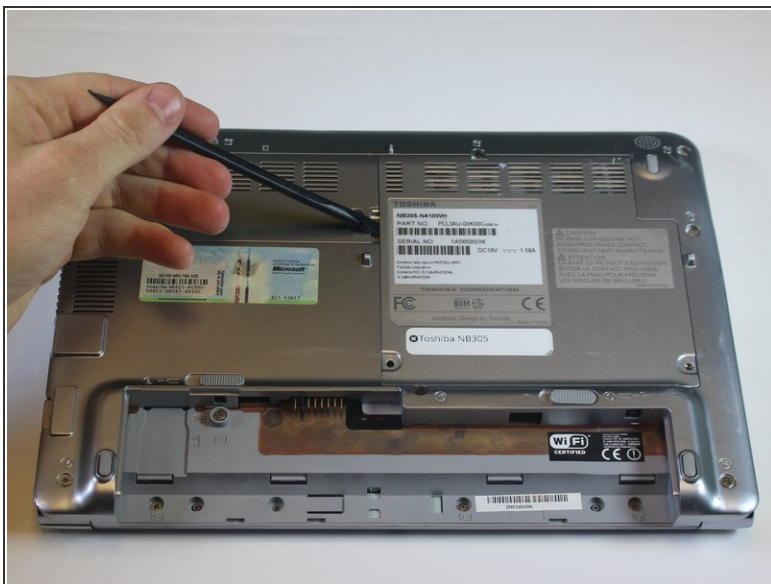
- Locate the two torx T-6 screws on the back of the laptop and remove them.
 - 6mm Torx T-6 screws.
 - 3mm Torx T-6 screws.

Step 5



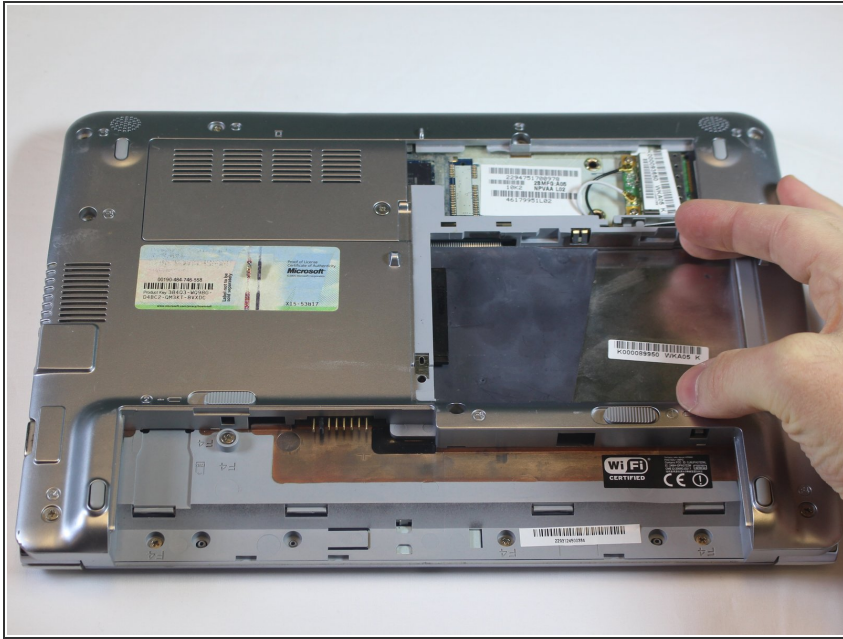
i Note that the screw on the left is longer than the screw on the right.

Step 6



- Using spudger, pry the panel up.

Step 7



- Remove hard drive by pulling to the right and then upward and out.

To reassemble your device, follow these instructions in reverse order.