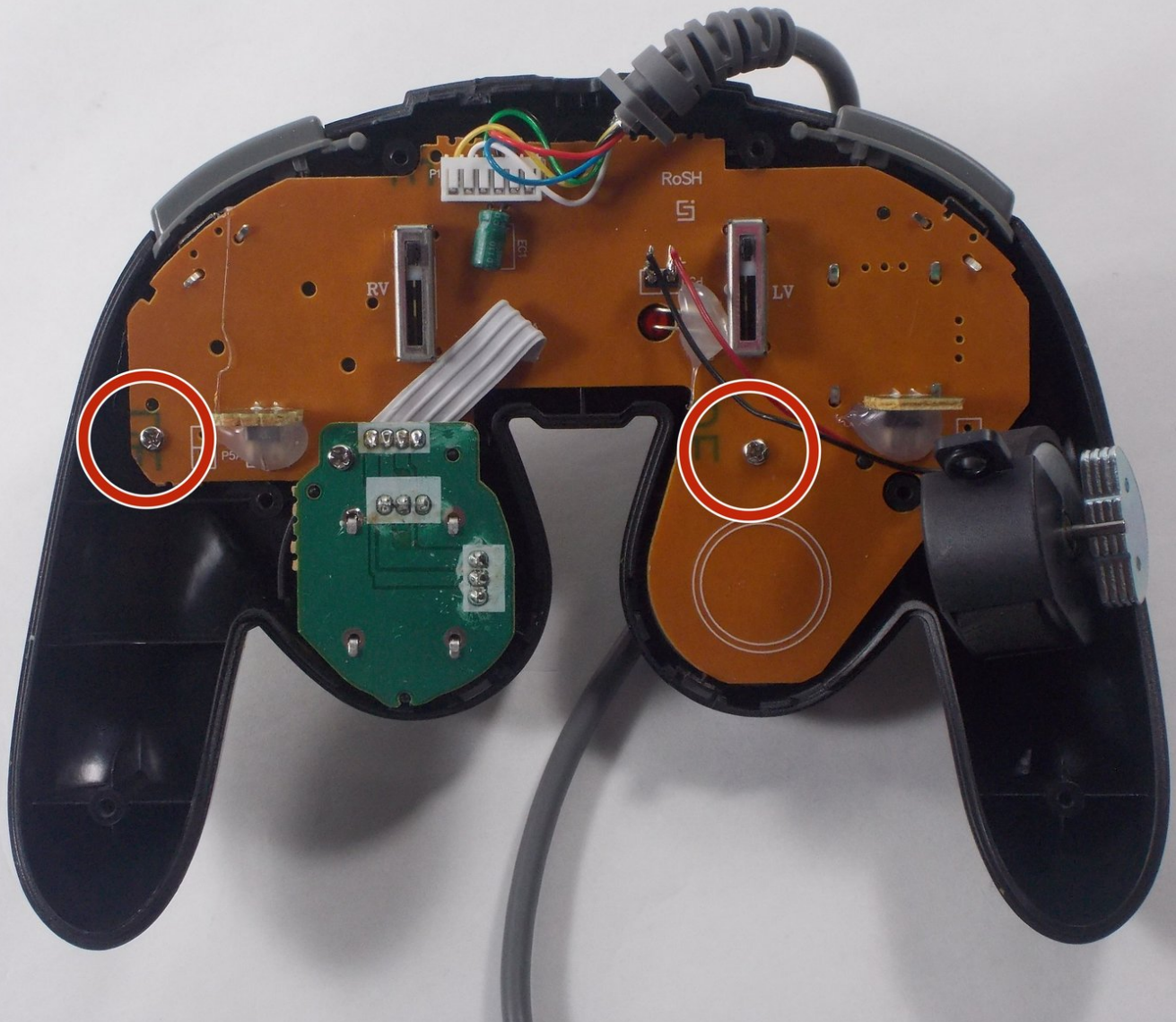




# GameStop GS3 GameCube Controller Buttons Replacement

After many hours of use, the buttons on the...

Written By: Andrew Gonsalves



---

## INTRODUCTION

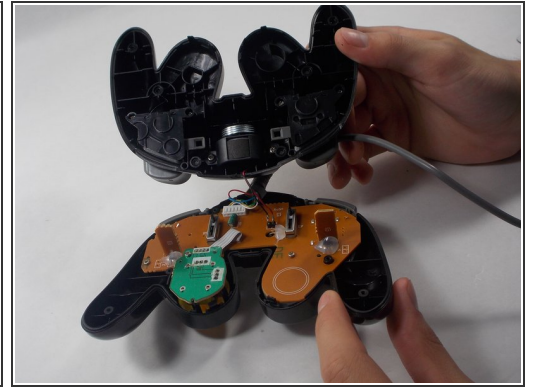
After many hours of use, the buttons on the Gamecube Controller can become too loose or stick. This guide will provide instructions on how to replace the buttons of the GameStop GS3 Gamecube Controller. There are ten total buttons in this controller: left and right triggers, Z, turbo, D-pad, start/pause, A, B, X, and Y.



### TOOLS:

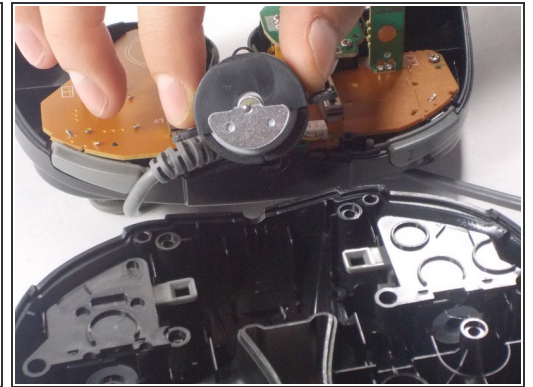
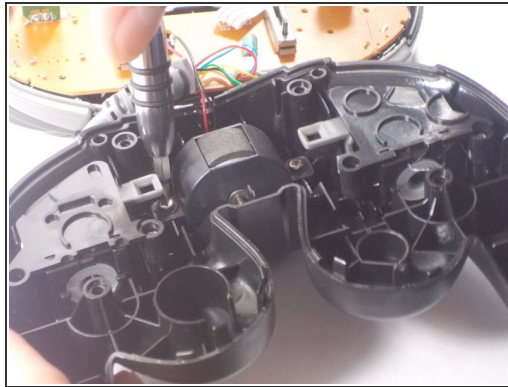
- [Mako Driver Kit - 64 Precision Bits](#) (1)
-

## Step 1 — Back Panel



- First, remove the 6 screws in the back panel and pull the back panel off.
- Separate the halves of the controller. However, be careful when separating due to the little wires that could get mixed up.

## Step 2



- Next, remove the rumble motor by unscrewing the 2 screws connecting it.

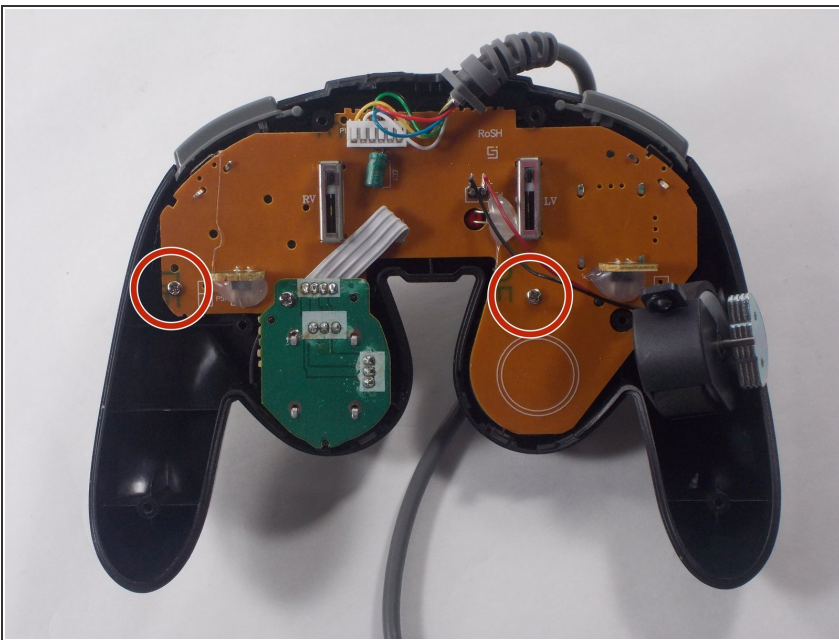


### Step 3



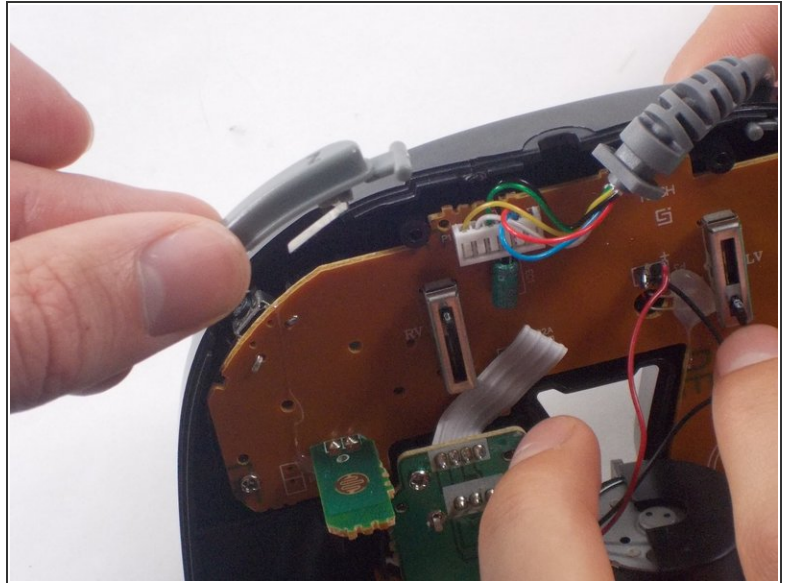
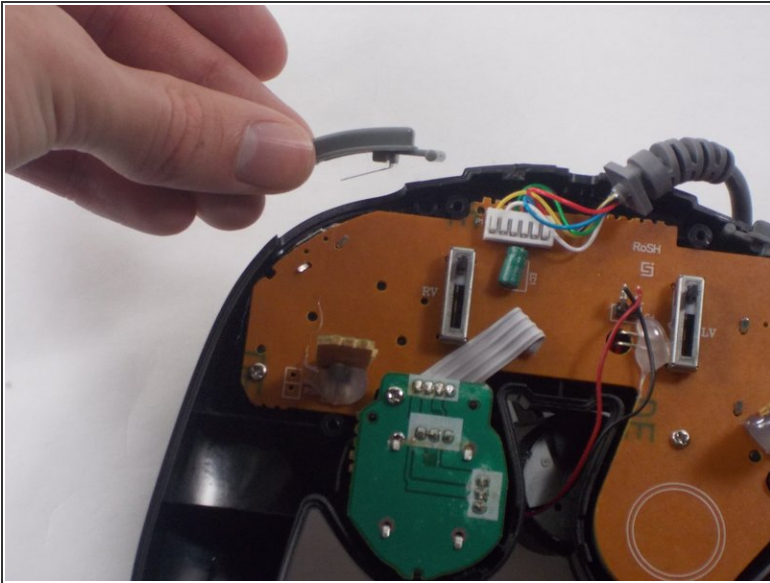
- Finally remove the screws holding in the right and left triggers. It's easiest to hold the trigger together as shown in the third picture. Remove both the left and right trigger, and then you have successfully removed your back panel.

### Step 4 — Buttons



- Hold the controller as shown in the picture so that you can remove the circuit board.
- ⓘ The locations of screws to be removed in future steps are shown in red.

## Step 5



- Now that the back panel has been removed it should be easy to snap off the "Z" and "TURBO" buttons as shown in the images.

## Step 6



- Remove the two screws on the motherboard so that you can remove the motherboard from the front cover.



## Step 7



- i Now your controller front panel should look similar to this.
- Remove the rubber backings on the buttons shown in red.
- ★ Snap them back in when you go to put the controller back together.

## Step 8



- Remove the buttons and you should have what you see here.

To reassemble your device, follow these instructions in reverse order.