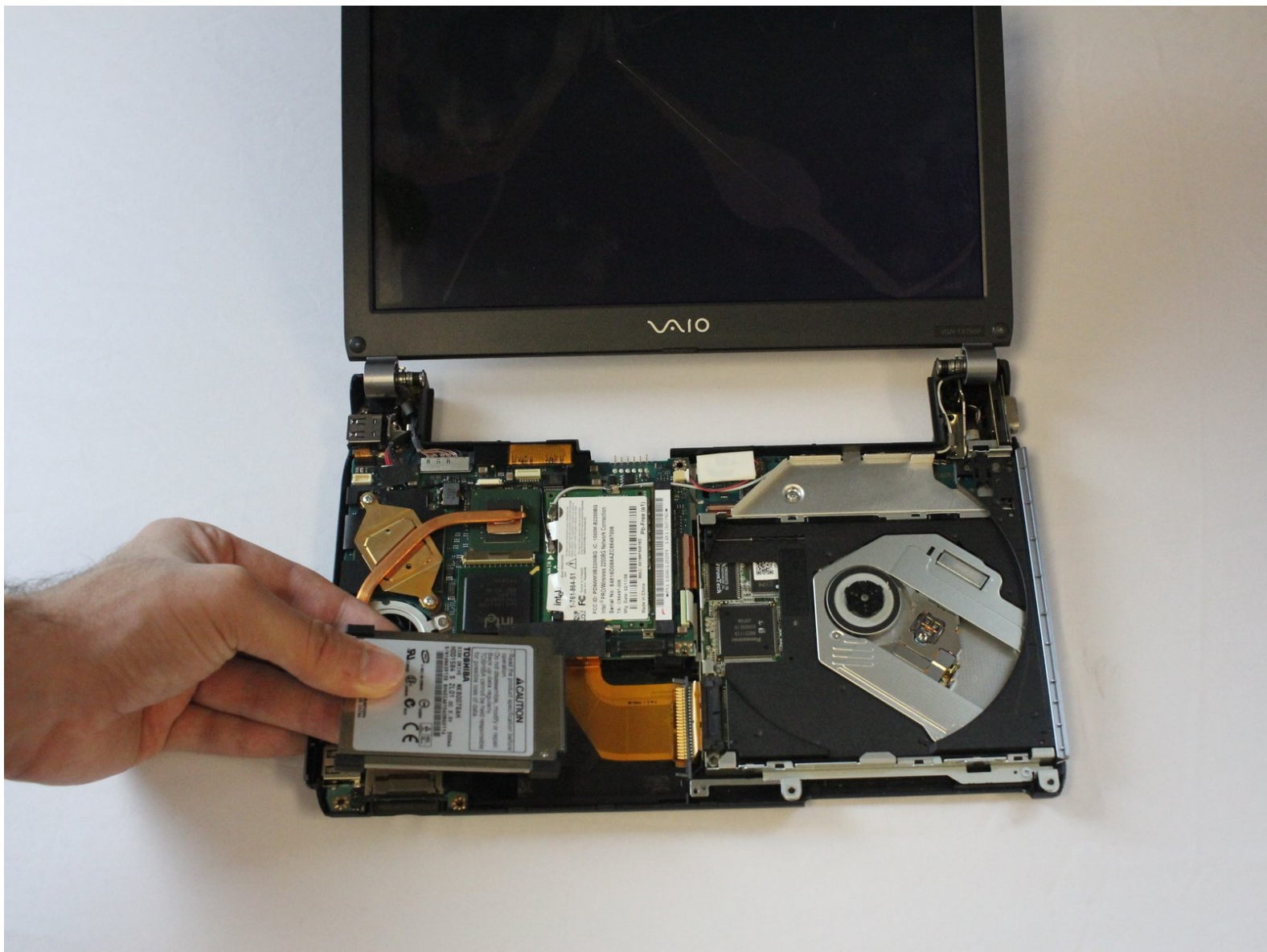




Sony Vaio PCG-4G1L Hard Drive Replacement

A demonstration on how to remove and replace the Hard Drive for the Sony Vaio PCG-4G1L device.

Written By: Diego Fabiano



INTRODUCTION

Common reasons for removing the Hard Drive could be exposure to power surges or magnets, device crashes, blue screens. error messages while moving files, or losing files without notice.

In this guide, you will learn how to replace the Hard Drive of your device. Please remember to unplug the charging cable, since it could result in electric shock.



TOOLS:

- [64 Bit Driver Kit](#) (1)
- [Tweezers](#) (1)
- [iFixit Opening Tools](#) (1)



PARTS:

- [1 TB SSD / Upgrade Bundle](#) (1)
- [250 GB SSD / Upgrade Bundle](#) (1)
- [500 GB SSD / Upgrade Bundle](#) (1)
- [2 TB SSD](#) (1)

Step 1 — Battery



- Turn off the computer and disconnect the charging cable.

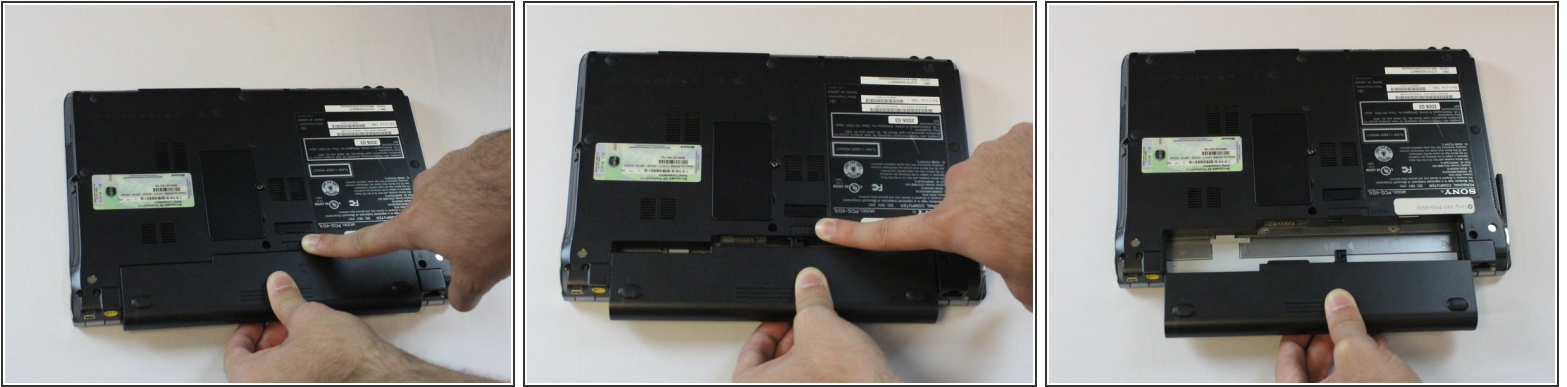
⚠ Failing to unplug the cable can result in electric shock.

Step 2



- Slide battery release toggle switch towards the "RELEASE" print.

Step 3



- Apply pressure with your thumb on the grip.
- Pull the battery out while simultaneously holding the battery release toggle switch in the release position.


Step 4 — Keyboard



- Remove one 5 mm Phillips #1 pan head screw, in the middle of the laptop, using a Bit Driver with Phillips PH1 bit.

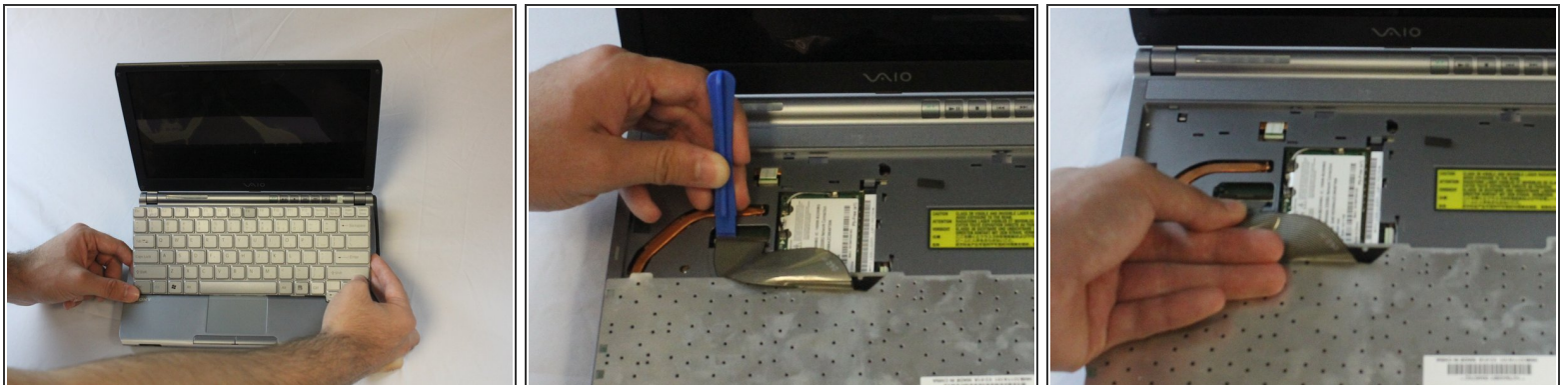
Step 5




 Be sure to pry the plastic opening tool under the keyboard, rather than under the keys. Otherwise, some keys could get harmed.

- While using a plastic opening tool, carefully lift the keyboard by inserting the tool under the edge.

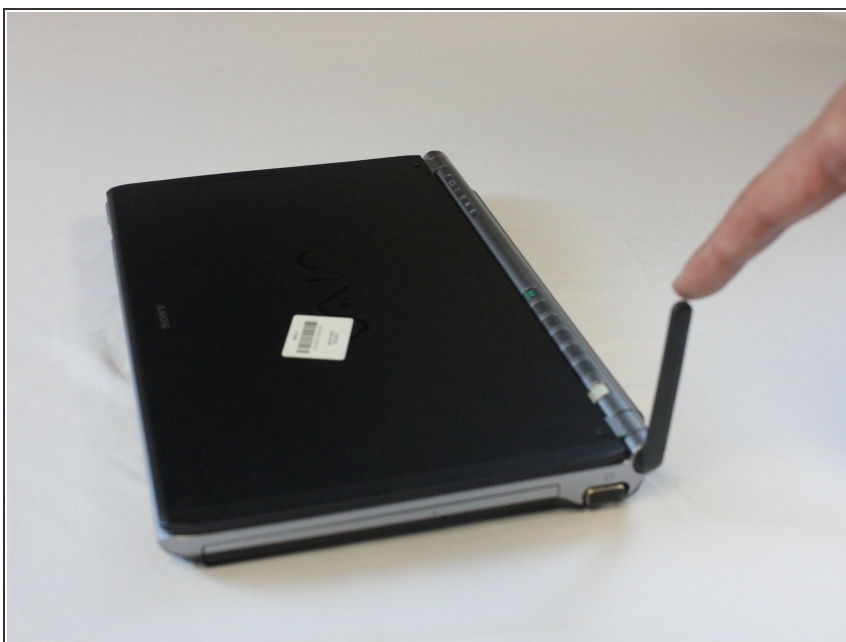
Step 6



 Do not pull the keyboard too far away, as a ribbon cable is still attached. Failing to do so can cause damage to the ribbon cable or the connector.

- Use the plastic opening tool to release the clamp.
- Using slight pressure, remove the ribbon cable with your fingers.

Step 7 — Network Antenna



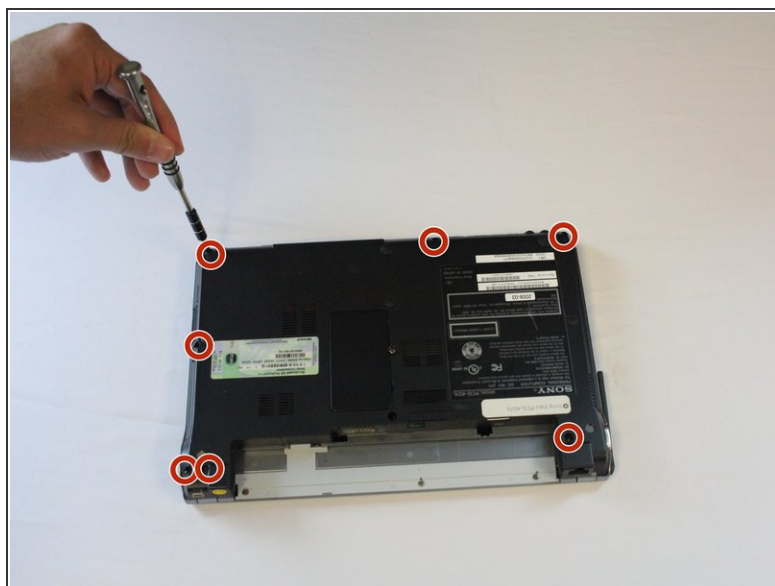
- Swivel the Network Antenna up so that it points upward.

Step 8



- Pinch thumb and index finger at the Network Antenna's base.
- ⚠ Make sure not to bend the Network Antenna. Failing to do so can cause damage to the antenna.
- Pull the Network Antenna off.

Step 9 — Plastic Casing



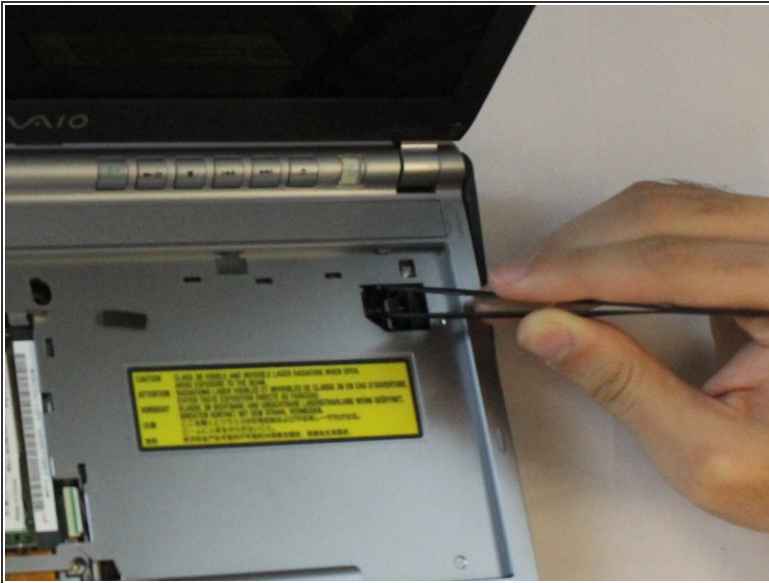
- Remove seven 5 mm Phillips #1 pan head screws with a Bit Driver, using a Phillips PH1 bit.

Step 10



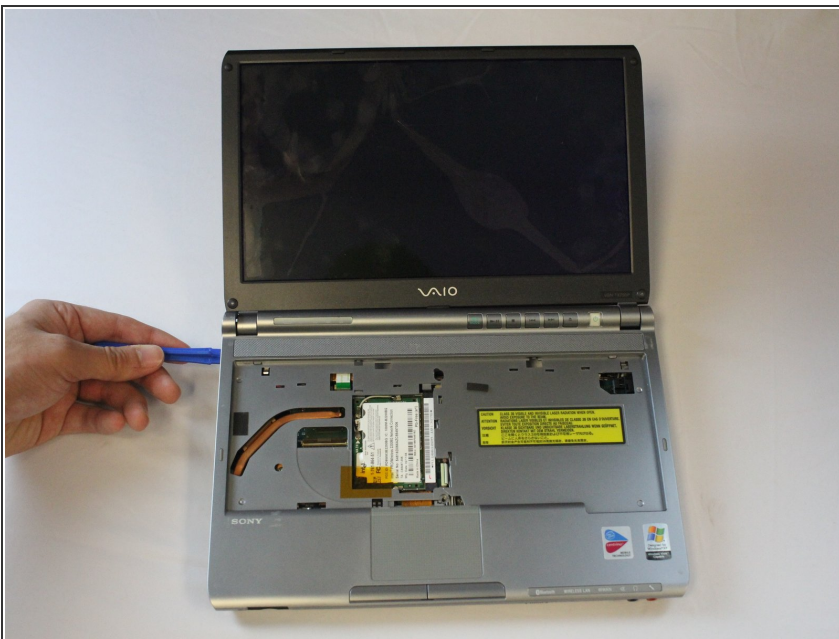
- Remove one 7 mm Phillips #1 Pan Head Screw by using a Bit Driver with Phillips PH1 bit.


Step 11



- Disconnect the cable by using the precision tweezers.
- Slowly pry out the ribbon cable by using the plastic opening tool.

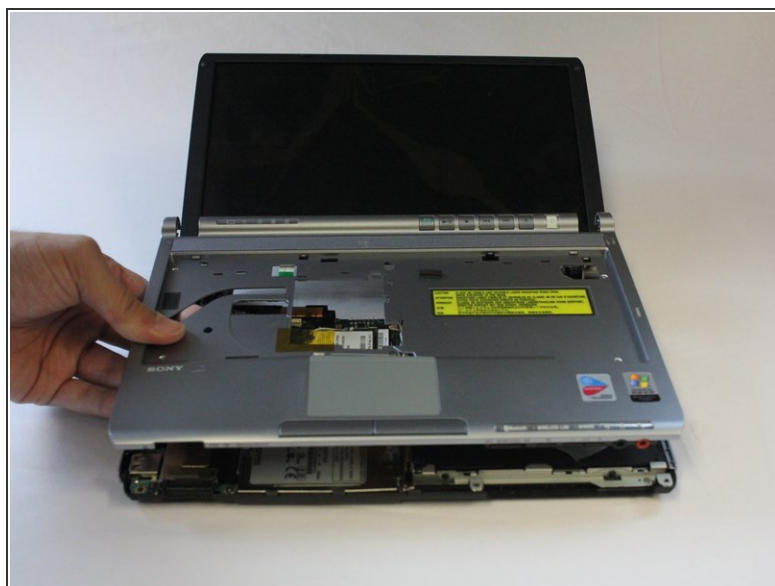
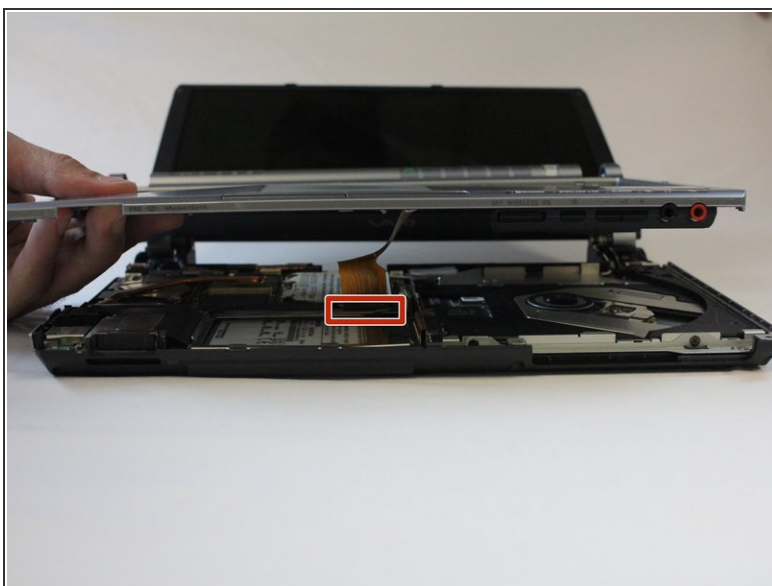
Step 12



 Do not pull the plastic cover too far away, as a ribbon cable is still attached. Failing to do so can cause damage to ribbon cable or the connector.

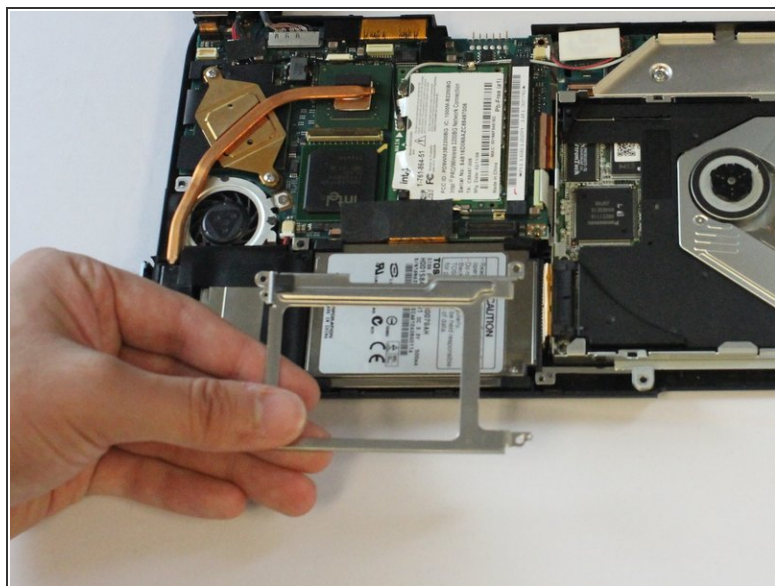
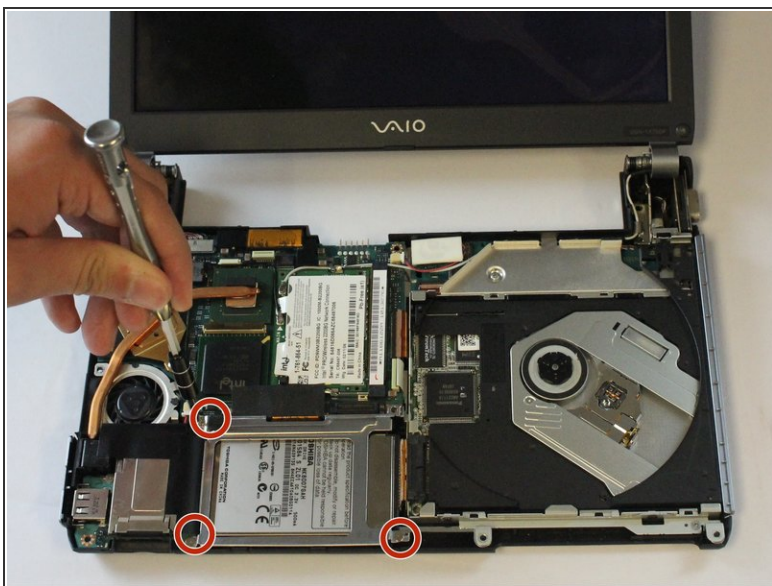
- Remove the plastic cover by inserting the plastic opening tool around the edge.

Step 13



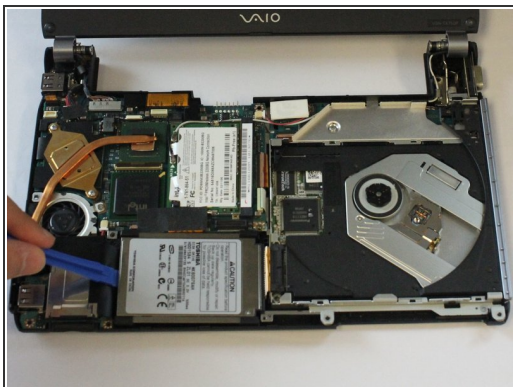
- Disconnect the ribbon cable by pulling straight up with your fingers.

Step 14 — Hard Drive



- Remove three 5 mm Phillips #0 flat head screws using a Bit Driver with a Phillips PH000 bit.
- Remove the bracket with your fingers.

Step 15



- Using the plastic opening tool, pry out the side of the hard drive.
- ⓘ The hard drive should easily disconnect from the connector.
- Slide the hard drive out, towards the left side of the case, while your fingers apply pressure to the ribbon cable.

To reassemble your device, follow these instructions in reverse order.