



Magellan Roadmate 9055-LM Back Panel Disassembly

This Guide will show you how to safely remove the back panel of the GPS

Written By: YuChe Chang



INTRODUCTION

Removing the back panel is the required step to replace anything for the gps



TOOLS:

- [iFixit Opening Tools](#) (1)
 - [Phillips #0 Screwdriver](#) (1)
-

Step 1 — Magellan Roadmate 9055-LM Back Panel Disassembly



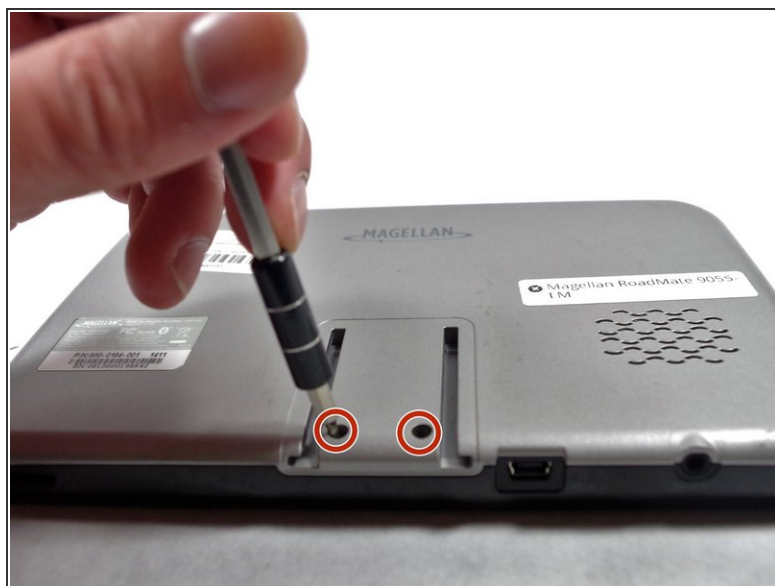
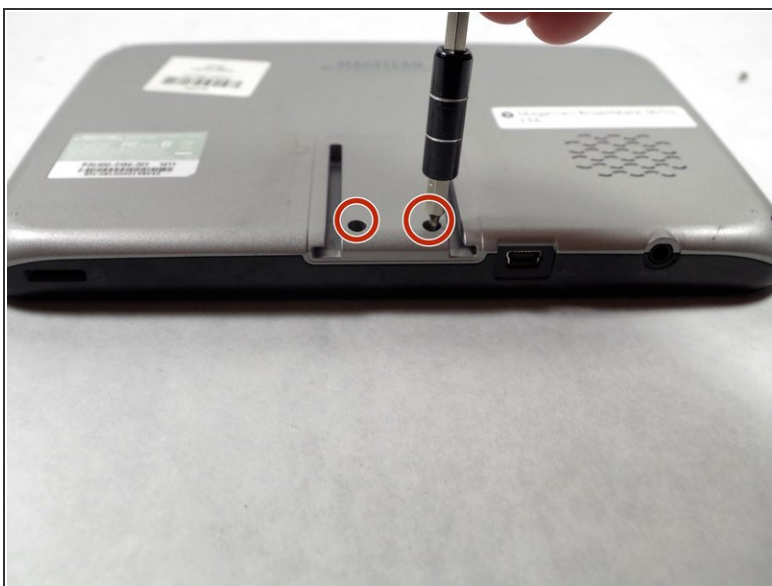
⚠ Flip your device with back panel facing up.

Step 2



- Unscrew four Phillips #0 screws from the back panel.

Step 3



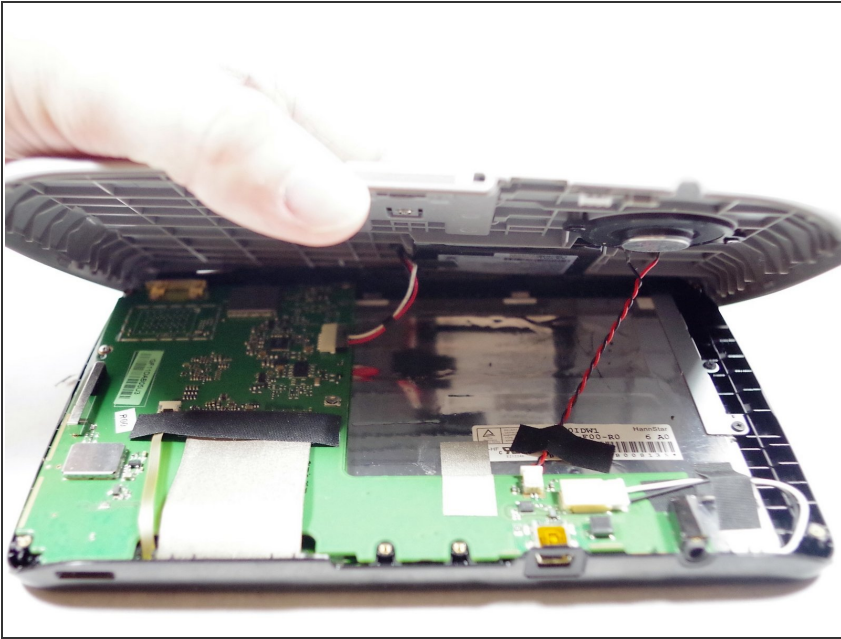
- Unscrew two Phillips #0 screws from the back panel.

Step 4



- Use a plastic opening tool to pop the right side of the panel.

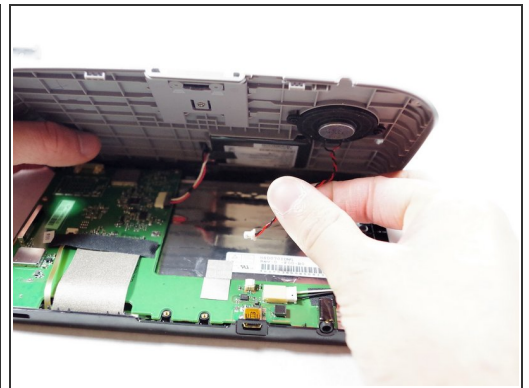
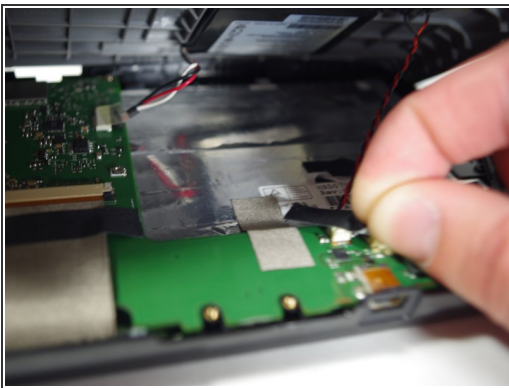
Step 5



⚠️ Lifting the back panel too quickly or forcefully may damage the speaker cable and battery cable, which are still attached underneath.

- Gently lift up the back panel.

Step 6




- Remove the tape.
- Unplug the cable for the speaker.

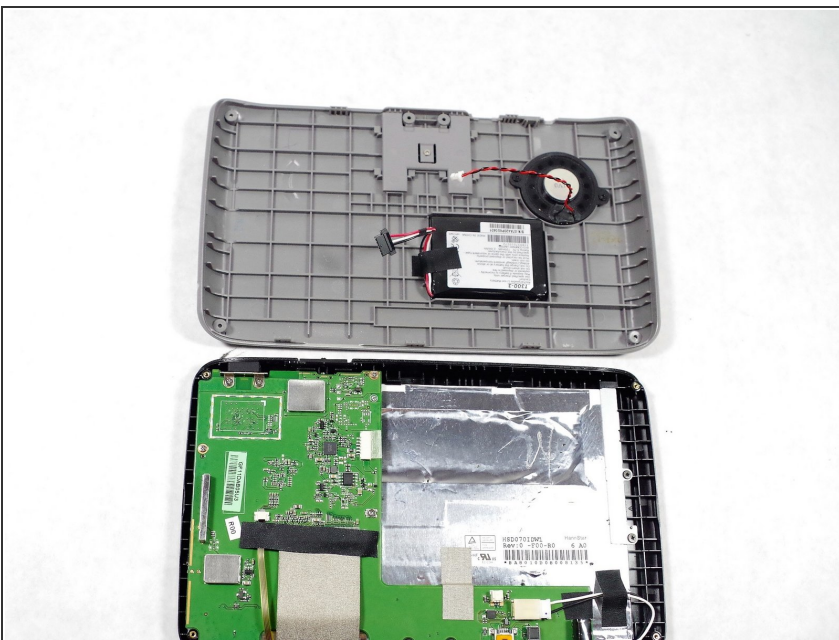
Step 7



- Remove the cable of the battery.

 Tape removal is not necessary.

Step 8



- Place the back panel gently on the table.

To reassemble your device, follow these instructions in reverse order.