



Garmin Nuvi 2589LMT Motherboard Replacement

A simple guide to replace your Garmin Nuvi 2589LMT motherboard.

Written By: Adam Ferraro



INTRODUCTION

If your device is not turning on, you may need to replace your motherboard. Use this guide to replace a defective motherboard in your Garmin NUVI 2589LMT device. This replacement guide requires more time than replacing the other components in your GPS, since this guide involves soldering.



TOOLS:

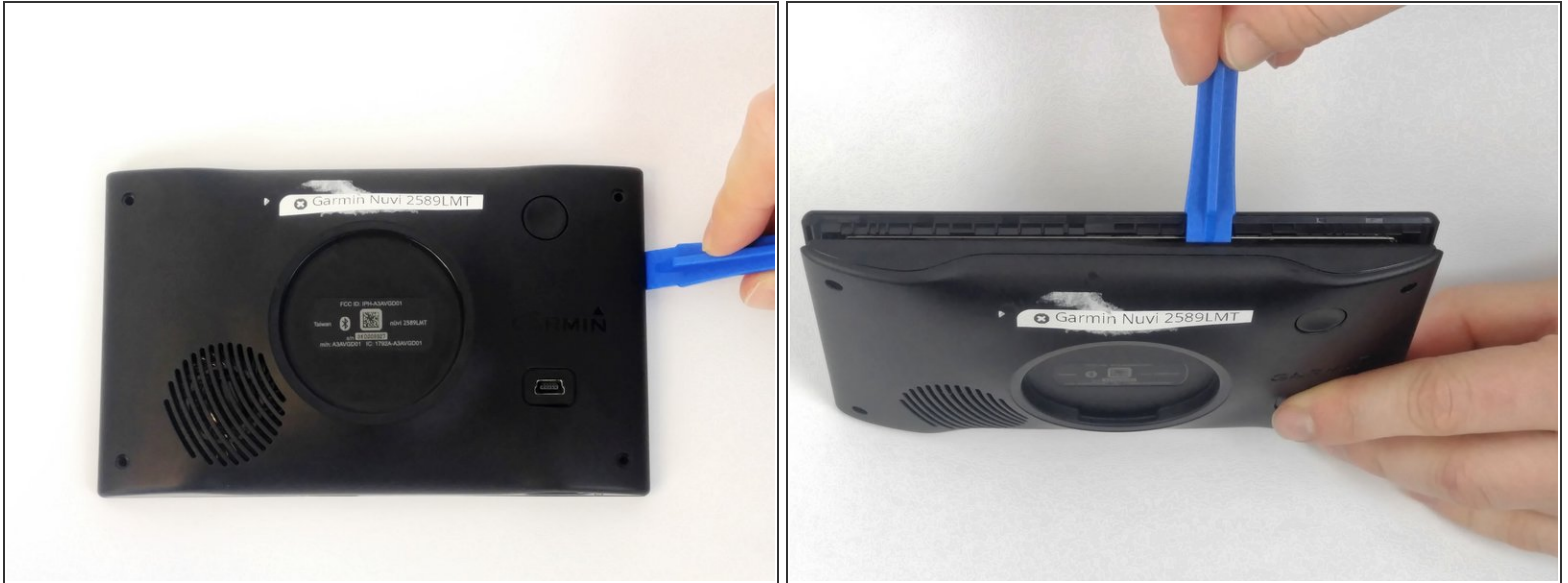
- [T5 Torx Screwdriver](#) (1)
 - [iFixit Opening Tools](#) (1)
 - [Tweezers](#) (1)
 - [Soldering Iron](#) (1)
-

Step 1 — Back Panel Assembly



- Using the T5 Torx Screwdriver, remove all 4 of the 5.7mm screws from the back of the device.

Step 2



- Using the plastic opening tools, pry the shorter sides of the device apart.
 - Once a gap has formed at the top of the device, insert the opening tool into the gap and slide it along the top of the device. Repeat for the bottom edge of the device to separate the LCD screen from the back.
- ⚠ Do not disconnect or tear the ribbon wiring, located at the bottom of the motherboard, when removing the back of the device.

Step 3 — Motherboard



- Using the angled tweezers, grip the red, black, and green wires connecting the battery to the motherboard, then gently lift away from the motherboard.

Step 4



- Using the tweezers, gently pull the ribbon wiring near where it connects to the motherboard to disconnect it from the motherboard.

Step 5



- Using tweezers, remove the tape covering the speaker connection to the motherboard.

Step 6



- Using a soldering iron, desolder all connections to the motherboard.
- ① Learn how to solder and desolder [here](#).

Step 7



- Using the T5 Torx Screwdriver, remove all 4 of the 4.0 mm screws from the motherboard.

Step 8



- Using the plastic opening tools gently pry the motherboard away from the case.

To reassemble your device, follow these instructions in reverse order.