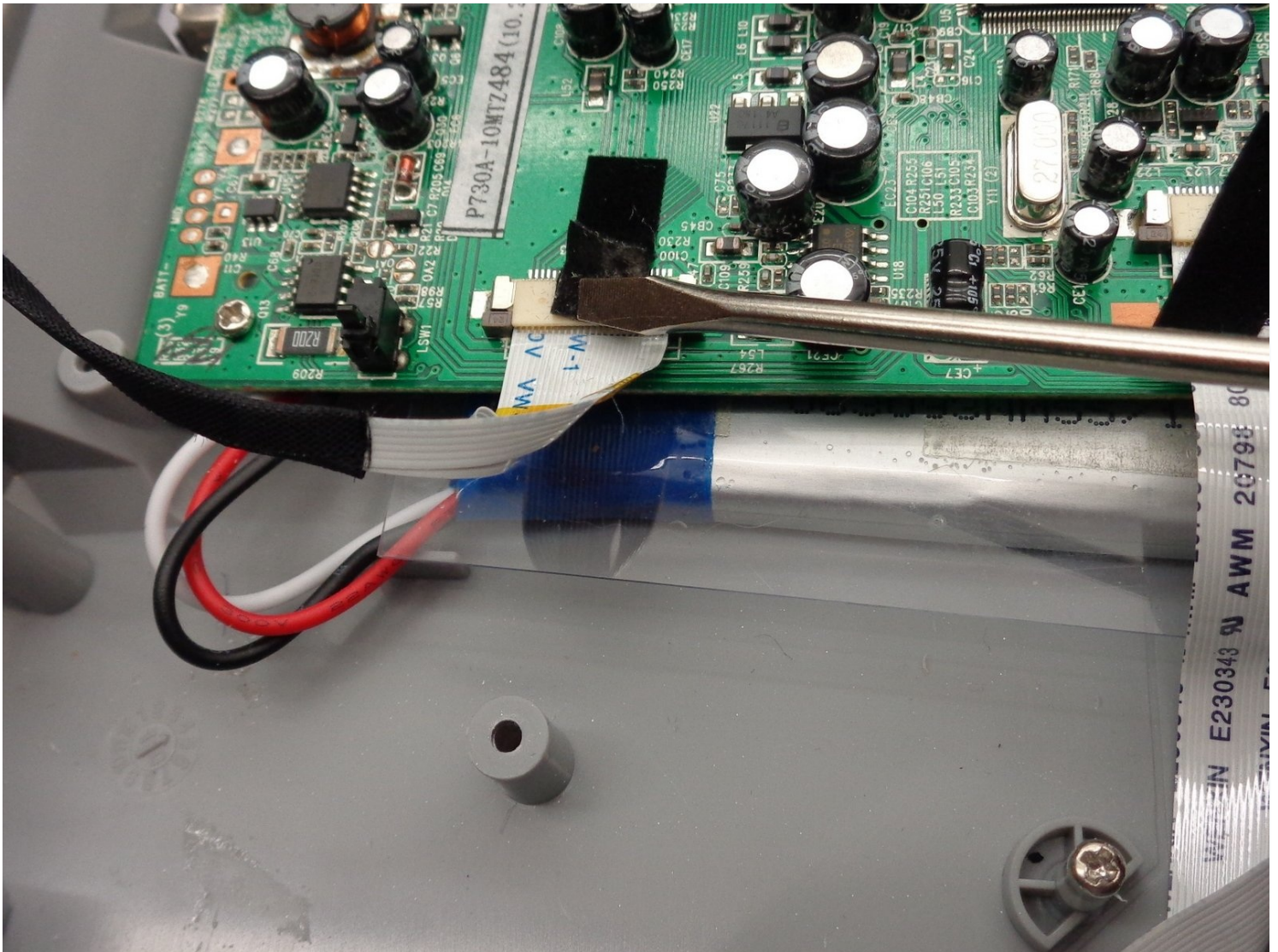




Sylvania SDVD9004 Motherboard Replacement

This guide uses incorrect tools. Use an ESD...

Written By: Sarah Henry



INTRODUCTION

This guide uses incorrect tools. Use an ESD safe tool, such as a nylon spudger, to complete steps that involve delicate internal components.

TOOLS:

Heavy-Duty Spudger (1)

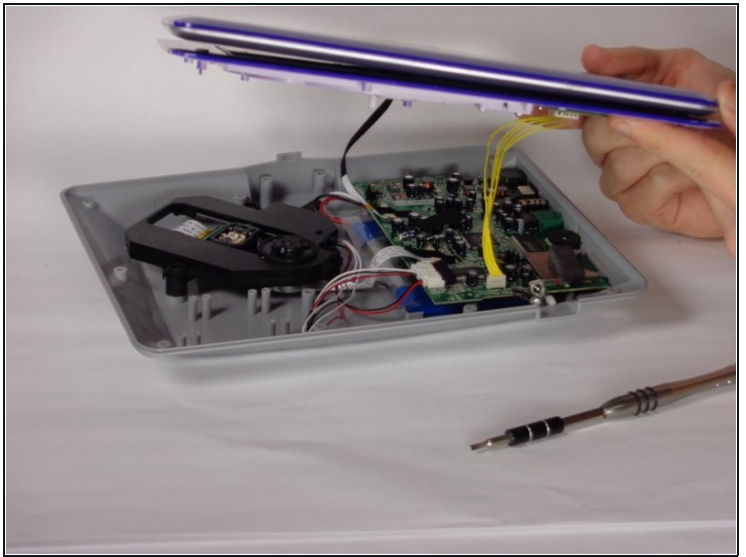
Phillips #0 Screwdriver (1)

Step 1 — Back cover



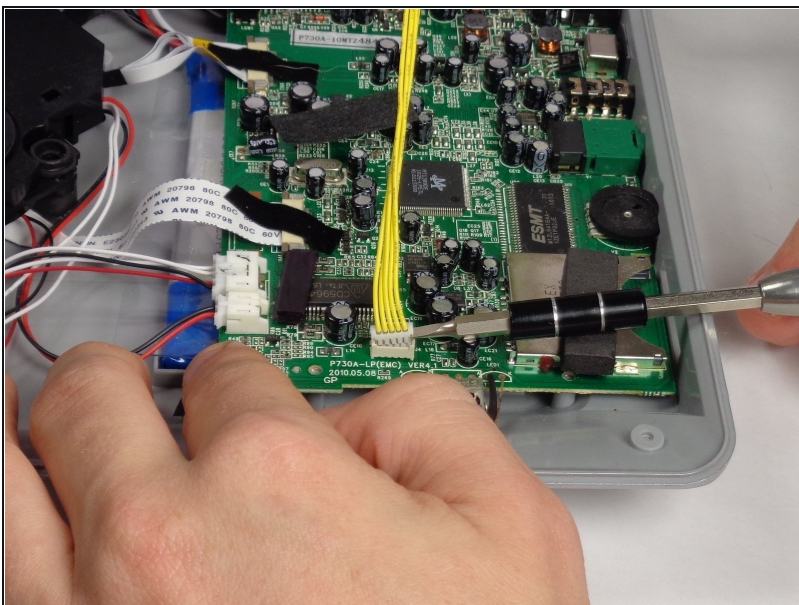
- Remove ten 7mm Phillips #0 screws.
- Remove four 5mm Phillips #0 screws.

Step 2



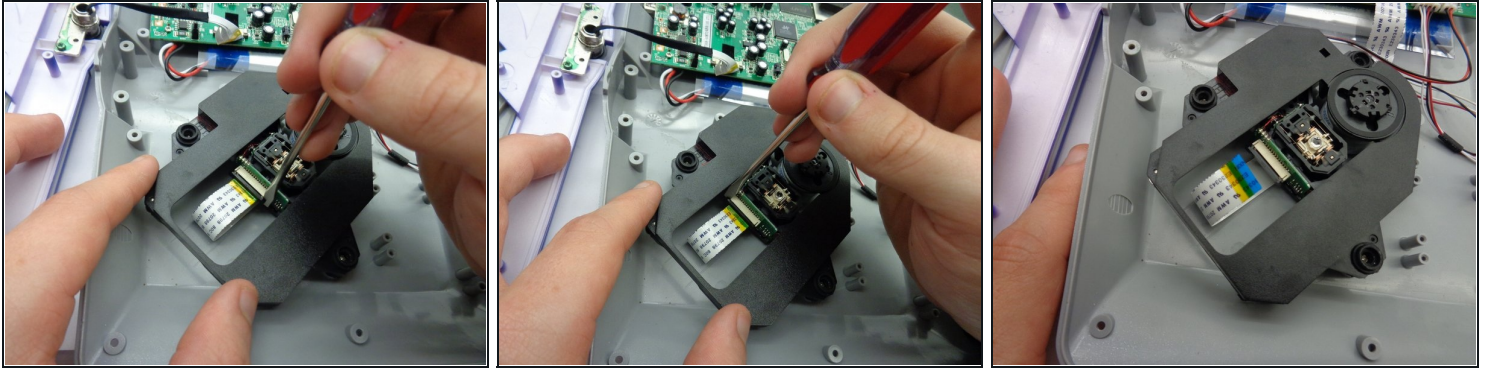
- Flip the device over.
- Lift the top.

Step 3



⚠ This guide uses incorrect tools. Use an ESD safe tool, such as a nylon spudger, to complete this step.

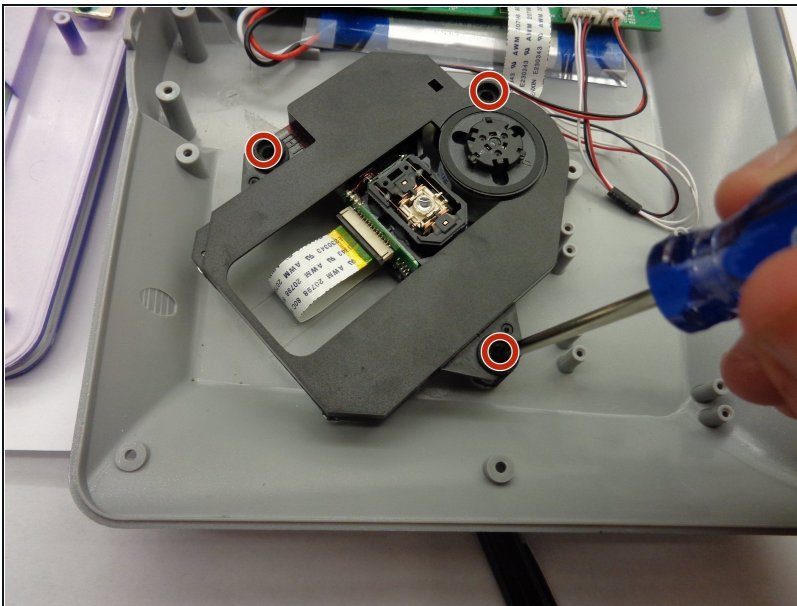
Step 4 — CD Drive



⚠ This guide uses incorrect tools. Use an ESD safe tool, such as a nylon spudger, to complete this step.

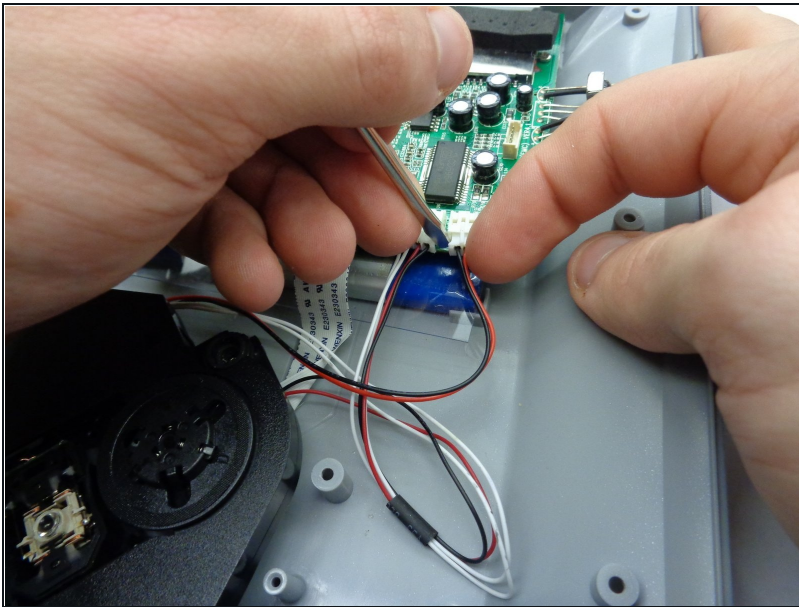
- Wedge head lightly between drive and bottom of tab.
- Repeat on both sides.
- Gently pull out ribbon

Step 5



- **Drive Removal**
- Use Philip's screw driver to remove three 7 mm screws.
- ⓘ Rotate counter clockwise to loosen screws.

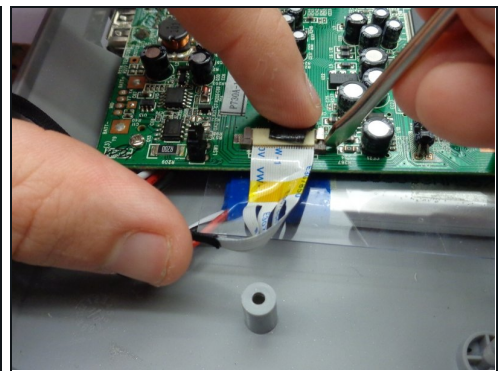
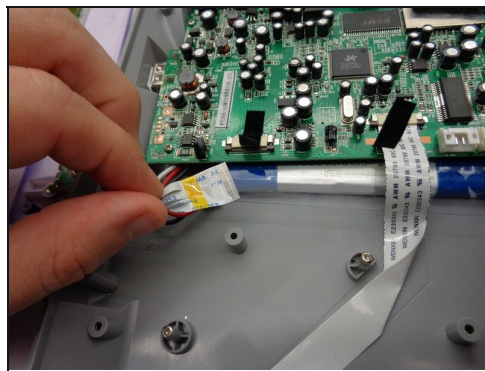
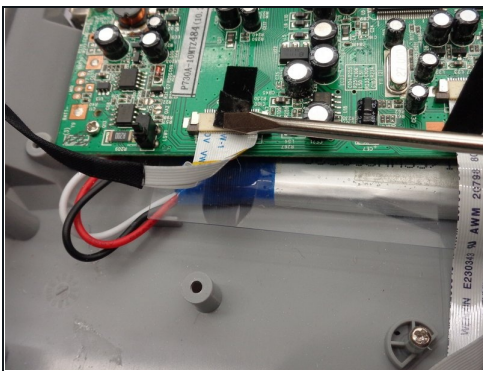
Step 6



⚠ This guide uses incorrect tools. Use an ESD safe tool, such as a nylon spudger, to complete this step.

- Follow the red and black cables to the motherboard point of attachment.
- Use a Flat head screwdriver.
- Place head of driver into the groove of plug and port.
- Wedge on all sides evenly to work out plug slowly.
- Remove small and large plugs.

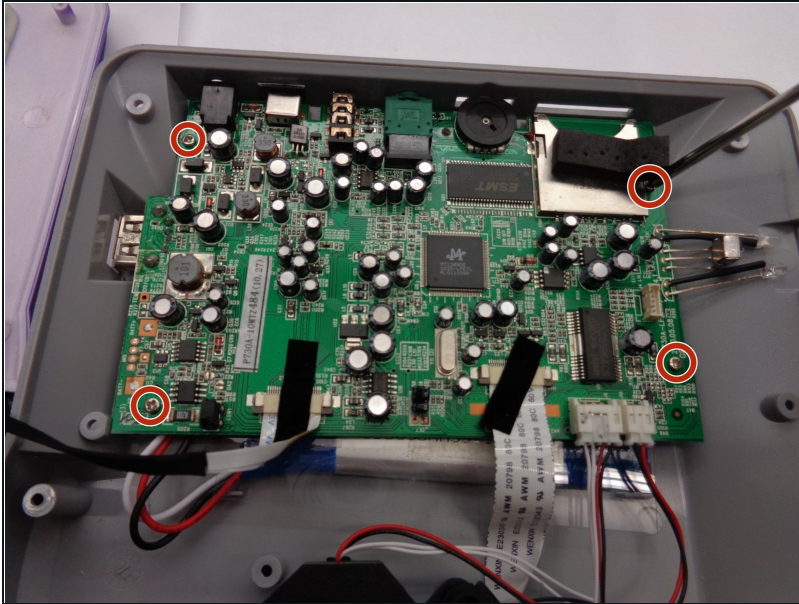
Step 7 — Motherboard



- Remove Ribbon from Rear Panel

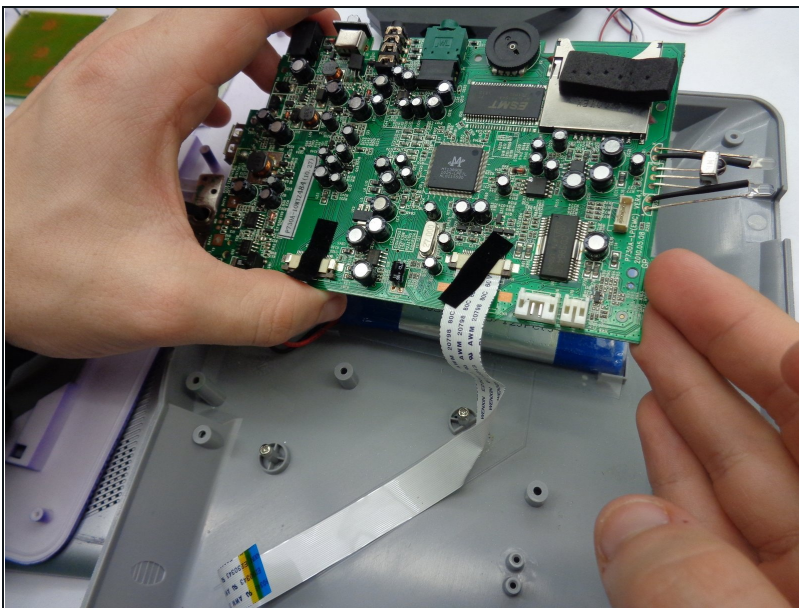
⚠ This guide uses incorrect tools. Use an ESD safe tool, such as a nylon spudger, to complete this step.

Step 8



- **Anchor screw removal**
- Use Philip's head screwdriver
- Place head of driver into screw on mother board.
- Rotate counter clockwise
- Remove all four screws

Step 9



- **Lift motherboard to expose battery**

To reassemble your device, follow these instructions in reverse order.