



# Nikon Coolpix S9700 Flash Housing Replacement

Keep the flash down when not in use with a new flash housing.

Written By: Matt Staubus



## INTRODUCTION

If your flash has become worn out from use and is not staying down, you might need a new flash housing. Performing this repair does not require a great deal of knowledge of the S9700, but will require a steady hand.



### TOOLS:

- [Phillips #000 Screwdriver](#) (1)
  - [iFixit Opening Tools](#) (1)
-

## Step 1 — Battery



- Press the ON/OFF button to power off the S9700.

⚠ Not doing so can damage the S9700 or cause electric shock.

## Step 2



- Place the S9700 upside down
- Place your finger on the battery compartment cover and gently push toward the front of the S9700.
- The cover will open up by itself.

## Step 3



- Push the yellow tab inside the battery compartment in the direction of the arrow. This will allow the battery to spring up.

## Step 4



- Grab the battery and pull out.



## Step 5 — Flash Housing



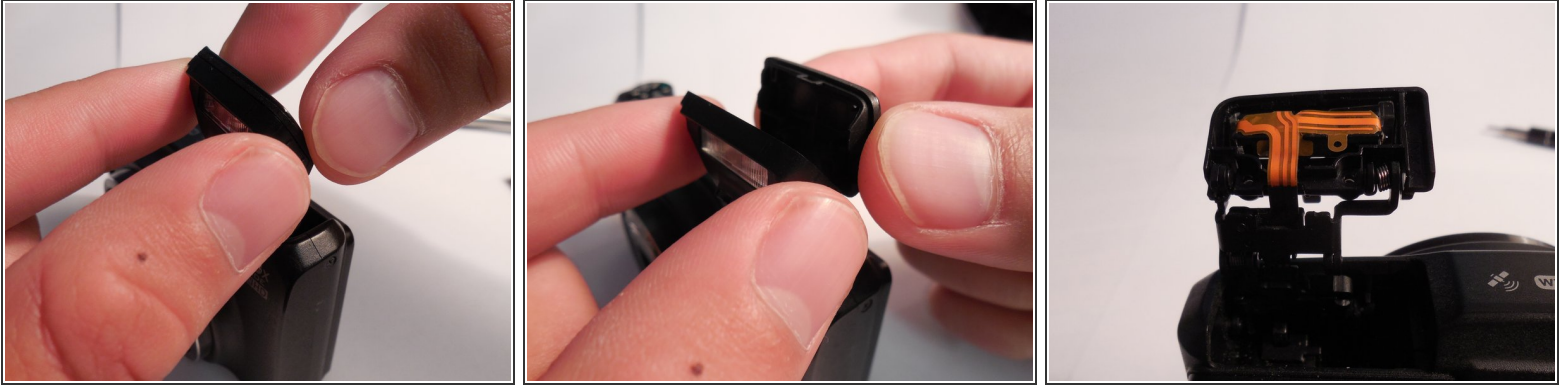
- Place your fingernail or a plastic opening tool in the space between the camera housing and the flash housing.
- Carefully pry up on the flash housing. It will pop up automatically.

## Step 6



- Remove the two 4-mm J000 screws positioned at the bottom of the flash housing.
- The housing will now be hanging only by the ribbon supplying power.

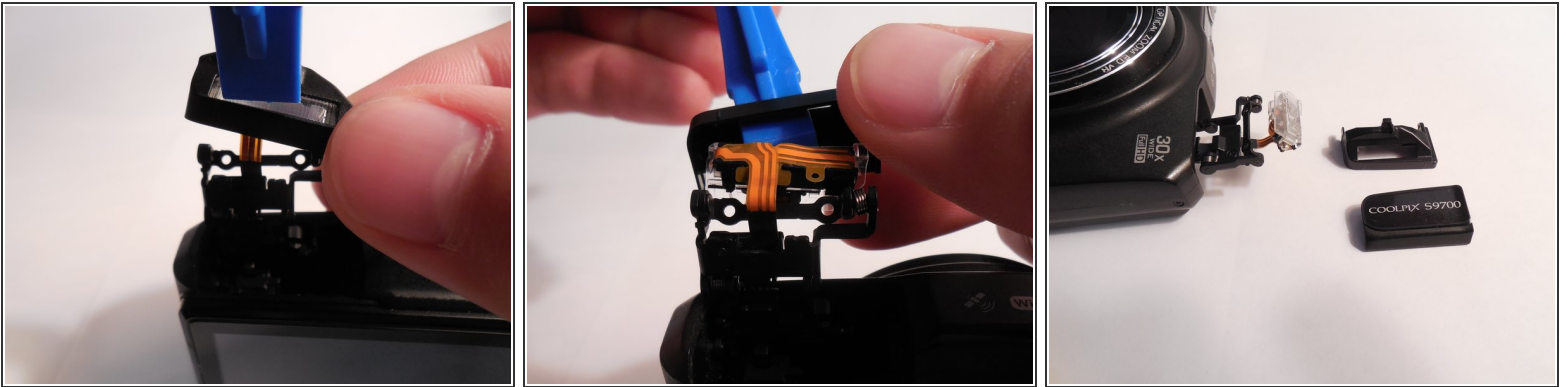
## Step 7



- Using your fingers or plastic opening tool, remove the back half from the front half of the flash housing. The front half will stay on.

⚠ Sudden or large force can rip the flash power supply off.

## Step 8



- Place a plastic opening tool on the clear lens of the flash.
- Gently push on the lens to remove the front half of the flash housing.

To reassemble your device, follow these instructions in reverse order.