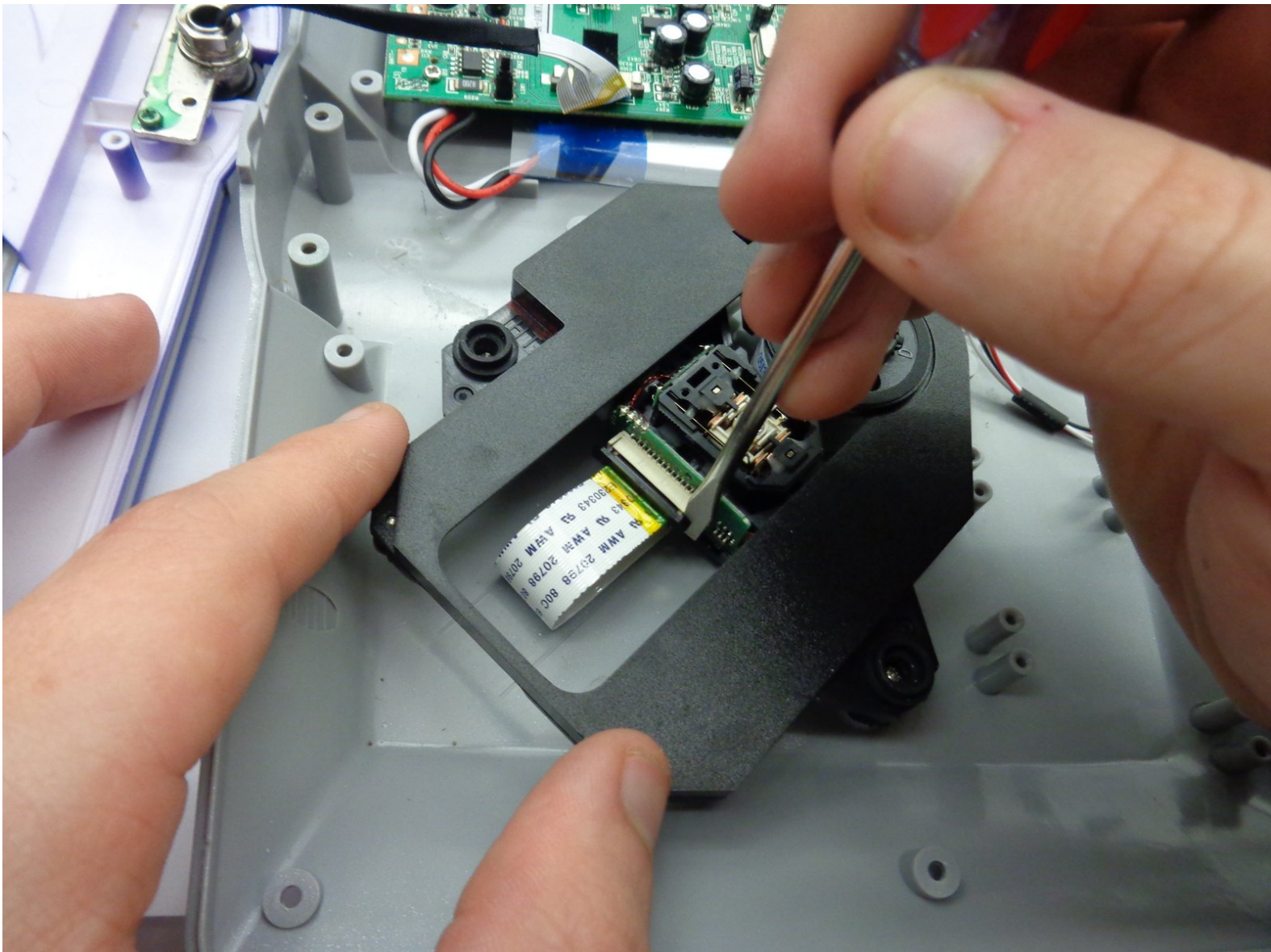




# Sylvania SDVD9004 CD Drive Replacement

This guide will provide a step by step process on how to remove and replace the CD Drive.

Written By: Sarah Henry



---

## INTRODUCTION

This guide will provide steps on how to remove and replace a CD drive in this DVD player. It is important to have all tools ready and have completed prerequisite guides.

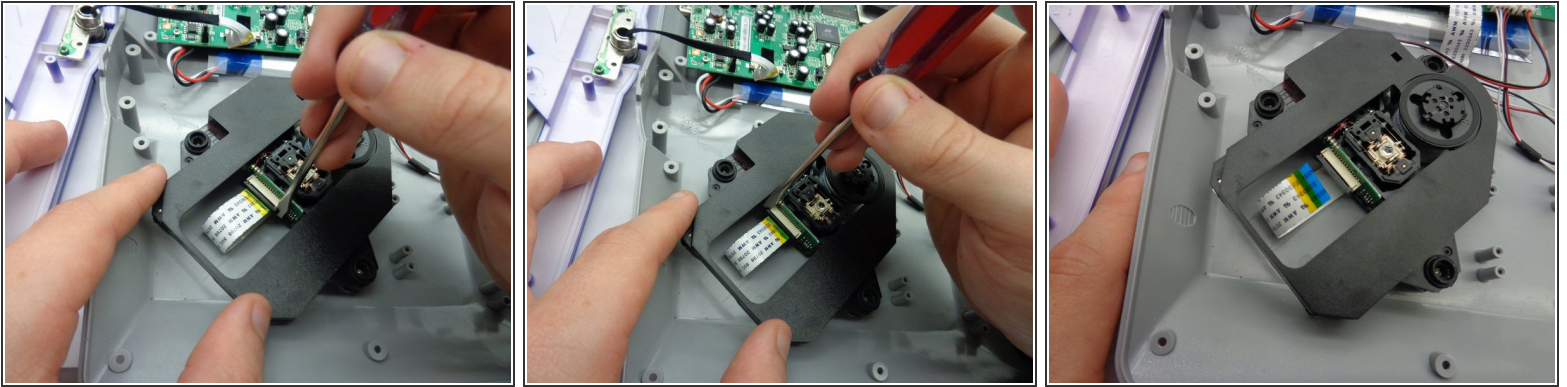
This guide uses incorrect tools. Use an ESD safe tool, such as a nylon spudger, to complete steps that deal with delicate internal components.




### TOOLS:

- [Phillips #0 Screwdriver](#) (1)
  - [Heavy-Duty Spudger](#) (1)
-

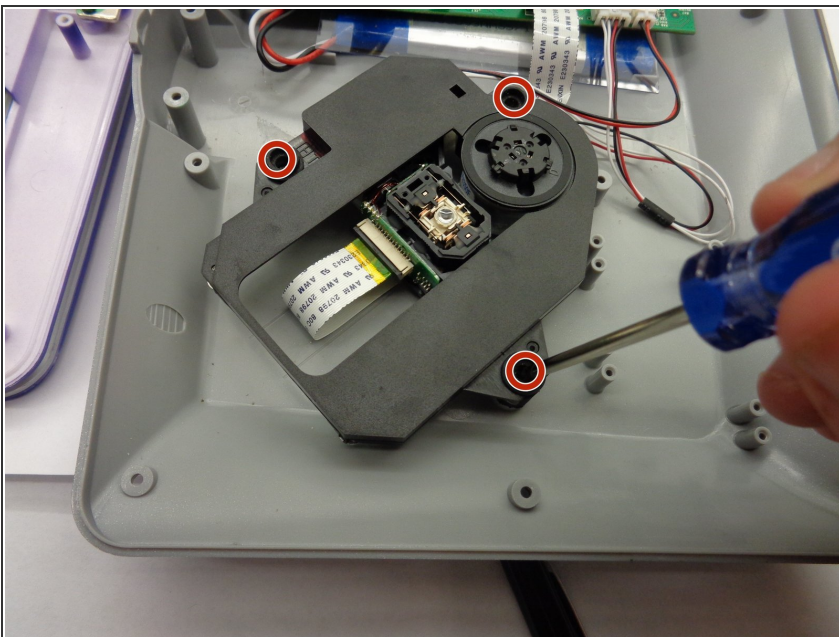
## Step 1 — CD Drive



 This guide uses incorrect tools. Use an ESD safe tool, such as a nylon spudger, to complete this step.

- Wedge head lightly between drive and bottom of tab.
- Repeat on both sides.
- Gently pull out ribbon

## Step 2

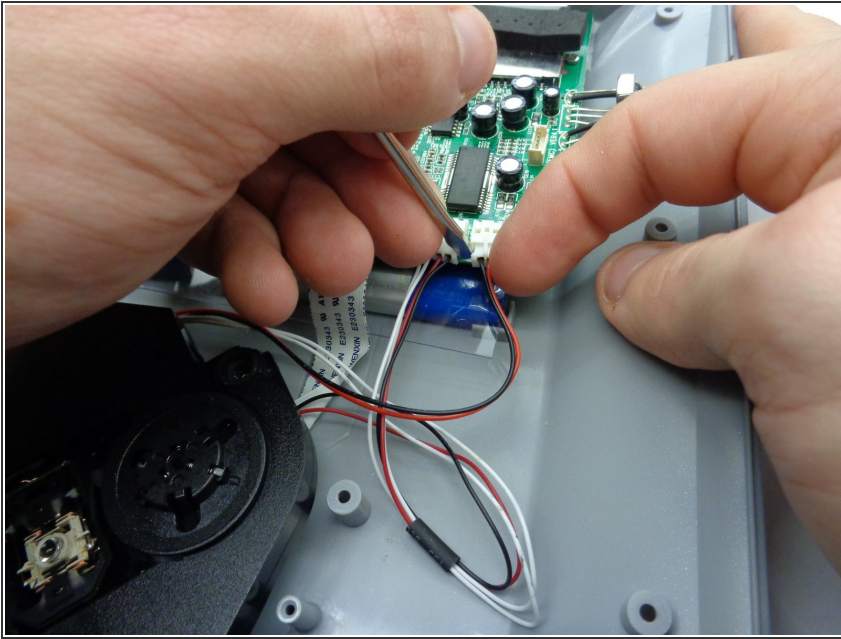


### ● Drive Removal

- Use Philip's screw driver to remove three 7 mm screws.
- ⓘ Rotate counter clockwise to loosen screws.



## Step 3



- ⚠ This guide uses incorrect tools. Use an ESD safe tool, such as a nylon spudger, to complete this step.
- Follow the red and black cables to the motherboard point of attachment.
  - Use a Flat head screwdriver.
  - Place head of driver into the grove of plug and port.
  - Wedge on all sides evenly to work out plug slowly.
  - Remove small and large plugs.

To reassemble your device, follow these instructions in reverse order.