



# Nikon Coolpix S9700 Memory Card Replacement

Remove the memory card of your S9700 to install a new one or use it in another device.

Written By: Matt Staubus



## INTRODUCTION

Removing your memory card will allow you to replace it with a new one, access the S9700's internal memory, or remove the current data from it. It does not require extensive knowledge or special tools.

## Step 1 — Memory Card



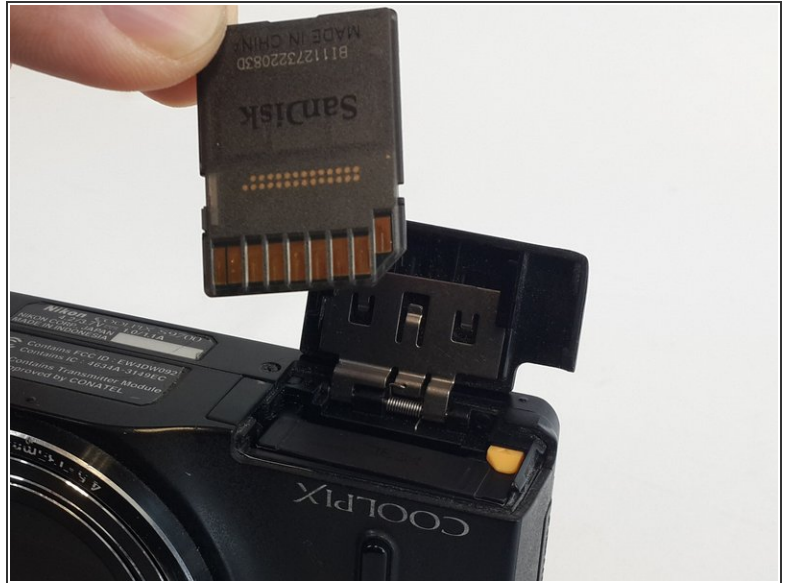
- Power off the S9700 and situate it so that it is upside down.
- Place your finger on the compartment door.
- Gently push toward the front of the S9700.
- The compartment door should spring open by itself.

## Step 2



- Locate the memory card. Be careful not to mistake it for the battery.
- Push down on the memory card until it won't go down further. Don't push too hard to avoid damaging your camera
- Release your finger and the card will pop up out of its compartment.

## Step 3



- Grab your memory card with two fingers.
- Gently pull up and your memory card will come out.

To reassemble your device, follow these instructions in reverse order.