



# Samsung NP-N102S-B05PH Hard Drive Replacement

In this guide, we will demonstrate how to...

Written By: Daniel Rudzik



# INTRODUCTION

In this guide, we will demonstrate how to replace the hard drive of your Samsung NP-N102S-B05PH laptop.

Replacing the hard drive is a quick way to solve any issues resulting from common hard drive issues including; a slow startup, random crashes, corrupted files, and problems with opening files and media. A faulty drive can result from many things, including running at total or near-full capacity.

If the hard drive has been tested and is causing issues, it's a good idea to replace it and possibly upgrade storage capacity.

Before beginning this repair, power off your laptop and unplug your device from the power adapter.

## TOOLS:


Phillips #0 Screwdriver (1)  
iFixit Opening Tool (1)  
Anti-Static Wrist Strap (1)

## PARTS:

2.5" SATA Hard Drive (1)  
*320GB S-ATA II Hard Drive (5400RPM)*

## Step 1 — Hard Drive



-  Before replacing a hard drive, have a backup of original files if files are needed to be recovered afterward.
- Power down your laptop, and position the laptop with the bottom cover facing upwards.

## Step 2



- Using a Phillips #0 screwdriver, remove the nine 6.5 mm screws.

## Step 3

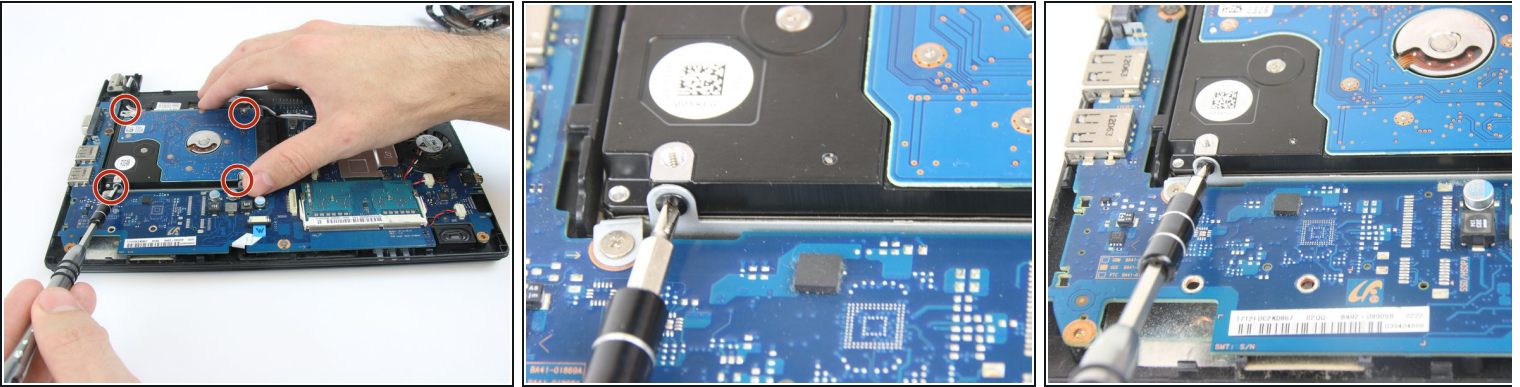


- Use an opening to pry off the bottom cover, clips.

**⚠ Potential for device damage. Before proceeding, be sure to be grounded, as existing static can be transferred and cause significant damage to the device. Wear an anti-static wristband for additional protection.**

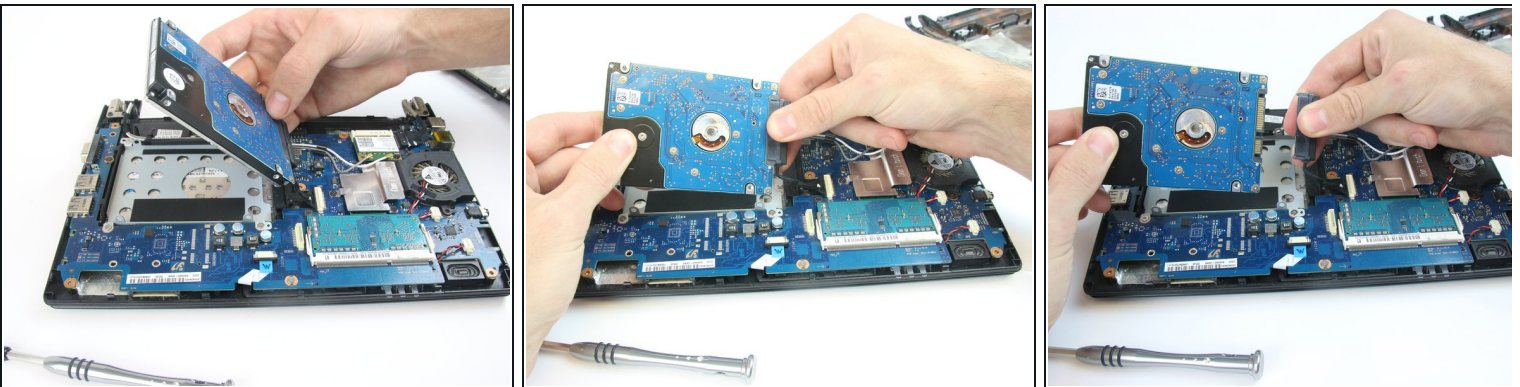


## Step 4



- Use a Phillips #0 screwdriver to remove the four 4.5 mm bracket screws holding the hard drive onto the motherboard.
- ☑ Take care not to remove the screws holding the bracket to the motherboard, as you will need that bracket to attach the next hard drive.

## Step 5



- Lift the hard drive up and gently pull off the SATA cable that is currently connected to the board.
- ⓘ The hard drive is now fully removed from the laptop.

To reassemble your device, follow these instructions in reverse order.