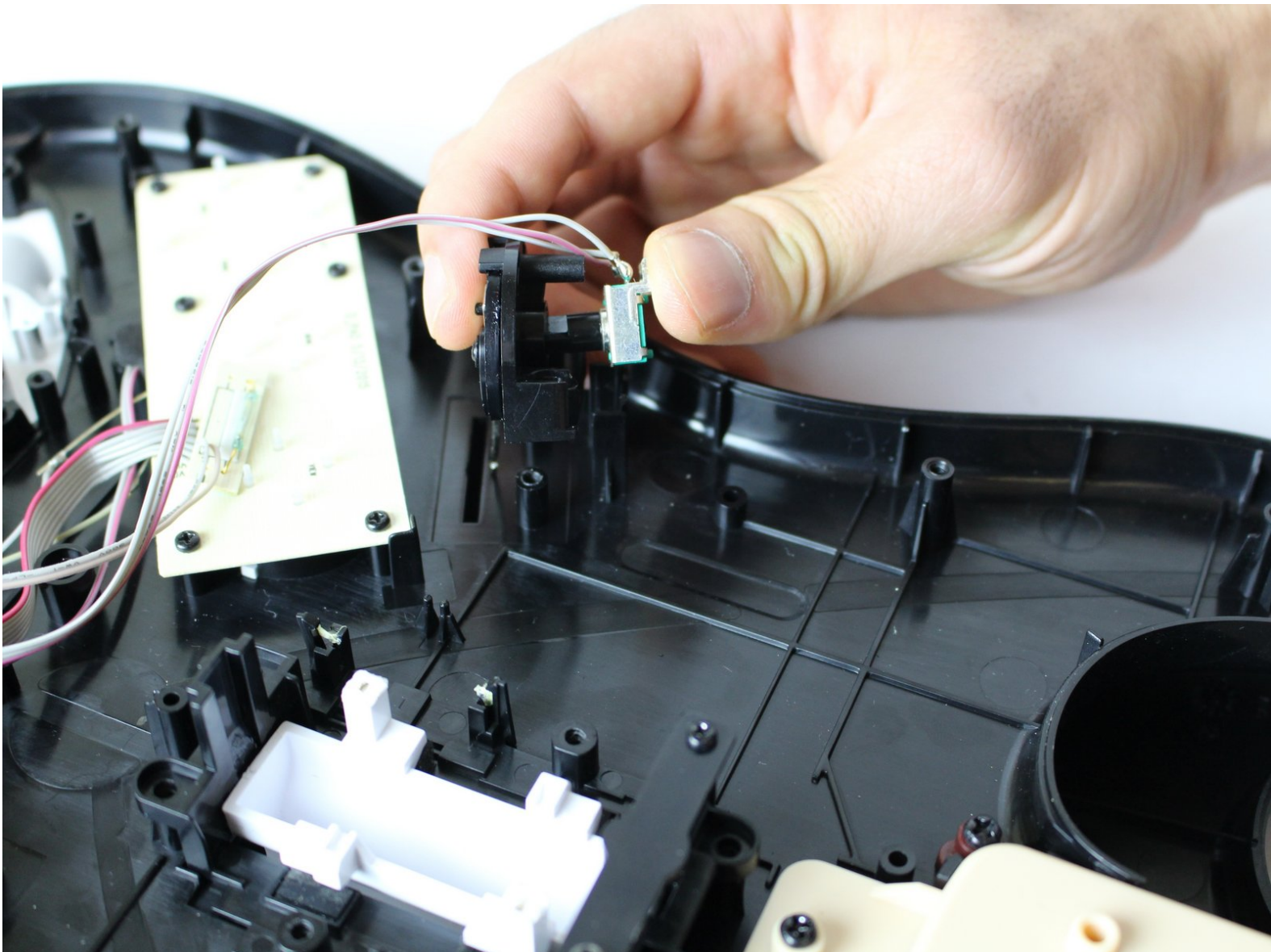




Mad Catz Rock Band 4 Wireless Fender 5 Way Toggle Switch Replacement

This replacement guide shows you how to replace the toggle switch on Mad Catz Rock Band 4 Wireless Fender.

Written By: Hollynn Ricker



This document was generated on 2020-11-28 05:27:17 AM (MST).

INTRODUCTION

The toggle switch on the Mad Catz Rock Band 4 Wireless Fender helps improve the sound quality of your Rockband experience. Your hardware may need to be replaced if the switch is either sticking or non responsive.

Be sure to remove the batteries before beginning the replacement.



TOOLS:

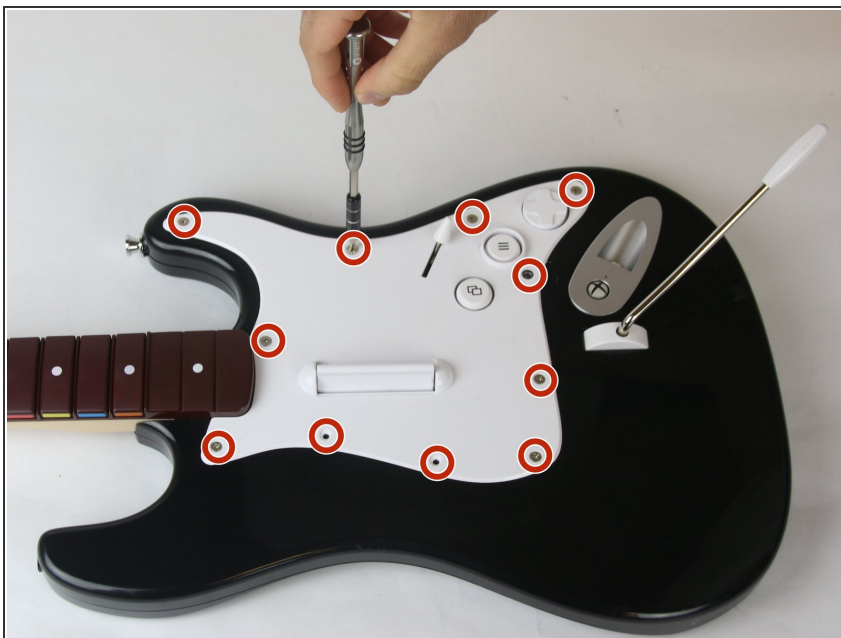
- [JIS Driver Set](#) (1)
-

Step 1 — Outer Casing



- Flip the guitar over so it is back side up. The battery compartment should be facing up.
- Use a size J1 head screwdriver to remove the ten 5 mm short screws.
- Use a J1 screwdriver to remove the four 5 mm long screws on the back of the device.

Step 2



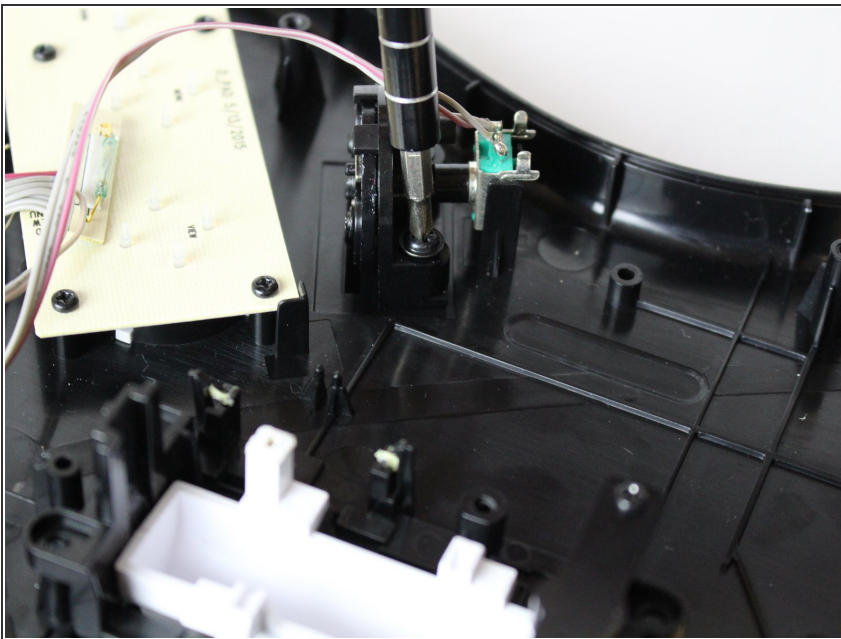
- Turn the device over so the front of the guitar is facing you.
- Using a size J1 philips head screwdriver, remove the eleven 5 mm silver screws (circled in red) around the white panel.

Step 3



- Gently lift the white panel and twist 90 degrees clockwise.
- Using a size J1 head screwdriver, remove the two 5 mm black screws from underneath the white panel. You should now be able to pull the guitar apart.

Step 4 — Five Way Toggle Switch

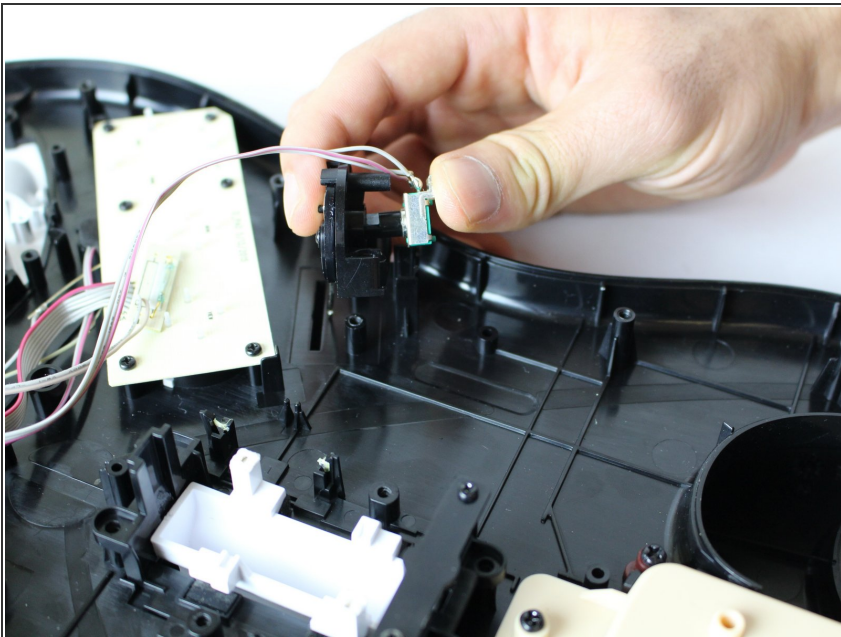


- Look for the toggle switch component on the inside of the guitar. The component rests in a

black, circular holder that is positioned perpendicular relative to the inside of the front of the guitar.

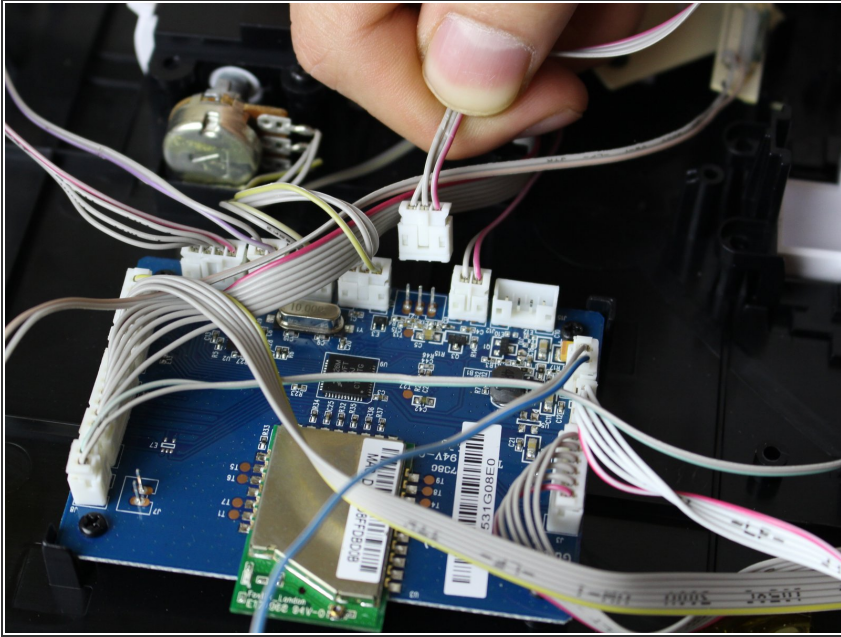
- Unscrew the two black, vertical, 5 mm philips head screws holding the part in place using a size J1 screwdriver.

Step 5



- Pull the entire component out in a vertical motion.

Step 6



- Follow the wires from the component to the main circuit board. Unplug the toggle switch component from the main board.
- Plug in your replacement toggle switch hardware.

To reassemble your device, follow these instructions in reverse order