



# Velocity Micro Cruz T301 Speakers Replacement

Replacing defective speakers in a Velocity Micro Cruz T301.

Written By: Ali Rashid Al Araimi



---

## INTRODUCTION

The Velocity Micro Cruz T301 is a tablet that is specifically designed as a multimedia device. The speaker is necessary for all audio based media. As such, it can be a vital part of the user's experience.

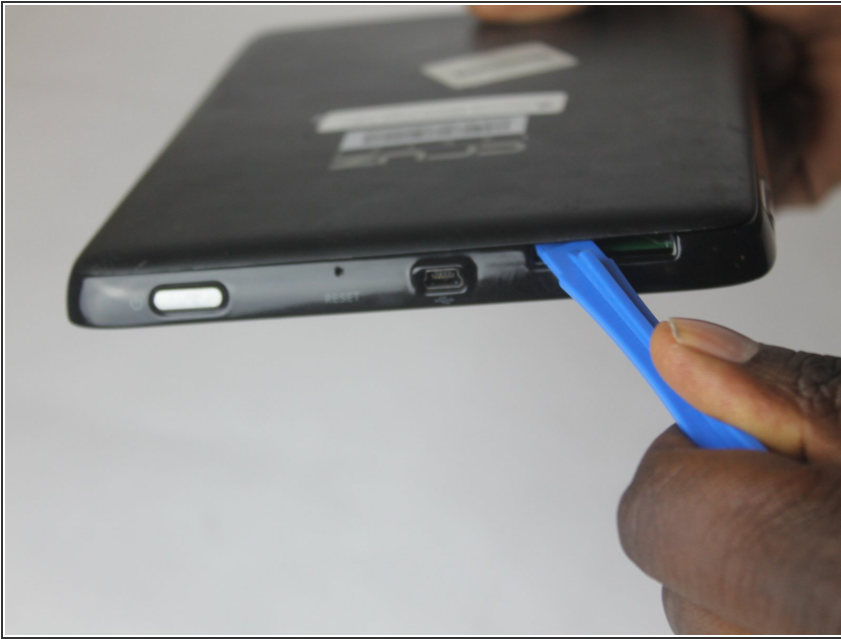
This guide will show you the steps to remove the speaker on a tablet. Once the speaker is removed follow the guide in reverse to install a new speaker.



### TOOLS:

- [iFixit Opening Tool](#) (1)
  - [Heavy-Duty Spudger](#) (1)
  - [Phillips #0 Screwdriver](#) (1)
-

## Step 1 — Speakers



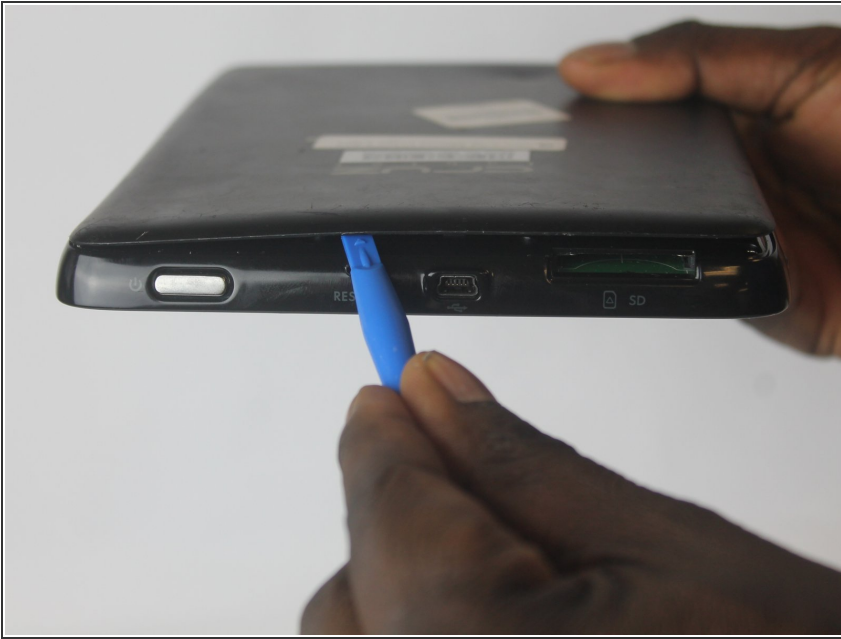
- Insert an opening tool in the SD port, with the edge pointing towards the rear panel.
- Use the opening tool to pry the back plate up.

## Step 2



- Insert a second opening tool into the space created by the first opening tool.

### Step 3



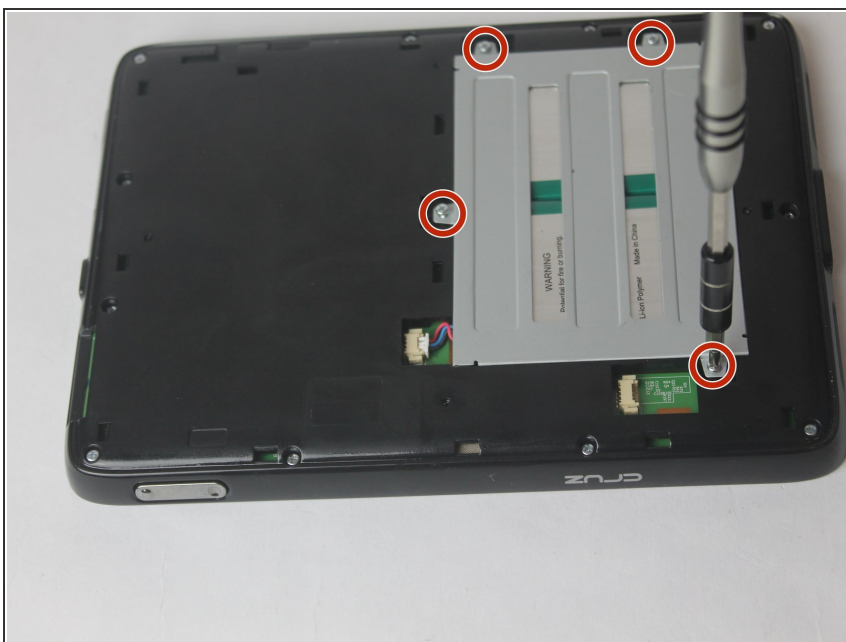
- Remove the first opening tool.

### Step 4



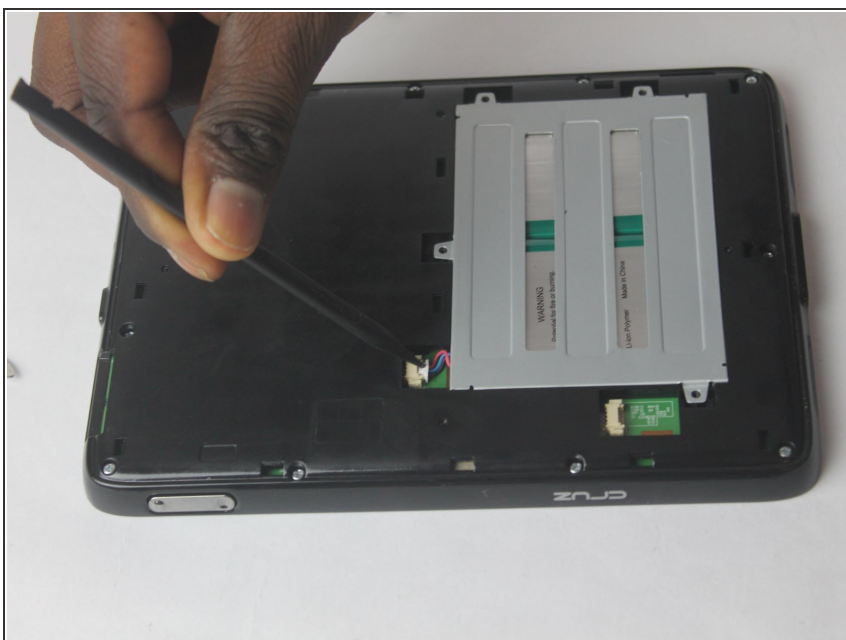
- Slide the opening tool across the back plate to disconnect the clips joining the plate to the tablet.

## Step 5



- Remove the four screws in the metal plate covering the battery using a Phillips #0 screwdriver.

## Step 6



- Using a plastic spudger to remove the battery connector.

**⚠ Failure to follow this step may result in an electric shock.**



## Step 7



- Remove the battery with a spudger.

⚠ The photos in this guide use a metal spudger. Do not use a metal spudger as it can damage the device or conduct electricity causing a shock.

## Step 8



- Remove the twelve screws in the cover with a Phillips #0 screwdriver.

## Step 9



- Place a spudger between the tablet base and the screen.

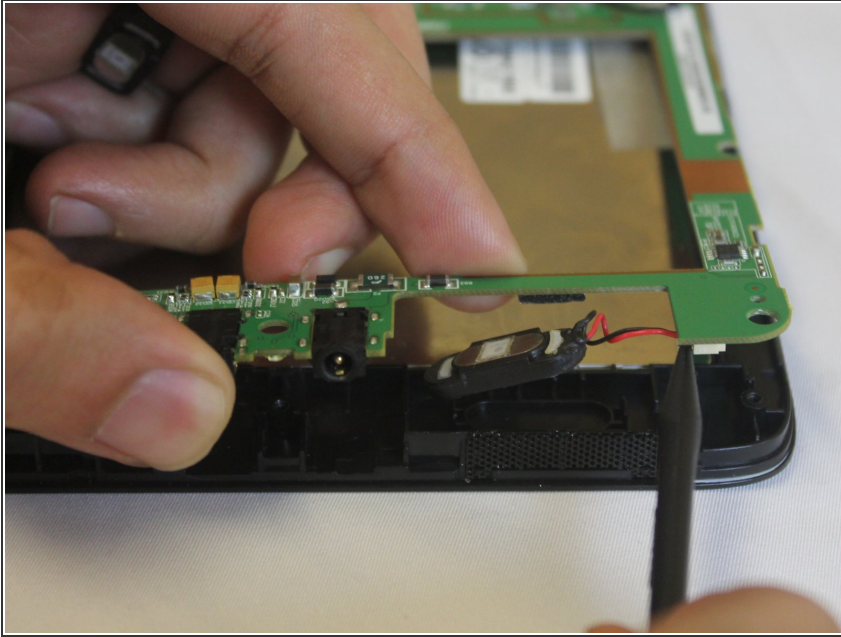
**⚠ Again this photo shows the use of a metal spudger. The use of a metal spudger can cause damage to the device and can lead to an electric shock.**

## Step 10



- Move the spudger around the face to release the clips attached to the tablet base.

## Step 11



- Locate the speaker on the motherboard. Use the plastic spudger to disconnect the speaker from the connection port.
- ☑ Plug the new speaker into the port, then use the plastic spudger to gently push it in.

To reassemble your device, follow these instructions in reverse order.