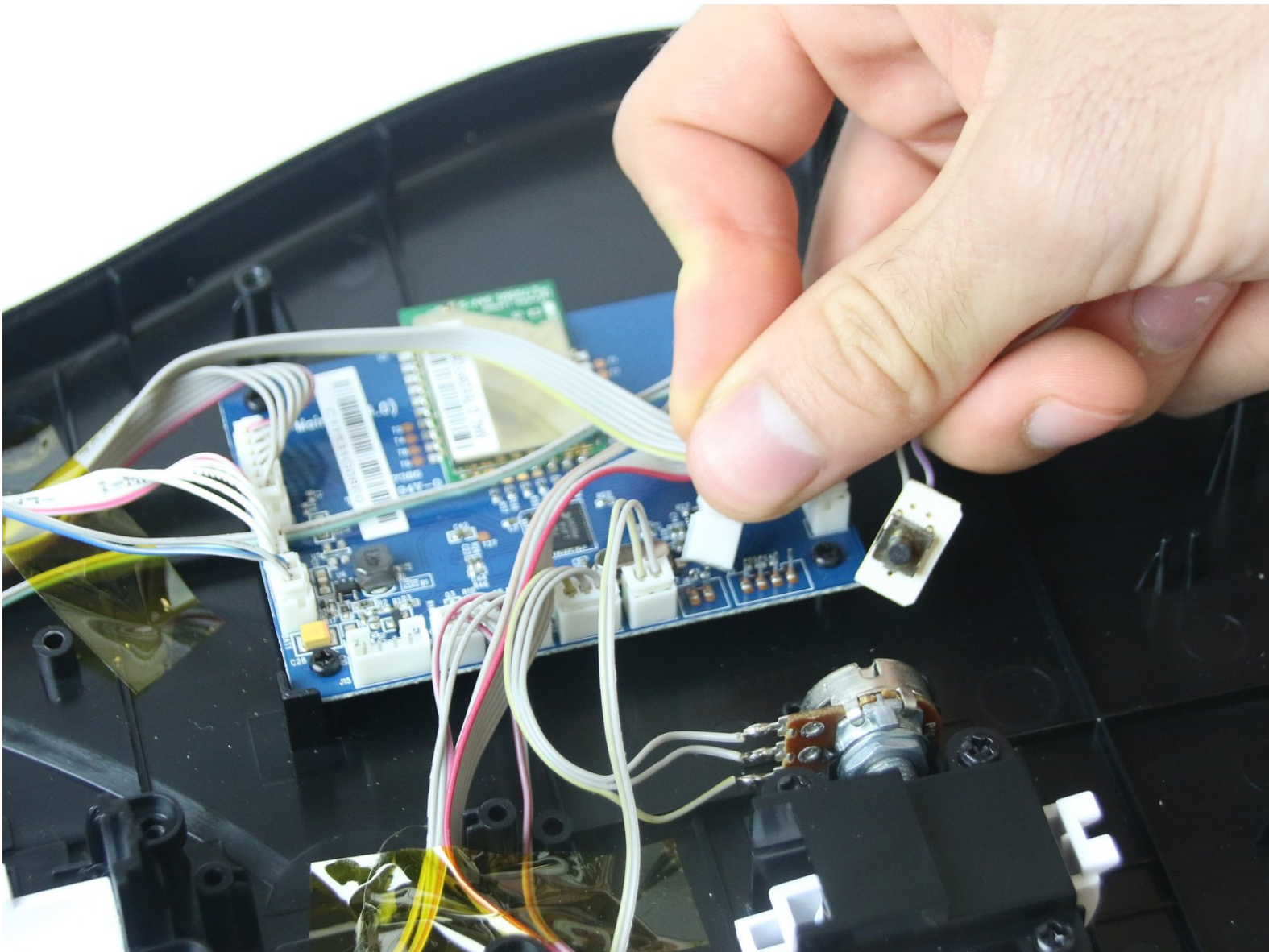




Mad Catz Rock Band 4 Wireless Fender Sync Component Replacement

This guide demonstrates how to replace a sync component that no longer works on the Mad Catz Rock Band 4 Wireless Fender.

Written By: Hollynn Ricker



This document was generated on 2020-11-21 02:37:10 AM (MST).

INTRODUCTION

The sync component connects your Mad Catz Rock Band 4 Wireless Fender to the Xbox. This hardware is responsible for your wireless rock experience. If you have not seen the troubleshooting page which shows how to re-sync the controller without a part replacement, click [here](#).

Be sure to remove the batteries before doing any of the following steps.



TOOLS:

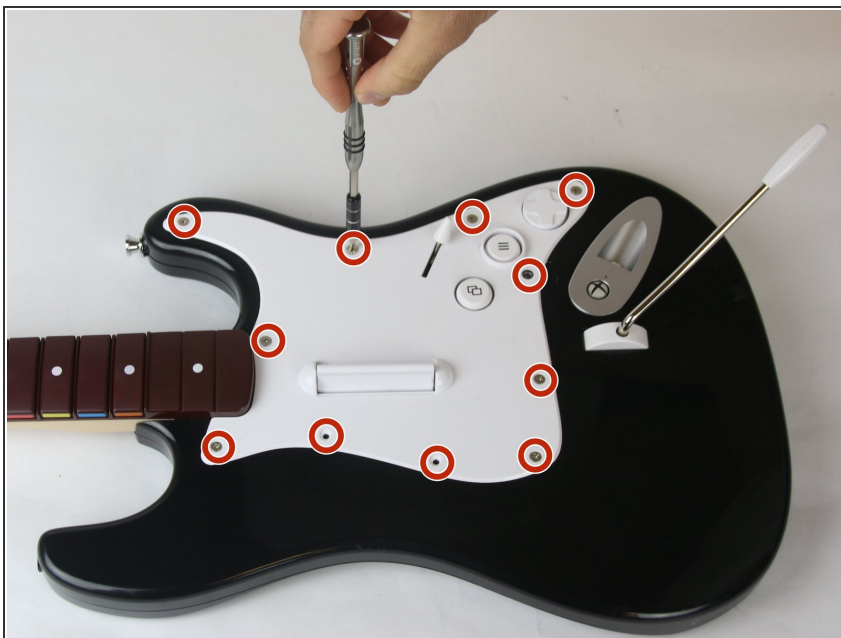
- [JIS Driver Set](#) (1)
-

Step 1 — Outer Casing



- Flip the guitar over so it is back side up. The battery compartment should be facing up.
- Use a size J1 head screwdriver to remove the ten 5 mm short screws.
- Use a J1 screwdriver to remove the four 5 mm long screws on the back of the device.

Step 2



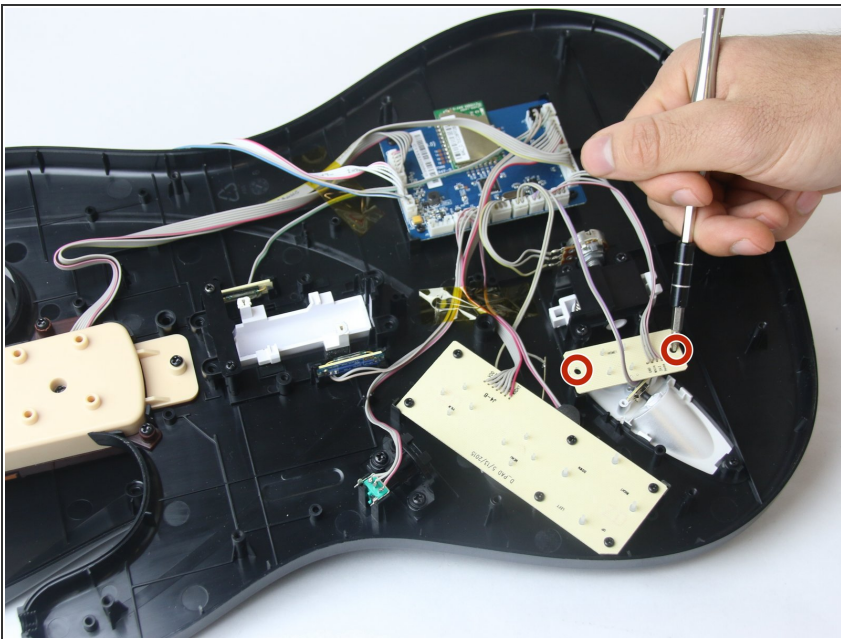
- Turn the device over so the front of the guitar is facing you.
- Using a size J1 philips head screwdriver, remove the eleven 5 mm silver screws (circled in red) around the white panel.

Step 3



- Gently lift the white panel and twist 90 degrees clockwise.
- Using a size J1 head screwdriver, remove the two 5 mm black screws from underneath the white panel. You should now be able to pull the guitar apart.

Step 4 — Sync Component

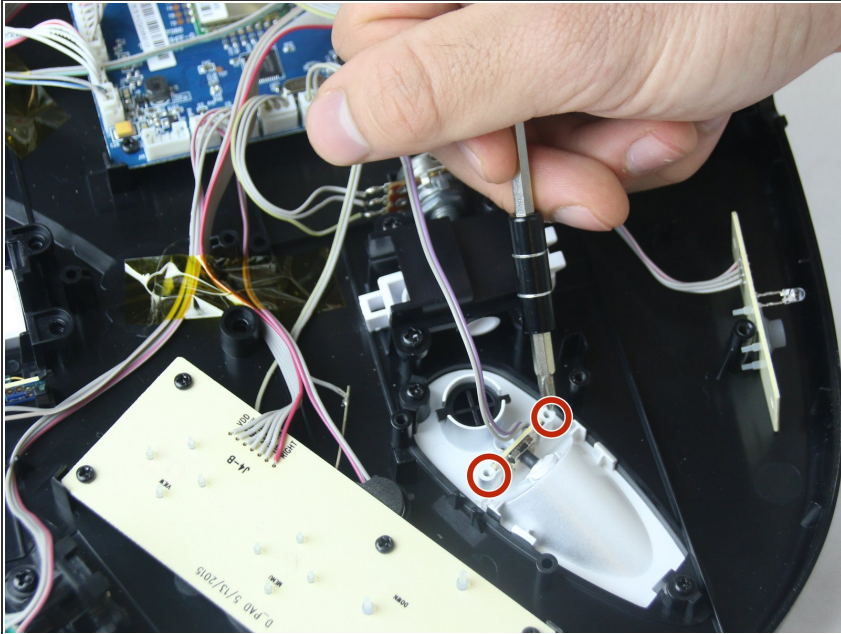


- Remove the two black 5 mm screws (circled in red) from the back of the power button component using a

size J1 philips head screwdriver.
You can identify this by the code J5-B on the component.

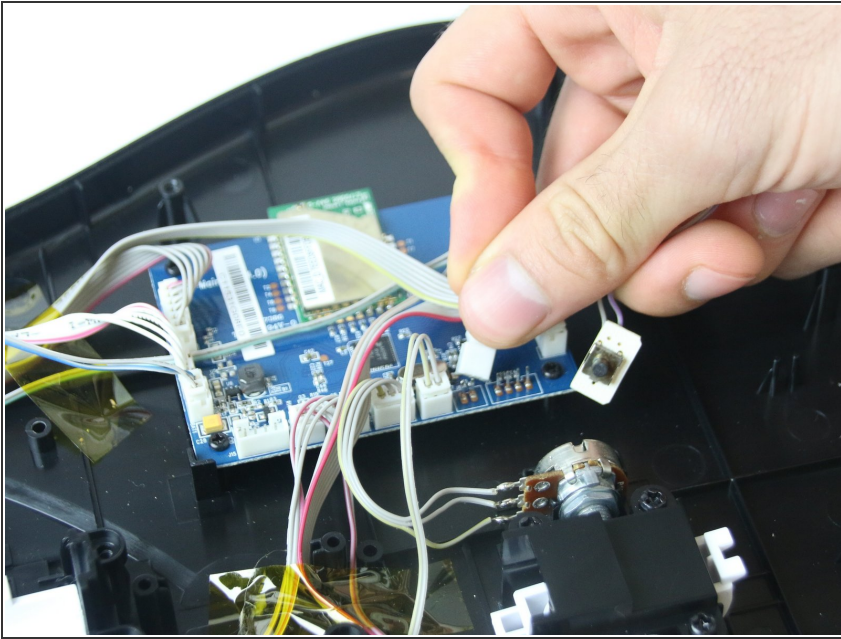
- Lift the small, rectangular circuit board out and set it aside.

Step 5



- Locate the sync component hardware. It is a small circuit board that sits sideways with respect to the other circuit boards around it.
- Remove the two 5mm black screws (circled in red) holding the circuit board in place using a size J1 philips head screwdriver. The component should now slide out vertically.

Step 6



- Follow the wires connected to the sync component back to the main circuit board. Unplug the component from the main circuit board.

To reassemble your device, follow these instructions in reverse order.