



# Mid F900 Back Cover Replacement

Replace the back cover of your device.

Written By: Matthew Oliva



---

## INTRODUCTION

This is a guide to replace the back cover of the device. Make sure to follow all the steps correctly and handle with care.

---



### TOOLS:

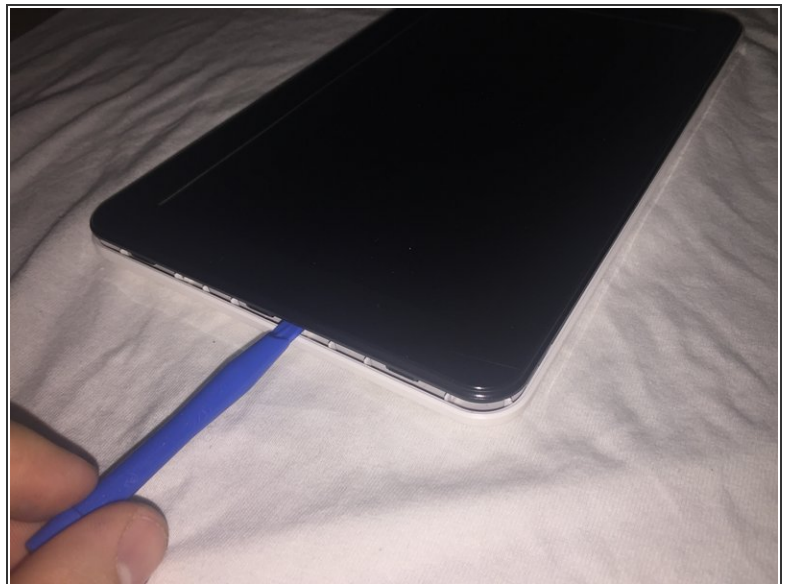
- [iFixit Opening Tools](#) (1)
  - [JIS Driver Set](#) (1)
-

## Step 1 — Back Cover



- Using a J00 Phillips-head screwdriver, remove the two screws located at the bottom of the device.
- ⓘ Screws are 5mm x 1mm in size.

## Step 2



- Use the plastic opening tool to pry off the white back-plate of the device.

To reassemble your device, follow these instructions in reverse order.